

(PER TABLE 6-1, ASHRAE 62.1, 2014)

RETAIL OCCUPANCY:  
NET OCCUPIABLE SPACE = 1394 SQ. FT.  
PEOPLE COUNT: 10 PERSONS

TOTAL PERSONS X 1.5 + .12 X NET SQ. FT. = REQ'D CFM.  
(10 X 1.5) + (.12 X 1394) = 242.28 CFM REQUIRED.

OUTSIDE AIR PROVIDED:  
AHU-1 - 250 CFM

TOTAL: 250 CFM - IN COMPLIANCE.

OUTSIDE AIR CALCULATION  
UNIT (E)

(PER TABLE 6-1, ASHRAE 62.1, 2014)

RETAIL OCCUPANCY:  
NET OCCUPIABLE SPACE = 1310 SQ. FT.  
PEOPLE COUNT: 10 PERSONS

TOTAL PERSONS X 1.5 + .12 X NET SQ. FT. = REQ'D CFM.  
(10 X 1.5) + (.12 X 1310) = 232.2 CFM REQUIRED.

OUTSIDE AIR PROVIDED:  
AHU-2 - 250 CFM

TOTAL: 250 CFM - IN COMPLIANCE.

OUTSIDE AIR CALCULATION  
UNIT (D)

(PER TABLE 6-1, ASHRAE 62.1, 2014)

RETAIL OCCUPANCY:  
NET OCCUPIABLE SPACE = 1405 SQ. FT.  
PEOPLE COUNT: 10 PERSONS

TOTAL PERSONS X 1.5 + .12 X NET SQ. FT. = REQ'D CFM.  
(10 X 1.5) + (.12 X 1405) = 243.6 CFM REQUIRED.

OUTSIDE AIR PROVIDED:  
AHU-3 - 250 CFM

TOTAL: 250 CFM - IN COMPLIANCE.

OUTSIDE AIR CALCULATION  
UNIT (C)

(PER TABLE 6-1, ASHRAE 62.1, 2014)

RETAIL OCCUPANCY:  
NET OCCUPIABLE SPACE = 1200 SQ. FT.  
PEOPLE COUNT: 10 PERSONS

TOTAL PERSONS X 1.5 + .12 X NET SQ. FT. = REQ'D CFM.  
(10 X 1.5) + (.12 X 1200) = 219.96 CFM REQUIRED.

OUTSIDE AIR PROVIDED:  
AHU-4 - 250 CFM

TOTAL: 250 CFM - IN COMPLIANCE.

OUTSIDE AIR CALCULATION  
UNIT (B)

(PER TABLE 6-1, ASHRAE 62.1, 2014)

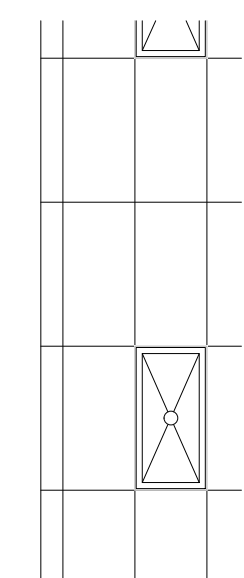
RETAIL OCCUPANCY:  
NET OCCUPIABLE SPACE = 2031 SQ. FT.  
PEOPLE COUNT: 15 PERSONS

TOTAL PERSONS X 1.5 + .12 X NET SQ. FT. = REQ'D CFM.  
(15 X 1.5) + (.12 X 2031) = 364.4 CFM REQUIRED.

OUTSIDE AIR PROVIDED:  
AHU-5 + 6 - 500 CFM

TOTAL: 500 CFM - IN COMPLIANCE.

OUTSIDE AIR CALCULATION  
UNIT (A)



ISSUED FOR:  
permit  
  
JULY 23, 2019  
  
GARLAND PATTERSON, P.E.  
PE 14175

PROJECT:  
**N.O.F.**  
CORPORATE OFFICE  
6130 22nd AVE. NORTH  
ST. PETERSBURG, FLORIDA 33710

SOFARELLI & ASSOCIATES ARCHITECTURE  
A.I.A.  
MICHAEL F. SOFARELLI JR.  
6365 142nd AVENUE NORTH  
CLEARWATER, FLORIDA 33760  
EMAIL: sofarell@verizon.net  
TEL: 727-530-3535  
FAX: 530-4419

Revisions:

3	OWNER REVISIONS	8/23/18
---	-----------------	---------

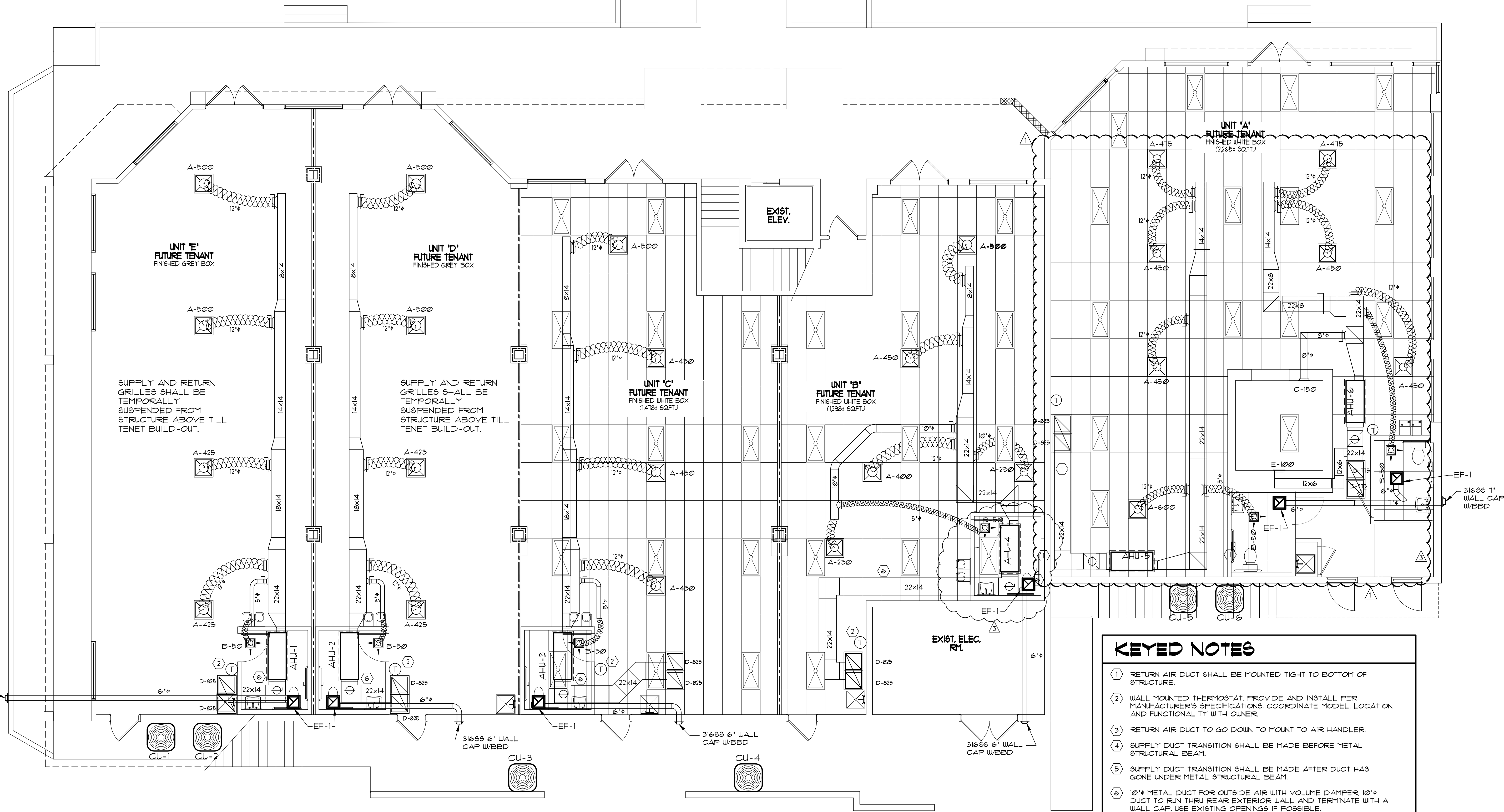
Content:  
**FIRST FLOOR MECHANICAL PLAN**

Filename:  
NOF

Date:  
01-29-2018

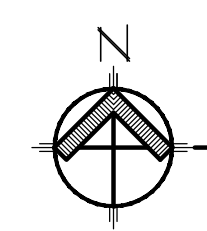
Proj. no.  
17010

Sheet:  
M-1



**KEYED NOTES**

- RETURN AIR DUCT SHALL BE MOUNTED TIGHT TO BOTTOM OF STRUCTURE.
- WALL MOUNTED THERMOSTAT, PROVIDE AND INSTALL PER MANUFACTURER'S SPECIFICATIONS. COORDINATE MODEL, LOCATION AND FUNCTIONALITY WITH OWNER.
- RETURN AIR DUCT TO GO DOWN TO MOUNT TO AIR HANDLER.
- SUPPLY DUCT TRANSITION SHALL BE MADE BEFORE METAL STRUCTURAL BEAM.
- SUPPLY DUCT TRANSITION SHALL BE MADE AFTER DUCT HAS GONE UNDER METAL STRUCTURAL BEAM.
- 10" METAL DUCT FOR OUTSIDE AIR WITH VOLUME DAMPER, 10" DUCT TO RUN THRU REAR EXTERIOR WALL AND TERMINATE WITH A WALL CAP. USE EXISTING OPENINGS IF POSSIBLE.



# FIRST FLOOR MECHANICAL PLAN

SCALE : 3/16" = 1'-0"

**MDCI**  
MDCI FLORIDA, INC  
405 2nd Street South, Suite B  
Safety Harbor, Florida 34695  
Mechanical - Electrical - Plumbing  
Phone 727.698.0398