

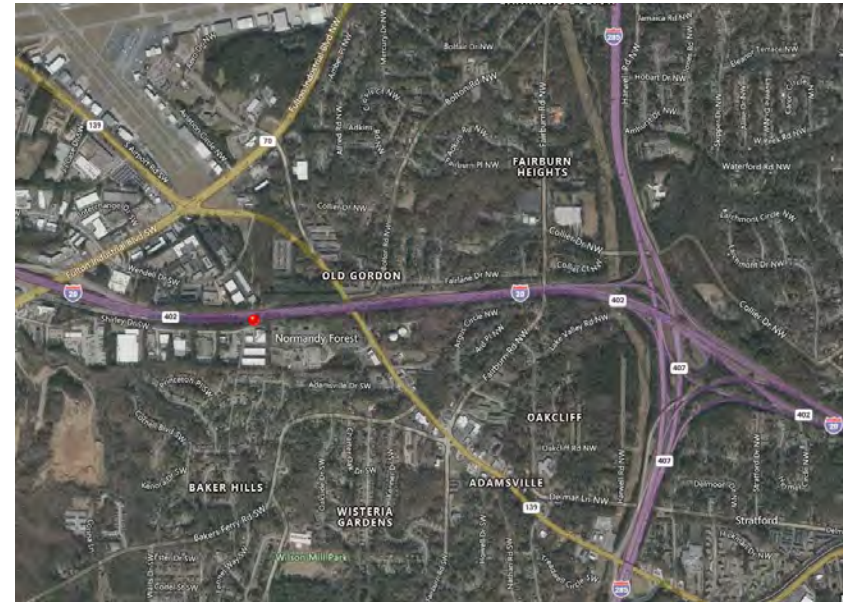
# WAREHOUSE SPACE FOR LEASE

3908 Shirley Drive, Atlanta, GA, 30336



## PROJECT FEATURES & HIGHLIGHTS

- 2,338-10,971 SF Warehouses Available
- Freshly Spec'd Suites with New Finishes Throughout
- Dock-High & Drive-In Door Configurations
- New Paint and LED Lights in Spec'd Warehouse
- Move-In Ready
- Extremely Aggressive Rental Rate and Abatement
- Close Proximity to I-20 & Fulton Industrial Blvd
- Property Updated with New Paint, Signage, Parking Lots



For more information, please contact:

Allie Schonberg  
404.242.1660  
[aschonberg@middourinvestments.com](mailto:aschonberg@middourinvestments.com)

