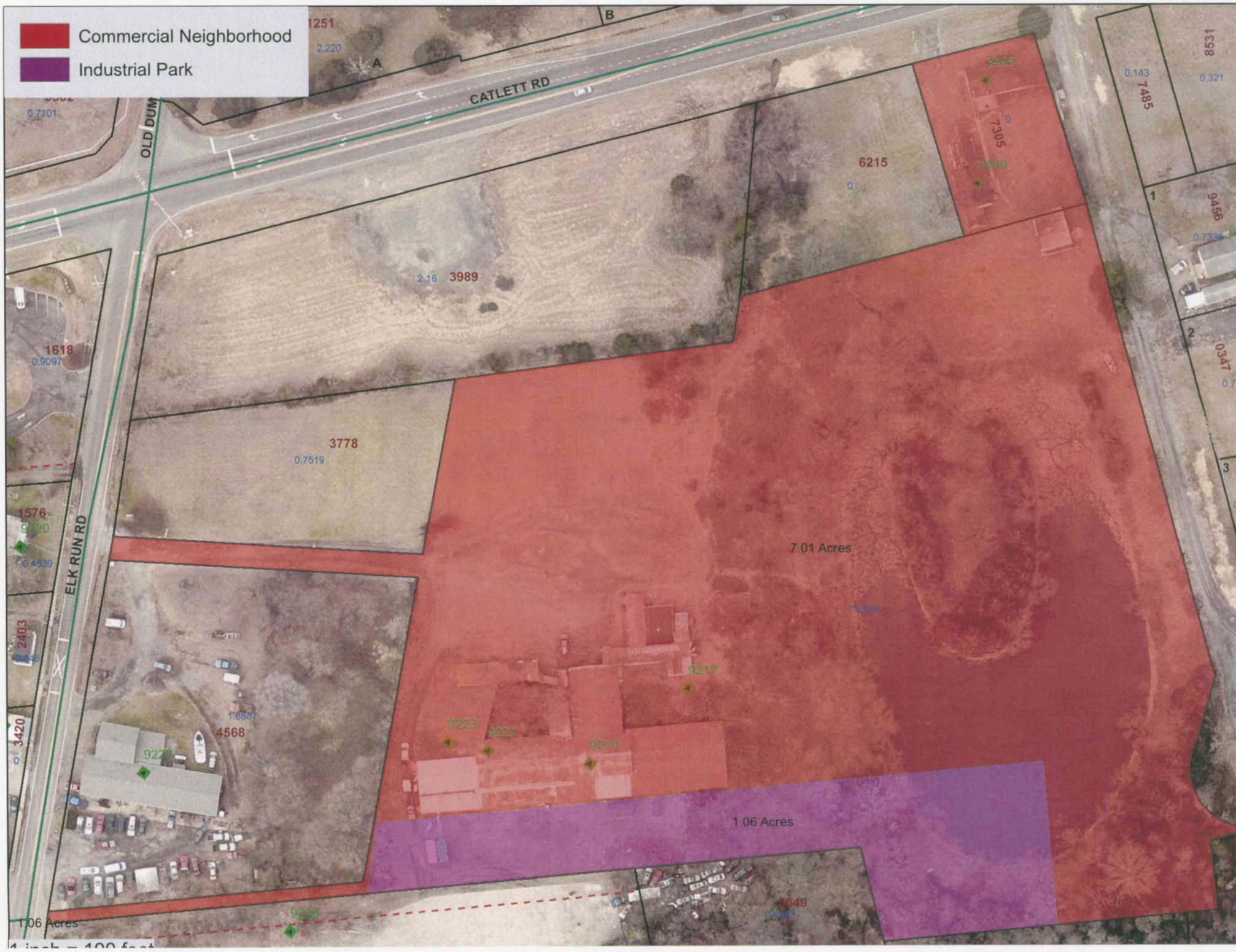
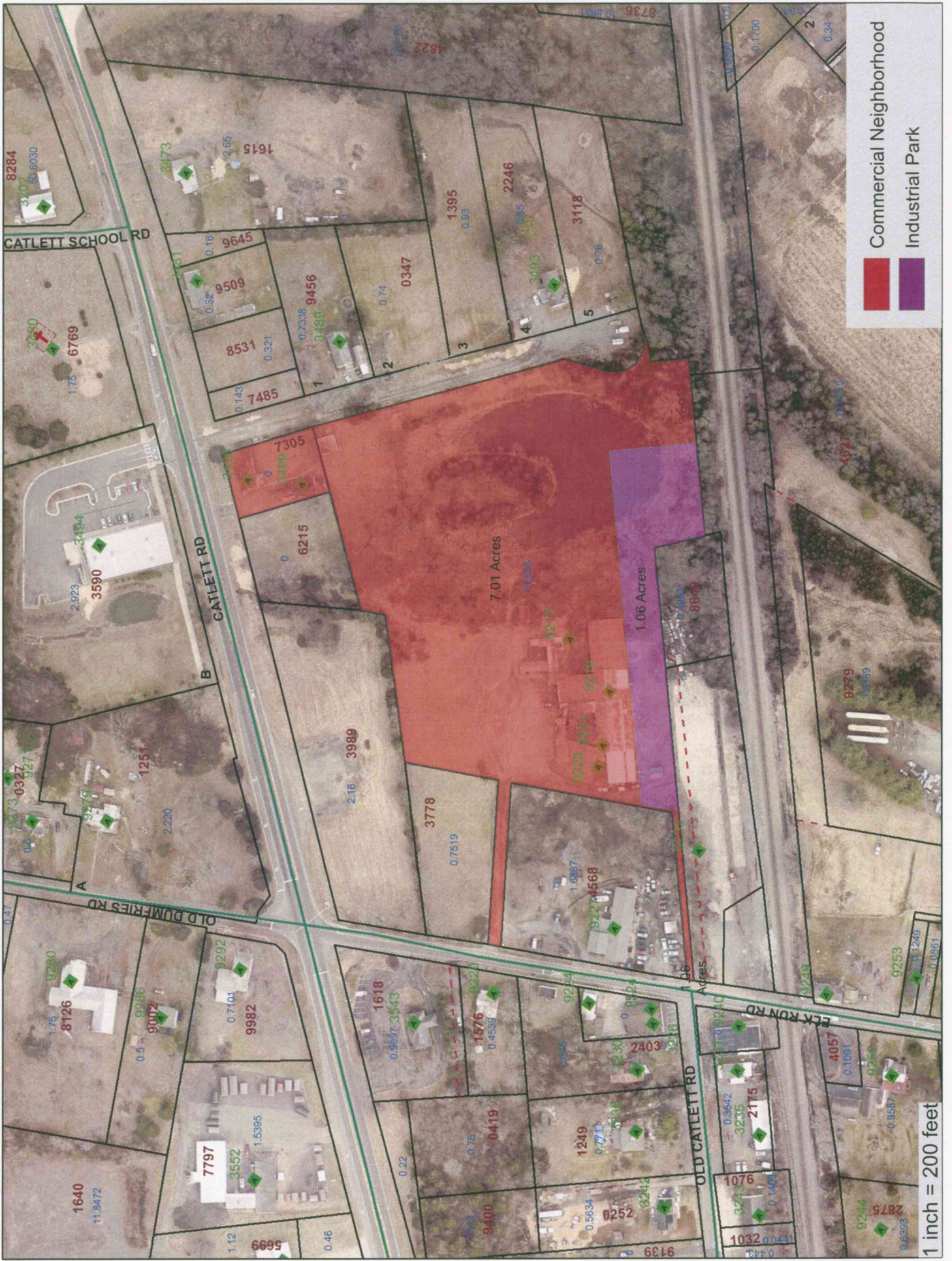


- Commercial Neighborhood
- Industrial Park



1 inch = 100 feet



Commercial Neighborhood
Industrial Park

1 inch = 200 feet

CATLETT SCHOOL RD

CATLETT RD

OLD DUMFRIES RD

OLD CATLETT RD

ELK RUN RD

1640
11.8472

7797
3552
1.5395

1618
3.6897, 3.543

9400
0.43

2520
0.5634

1249
0.771

2403
0.330

1076
0.443

2175
0.1469

4057
0.1091

2875
0.6393

9244
0.9587

8126
1.75

9280
0.9386

9002
0.5

9982
0.7101

9292
1.5395

1251
2.220

3590
2.923

3484
0.6

9273
0.327

9271
0.6

9276
0.9276

3778
0.7519

3989
2.16

6215
0.6215

7305
0.1420

7485
0.143

8531
0.321

9509
0.32

9456
0.7338

9489
0.74

0347
0.74

1395
0.93

2246
0.85

3118
0.78

3403
0.85

9217
0.9217

9210
0.9210

9223
0.9223

8284
3.02

50.8030

3080
1.75

6769
1.75

3473
0.16

9645
0.16

1615
2.65

4822
3.0719

8736
1.951

0.1700

0.34

0.1700

0.34

0.1700

0.34

0.1700

0.34

0.1700

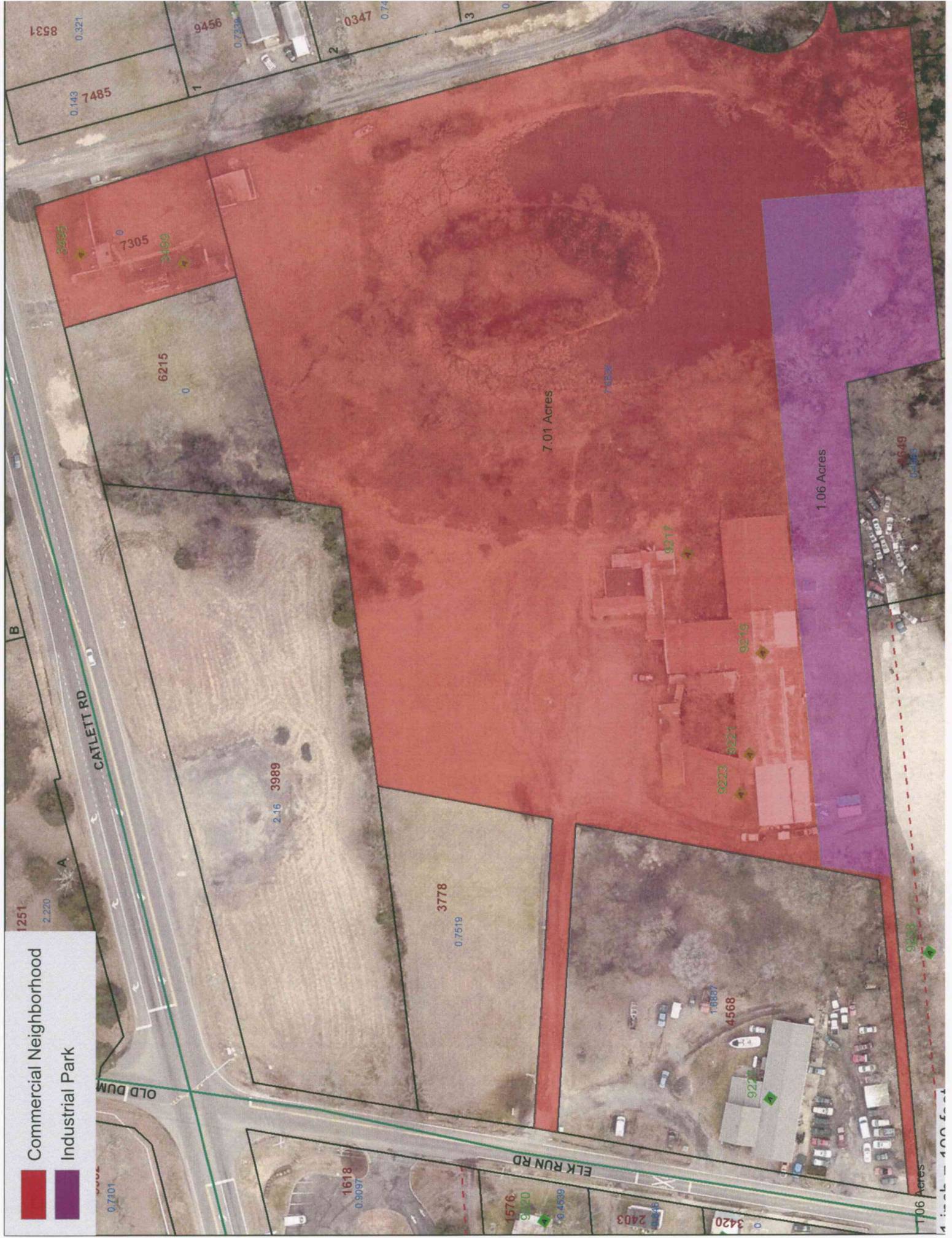
0.34

0.1700

0.34

0.1700

0.34



Commercial Neighborhood
Industrial Park



1.06 Acres

7.01 Acres

1.06 Acres

7485

7305

6215

3989

3778

4568

9217

9219

9221

9223

1618

1576

2403

3420

9456

0347

1251

2220

OLD BUM

ELK RUN RD

CATLETT RD

0649

15355

0333

0649

15355

07101

0333

0649

15355