

718 BROADWAY

BETWEEN 8TH STREET & WAVELY PLACE | NOHO

ksr



718 BROADWAY

BETWEEN 8TH STREET & WAVERLY PLACE | NOHO

PROPERTY HIGHLIGHTS:

- High foot traffic area located near NYU campus
- Close to both Union Square & Washington Square Parks
- Walking distance to the R&W 8th Street and Astor Place 6 train stations
- Neighboring tenants include: *Citibank, AT&T, Pret, Fresh & Co., Starbucks, McDonald's, Lids, Raising Cane's, Juice Generation, Foot Locker, Buffalo Exchange, T-Mobile, The Donut Pub, Dunkin', NYU, GNC, SLT*

SIZE: 6,500 SF Ground Floor
6,000 SF Usable Lower Level

FRONTAGE: 40'

CEILING HEIGHT: 13'

POSSESSION: February 1, 2024

ASKING RENT: Upon Request

TRANSPORTATION: 

CONTACT OUR BROKERS FOR MORE INFORMATION

MADDY SOFFER
MSoffer@ksrny.com

347.752.3350

IKE BIBI
IBibi@ksrny.com

347.417.2860

CAROLINA AZIZ
CAziz@ksrny.com

516.640.6961



All information supplied in this marketing presentation and/or flyer is from sources deemed reliable and is furnished subject to errors, omissions, modifications, removal of listings from sale/lease and to any listing condition. Any square footage, dimensions, floor plans and/or technical data set forth are approximations and are subject to further elaboration/confirmation.



718 BROADWAY

BETWEEN 8TH STREET & WAVERLY PLACE | NOHO

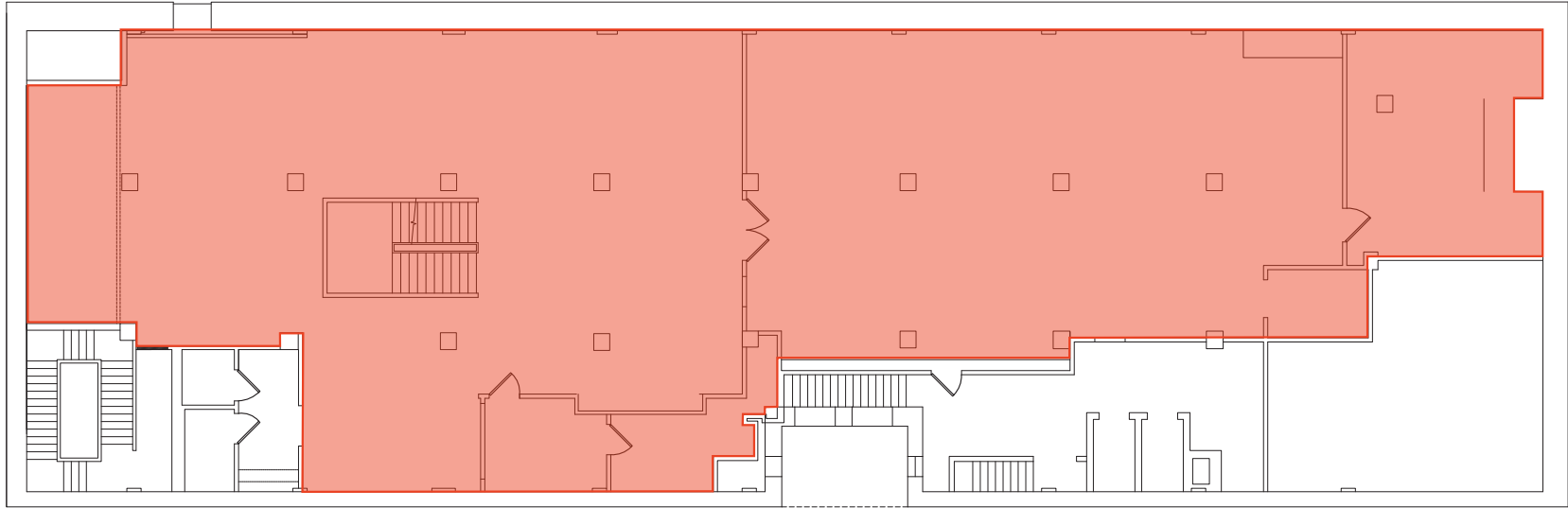
INTERIORS:



718 BROADWAY

BETWEEN 8TH STREET & WAVERLY PLACE | NOHO

FLOOR PLANS:
GROUND FLOOR - 6,500 SF



USABLE LOWER LEVEL - 6,000 SF

