

FOR SALE

HIGHLAND DRIVE OFFICE CONDO



PROPERTY DETAILS

4252 SOUTH HIGHLAND DRIVE, SUITE 105
MILLCREEK, UT 84124

ASKING PRICE: \$495,000

- 1,539 SF
- Available immediately
- Two covered secured parking stalls included (non-reserved)
- Furniture available for sale
- Year built 2002 / remodeled 2019
- CAM \$899/month (everything but taxes)
- Property taxes: \$5,020 (2024)



MOUNTAIN WEST
COMMERCIAL REAL ESTATE

PETER BLACK

pblack@mwcre.com

direct 801.971.9425

[View Profile](#)

**FULL SERVICE
COMMERCIAL REAL ESTATE**

312 East South Temple

Salt Lake City, UT 84111

Office 801.456.8800

www.mwcre.com



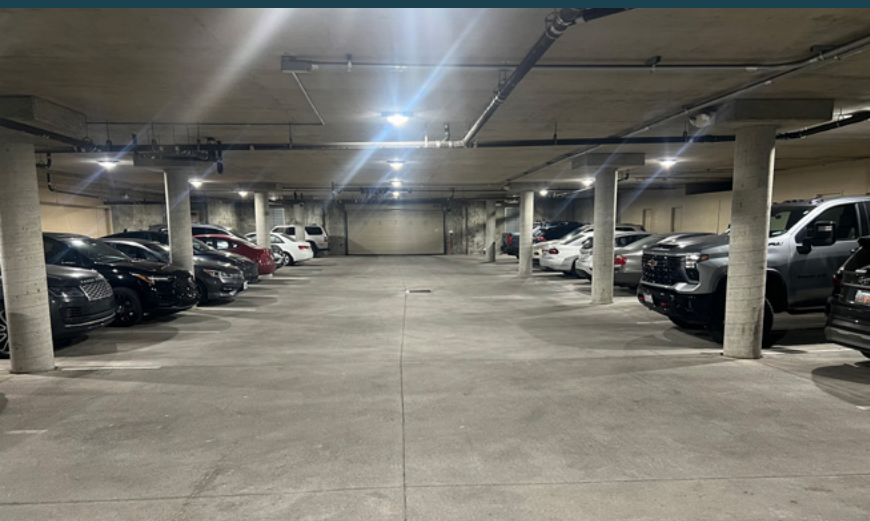
MOUNTAIN WEST
COMMERCIAL REAL ESTATE

PETER BLACK

pblack@mwcre.com

direct 801.971.9425

[View Profile](#)



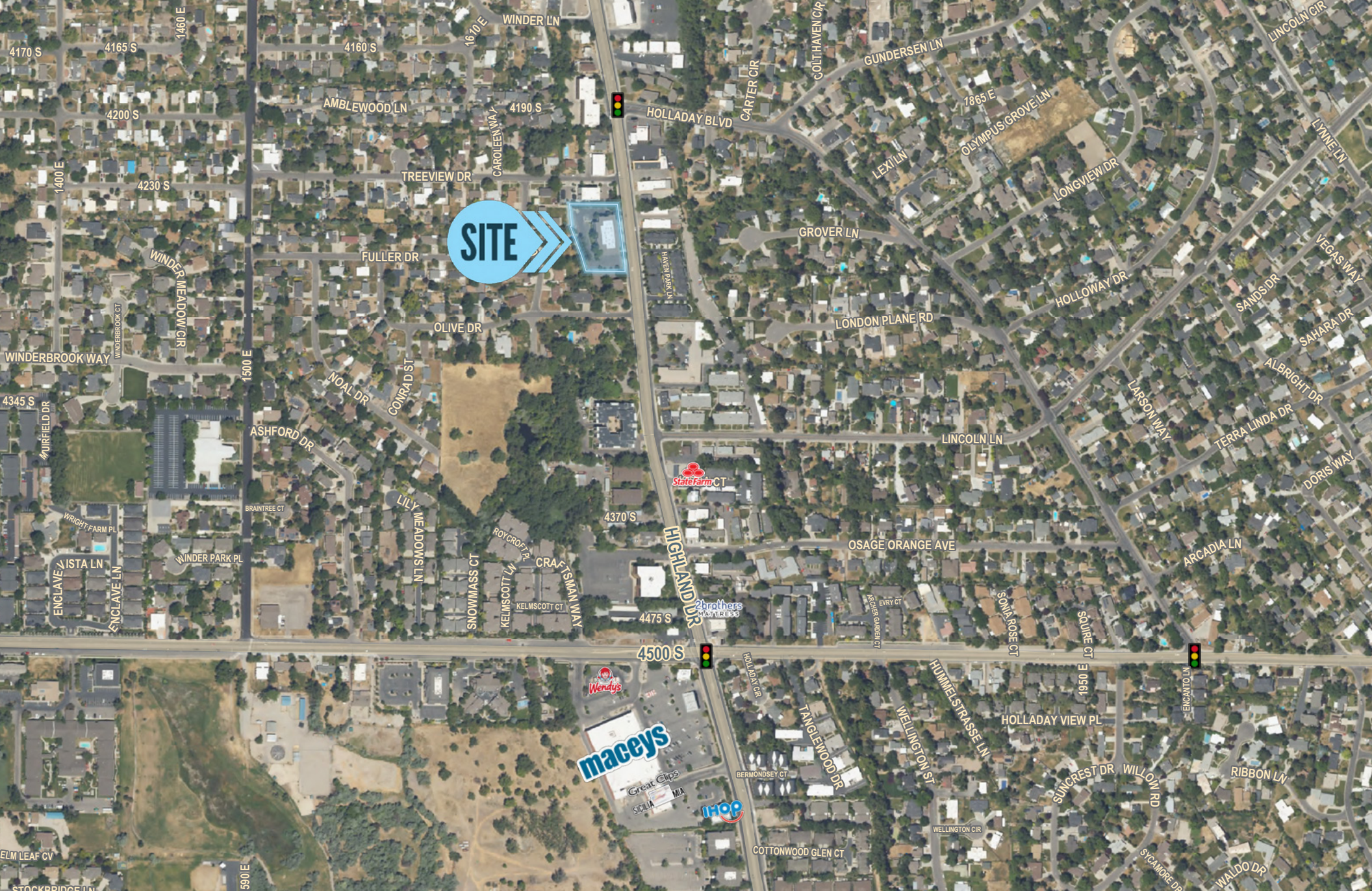
**FULL SERVICE
COMMERCIAL REAL ESTATE**

312 East South Temple

Salt Lake City, UT 84111

Office 801.456.8800

www.mwcre.com



SITE



PETER BLACK

pblack@mwcre.com

direct 801.971.9425

[View Profile](#)

MOUNTAIN WEST
COMMERCIAL REAL ESTATE

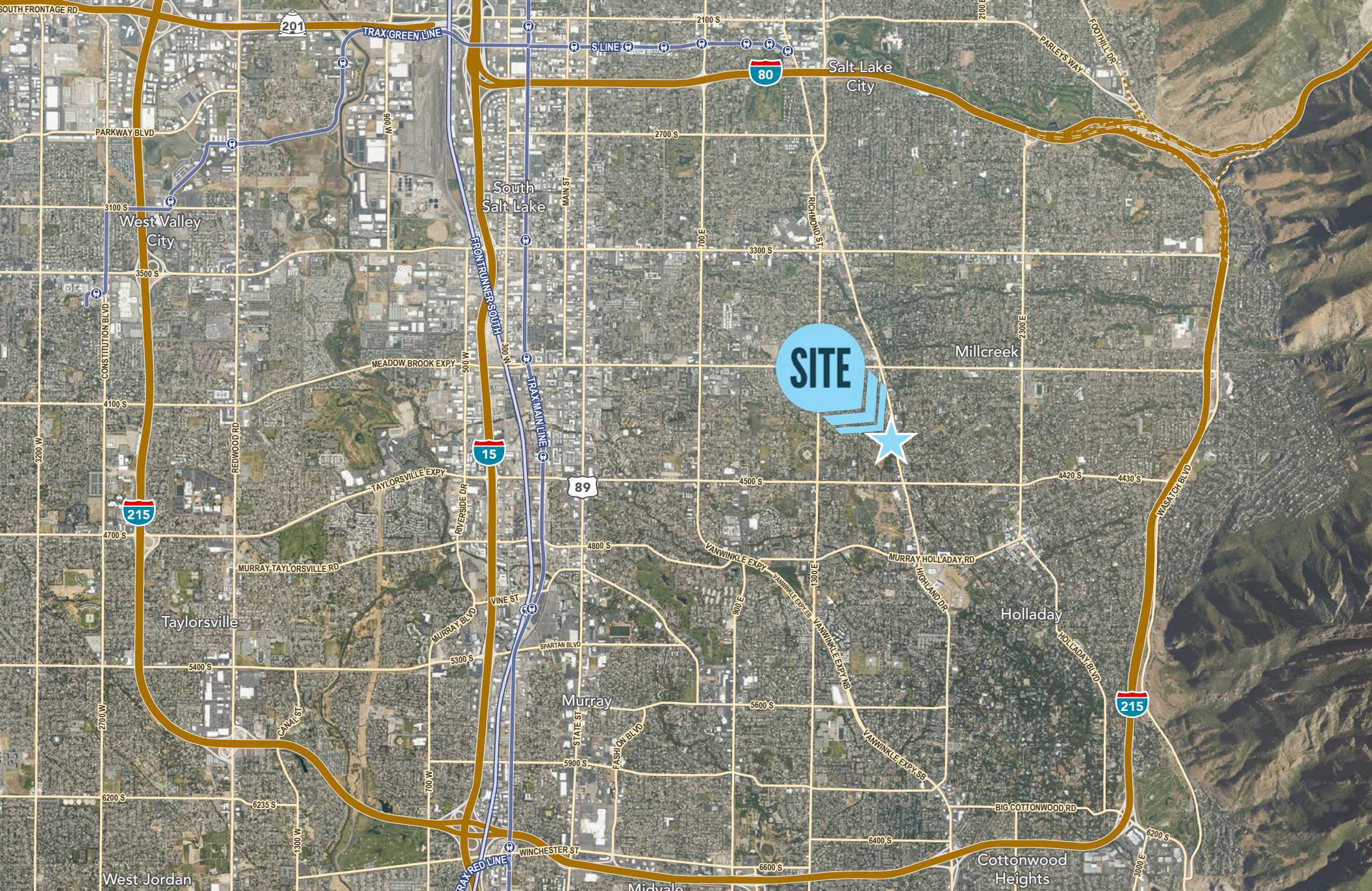
**FULL SERVICE
COMMERCIAL REAL ESTATE**

312 East South Temple

Salt Lake City, UT 84111

Office 801.456.8800

www.mwcre.com



MOUNTAIN WEST
COMMERCIAL REAL ESTATE

PETER BLACK

pblack@mwcre.com
direct 801.971.9425

[View Profile](#)

FULL SERVICE COMMERCIAL REAL ESTATE

312 East South Temple
Salt Lake City, UT 84111
Office 801.456.8800
www.mwcre.com