

AVAILABLE FOR LEASE

± 2,940 SF Space Available

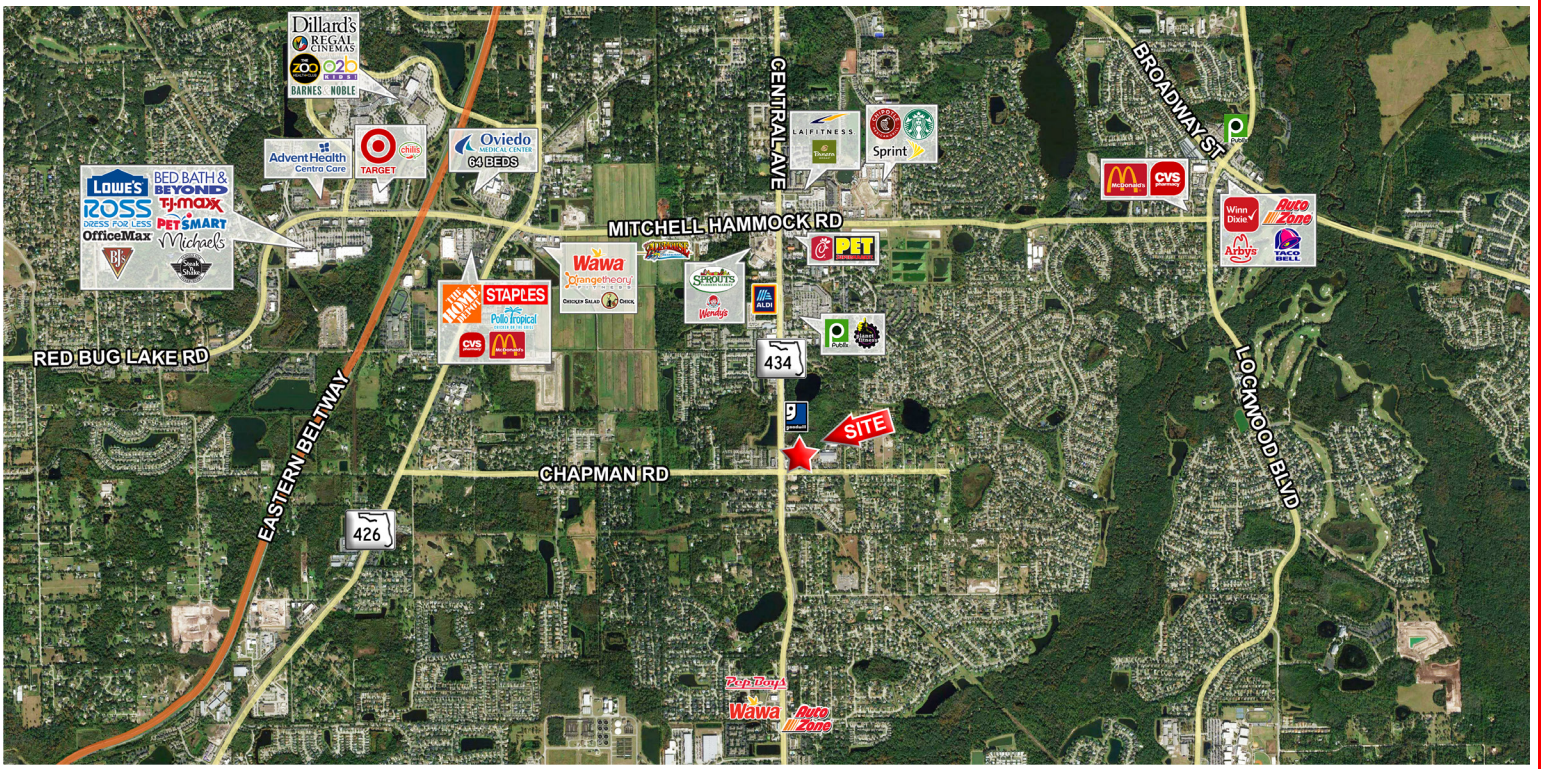
2000 Alafaya Trail, Oviedo, FL



- Southern end of the growing Oviedo Retail Market
- Lighted Intersection of Alafaya Trail & recently widened W. Chapman Road which ties into 426
- Freestanding building with an abundance of parking
- 6 minutes north of the University of Central Florida main campus
- Located within the City of Oviedo

SEVELL REALTY PARTNERS

COMMERCIAL REAL ESTATE SERVICES



Traffic Counts: **Alafaya Trail** **39,500 - vpd**
 Chapman Rd **22,000 - vpd**

DEMOGRAPHICS	1-MILE RANGE	3-MILE RANGE	5-MILE RANGE
POPULATION	7,442	65,108	167,007
MEDIAN AGE	35.0	33.3	31.5
AVG. HOUSEHOLD INCOME	\$83,110	\$93,648	\$89,595

FOR INFORMATION CALL 561-995-0662

Mark McCorkle
 markmccorkle@sevellrealty.com

WWW.SEVELLREALTY.COM
 BROKER PARTICIPATION INVITED-CALL FOR DETAILS

Sevell Realty Partners, Inc.
 2295 CORPORATE BOULEVARD NW, SUITE 131, BOCA RATON, FLORIDA 33431
 LICENSED REAL ESTATE BROKER

NOTE: THIS OFFERING SUBJECT TO ERRORS, OMISSIONS, PRIOR SALE/LEASE OR WITHDRAWAL WITHOUT NOTICE



COMMERCIAL REAL ESTATE SERVICES