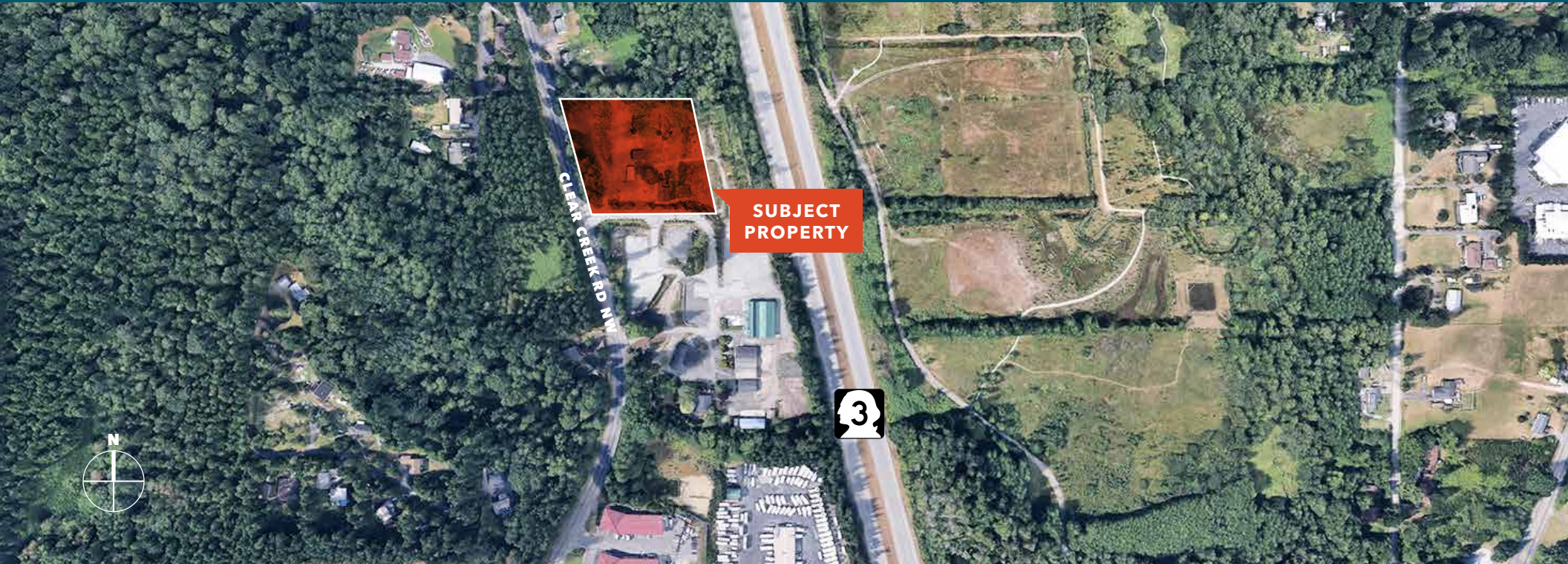




**FLEX SPACE  
FOR LEASE**

# 11812 Clear Creek Rd NW

SILVERDALE, WA



**SUBJECT  
PROPERTY**

**LAURA FOX, CCIM**  
253.722.1441  
laura.fox@kidder.com

**WILL FRAME**  
253.722.1412  
will.frame@kidder.com

**DREW FRAME**  
253.722.1433  
drew.frame@kidder.com

**Kidder  
Mathews**

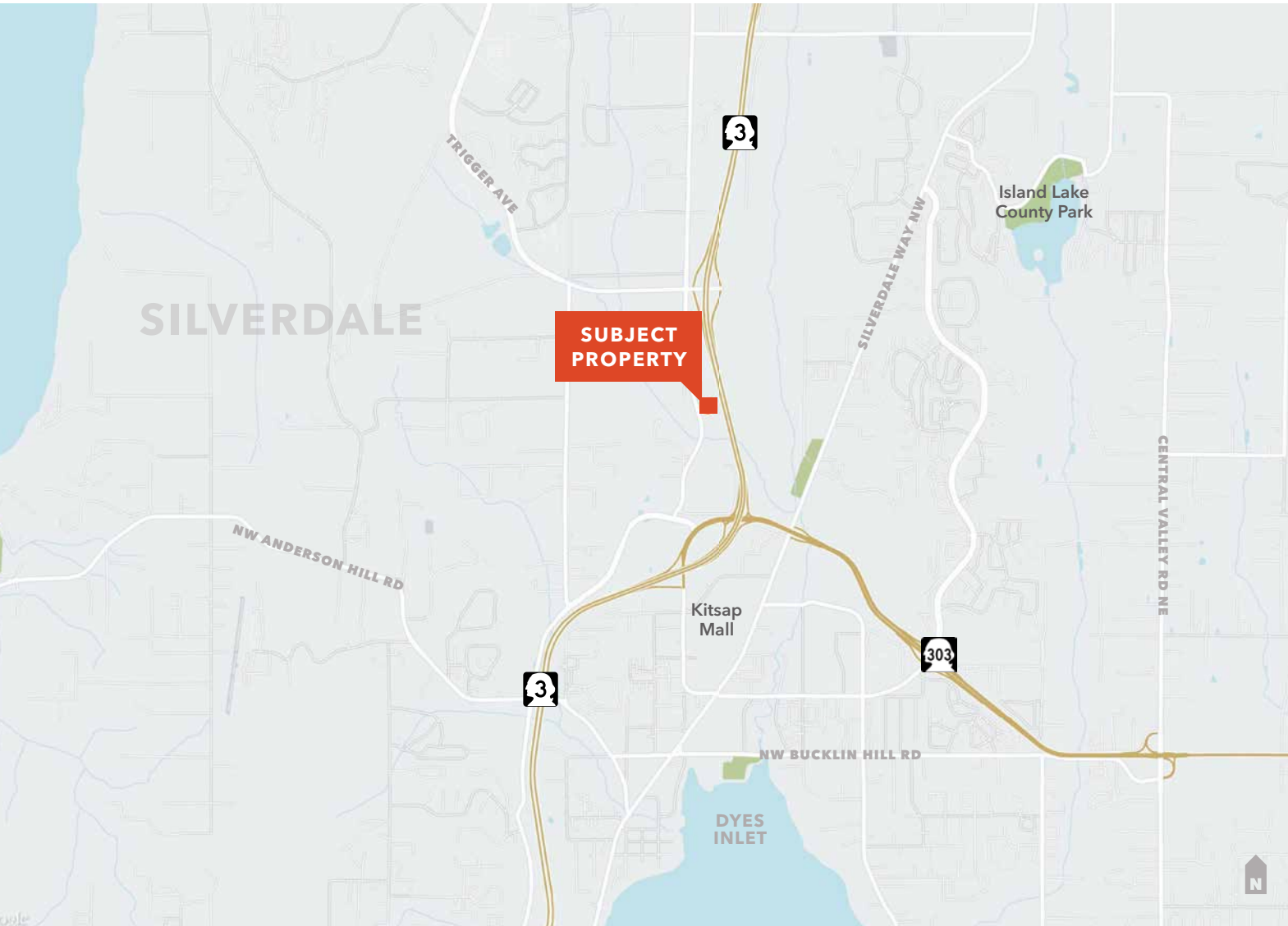
This information supplied herein is from sources we deem reliable. It is provided without any representation, warranty, or guarantee, expressed or implied as to its accuracy. Prospective Buyer or Tenant should conduct an independent investigation and verification of all matters deemed to be material, including, but not limited to, statements of income and expenses. Consult your attorney, accountant, or other professional advisor.

**KIDDER.COM**

## FLEX SPACE FOR LEASE

# 11812 Clear Creek Rd NW

SILVERDALE, WA



±3 acres

Planned ±38,000 SF 2-story building

Completion Q4 2024

Just off Hwy 3 & 303

Freeway visibility from Highway 3

59,191 CPD on Highway 3

Zoning C (Commercial) broad variety of uses allowed

Owner willing to build-to-suit and possibly sell

Please call for pricing

**LAURA FOX, CCIM**  
253.722.1441  
laura.fox@kidder.com

**WILL FRAME**  
253.722.1412  
will.frame@kidder.com

**DREW FRAME**  
253.722.1433  
drew.frame@kidder.com

KIDDER.COM

This information supplied herein is from sources we deem reliable. It is provided without any representation, warranty, or guarantee, expressed or implied as to its accuracy. Prospective Buyer or Tenant should conduct an independent investigation and verification of all matters deemed to be material, including, but not limited to, statements of income and expenses. Consult your attorney, accountant, or other professional advisor.

**km** Kidder Mathews