

4 & 6 PARKLANE BOULEVARD  
DEARBORN, MICHIGAN

OFFICE FOR LEASE

538 – 61,438 Square Feet Available



**SIGNATURE  
ASSOCIATES**  
KNOW SIGNATURE | KNOW RESULTS

**FAIRLANE OFFICENTRE**



## PROPERTY FEATURES

- 538 – 61,438 square feet available
- Outstanding office building with recent, significant renovations
- Located in the heart of Fairlane development
- Fast freeway access
- Business-ready suites also available
- Amenities include conference center, on-site management and food services
- Lease Rate: \$17.95/sq. ft. G + E



For more information, please contact:

**JACK TOWNSEND**

(248) 948 0115

[jtownsend@signatureassociates.com](mailto:jtownsend@signatureassociates.com)

**CHRIS SECONTINE**

(248) 799 3174

[csecontine@signatureassociates.com](mailto:csecontine@signatureassociates.com)

**SIGNATURE ASSOCIATES**

One Towne Square, Suite 1200

Southfield, MI 48076

[www.signatureassociates.com](http://www.signatureassociates.com)

# 4 & 6 Parklane Boulevard – Dearborn, Michigan

## Office For Lease

538 – 61,438  
Square Feet  
AVAILABLE

### Availability

4 PARKLANE	
SUITE	SQUARE FEET
150	3,357
195	1,033
*250	23,822
305	1,319
307	2,300
312	1,784
315	1,872
340	1,182
360	1,423
414	10,616
465	1,038
470-475	2,521
	<b>52,267</b>

**\* 200, 250 & 370 = 61,438 Contiguous**

6 PARKLANE	
SUITE	SQUARE FEET
104	1,142
106	1,592
135	2,187
*200	25,541
*370	12,075
428	2,149
430	1,043
440	1,157
442	1,101
451	6,956
515	744
520	810
560	2,843
570	3,266
580	2,300
640	1,076
673	995
690	2,350
	<b>69,237</b>

For more information, please contact:

**JACK TOWNSEND**

(248) 948 0115

[jtownsend@signatureassociates.com](mailto:jtownsend@signatureassociates.com)

**CHRIS SECONTINE**

(248) 799 3174

[csecontine@signatureassociates.com](mailto:csecontine@signatureassociates.com)

**SIGNATURE ASSOCIATES**

One Towne Square, Suite 1200

Southfield, MI 48076

[www.signatureassociates.com](http://www.signatureassociates.com)

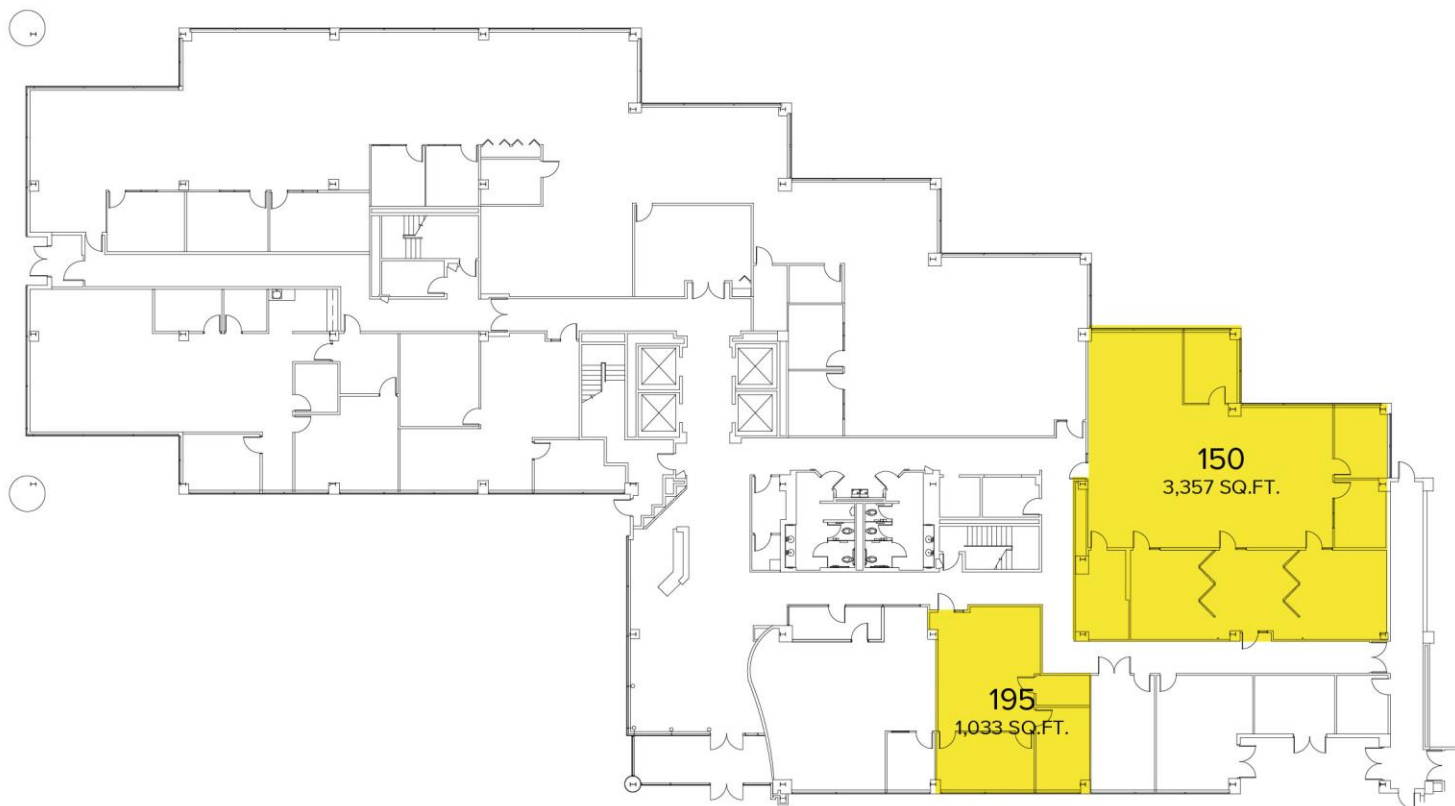
Information is subject to verification and no liability for errors or omissions is assumed. Price is subject to change and listing withdrawal.

# 4 & 6 Parklane Boulevard – Dearborn, Michigan

## Office For Lease

538 – 61,438  
Square Feet  
AVAILABLE

### 4 PARKLANE – FIRST FLOOR



### 4 PARKLANE – SECOND FLOOR



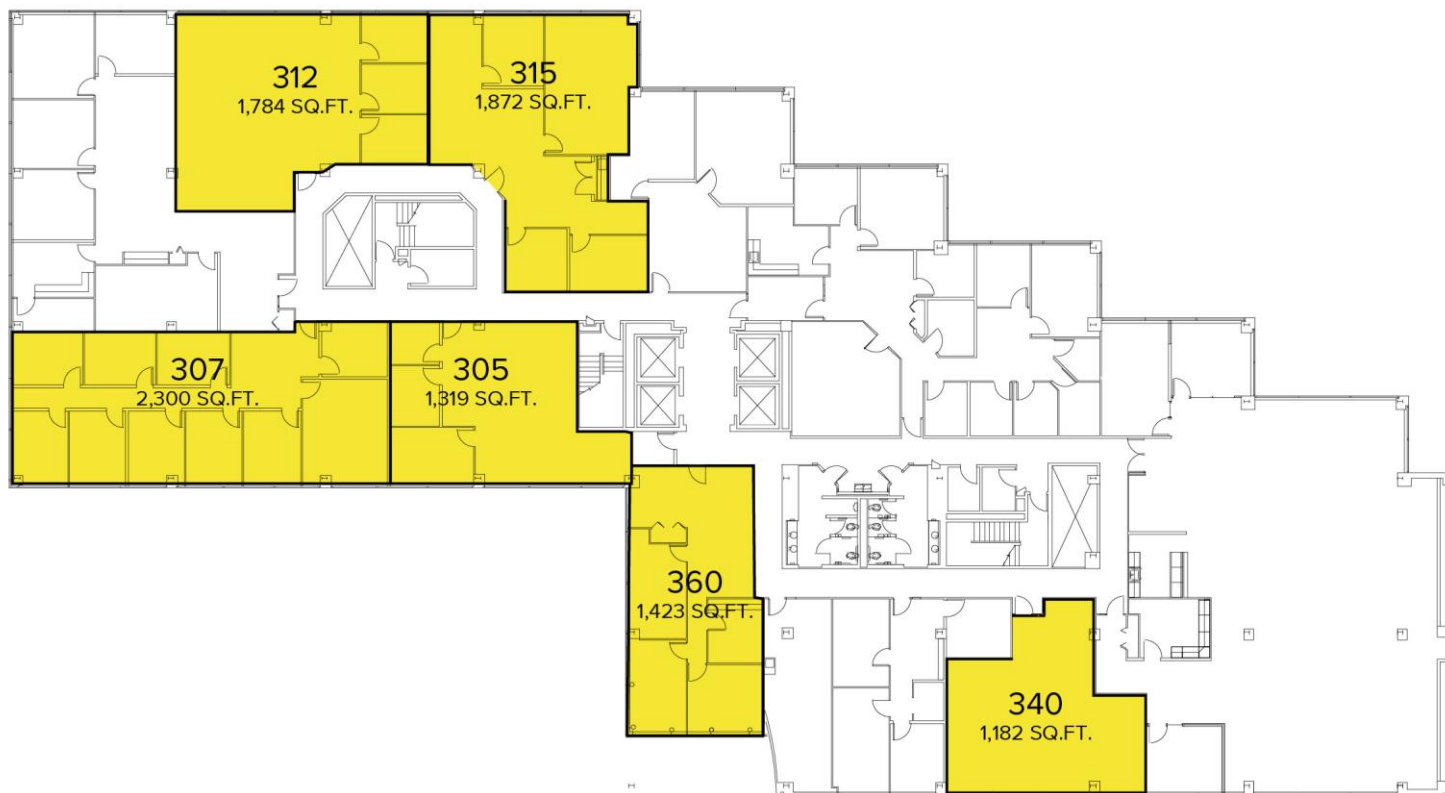
Information is subject to verification and no liability for errors or omissions is assumed. Price is subject to change and listing withdrawal.

# 4 & 6 Parklane Boulevard – Dearborn, Michigan

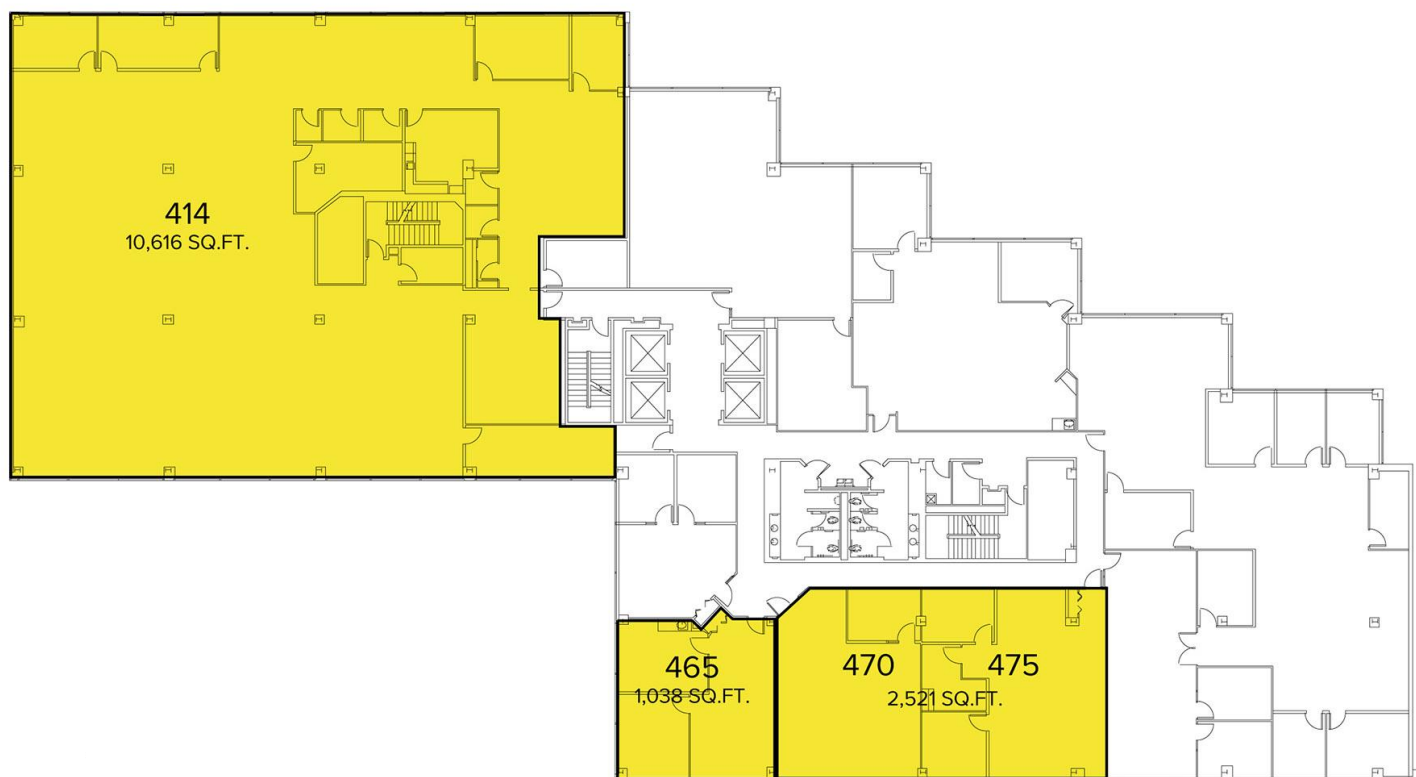
## Office For Lease

538 – 61,438  
Square Feet  
AVAILABLE

### 4 PARKLANE – THIRD FLOOR



### 4 PARKLANE – FOURTH FLOOR



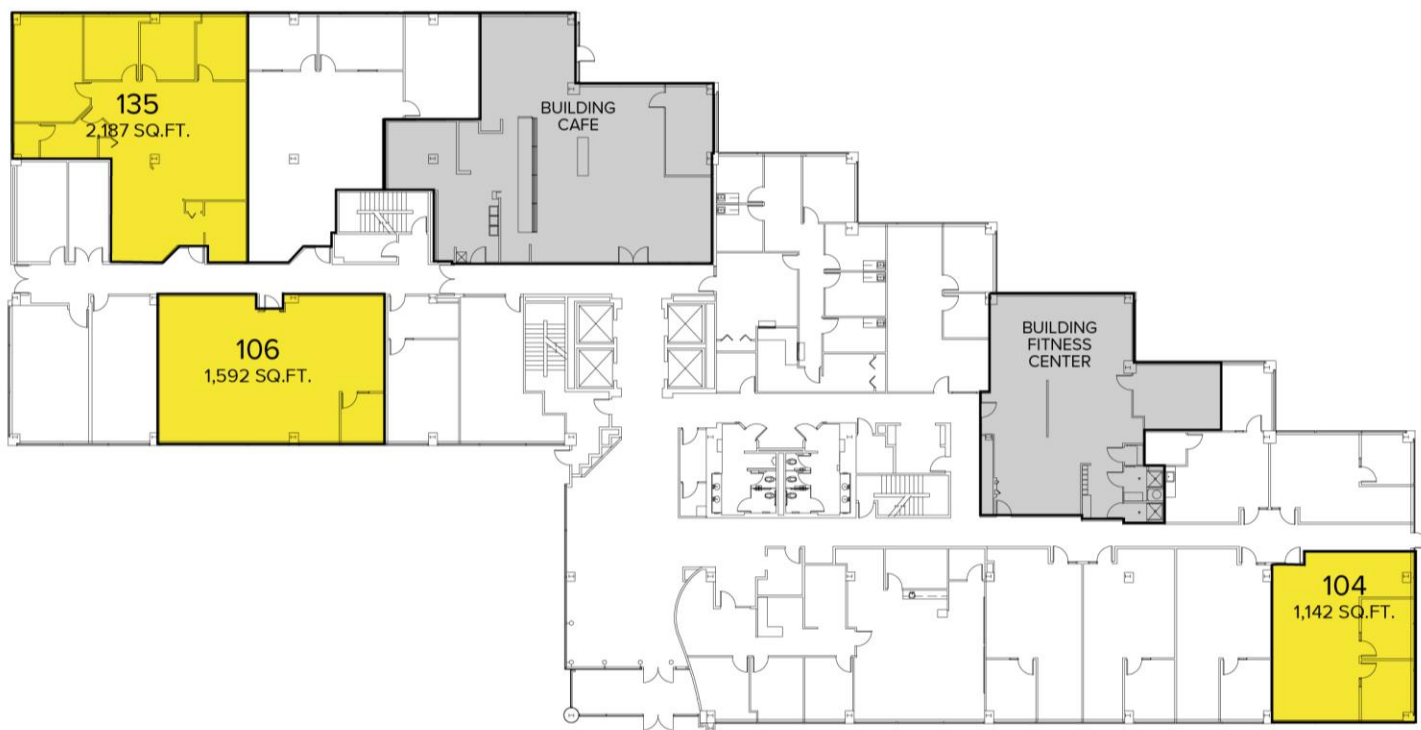
Information is subject to verification and no liability for errors or omissions is assumed. Price is subject to change and listing withdrawal.

# 4 & 6 Parklane Boulevard – Dearborn, Michigan

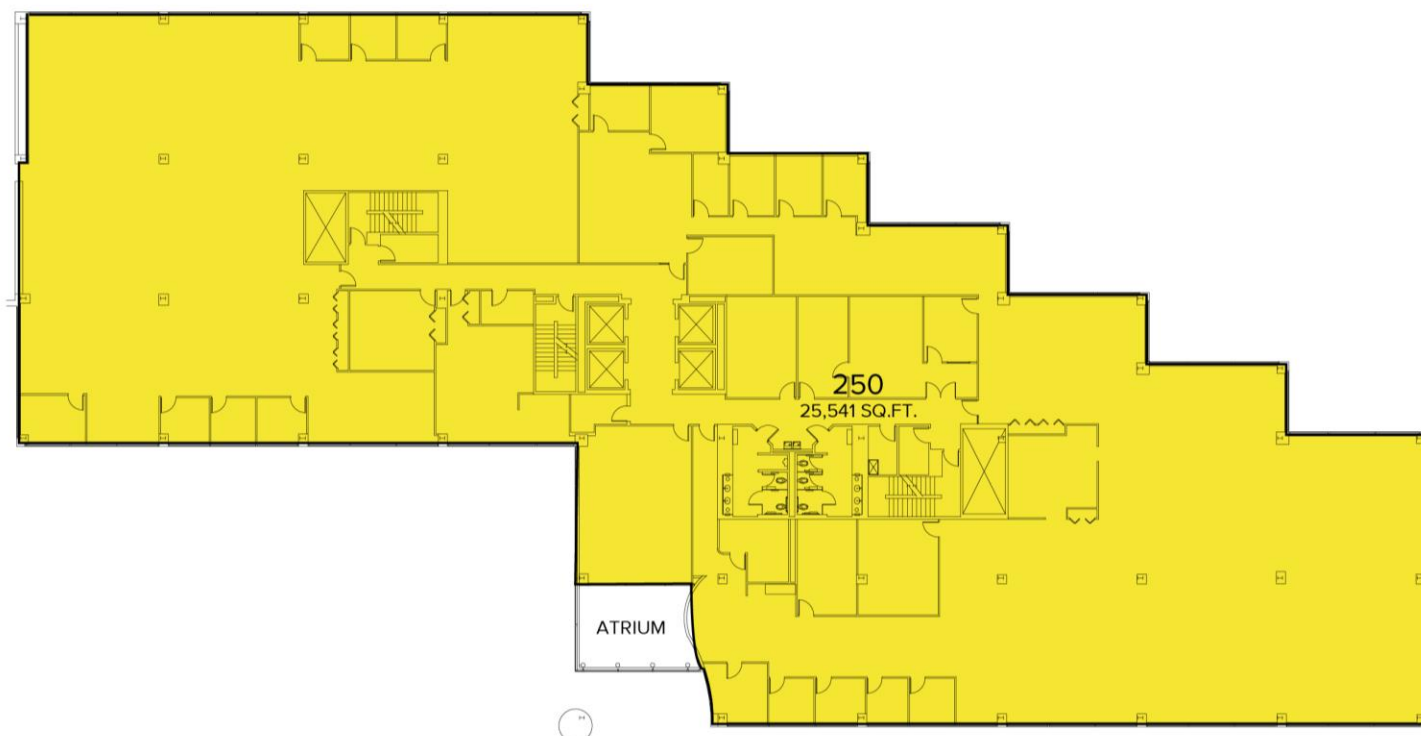
## Office For Lease

538 – 61,438  
Square Feet  
AVAILABLE

### 6 PARKLANE – FIRST FLOOR



### 6 PARKLANE – SECOND FLOOR



Information is subject to verification and no liability for errors or omissions is assumed. Price is subject to change and listing withdrawal.

# 4 & 6 Parklane Boulevard – Dearborn, Michigan

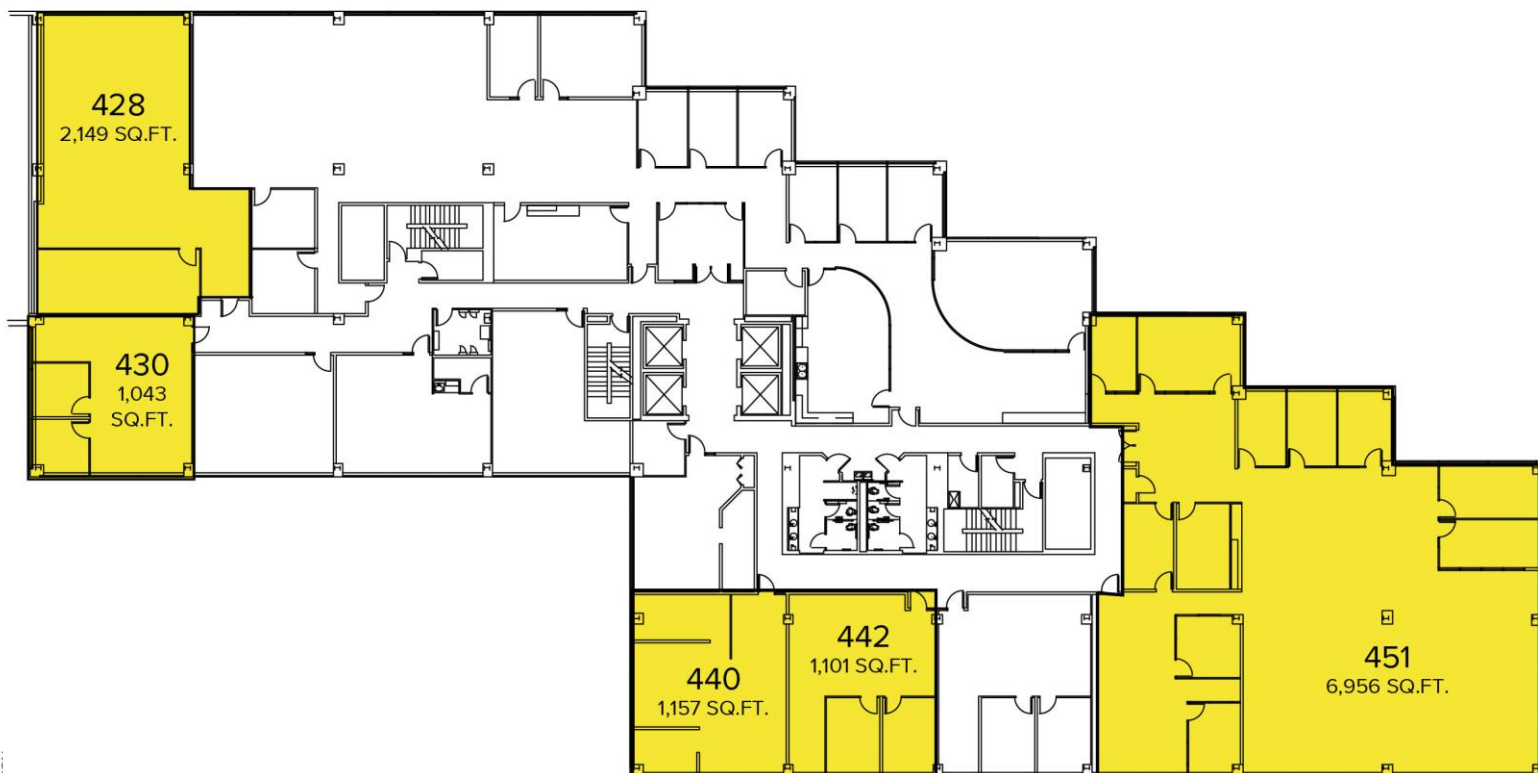
## Office For Lease

538 – 61,438  
Square Feet  
AVAILABLE

### 6 PARKLANE – THIRD FLOOR



### 6 PARKLANE – FOURTH FLOOR



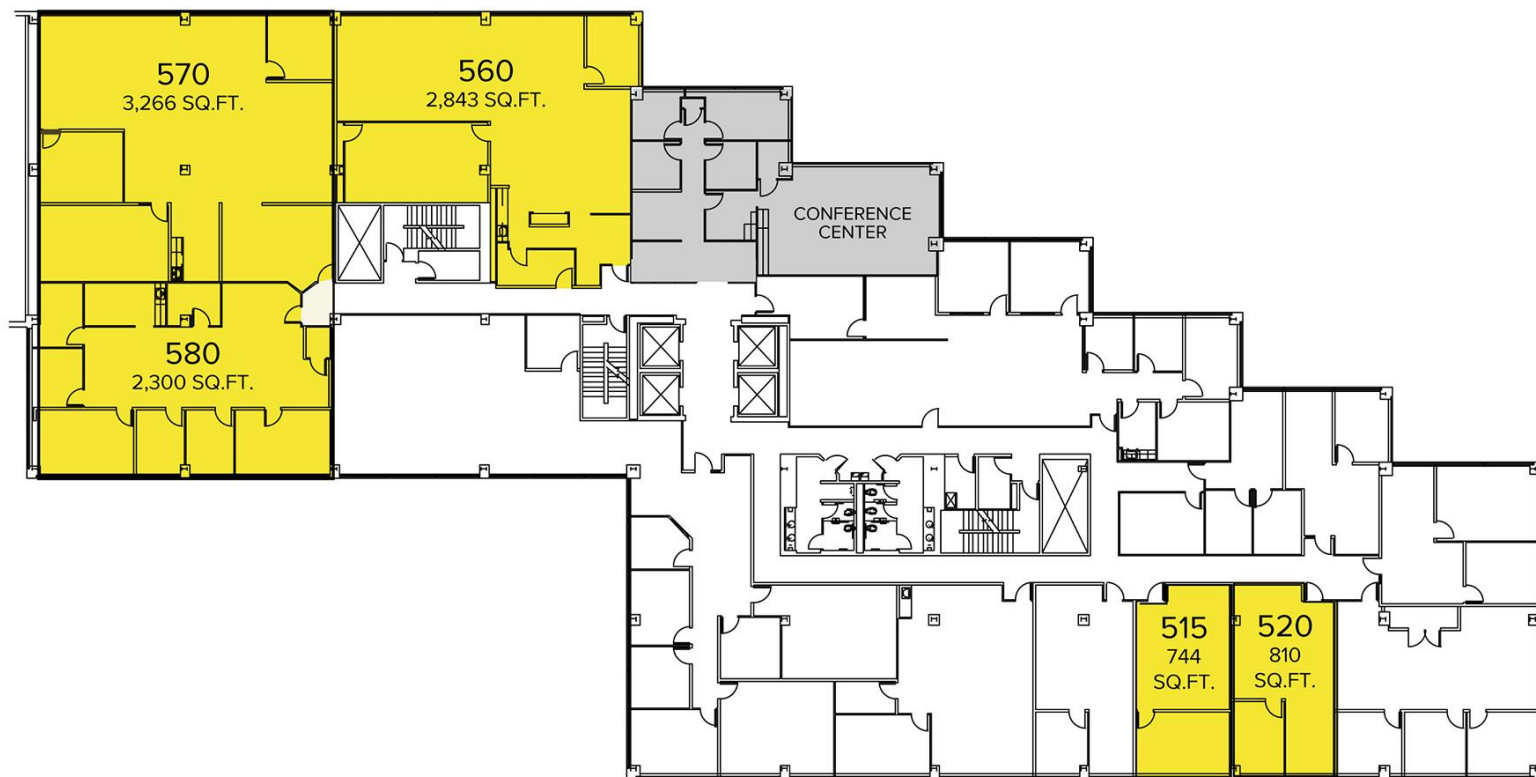
Information is subject to verification and no liability for errors or omissions is assumed. Price is subject to change and listing withdrawal.

# 4 & 6 Parklane Boulevard – Dearborn, Michigan

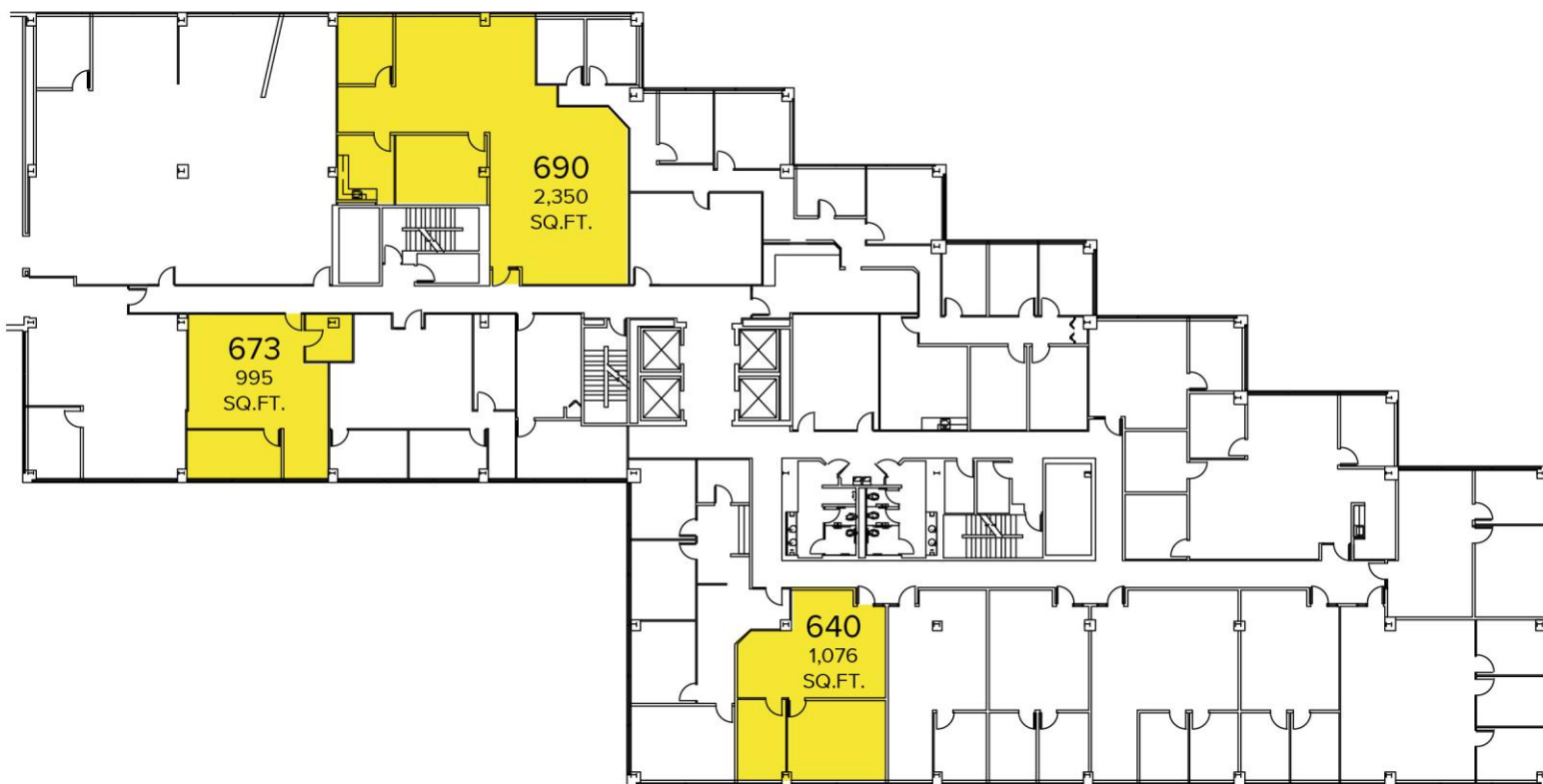
## Office For Lease

538 – 61,438  
Square Feet  
AVAILABLE

### 6 PARKLANE – FIFTH FLOOR



### 6 PARKLANE – SIXTH FLOOR



Information is subject to verification and no liability for errors or omissions is assumed. Price is subject to change and listing withdrawal.

JACK TOWNSEND (248) 948 0115

CHRIS SECONTINE (248) 799 3174

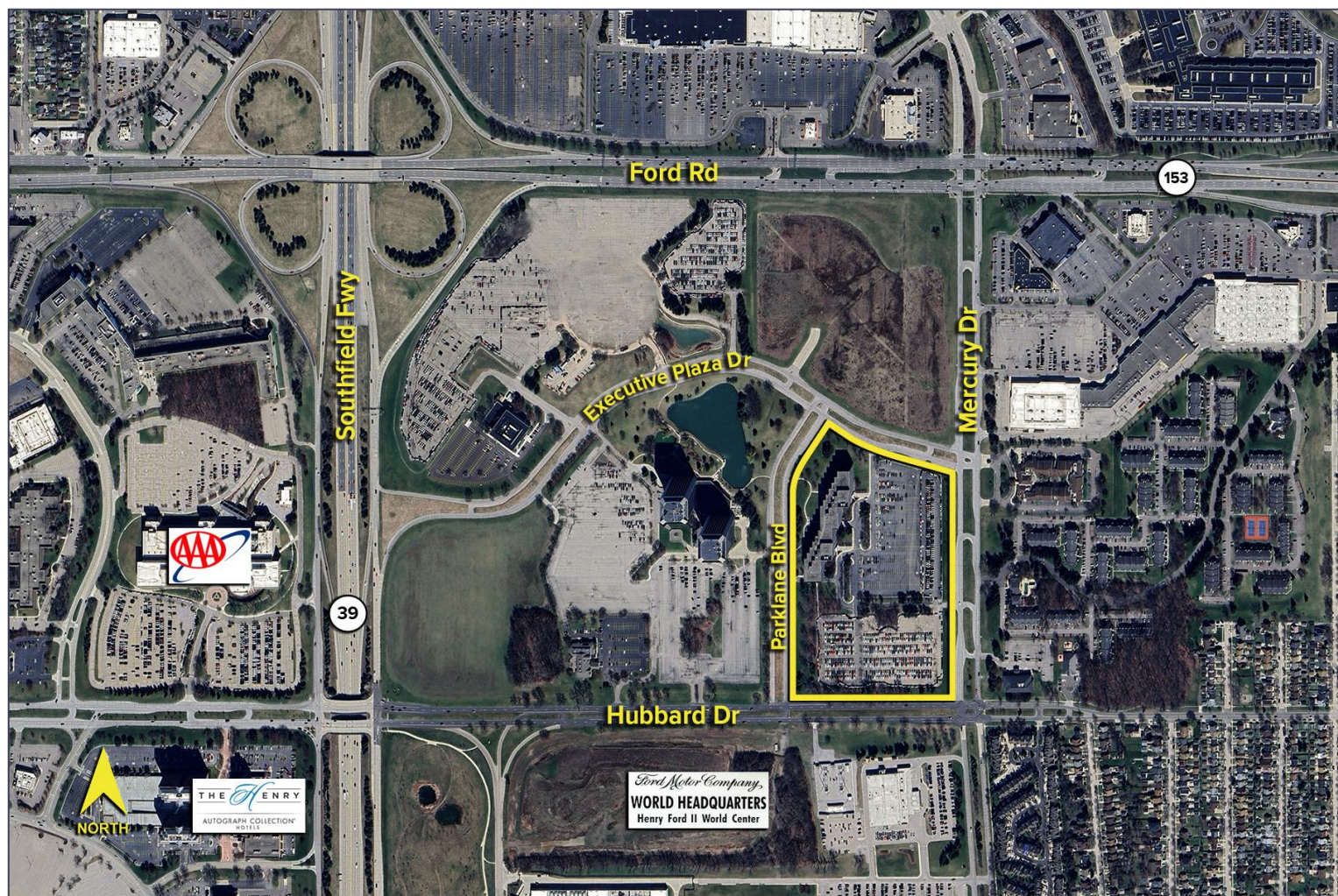
SIGNATURE ASSOCIATES  
[www.signatureassociates.com](http://www.signatureassociates.com)

# 4 & 6 Parklane Boulevard – Dearborn, Michigan

## Office For Lease

538 – 61,438  
Square Feet  
AVAILABLE

Aerial



For more information, please contact:

**JACK TOWNSEND**

(248) 948 0115

[jtownsend@signatureassociates.com](mailto:jtownsend@signatureassociates.com)

**CHRIS SECONTINE**

(248) 799 3174

[csecontine@signatureassociates.com](mailto:csecontine@signatureassociates.com)

**SIGNATURE ASSOCIATES**

One Towne Square, Suite 1200

Southfield, MI 48076

[www.signatureassociates.com](http://www.signatureassociates.com)