



CUSHMAN &  
WAKEFIELD



**FOR LEASE**

# PACIFIC PLAZA

14100 SAN PEDRO AVE  
SAN ANTONIO, TX 78232

BRYAN SETHNEY  
Managing Director  
+1 210 305 4280  
[bryan.sethney@cushwake.com](mailto:bryan.sethney@cushwake.com)

MEREDITH MUECKE HOWARD  
Director  
+1 512 804 9116  
[meredith.howard@cushwake.com](mailto:meredith.howard@cushwake.com)

4040 Broadway Street  
Suite 602  
San Antonio, Texas 78209  
[cushmanwakefield.com](http://cushmanwakefield.com)

# PROPERTY DESCRIPTION

Pacific Plaza is a 7-story, 101,559 SF, class A office Building in North Central San Antonio, with a beautiful 3-story lobby with marble flooring and modern lobby furniture.

## PROPERTY FEATURES

- 670 square-foot building conference room
- Janitorial service 5 nights per week and on-site patrol
- On-site building maintenance and day porter
- 24/7 building access with card access after hours
- Surface parking and garage parking at 3.5/1000 SF
- Covered reserved parking at \$35 per space per month
- Grab and Go Market with lounge

## PROPERTY DETAILS

**RENTAL RATE** \$28.00 SF/YR

**PARKING** 3.5/1,000





## SPACE AVAILABLE

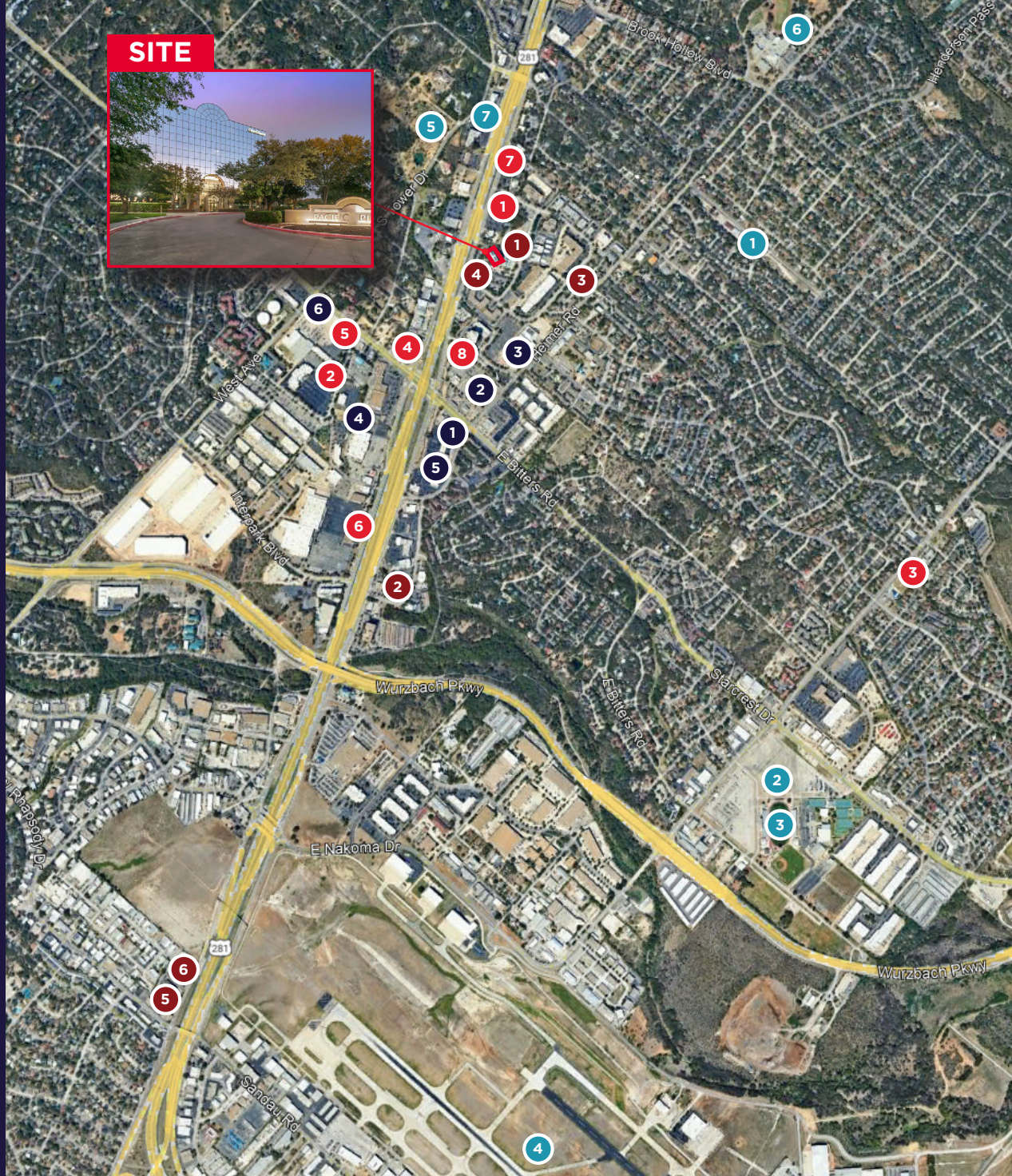
SPACE	SPACE USE	LEASE RATE	LEASE TYPE	SIZE (RSF)
Suite 304	Office	\$28.00/SF/Yr	Full Service	977 RSF
Suite 316	Office	\$28.00/SF/Yr	Full Service	2,738 RSF
Suite 320	Office	\$28.00/SF/Yr	Full Service	1,176 RSF
Suite 410	Office	\$28.00/SF/Yr	Full Service	4,764 RSF
Suite 501	Office	\$28.00/SF/Yr	Full Service	3,931 RSF
Suite 507	Office	\$28.00/SF/Yr	Full Service	3,905 RSF



**LOBBY**

**PROPERTY**





# AMENITY MAP

## RESTAURANTS

- 1 Alamo Cafe
- 2 Max and Louie's New York Diner
- 3 Gogi Street (Korean Fusion)
- 4 Denny's
- 5 Starbucks
- 6 Panera Bread
- 7 IHOP
- 8 Olive Garden Italian Restaurant

## BUSINESSES

- 1 Office Depot
- 2 Target
- 3 The Home Depot
- 4 Goodwill Store and Donation Station
- 5 FedEx Office Print & Ship Center
- 6 7-Eleven

## POINTS OF INTEREST

- 1 Twin-Oaks Airport-T94
- 2 Blossom Athletic Center
- 3 Jerry Comalander Stadium
- 4 San Antonio International Airport
- 5 Sunset Hills Park
- 6 Blossom Park
- 7 One Medical park

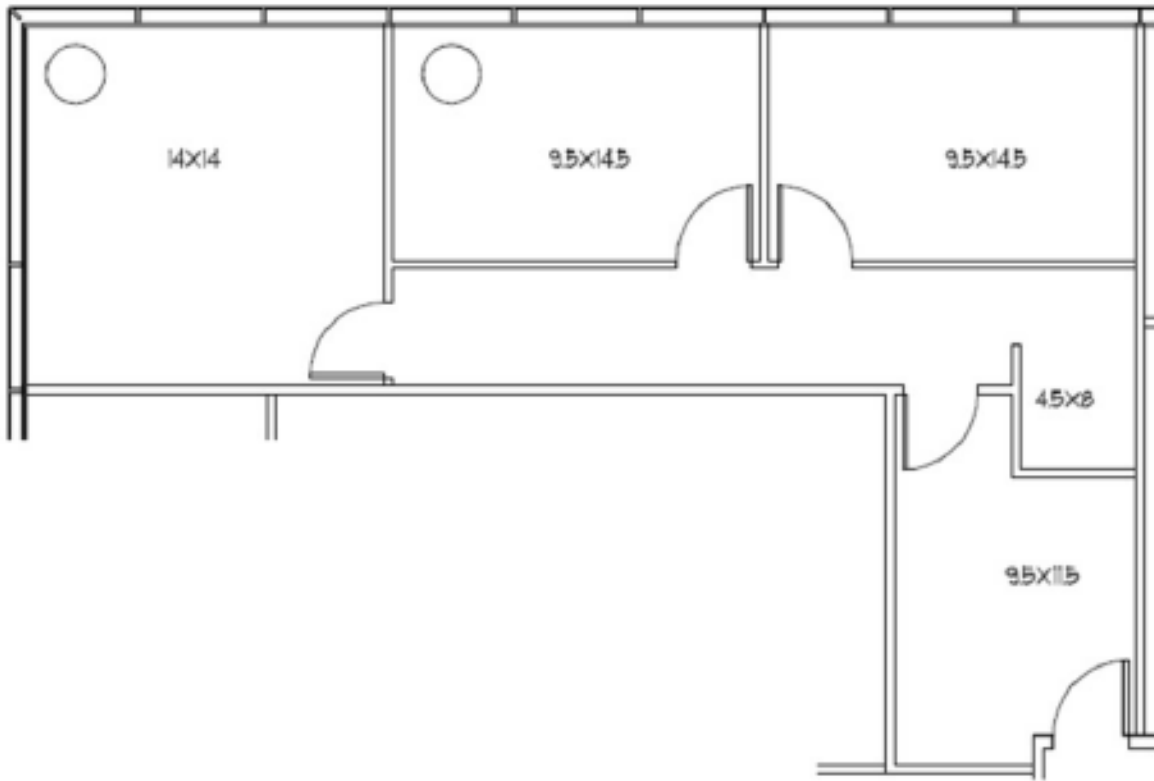
## HOTELS

- 1 Comfort Suites San Antonio
- 2 Hilton Garden Inn
- 3 La Calera Apartments
- 4 Extended Stay America San Antonio TX Airport
- 5 Studio 6 San Antonio TX Airport
- 6 SureStay Plus by Best Western San Antonio

# FLOOR PLAN

AVAILABLE

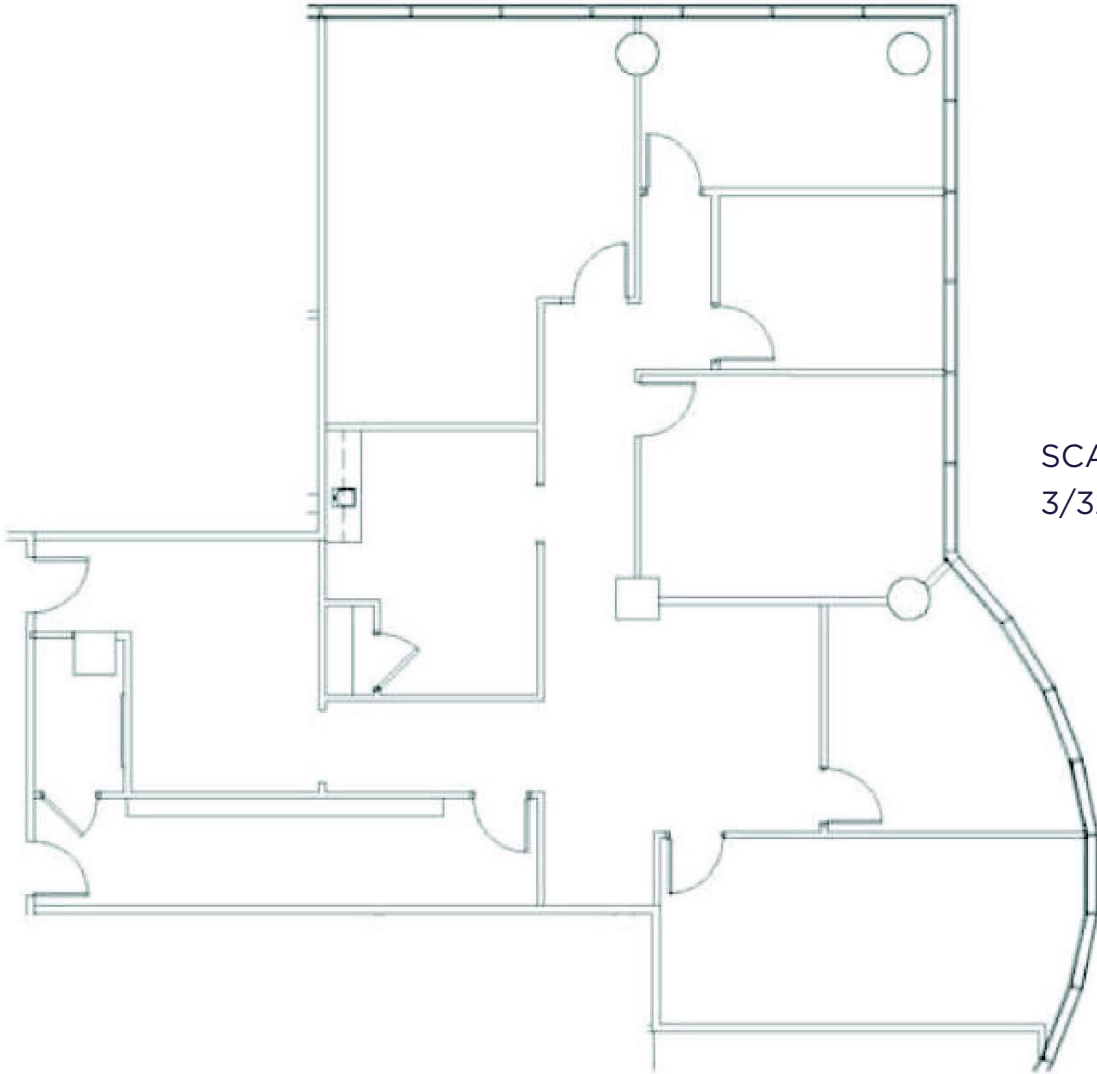
SUITE 304 - 977 SF



# FLOOR PLAN

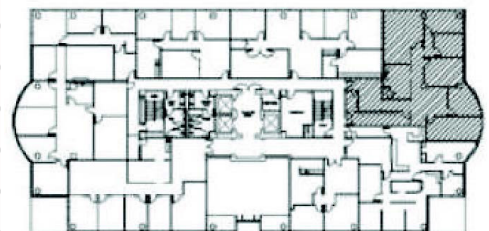
AVAILABLE

SUITE 316 - 2,738 SF



SCALE  
3/32" = 1'-0"

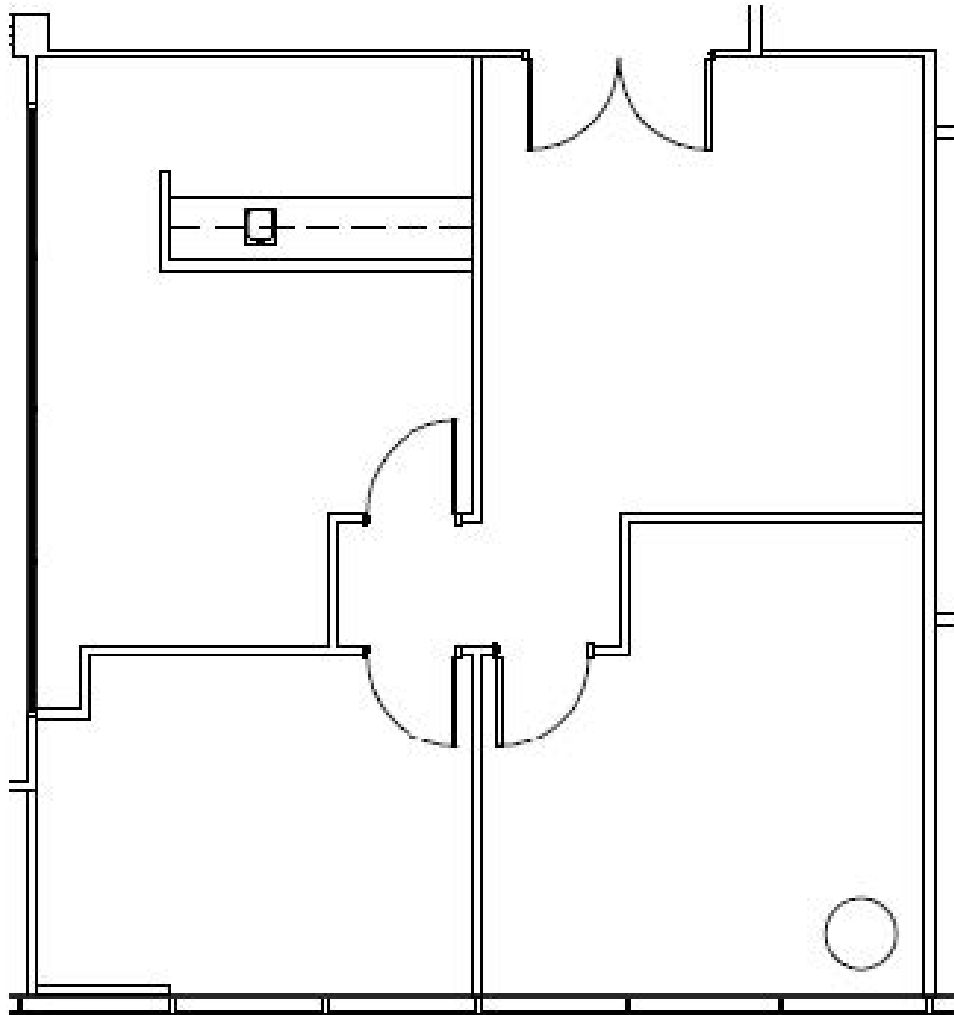
LEVEL 3 LOCATION PLAN



# FLOOR PLAN

AVAILABLE

SUITE 320 - 1,176 SF



SCALE  
1/8" = 1'-0"

LEVEL 3 LOCATION PLAN



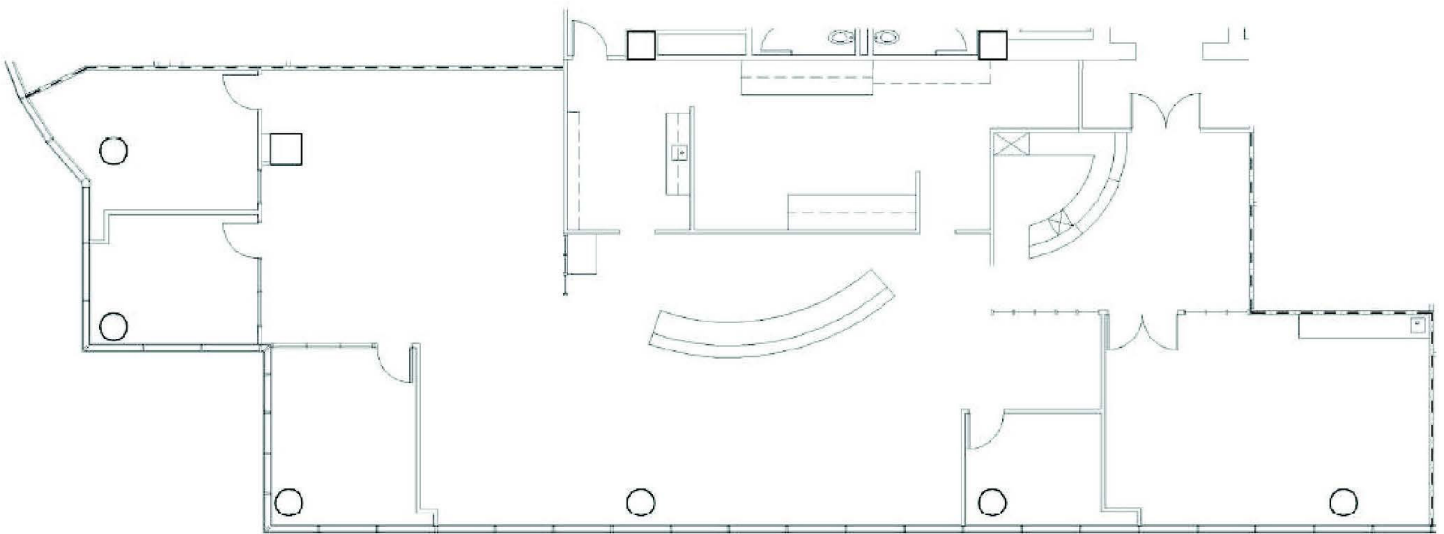


# FLOOR PLAN

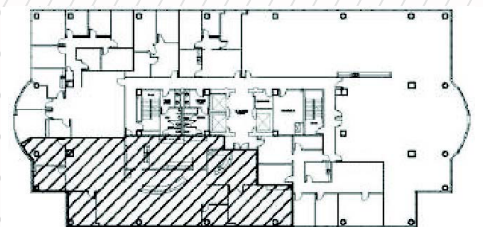
AVAILABLE

**SUITE 410 - 4,764 SF**

SCALE: N.T.S.



LEVEL 4 LOCATION PLAN

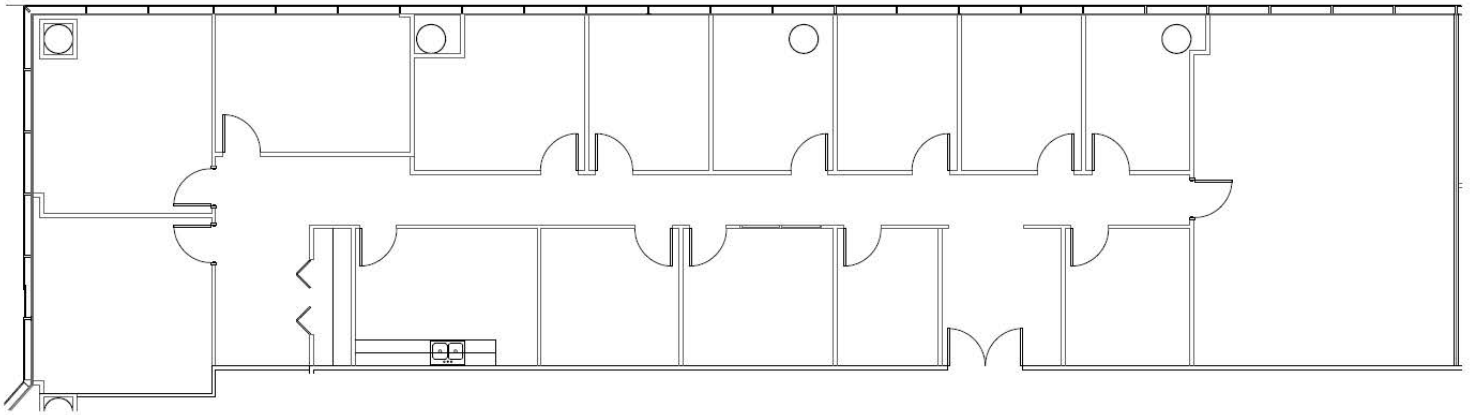


# FLOOR PLAN

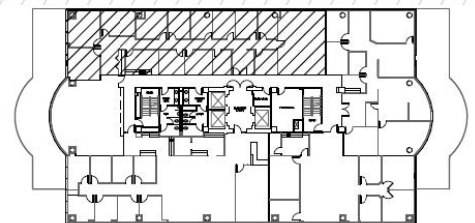
AVAILABLE

**SUITE 501 - 3,931 SF**

SCALE: N.T.S.



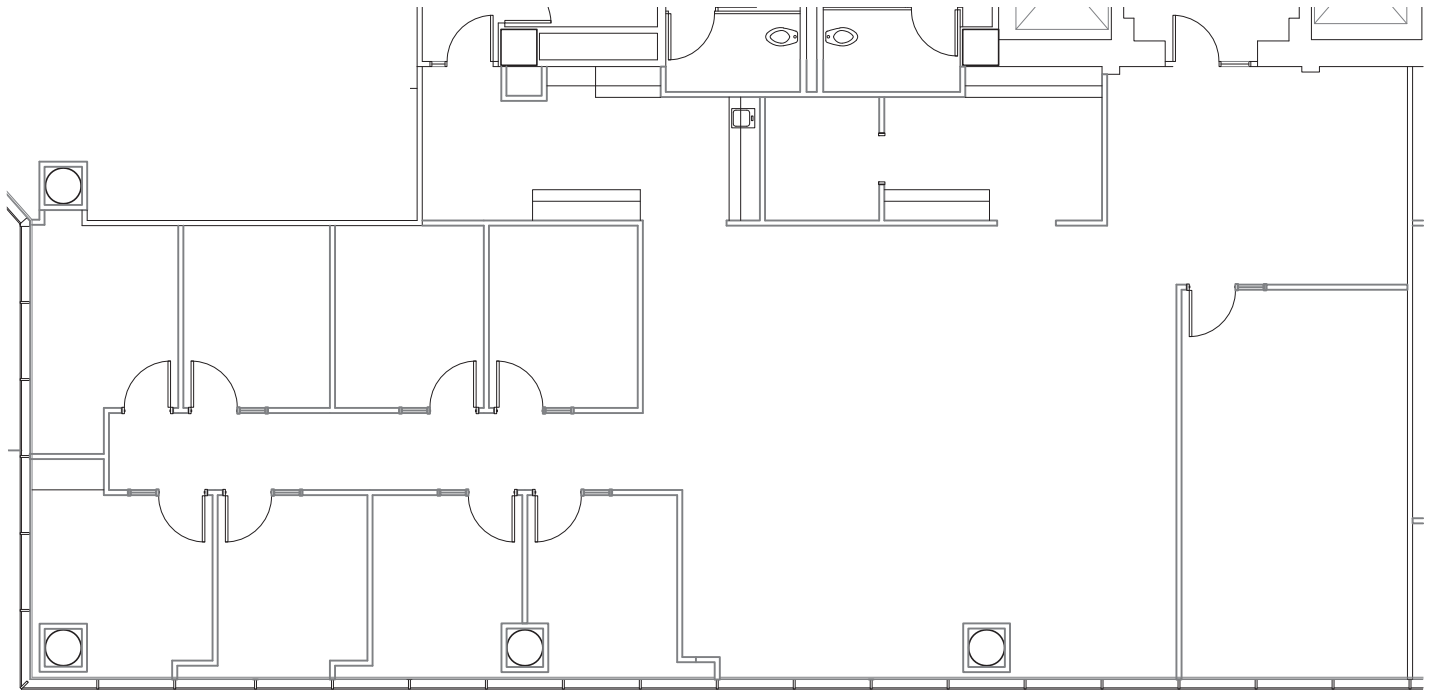
LEVEL 5 LOCATION PLAN



# FLOOR PLAN

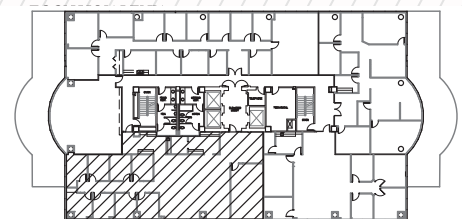
AVAILABLE

**SUITE 570 - 3,905 SF**



SCALE: N.T.S.

LEVEL 5 LOCATION PLAN





Ozona Bank

ClearChoice

**FOR MORE INFORMATION, PLEASE CONTACT:**

BRYAN SETHNEY  
Managing Director  
+1 210 305 4280  
bryan.sethney@cushwake.com

MEREDITH MUECKE HOWARD  
Director  
+1 512 804 9116  
meredith.howard@cushwake.com

4040 Broadway Street  
Suite 602  
San Antonio, Texas 78209  
**cushmanwakefield.com**

©2024 Cushman & Wakefield. All rights reserved. The information contained in this communication is strictly confidential. This information has been obtained from sources believed to be reliable but has not been verified. NO WARRANTY OR REPRESENTATION, EXPRESS OR IMPLIED, IS MADE AS TO THE CONDITION OF THE PROPERTY (OR PROPERTIES) REFERENCED HEREIN OR AS TO THE ACCURACY OR COMPLETENESS OF THE INFORMATION CONTAINED HEREIN, AND SAME IS SUBMITTED SUBJECT TO ERRORS, OMISSIONS, CHANGE OF PRICE, RENTAL OR OTHER CONDITIONS, WITHDRAWAL WITHOUT NOTICE, AND TO ANY SPECIAL LISTING CONDITIONS IMPOSED BY THE PROPERTY OWNER(S). ANY PROJECTIONS, OPINIONS OR ESTIMATES ARE SUBJECT TO UNCERTAINTY AND DO NOT SIGNIFY CURRENT OR FUTURE PROPERTY PERFORMANCE.

