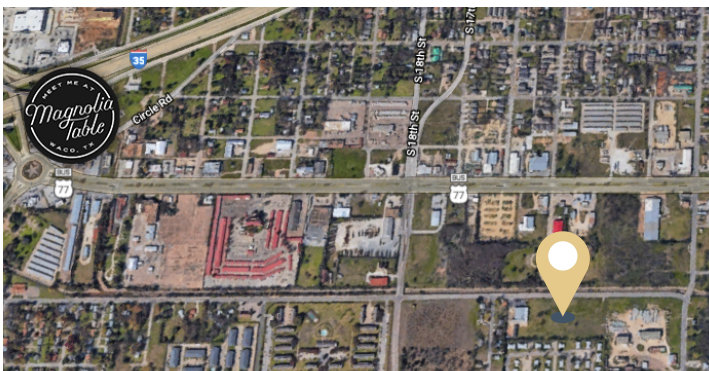




1500 PRIMROSE DRIVE

MULTI-USE | FOR SALE



PROPERTY HIGHLIGHTS

| | | |
|---|-----------|-------------|
| 1 | \$202,000 | 2.319 ACRES |
| 2 | \$190,000 | 2.181 ACRES |

- Zoning M2
- Just down the street from Baylor and Magnolia Table
- Easy access to I-35 and Highway 6
- Great multi-use commercial property



JOSH BARRETT
COMMERCIAL SALES
JOSH@TBRETEXAS.com

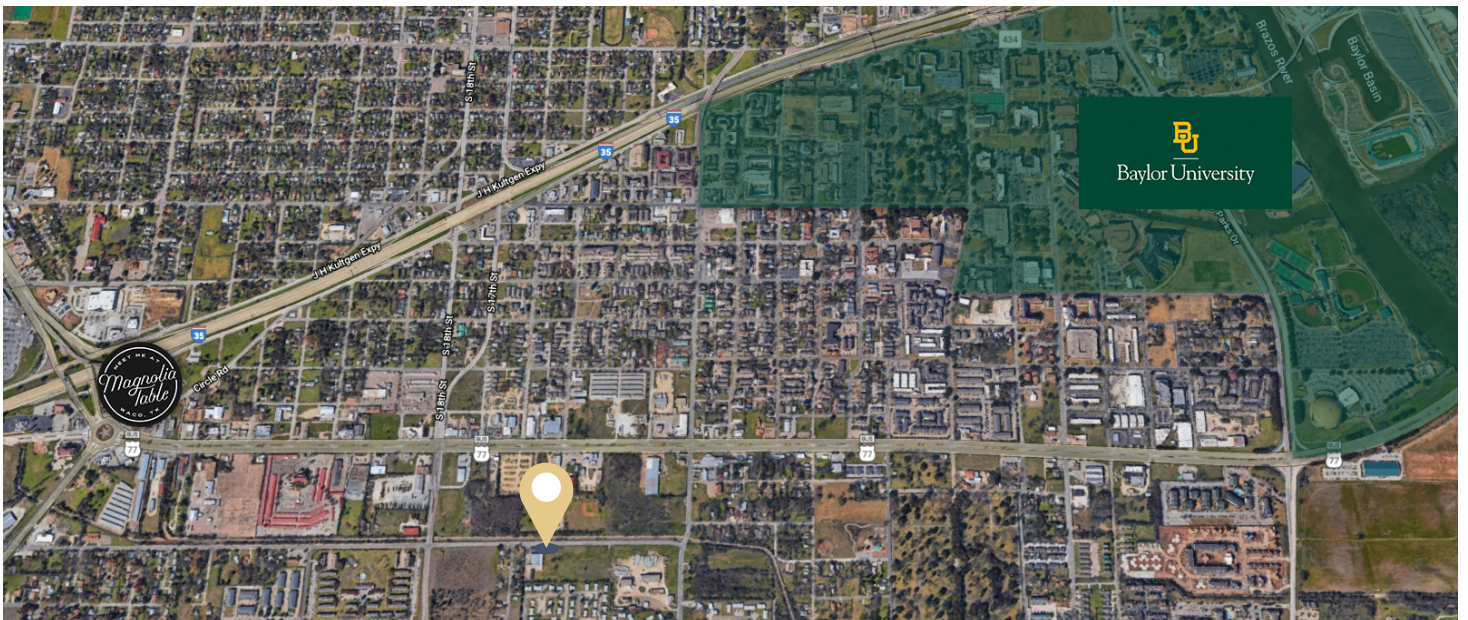
The information contained herein is derived from sources deemed reliable, but no warranty or representation is made or assumed for the accuracy thereof and the same is submitted subject to errors, omissions, change of price, rental or other conditions prior to sale or lease.

TURNER | BEHRINGER
COMMERCIAL



1500 PRIMROSE DRIVE

MULTI-USE | FOR SALE



JOSH BARRETT
COMMERCIAL SALES
JOSH@TBRETEXAS.com

The information contained herein is derived from sources deemed reliable, but no warranty or representation is made or assumed for the accuracy thereof and the same is submitted subject to errors, omissions, change of price, rental or other conditions prior to sale or lease.

TURNER | BEHRINGER
COMMERCIAL