

# INGLESIDE

---

## INDUSTRIAL

# 118,510 SF

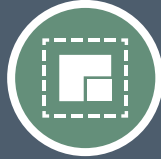
## BUILD TO SUIT OPPORTUNITY

Located in thriving Palmetto Commerce Park near Boeing Interiors, Daimler, Cummins, and Shimano.



## property highlights

SIZE: 118,510 SF



CLEAR HEIGHT: 32'



YEAR BUILT:  
BUILD TO SUIT



SPRINKLER: ESFR



DOCK DOOR: UP TO 34



- Willing to consider multiple building format as small as 40,000 SF building
- Located in thriving Palmetto Commerce Park in North Charleston, SC near Boeing Interiors, Daimler, Cummins and Shimano.
- 148 Auto Parking Spaces.



site map

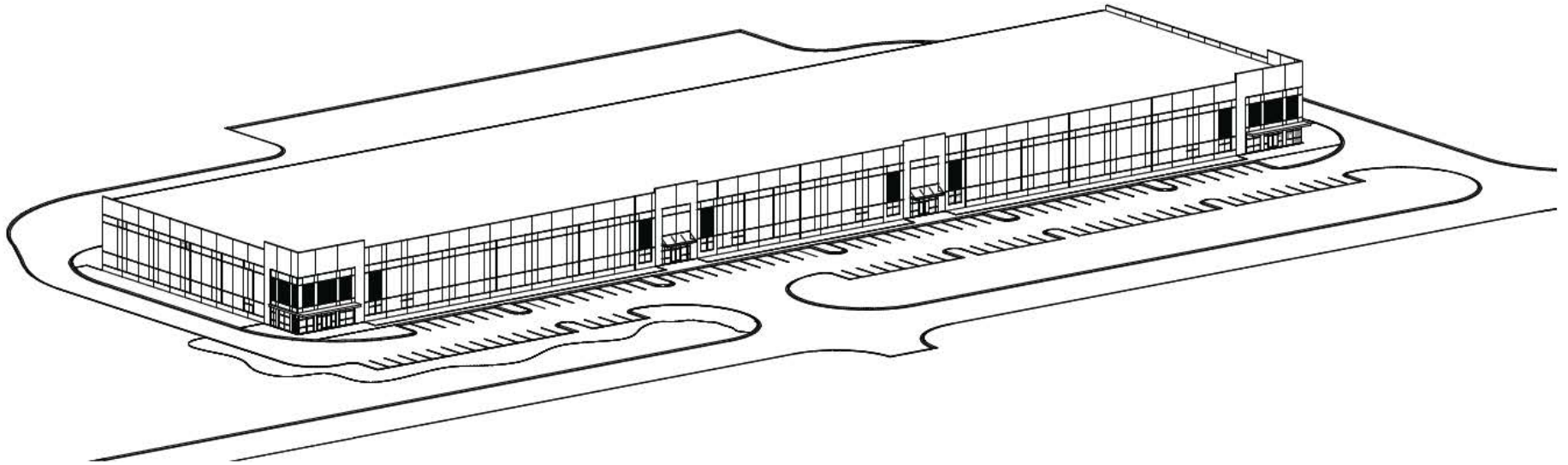


- 1 Daimler Vans Manufacturing
- 2 Boeing Interiors
- 3 Cummins Manufacturing
- 4 Agro Merchants Group
- 5 Geodis
- 6 Zinus
- 7 Origin Point Brands
- 8 Southeastern Freight Lines
- 9 Fruit of the Loom
- 10 Continental Terminals
- 11 FedEx Ground
- 12 FedEx Ship Center
- 13 XPO
- 14 Wabco
- 15 Bosch Plant
- 16 Boeing
- 17 Mahle
- 18 Kontane Logistics
- 19 Gildan

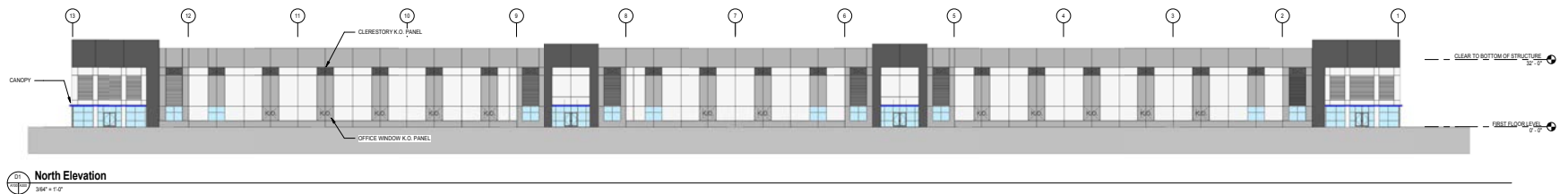
- Charleston International Airport
- North Charleston Port Terminal
- Wando Port Terminal

North Charleston Port Terminal	.12 miles
Interstate 26	3.5 miles
Mercedes-Benz Vans	2.8 miles
Charleston International Airport	9.6 miles

Boeing Main Campus	10 miles
SPAWAR	12 miles
SPA Wando Port Terminal	19 miles
VOLVO	28 miles



## proposed elevations



# proposed site plan



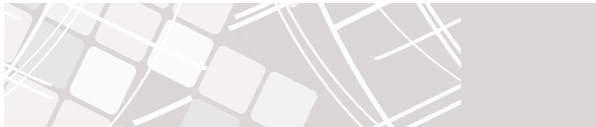
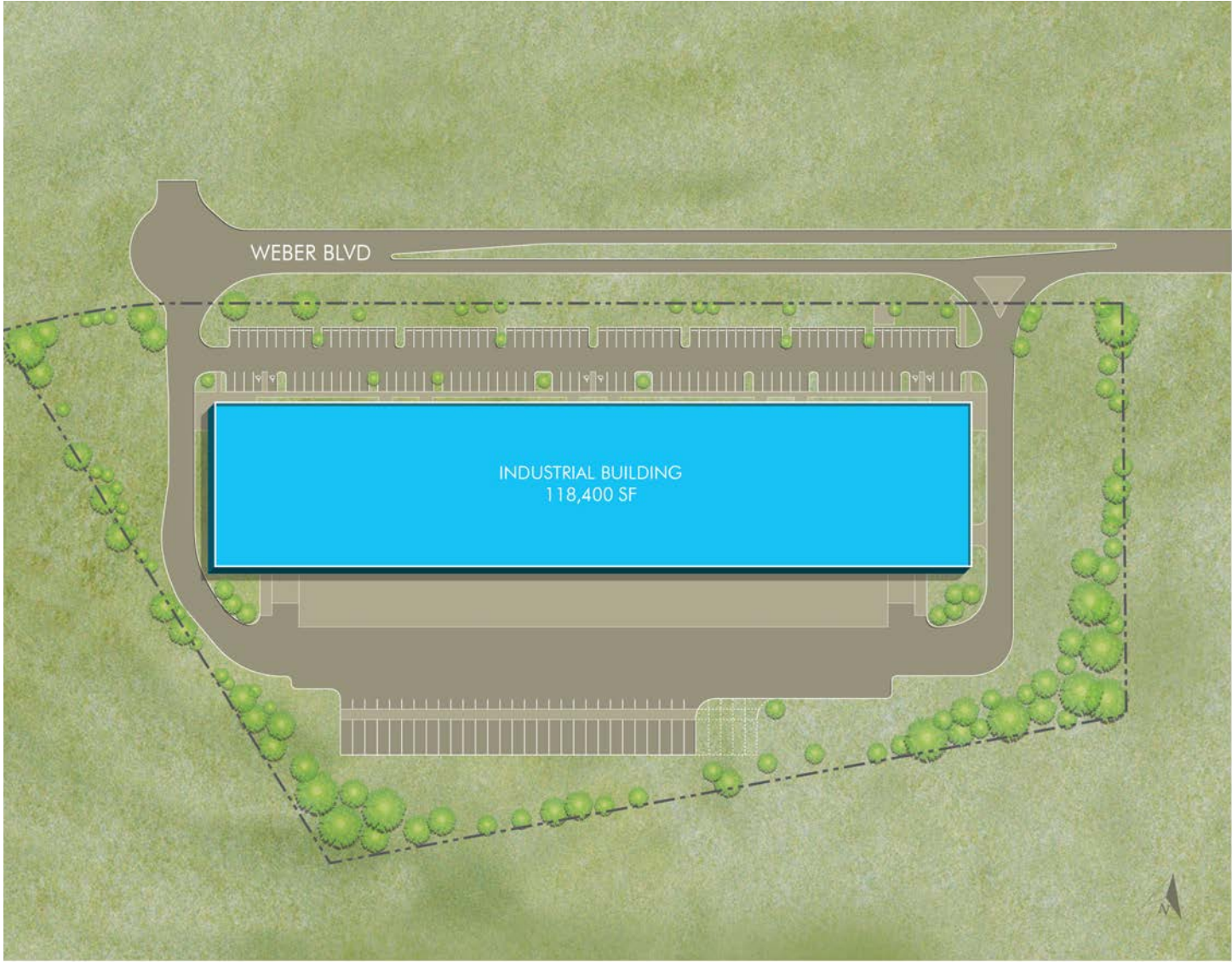
SIZE	118,510 SF
OFFICE SIZE	To Suit
COLUMN SPACING	50' x 52' and 60' Speed Bay
SPRINKLER	ESFR
CLEAR HEIGHT	32'
LIGHTING	LED

PARKING	148 Auto Spaces
TRUCK COURT	130'
DOCK DOORS	20 (knock out panels exist for 14 additional dock high doors)
DRIVE IN DOORS	To Suit



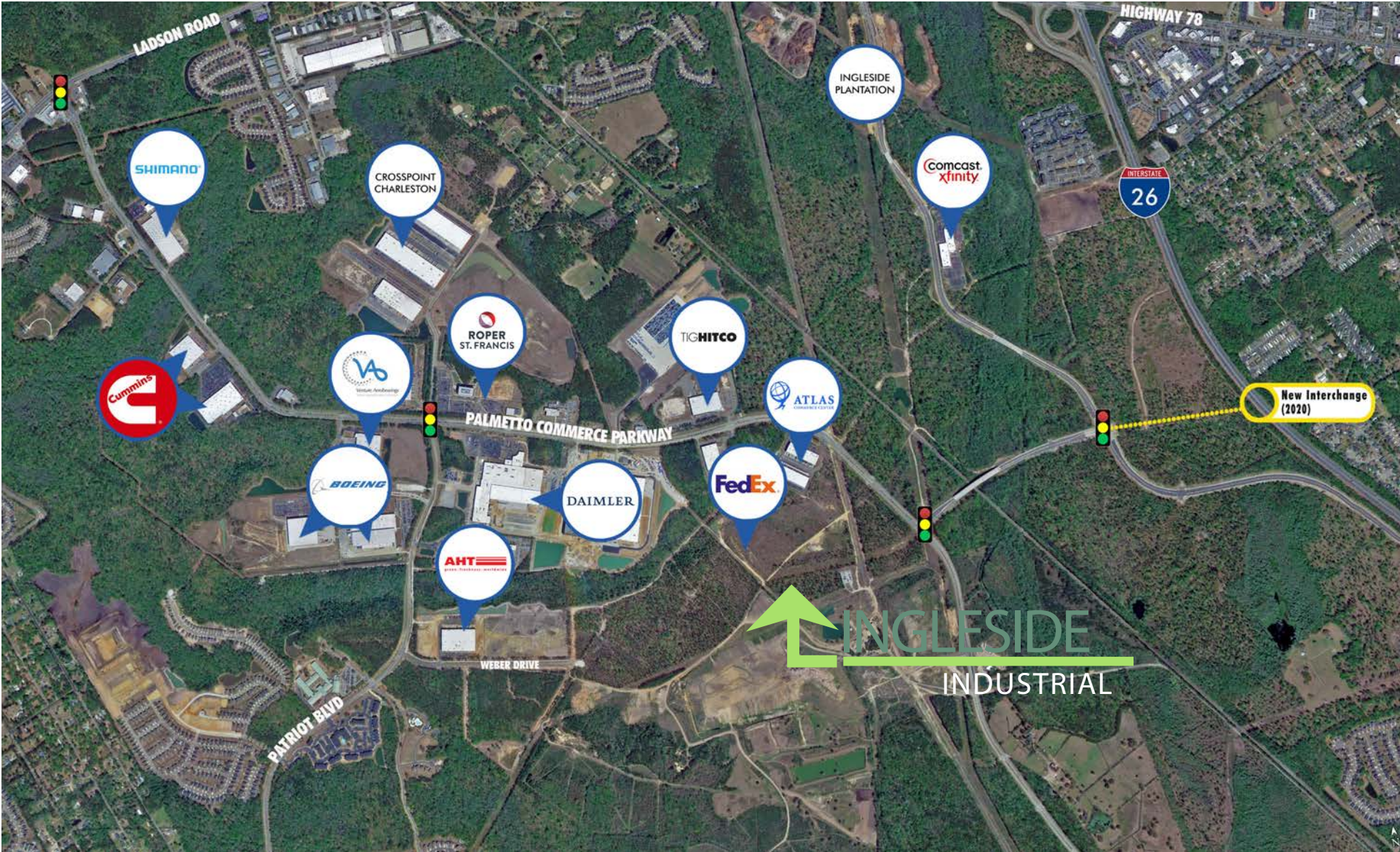


alternative site plan | two building layout plan





aerial map





PALMETTO COMMERCE PARK | NORTH CHARLESTON, SC

# INGLESIDE

## INDUSTRIAL



FOR MORE INFORMATION  
CONTACT:

Bob Barrineau  
Senior Vice President  
[robert.barrineau@cbre.com](mailto:robert.barrineau@cbre.com)  
+1 843 577 1157

Brendan Redeyoff  
First Vice President  
[brendan.redeyoff@cbre.com](mailto:brendan.redeyoff@cbre.com)  
+1 843 577 1167

CBRE, INC. | LICENSED REAL ESTATE BROKER

© 2018 CBRE, Inc. All rights reserved. This information has been obtained from sources believed reliable, but has not been verified for accuracy or completeness. Any projections, opinions, or estimates are subject to uncertainty. The information may not represent the current or future performance of the property. You and your advisors should conduct a careful, independent investigation of the property and verify all information. Any reliance on this information is solely at your own risk. CBRE and the CBRE logo are service marks of CBRE, Inc. and/or its affiliated or related companies in the United States and other countries. All other marks displayed on this document are the property of their respective owners. Photos herein are the property of their respective owners and use of these images without the express written consent of the owner is prohibited. PMStudio\_December2019



# CBRE