

# 7076 S ALTON BLDG H

navpoint  
REAL ESTATE GROUP

## FLEX/OFFICE BUILDING FOR LEASE

7076 S Alton Way, Centennial, CO 80112



**MATT KULBE** *Principal*  
matt.kulbe@navpointre.com  
p: 720.635.4591



**JEFF BRANDON, SIOR** *Principal*  
jeff.brandon@navpointre.com  
p: 303.870.4091



**JORDAN BURGESS** *Associate*  
jordan.burgess@navpointre.com  
p: 970.371.4428



# BUILDING INFORMATION



LEASE RATE

**\$19/SF MG**



BUILDING SIZE

**7,892 SF**



SPACE AVAILABLE

**4,000 SF**



LEASE TYPE

**MODIFIED GROSS**



CLEAR HEIGHT

**12'-14'**



ZONING

**BP75 CENTENNIAL**

[Click Here](#)



PARKING RATIO

**5/1000**



GRADE LEVEL DOORS

**2\***

\*Landlord will install drive in doors if needed

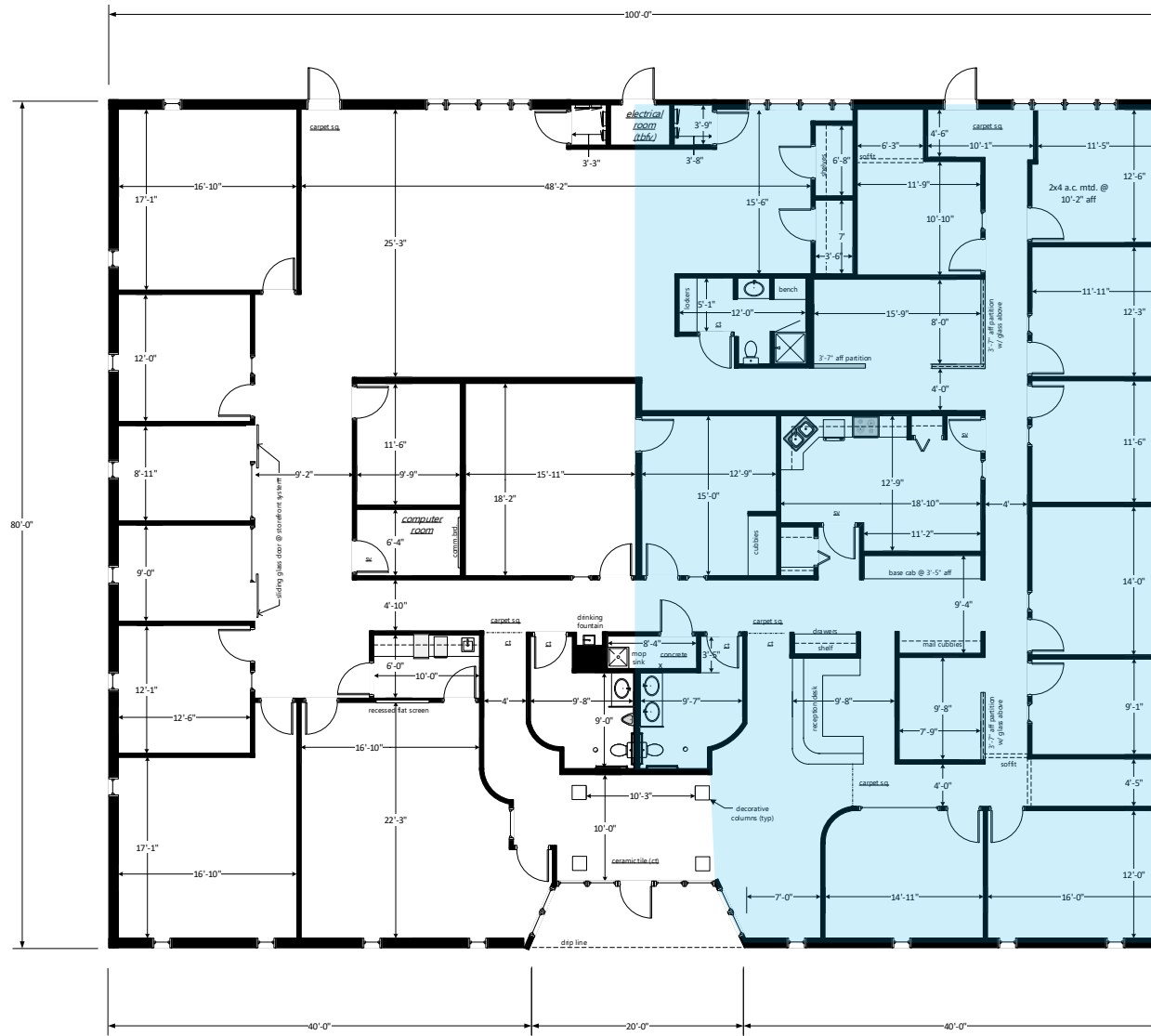


## PROPERTY HIGHLIGHTS

- 4,000 SF of office/flex space available for lease
- Potential to Add More warehouse and Install up to two (2) drive in doors
- Very Nice Finishes throughout
- Efficient Office Layout with Lots of Natural Light, Private Offices, Bullpen Area, Kitchen and Bathrooms
- Excellent parking
- Close Proximity to Many Amenities, Restaurants, Retail, etc.

# FLOOR PLAN

SPACE AVAILABLE





# PROPERTY PHOTOS

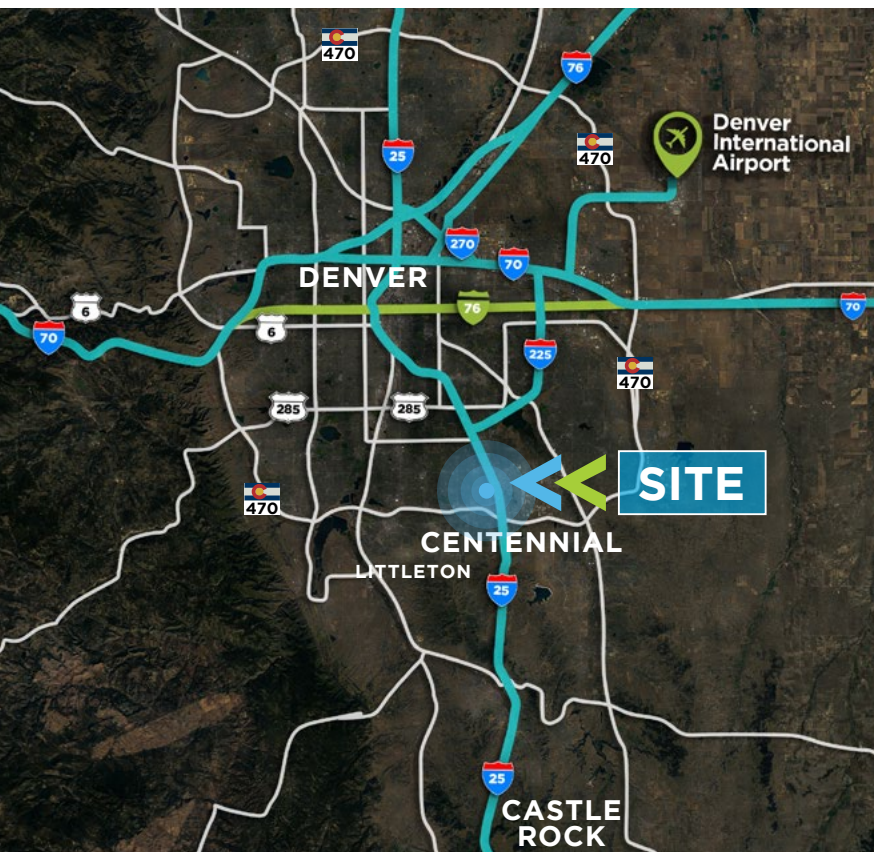




# LOCATION DETAILS

## CENTENNIAL, COLORADO

Centennial is a home rule municipality located in Arapahoe County, Colorado, United States. The city population was 108,418 at the 2020 United States Census, making Centennial the 11th most populous municipality in Colorado.





# 7076 S ALTON BLDG H

navpoint  
REAL ESTATE GROUP

## FLEX/OFFICE BUILDING FOR LEASE

7076 S Alton Way, Centennial, CO 80112



**MATT KULBE** *Principal*  
matt.kulbe@navpointre.com  
p: 720.635.4591



**JEFF BRANDON, SIOR** *Principal*  
jeff.brandon@navpointre.com  
p: 303.870.4091



**JORDAN BURGESS** *Associate*  
jordan.burgess@navpointre.com  
p: 970.371.4428