

PLUG-AND-PLAY · TRIBECA, NYC

80 White Street

3RD FLOOR

6,250 SF

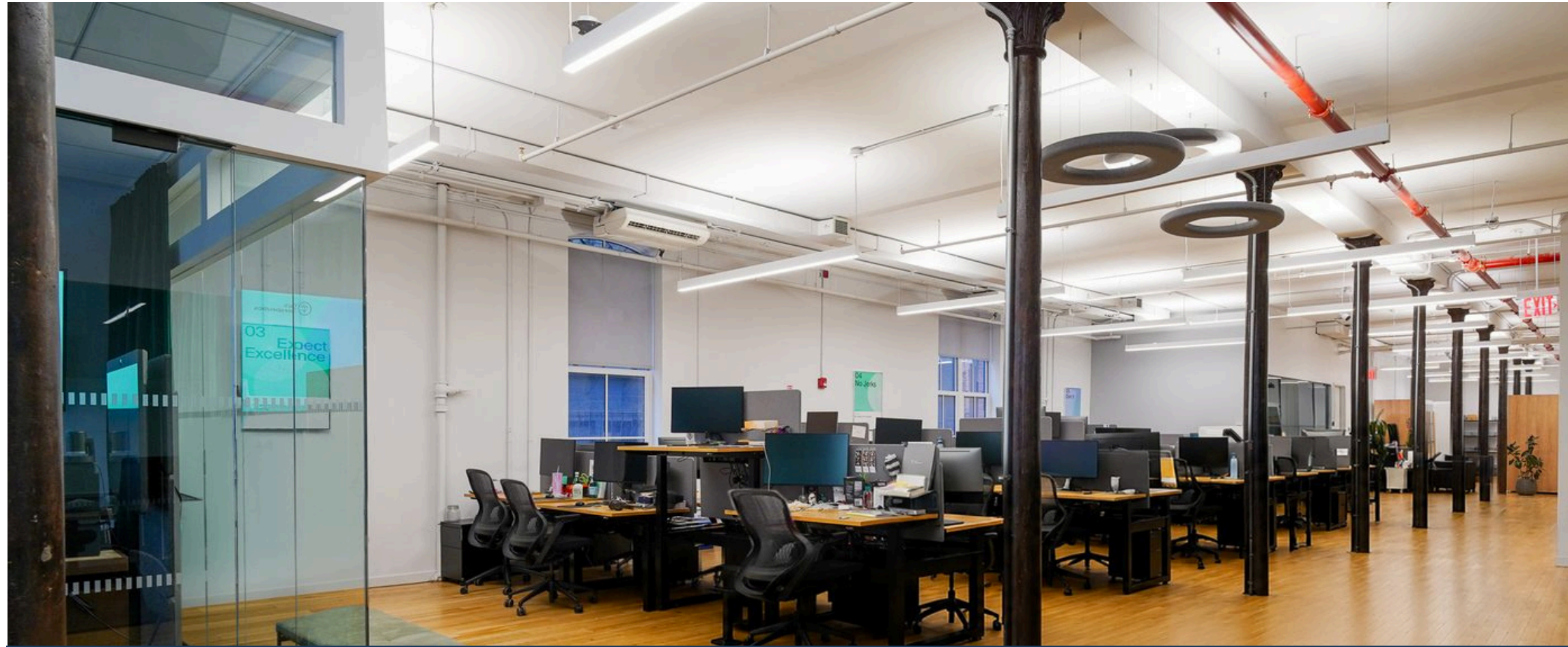
Full Floor · Plug-and-Play

4TH FLOOR

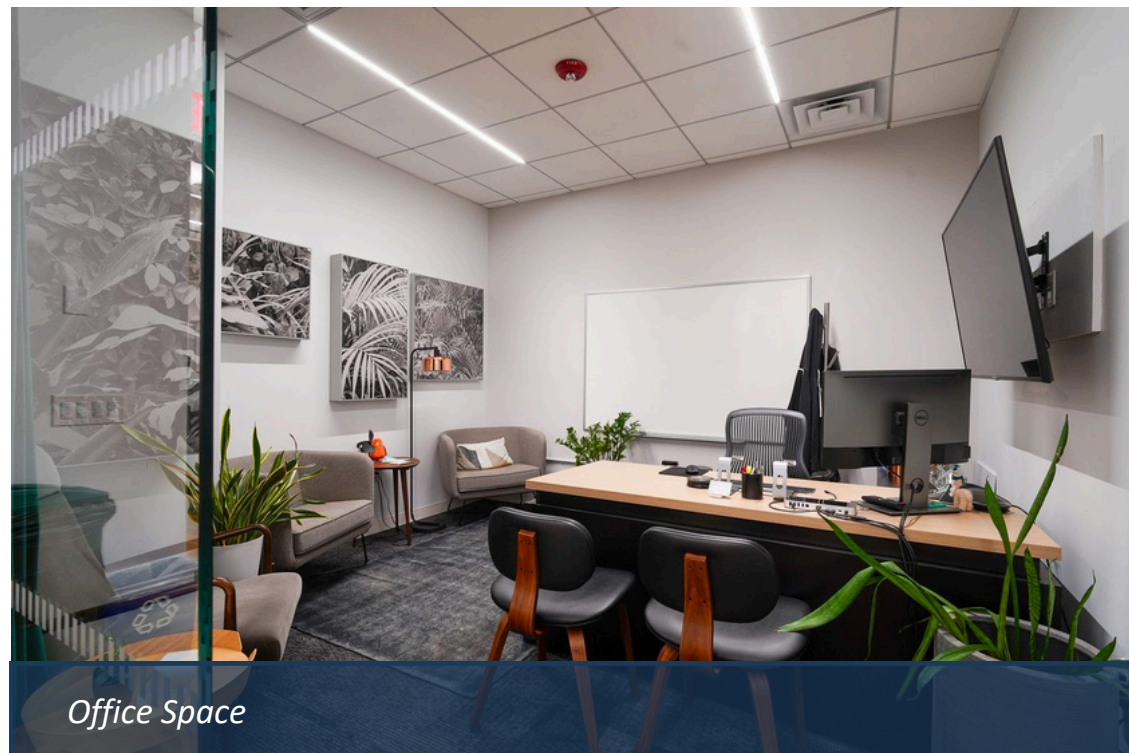
6,250 SF

Full Floor · Move-In Ready

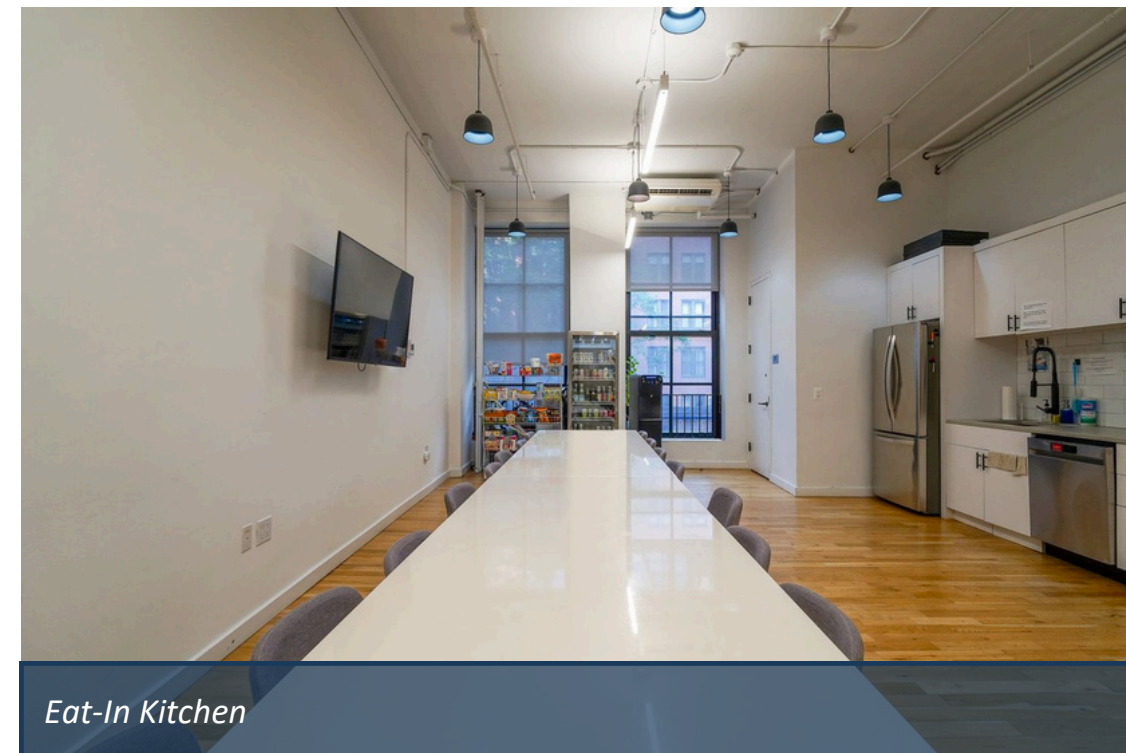
12,500 SF available · Floors can be combined



Open Workstation Area



Office Space



Eat-In Kitchen

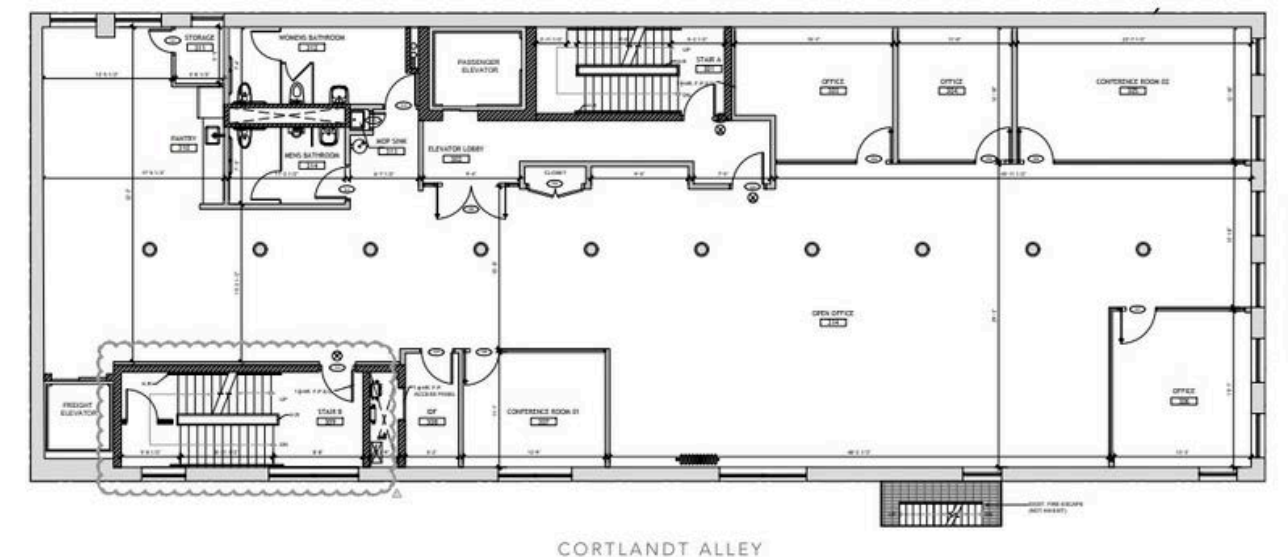
3rd Floor

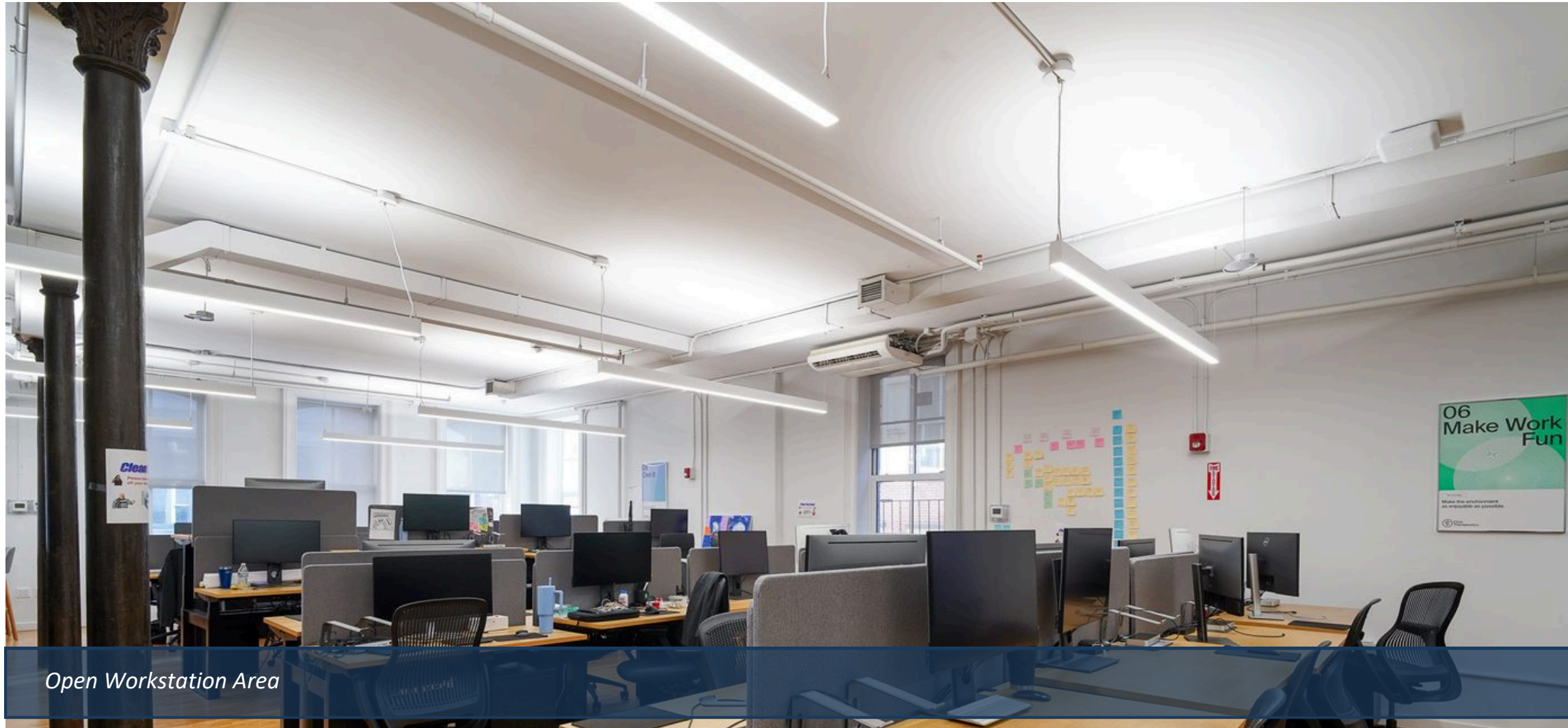
6,250 SF

HIGHLIGHTS

- Full-floor efficient layout
- 13 Feet exposed ceilings
- Abundant natural light
- Open workstation areas
- Glass-front conference rooms
- Private offices & focus rooms
- Eat-in kitchen
- Communal seating
- Hardwood floors

FLOOR PLAN





Open Workstation Area



Lounge & Breakout Area



Pantry

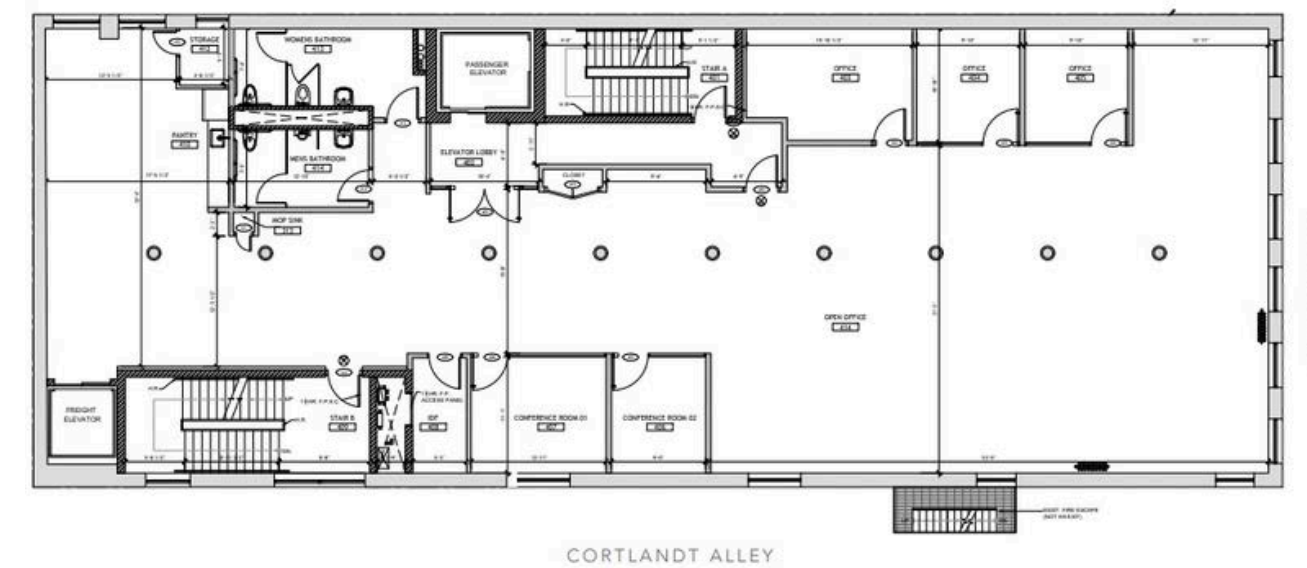
4th Floor

6,250 SF

HIGHLIGHTS

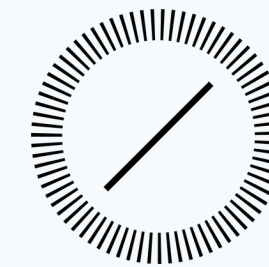
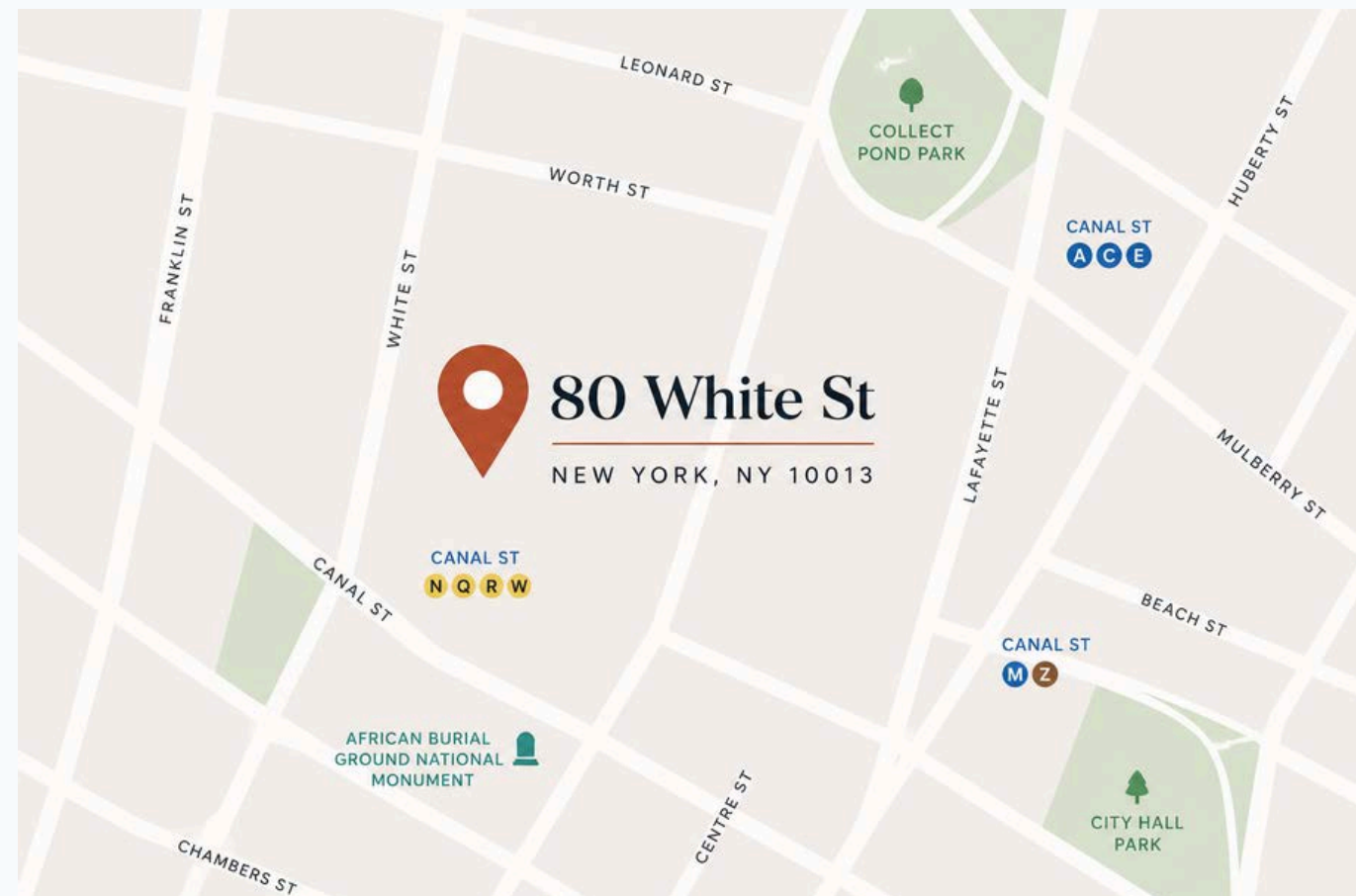
- Fully built & move-in ready
- Plug & play installation
- Large open work areas
- Mix of offices and Conference rooms
- Phone booths
- Collaboration pods
- Employee lounge
- Upgraded pantry & kitchen
- Hardwood floors
- Exposed 12 foot ceilings

FLOOR PLAN



80 White Street · TriBeCa, New York City

12,500 SF Available · 3rd & 4th Floors · Can Be Combined



Catherine O'Toole
Executive Managing Director
M: 212.961.6252
catherine.otoole@compass.com



Stephanie Moore
Executive Managing Director
M: 347.824.9872
smoore@compass.com