



187 KEARNY AVE | KEARNY, NJ 07032

EXECUTIVE SUMMARY

NAI James E. Hanson is pleased to present, on an exclusive basis, for sale 187 Kearny Ave, Kearny, NJ 07032 (the "Property") a freestanding $\pm 4,250$ SF plus basement, group home between Bergen and Wilson Avenues.

The Property features 10+ parking spaces onsite, an ADA ramp and access to the first floor. The second floor is an ideal opportunity to convert the rooming house layout to small apartment units and operate the ground floor as medical or professional office space.

The 75' wide x 100' deep lot is zoned C-3, which allows for a variety of office and retail uses and R-3 multifamily uses.

Contact Agent for pricing and private tour.

SALE PRICE \$899,000

PROPERTY SUMMARY

Address	187 Kearny Ave
Municipality	Kearny
County	Hudson
Block/Lots	32 / 37
Tax Class	15F (Other Exempt)
Zoning	C-3
UEZ	Yes
Lot Size	0.17 Acre
Real Estate Taxes	\$0 (Exempt)
Building Size (SF)	$\pm 4,250$
Parking	10+ Spaces

Jonathan M. Kristofich | Vice President
201 488 5800 x103 | jkristofich@naihanson.com

Ayush Patel | Associate
201 488 5800 x127 | apatel@naihanson.com

FOLLOW US! | Offices: Teterboro | Parsippany | Allentown • naihanson.com | naisummit.com • Member of NAI Global with 325+ Offices Worldwide

SERVICES OFFERED

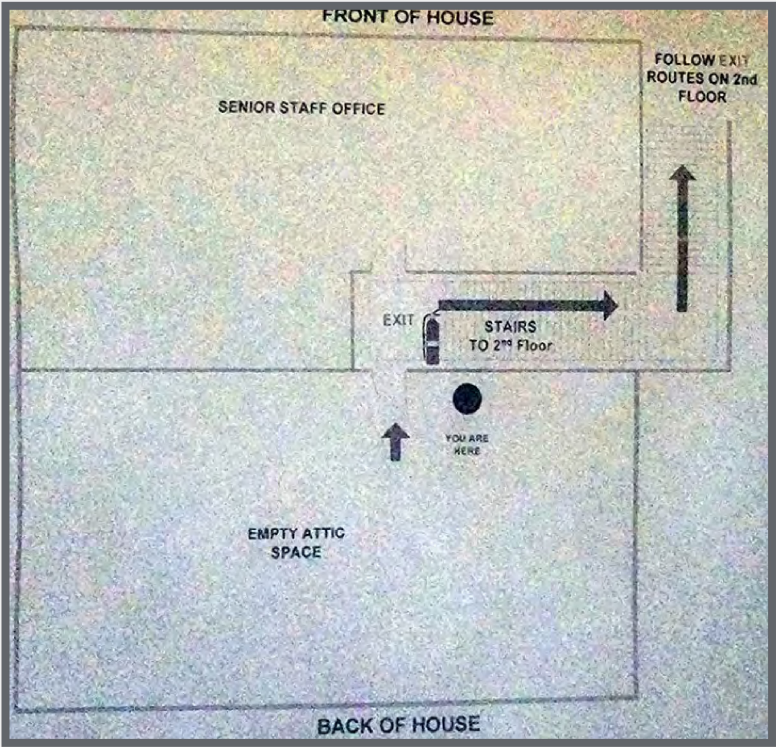
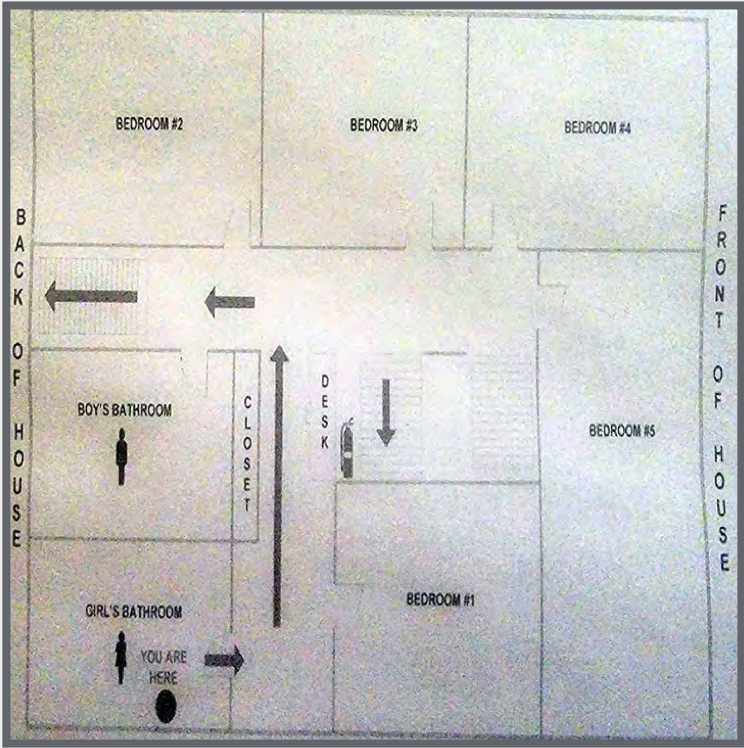
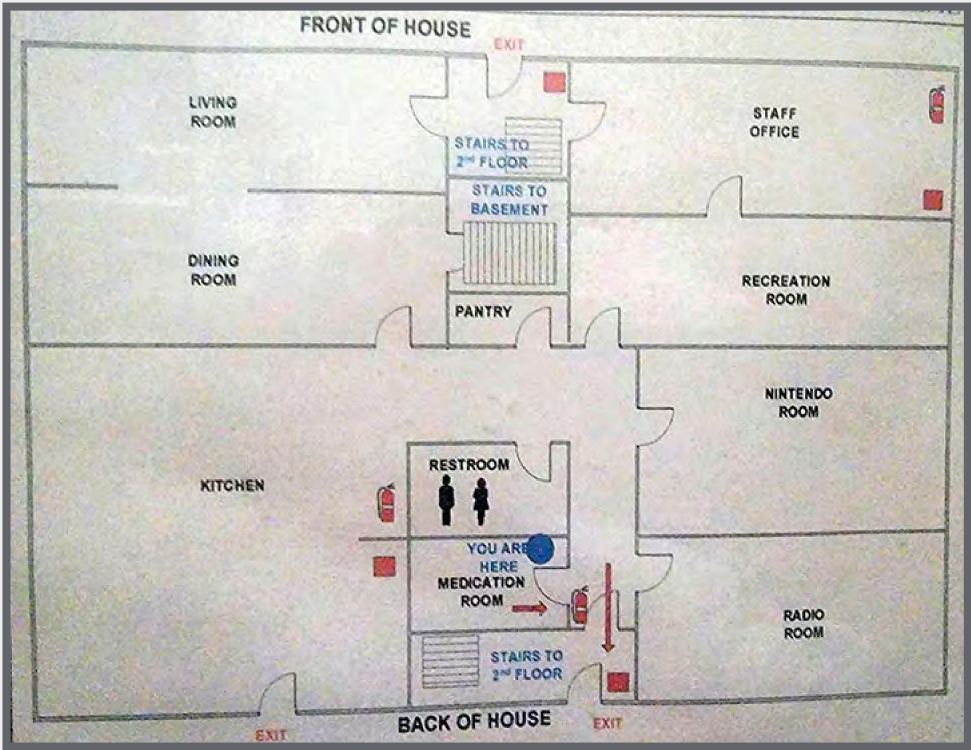
Brokerage • Property Management • Corporate Services • Financing • Tenant Representation • Cold Storage • Investment Services

THE INFORMATION CONTAINED HEREIN HAS BEEN OBTAINED FROM SOURCES CONSIDERED TO BE RELIABLE, BUT NO GUARANTEE OF ITS ACCURACY IS MADE BY NAI JAMES E. HANSON.

187 KEARNY AVE
KEARNY, NJ 07032

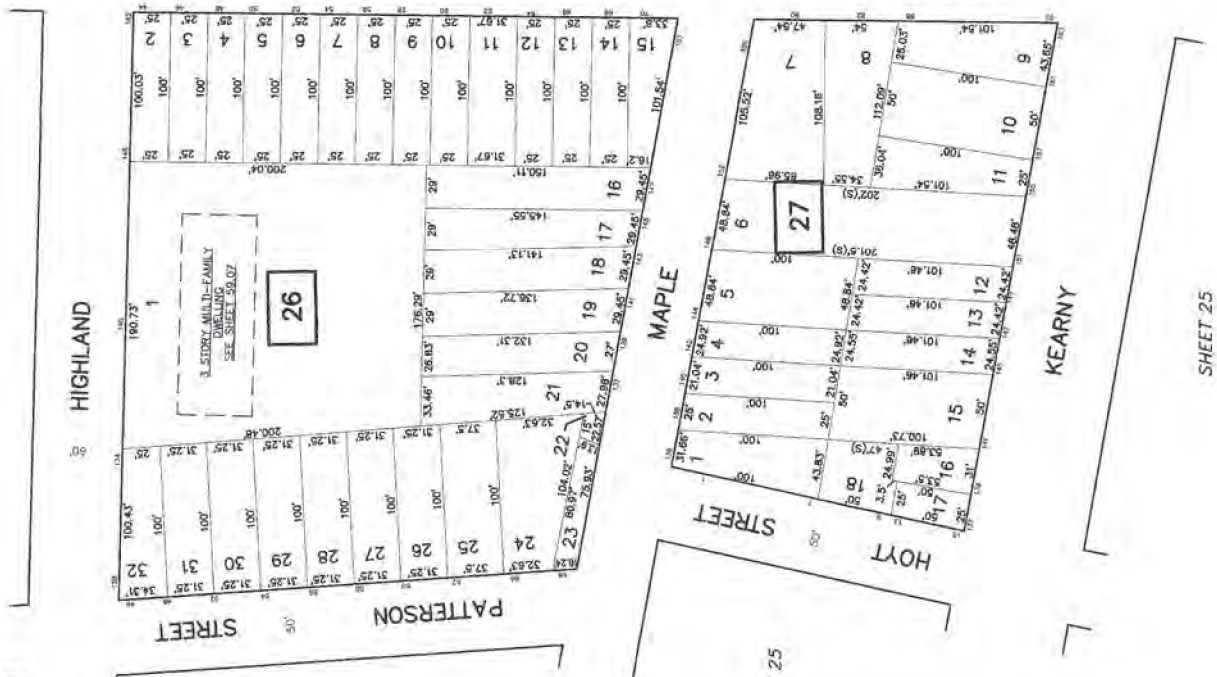
PROPERTY
PHOTOS

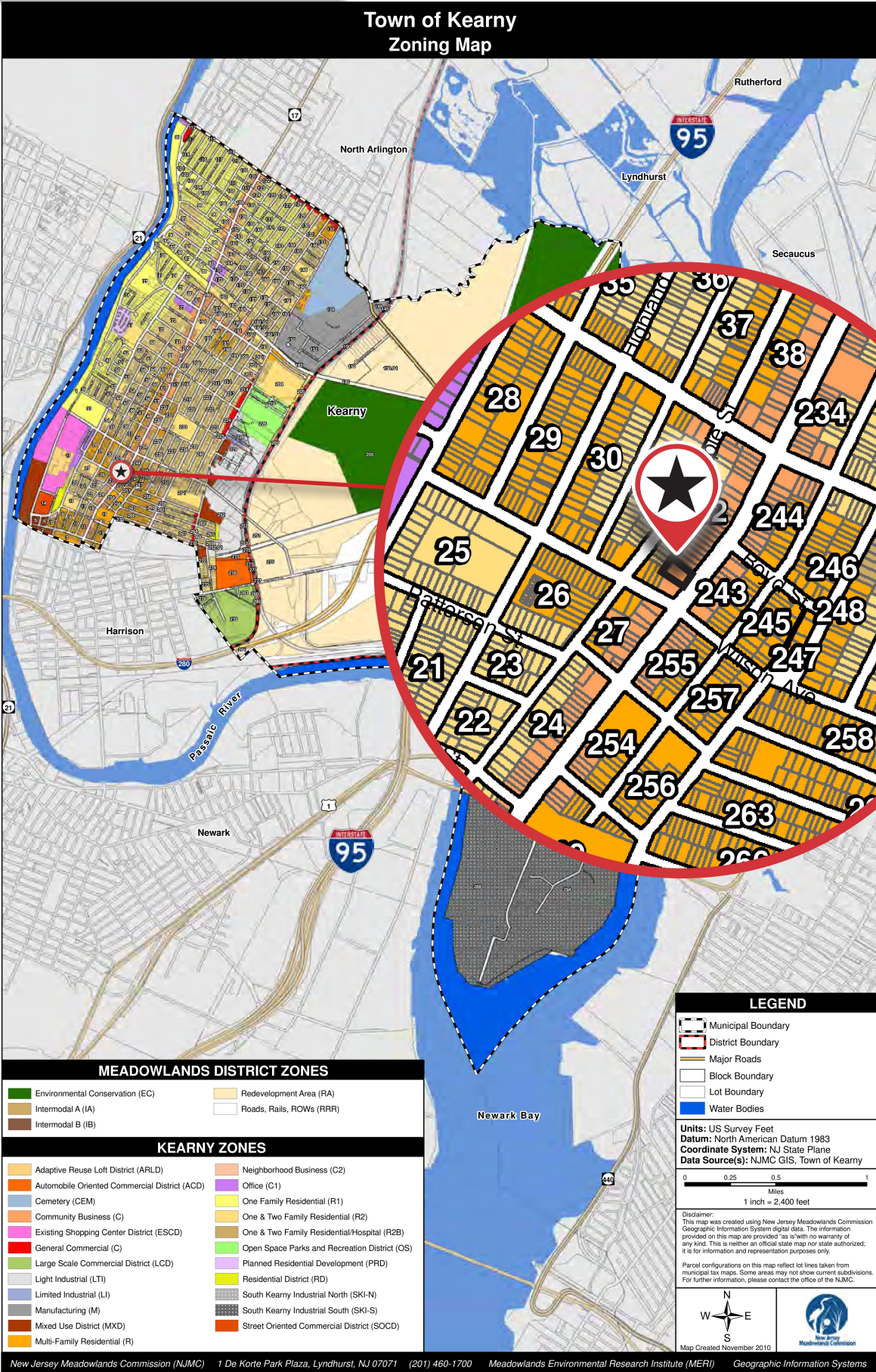




187 KEARNY AVE
KEARNY, NJ 07032

TAX
MAP





187 KEARNY AVE
KEARNY, NJ 07032

REGIONAL
MAP

