



14829 Bulverde Rd.

San Antonio, Texas 78247

**FOR SALE OR LEASE**

100% Climate Controlled  
Warehouse on Large Site



**35,700 SF Warehouse /  
5.4 Acre Yard**



## Property Information

- 35,700 SF single-user building on 7.33 Acres
  - ▶ Parcel 1: Building on 1.9 acres
  - ▶ Parcel 2: 5.4 acre yard / parking area
- +/- 6,137 SF office
- 100% climate-controlled warehouse
- 24' clear height
- ESFR sprinklers
- Concrete tilt-wall construction
- Concrete truck court
- 4 dock-high doors / 1 ramped door

## Site Plan



**For Information, Contact:**

Kevin Cosgrove, Senior Vice President | 210.298.8527

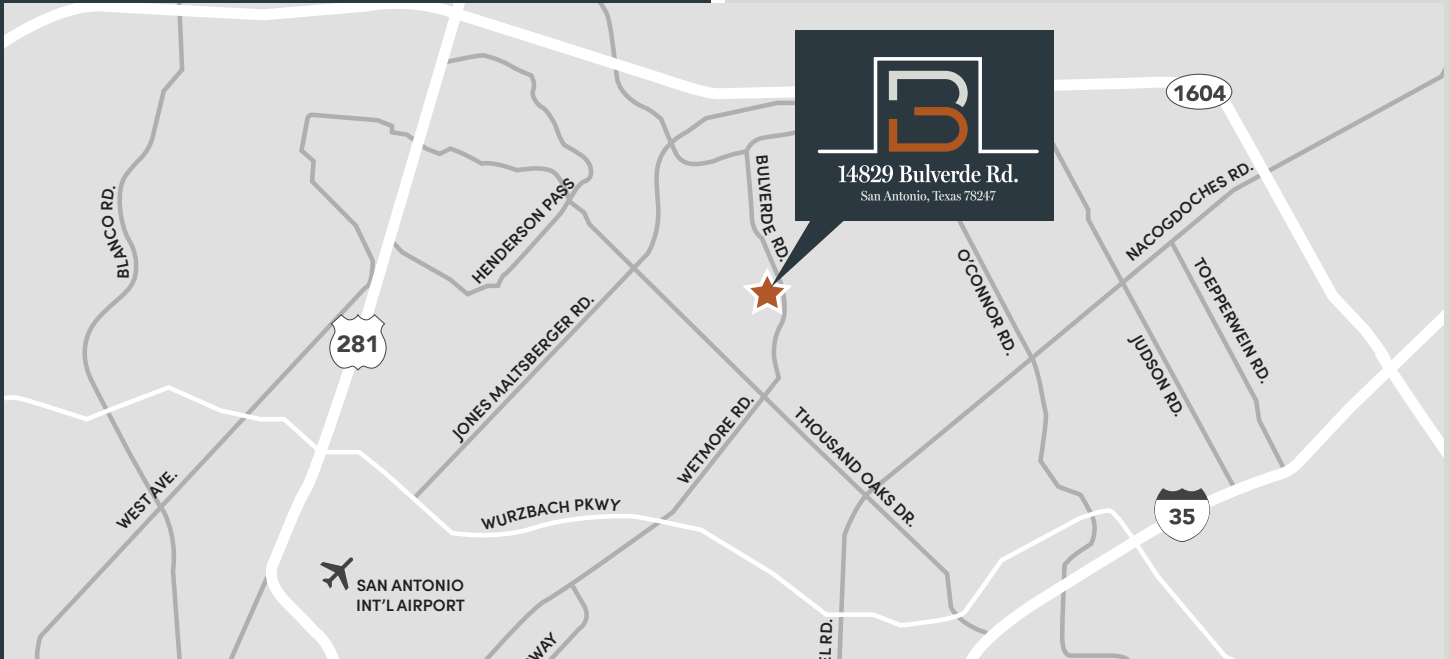
Colton Perkins, Vice President | 210.298.8533



14829 Bulverde Rd.  
San Antonio, Texas 78247

**FOR SALE OR LEASE**

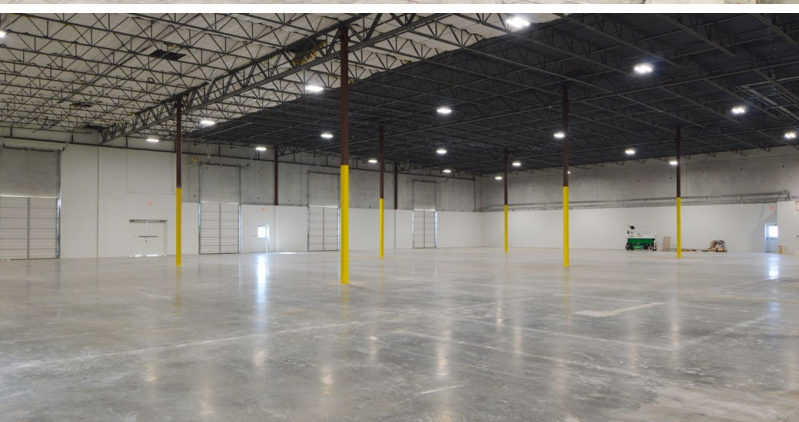
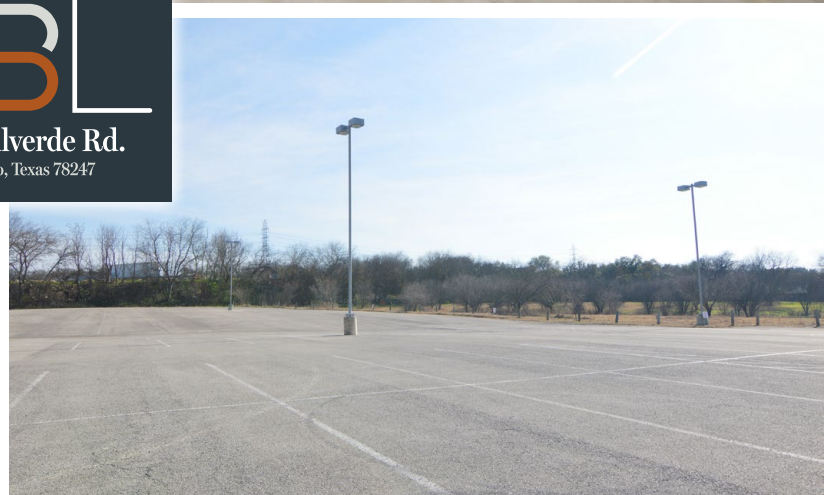
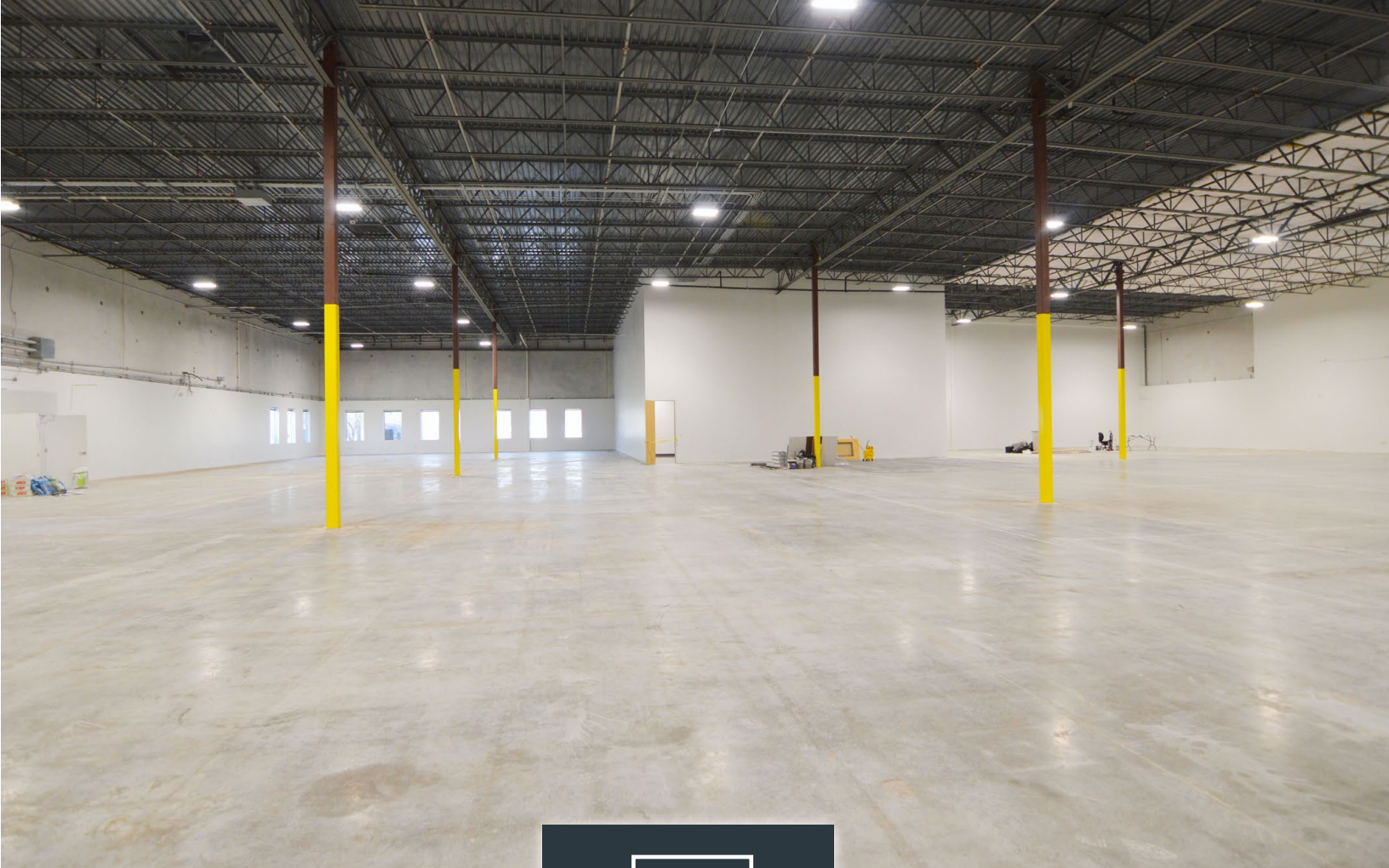
100% Climate Controlled  
Warehouse on Large Site



**For Information, Contact:**

Kevin Cosgrove, Senior Vice President | 210.298.8527  
Colton Perkins, Vice President | 210.298.8533





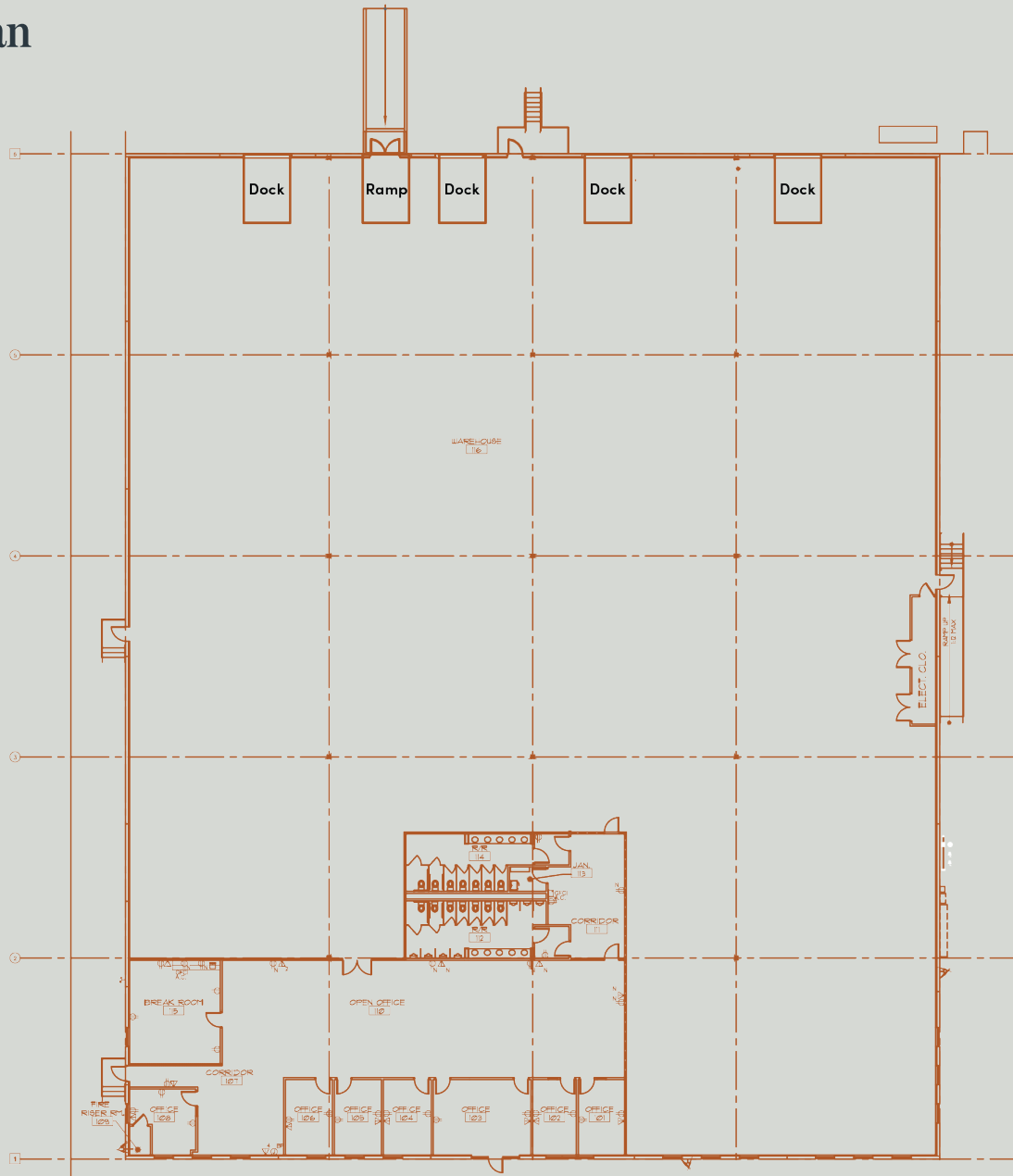
## Recently Completed Renovations



### For Information, Contact:

Kevin Cosgrove, Senior Vice President | 210.298.8527  
Colton Perkins, Vice President | 210.298.8533

# Floorplan



100% Climate Controlled  
Warehouse on Large Site



Download  
Floorplan



For Information, Contact:

Kevin Cosgrove, Senior Vice President | 210.298.8527  
Colton Perkins, Vice President | 210.298.8533