

# 21ST CENTURY PARK – BUILDING 1

1315 ROUTE 146, REXFORD, NY 12148



**CONTINUUM**  
COMMERCIAL REALTY

1 Fairchild Sq #101, Clifton Park, NY 12065 **518.321.0200**

**DEAN TAYLOR**  
LIC REAL ESTATE BROKER  
M: 518.361.0246 | O: 518.371.0200  
dtaylor@continuumcommercial.com

**RYAN TAYLOR**  
LIC REAL ESTATE BROKER  
M: 518.605.7792 | O: 518.371.0200  
rtaylor@continuumcommercial.com

# 21ST CENTURY PARK

1315 ROUTE 146, REXFORD, NY 12148

## Building 1 - Offices

11,500 SF of built offices, with private offices, breakout rooms, large meeting room, lobby, reception and kitchenette plus +/- 1000 SF of garage/storage space that can be made available. Campus-like feel and short drive to the heart of Clifton Park, Glenville and Niskayuna. Contact LBs for more info.

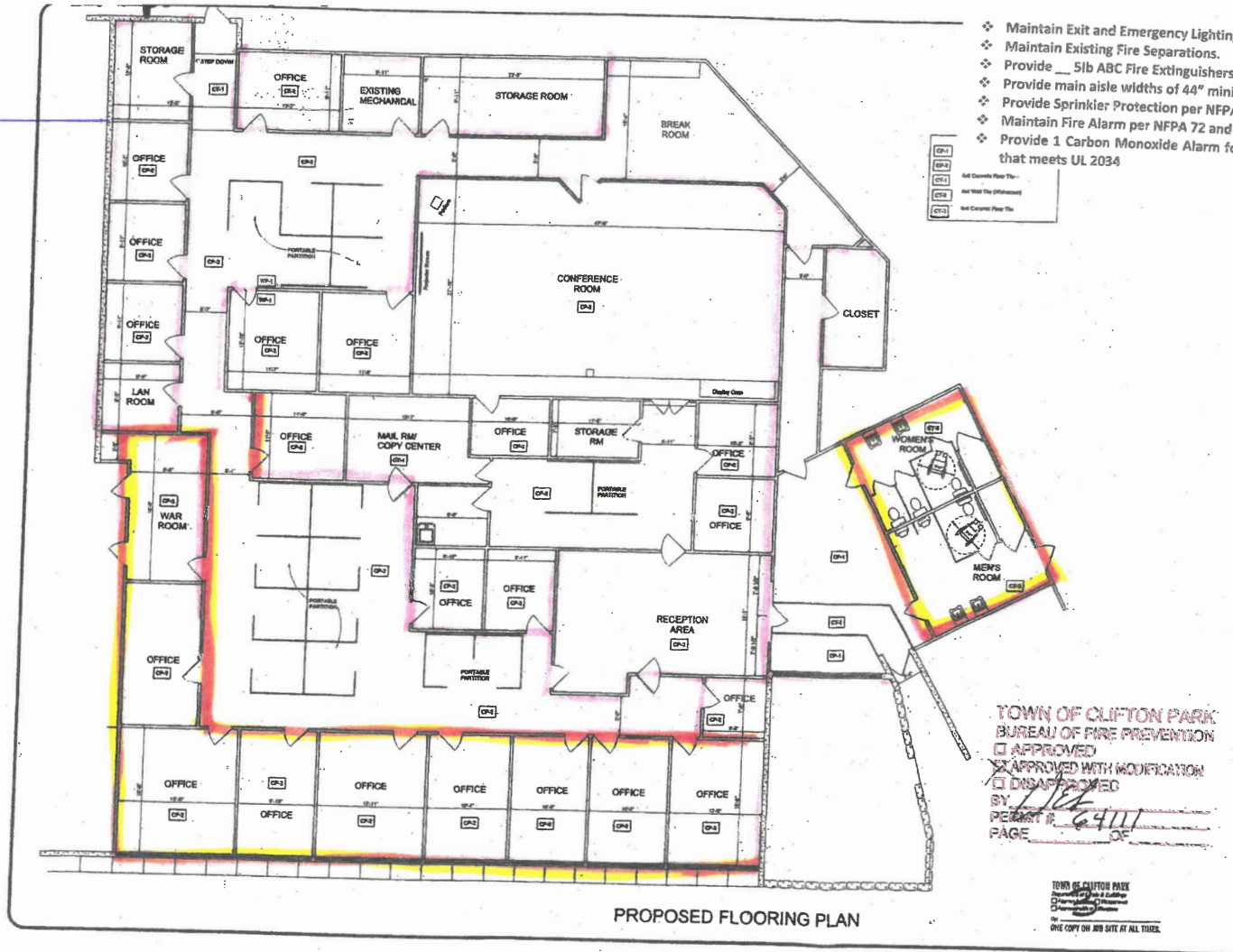
### Details:

Size	+/- 12,500 SF
Rate (Per SF)	\$9.50/SF/YR
Tenant Pays	Rent plus Utilities and Interior Janitorial

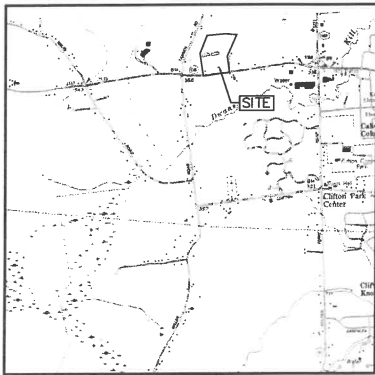


# 21ST CENTURY PARK

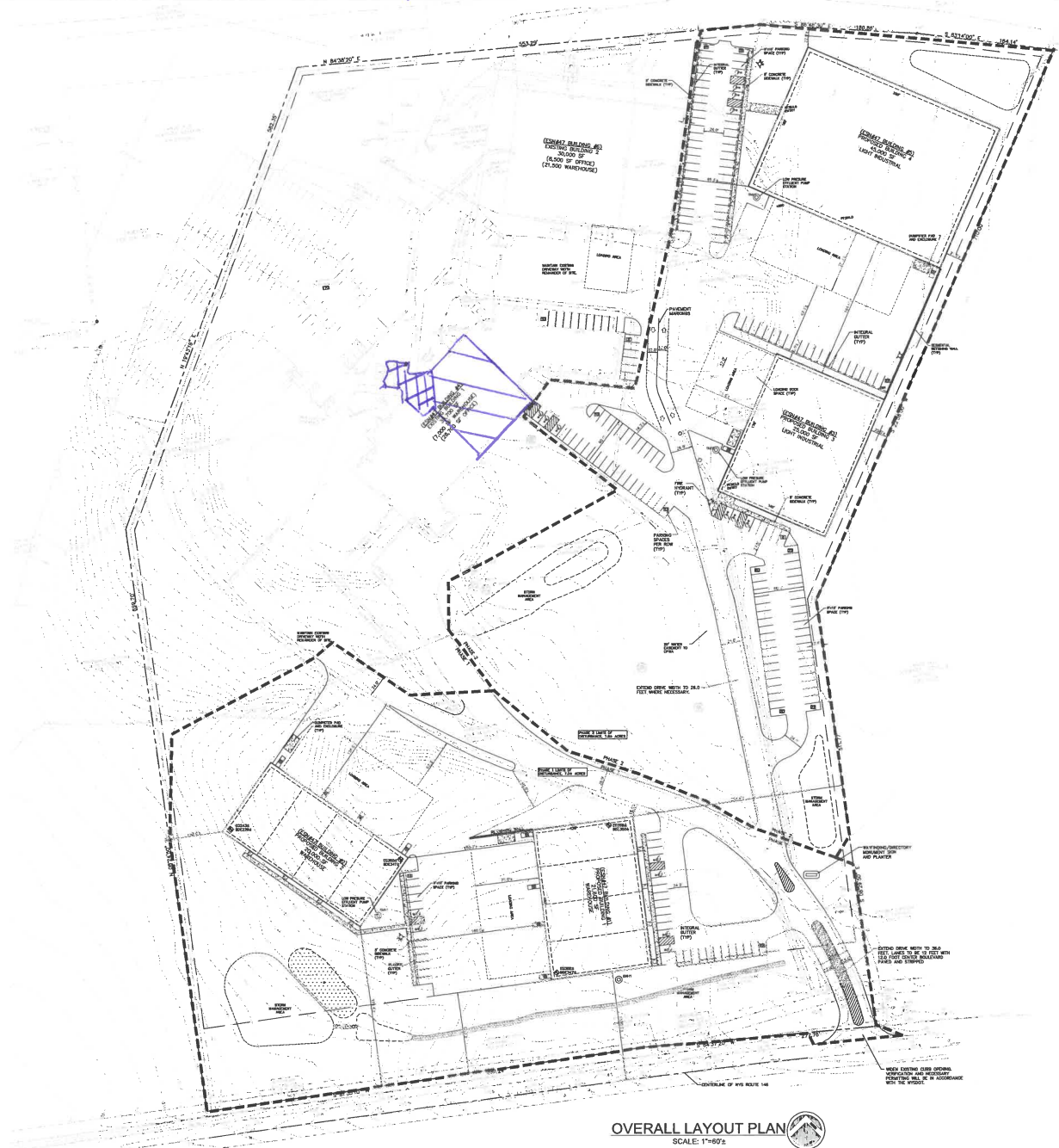
1315 ROUTE 146, REXFORD, NY 12148



/// = OFFICE AREA  
 # = STORAGE AREA W/ OH-DOOR



SITE LOCATION MAP  
 SCALE: 1"=2000'



OVERALL LAYOUT PLAN  
 SCALE: 1"=60'

ISSUED FOR REVIEW  
 NOT FOR CONSTRUCTION  
 RECORD PLANS

DATE SUBMITTED  
 JULY 2023

NO.	DATE	BY	DESCRIPTION
1	07/13/23	DA	ISSUED FOR REVIEW
2	07/13/23	DA	NOT FOR CONSTRUCTION
3	07/13/23	DA	RECORD PLANS

THE DRAWING, THE WORK OR DESIGN THEREON, OR ANY PART THEREOF, IS THE PROPERTY OF ARICO ENGINEERS & CONSULTANTS AND IS NOT TO BE REPRODUCED, COPIED, OR TRANSMITTED IN ANY FORM OR BY ANY MEANS, ELECTRONIC OR MECHANICAL, INCLUDING PHOTOCOPYING, RECORDING, OR BY ANY INFORMATION STORAGE AND RETRIEVAL SYSTEM, WITHOUT THE WRITTEN PERMISSION OF ARICO ENGINEERS & CONSULTANTS.



**ARICO ENGINEERS & CONSULTANTS**  
 1407 Route 9, Suite 200A, Clifton, New Jersey 07011  
 973.273.8888  
 aricoengineers@gmail.com

TOWN OF CLIFTON PARK COUNTY OF SARATOGA  
 OVERALL LAYOUT PLAN  
 LOCATED AT  
 21ST CENTURY PARK DRIVE  
 (AKA 1315 NYS ROUTE 148)  
 TAX MAP NO. 2762-2

DATE: FEBRUARY 2023  
 JOB NO. 2110  
 SCALE: AS NOTED  
 DRAWN BY: DPA  
 CHECKED BY: DPA

DRAWING NO.  
**50**  
 SHEET 2 OF 32