

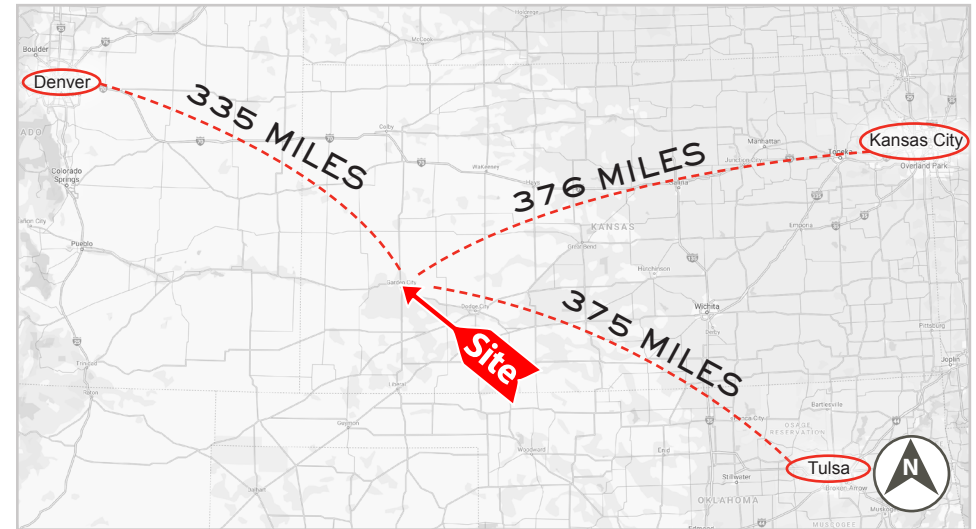
GARDEN CITY PLAZA

2310 EAST KANSAS AVENUE - GARDEN CITY, KS 67826



PROPERTY OVERVIEW

- » +/- 33,620 SF for lease adjacent to Burlington & Kohl's
- » +/- 1,100 SF with drive-thru available for lease or build-to-suit
- » +/- 0.78-acre pad for ground lease
- » 2 dedicated full-access curb cuts
- » Pylon signage available
- » Join: **Burlington KOHL'S**



DEMOGRAPHICS

Population 2023
Households 2023
Average HH Income 2023

10 MILE TRADE AREA

36,770
12,332
\$78,007

AREA RETAILERS



KENDALL GRAFF
kgraff@woodmont.com
717.371.7955

DAVID ADAMS
dadams@woodmont.com
817.219.3466

GARDEN CITY PLAZA

2310 EAST KANSAS AVENUE - GARDEN CITY, KS 67826



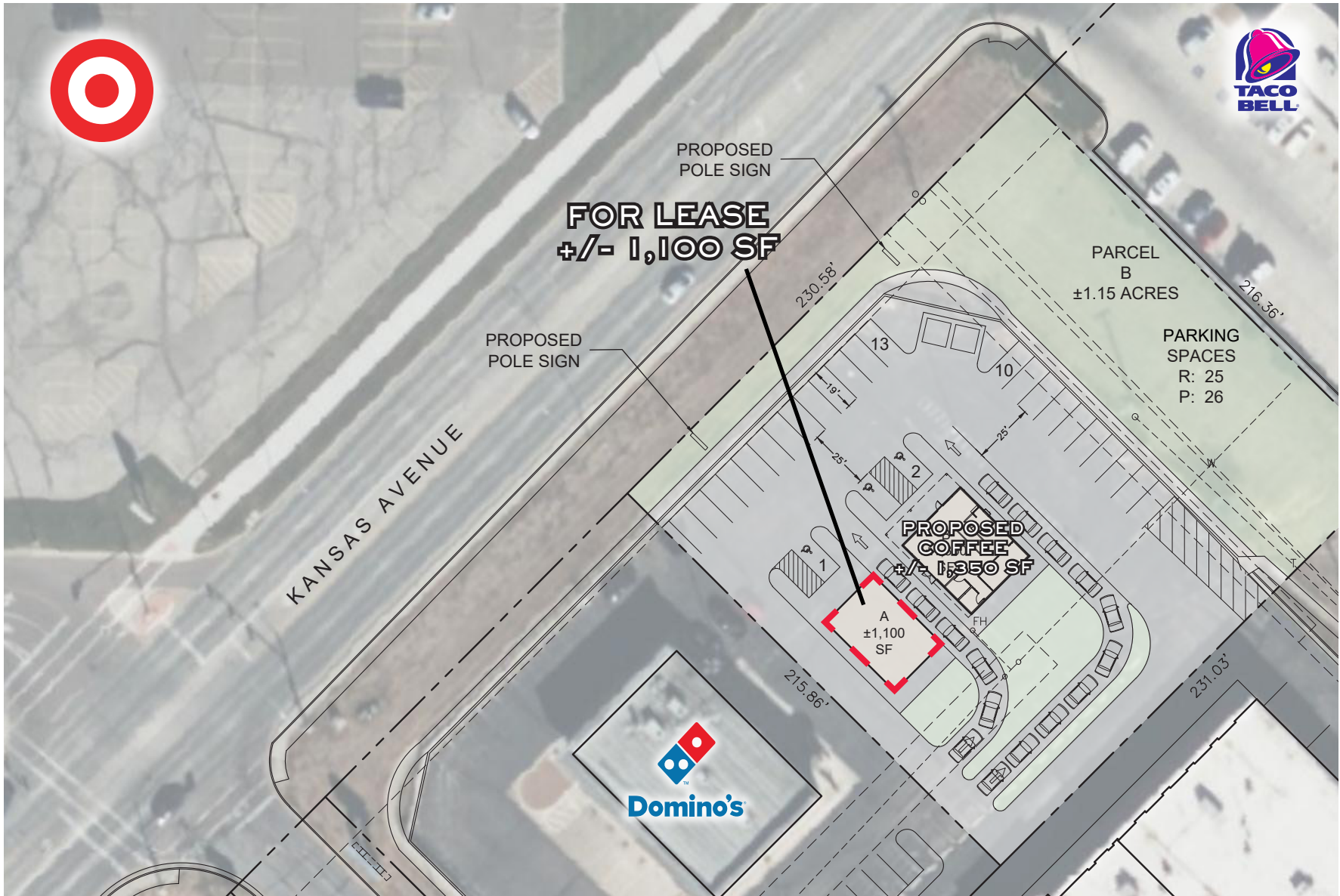
KENDALL GRAFF
kgraff@woodmont.com
717.371.7955

DAVID ADAMS
dadams@woodmont.com
817.219.3466



GARDEN CITY PLAZA

2310 EAST KANSAS AVENUE - GARDEN CITY, KS 67826



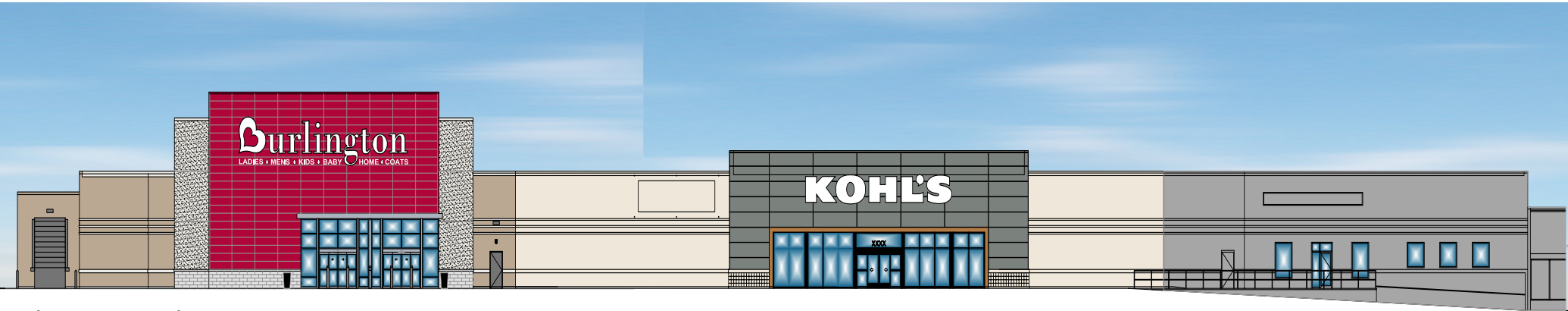
KENDALL GRAFF
kgraff@woodmont.com
717.371.7955

DAVID ADAMS
dadams@woodmont.com
817.219.3466

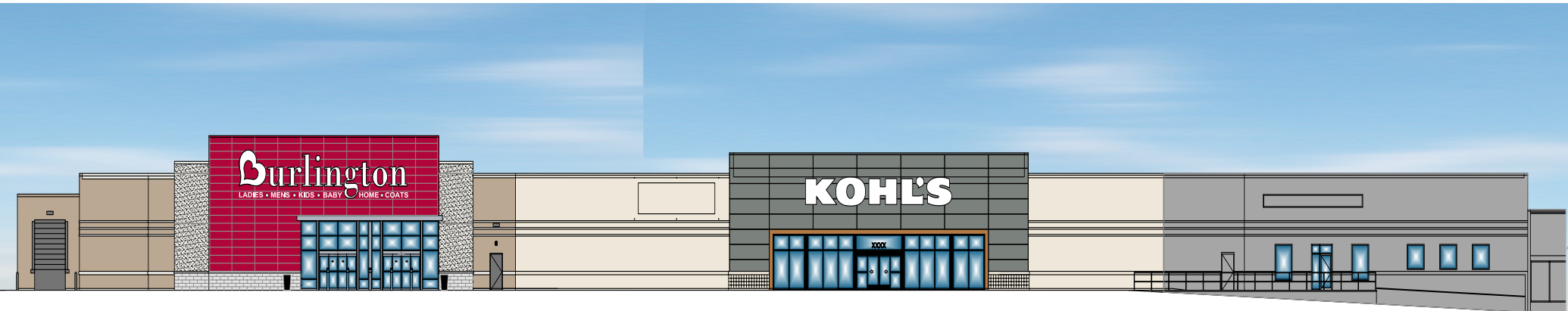


GARDEN CITY PLAZA

2310 EAST KANSAS AVENUE - GARDEN CITY, KS 67826



FRONT ELEVATION - current



FRONT ELEVATION - proposed



KENDALL GRAFF
kgraff@woodmont.com
717.371.7955

DAVID ADAMS
dadams@woodmont.com
817.219.3466

GARDEN CITY PLAZA

2310 EAST KANSAS AVENUE - GARDEN CITY, KS 67826



GARDEN CITY PLAZA

HIBBETT SPORTS | GameStop | SALLY BEAUTY
maurices | Famous Footwear | RBC
claire's | GNC | KFC
Advance! Auto Parts | Davita Kidney Care | Domino's
KOHL'S Burlington

SCHULMAN CROSSING SHOPPING CENTER

OLD NAVY | ULTA BEAUTY
five BELOW | DICK'S SPORTING GOODS
ROSS | PETCO
TJ-maxx | CATO
Buckle | HOBBY LOBBY

GARDEN CITY COMMUNITY COLLEGE



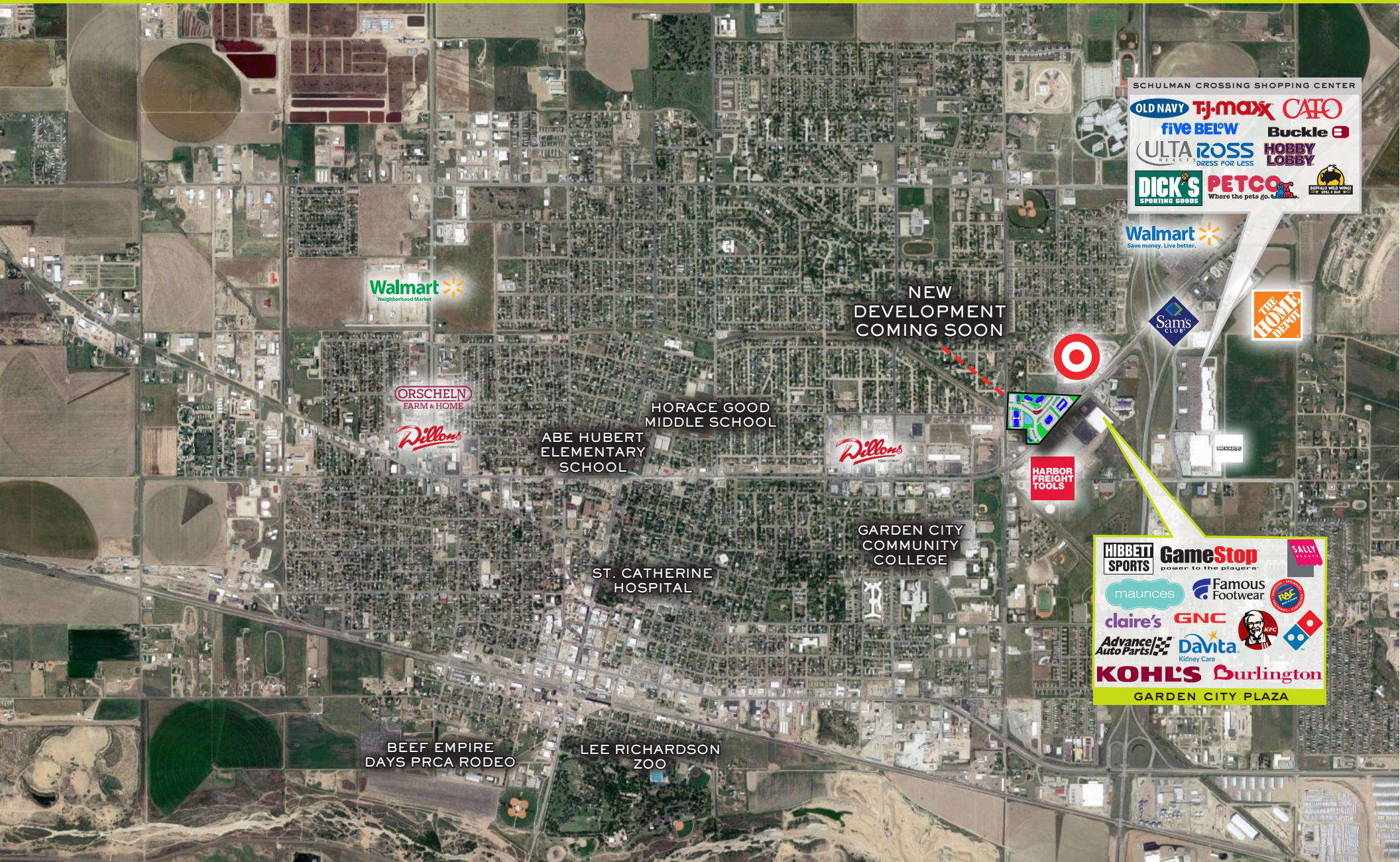
KENDALL GRAFF
kgraff@woodmont.com
717.371.7955

DAVID ADAMS
dadams@woodmont.com
817.219.3466



GARDEN CITY PLAZA

2310 EAST KANSAS AVENUE - GARDEN CITY, KS 67826



KENDALL GRAFF
kgraff@woodmont.com
717.371.7955

DAVID ADAMS
dadams@woodmont.com
817.219.3466



GARDEN CITY PLAZA

2310 EAST KANSAS AVENUE - GARDEN CITY, KS 67826



KENDALL GRAFF
kgraff@woodmont.com
717.371.7955

DAVID ADAMS
dadams@woodmont.com
817.219.3466