

WINDSONG OFFICE PARK

South Lamar's Walkable Garden Office Park

Private Offices - Suite 12

Available Immediately

The suite consists of 3 spacious picture windowed offices, reception/waiting area, private bathroom and work/break-room. High speed fiber optics available through Google. Under-counter refrigerator and microwave provided.

Square Footage 898 SF

Rate per SF **\$21.00 NNN**

OpEx \$14.56 + E & J

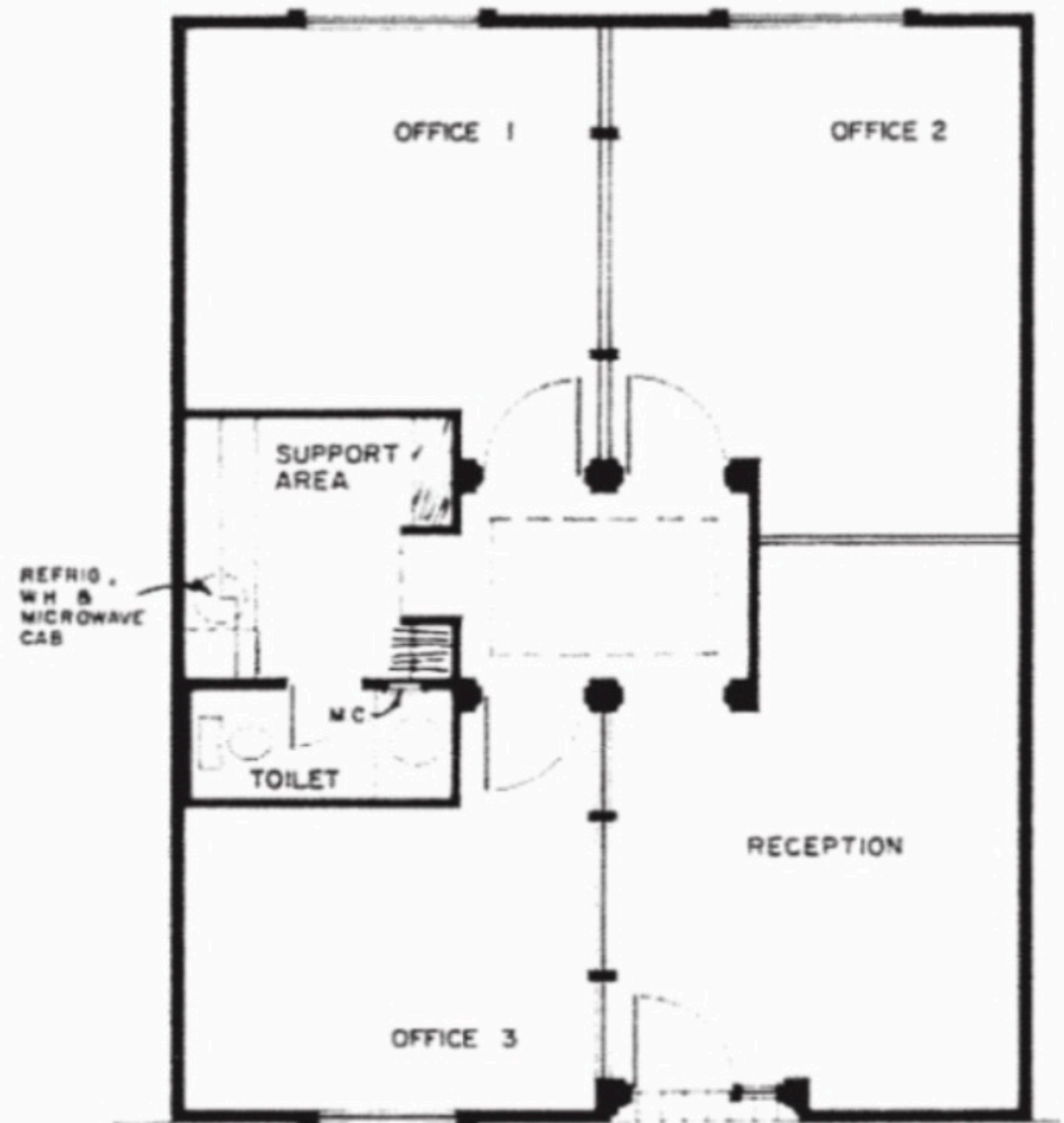
Monthly Rent \$2,698 + E & J

Term 5 years

Condition Full Build-Out

Timing May 1, 2026

Parking 4 per 1,000 SF



JOHN HANLY
Owner

Cell: 512.203.5608

john@windsongofficepark.com