

COMMERCIAL PROPERTY FOR LEASE

DTLA Fashion District Retail Space

1,800± SF End Unit Available



1212 WALL STREET, LOS ANGELES, CA 90015

- 1,800± SF retail/wholesale unit available for lease
- Completely refurbished — Clean and sharp — Must see!
- Located between Pico Blvd and 12th Street
- Excellent signage with heavy traffic exposure
- Close to San Pedro Mart, Santee Alley and LA FACE Mart
- Includes secure, gated rear parking for one vehicle per unit
- Zoned LA M2 — Built in 1924
- Lease rental: \$2,200 per month (\$1.22 per SF MG)

For More Information, Please Contact:

SION KHAKSHOUR

(213) 210-7492

sion@majorproperties.com

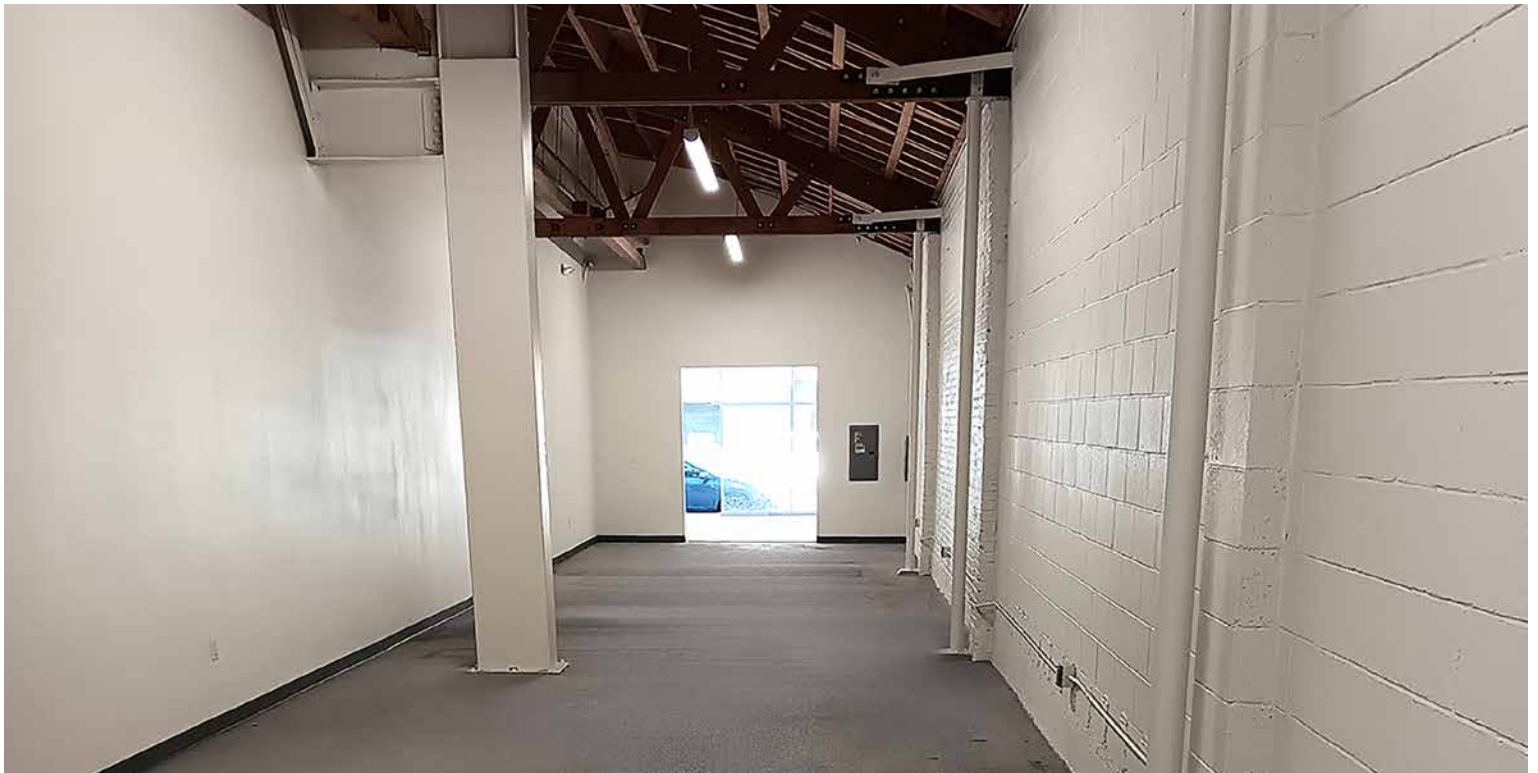
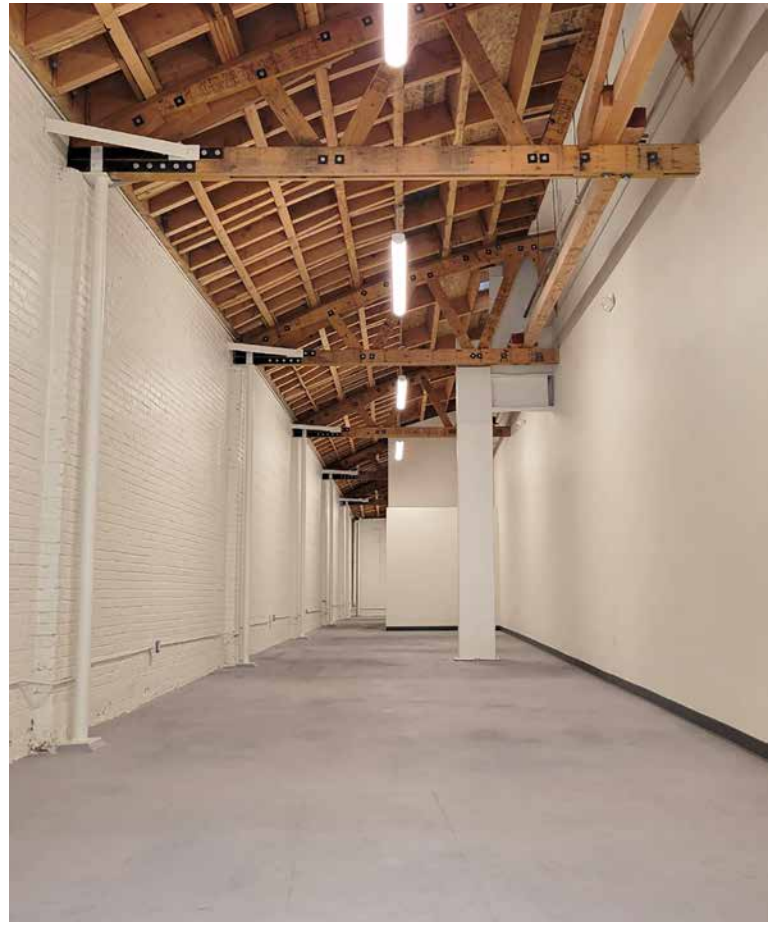
LIC. 00697373

The information contained herein is furnished by sources we deem reliable, but for which we assume no liability. It is given in confidence and with the understanding that all negotiations pertaining to the property be handled through the listing office. All measurements are approximate.

COMMERCIAL PROPERTY FOR LEASE



COMMERCIAL PROPERTY FOR LEASE



COMMERCIAL PROPERTY FOR LEASE

