



Montgomery Parkway

Office, Medical & Executive Suites

Albuquerque, NM - Far NE Heights
10401 & 10409 Montgomery Parkway NE



Demographics

1 Mile

3 mile

5 mile

	1 Mile	3 mile	5 mile
Population	13,364	140,998	319,333
Med. Income	\$43,826	\$39,499	\$41,743
Day Population	15,902	106,814	251,027

Please contact us for leasing opportunities



Available

10401 Montgomery Parkway

- Suite 1X+1Y | 770 SF \$425/Mo
- Food Truck Parking

10409 Montgomery Parkway

- Suite 203D | 125 SF \$175/Month



Surroundings Info

- In a well established area.
- Great street appearance with prominent signs.
- Several restaurants and pubs nearby.
- Secured building entry & exit.
- Locally owned and managed.
- Long term, successful cotenants.



Contact

Brighton Pope
 505.884.3578
 Brighton.Pope@PetersonProperties.net

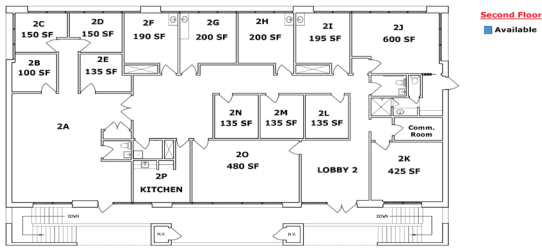
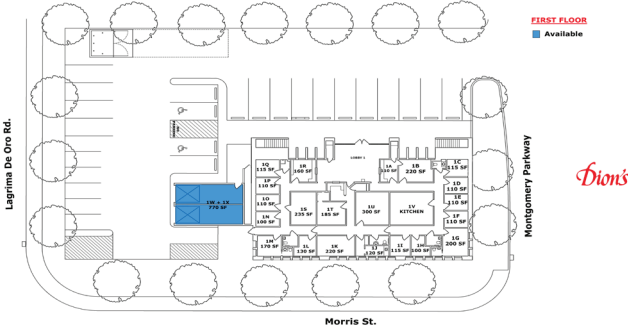
PetersonProperties.net

/petersonpropertiesllc

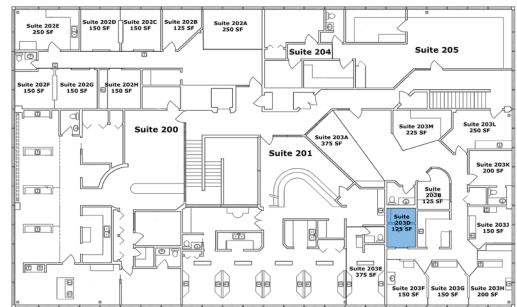
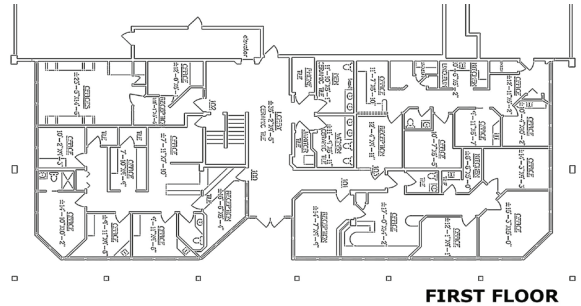
/petersonpropertiesllc

/peterson.properties

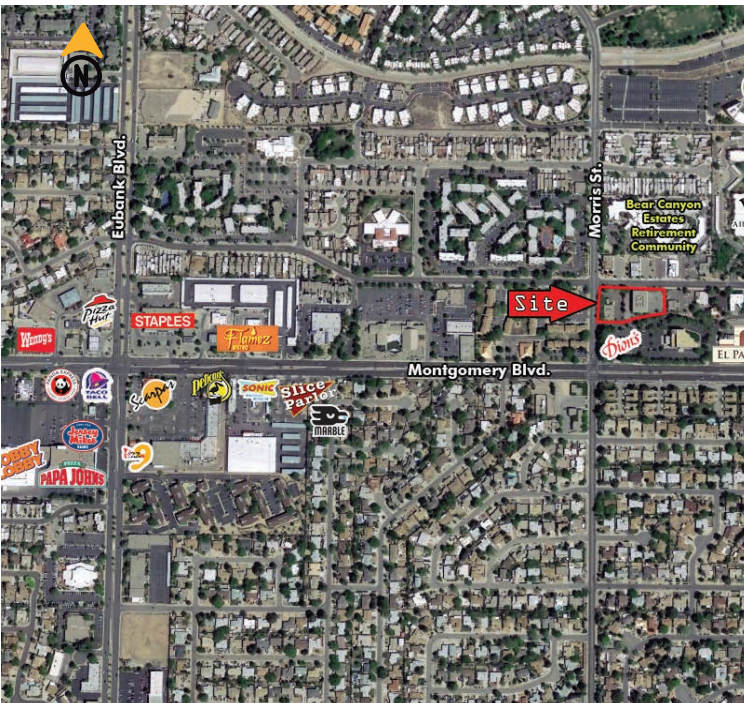
10401 Montgomery



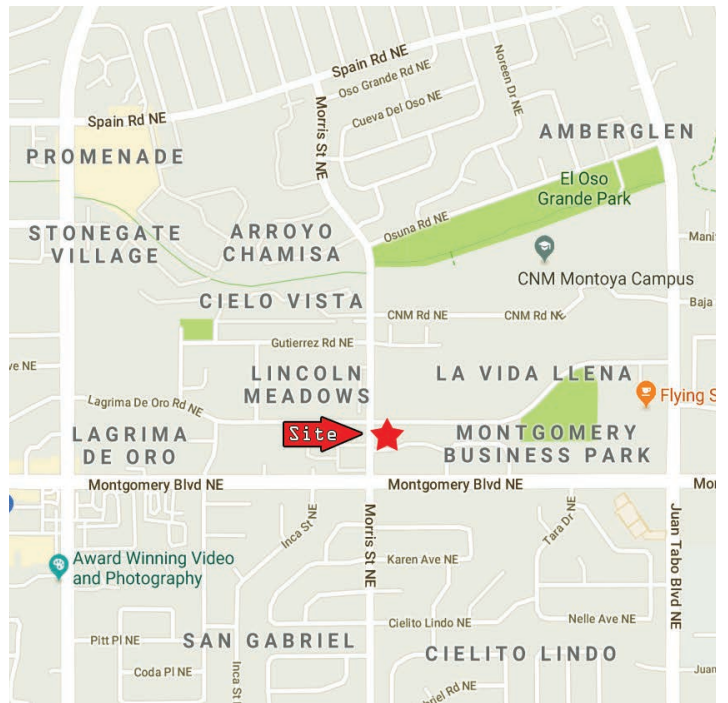
10409 Montgomery



Aerial Map



10401 & 10409 Montgomery Parkway NE, Albuquerque NM



Contact us

Brighton Pope | 505.884.3578 | Brighton.Pope@PetersonProperties.net

