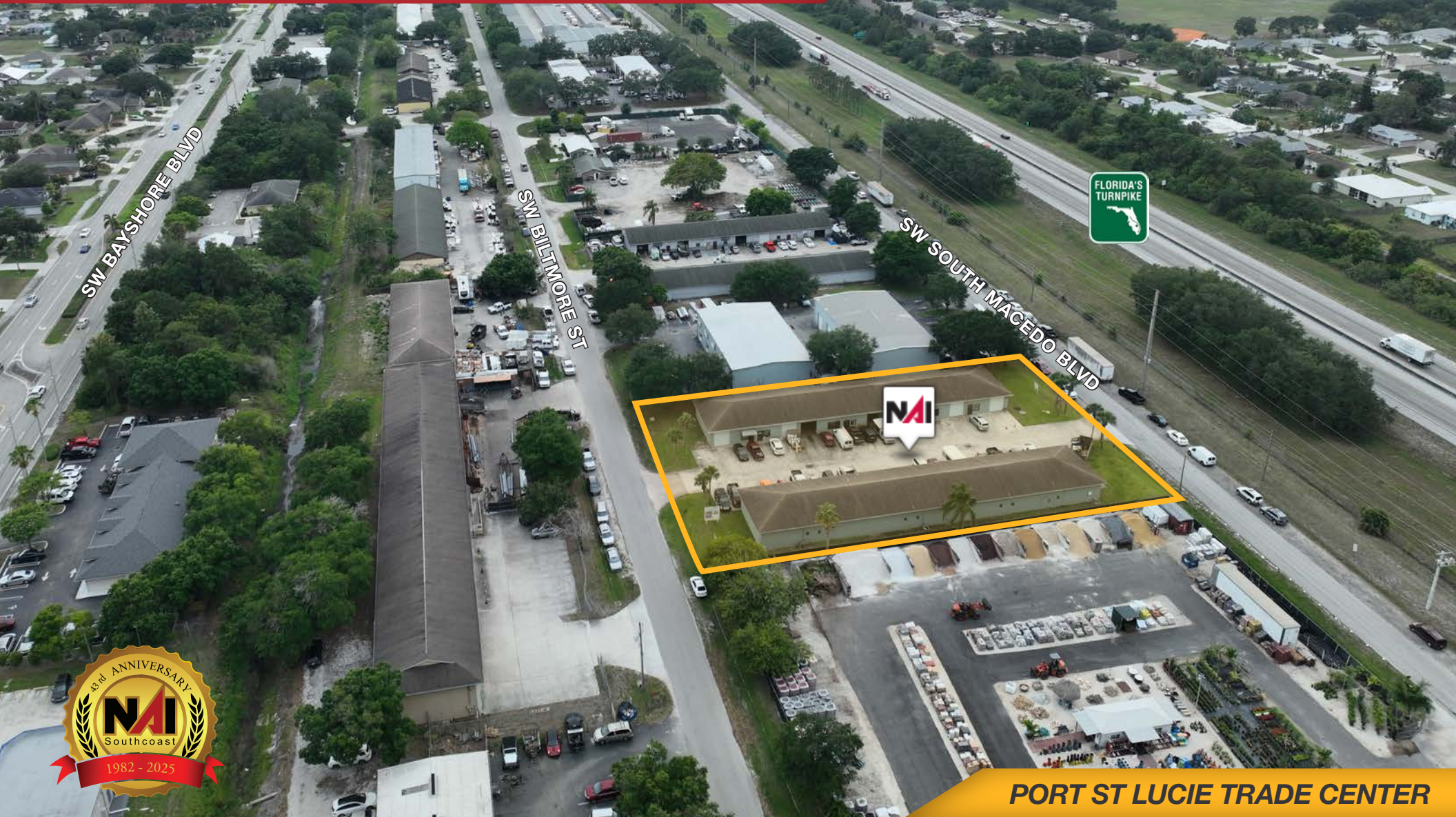


1,000 SF Industrial Flex Units

1726 SW Biltmore St, Port St Lucie, FL 34984

NAI Southcoast



PORT ST LUCIE TRADE CENTER

Presented by

Nikolaus M. Schroth, CCIM

Principal | Broker Associate

+1 772 286 6292

nikschrroth@naisouthcoast.com

www.naisouthcoast.com

J. Jeffery Allman, Jr.

Principal | Broker Associate

+1 772 286 6292 c +1 772 283 1555

jeff@naisouthcoast.com

www.naisouthcoast.com

James McKinney

Sales Associate

+1 772 349 3414

jamesmckinney@naisouthcoast.com

www.naisouthcoast.com

FOR LEASE:

\$1,600/Month Gross

1,000 SF Industrial Flex Units

1726 SW Biltmore St, Port St Lucie, FL 34984

Property Details

Location: 1726 SW Biltmore St, Port St Lucie, FL 34984

Available Units: Unit 1720 - 1,000 SF

Pricing: Unit 1720 - \$1,600/month Gross

Grade Level Door: 10' x 10'

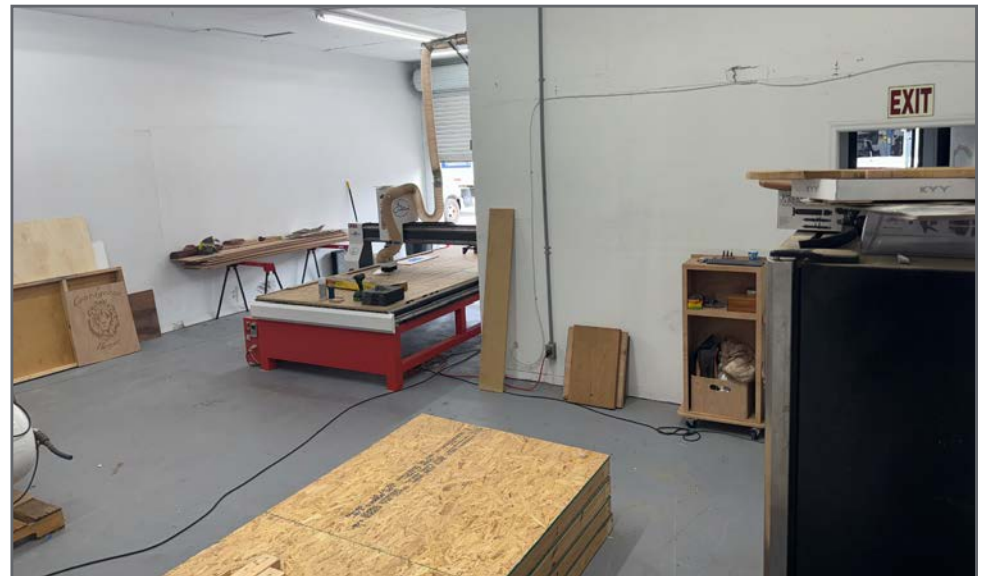
Zoning: Service Commercial

Property Overview

Excellent small bay industrial flex building located just off of SW Biltmore Street with Crosstown Parkway to your north and Port St Lucie Boulevard to your south.

Units are currently office space but could be converted back to warehouse space with 10' x 10' grade level roll-up door. The building is constructed with concrete block.

Quick access to Florida Turnpike is available at the intersection of SW Port St. Lucie Boulevard and Interstate 95 you can conveniently cover the surrounding market area.



1,000 SF Industrial Flex Units

1726 SW Biltmore St, Port St Lucie, FL 34984

Looking West



1,000 SF Industrial Flex Units

1726 SW Biltmore St, Port St Lucie, FL 34984

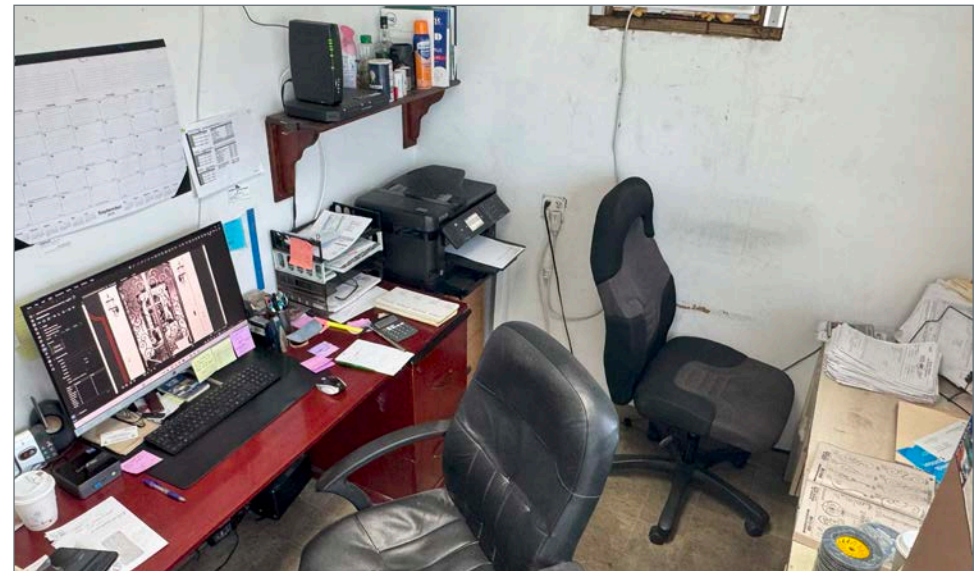
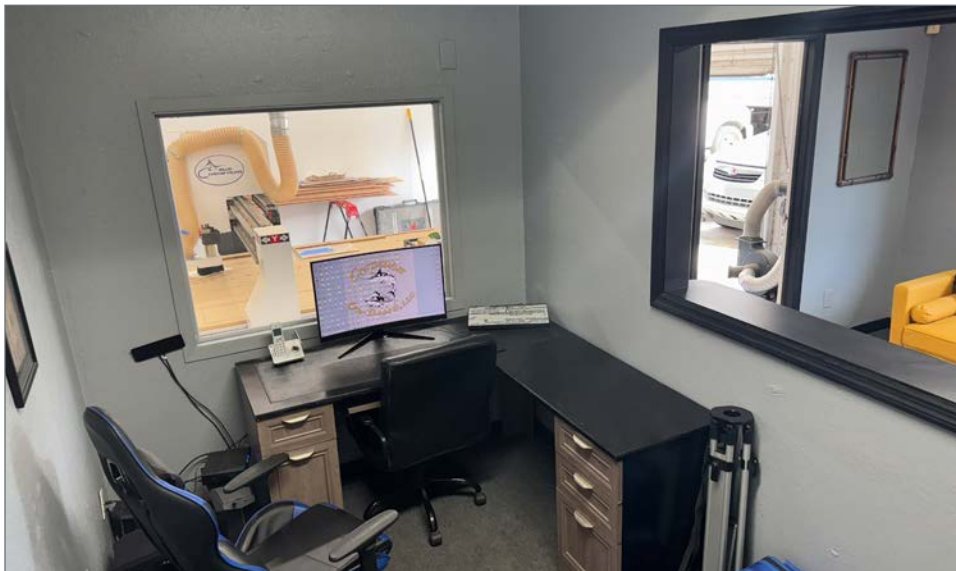
Exterior



1,000 SF Industrial Flex Units

1726 SW Biltmore St, Port St Lucie, FL 34984

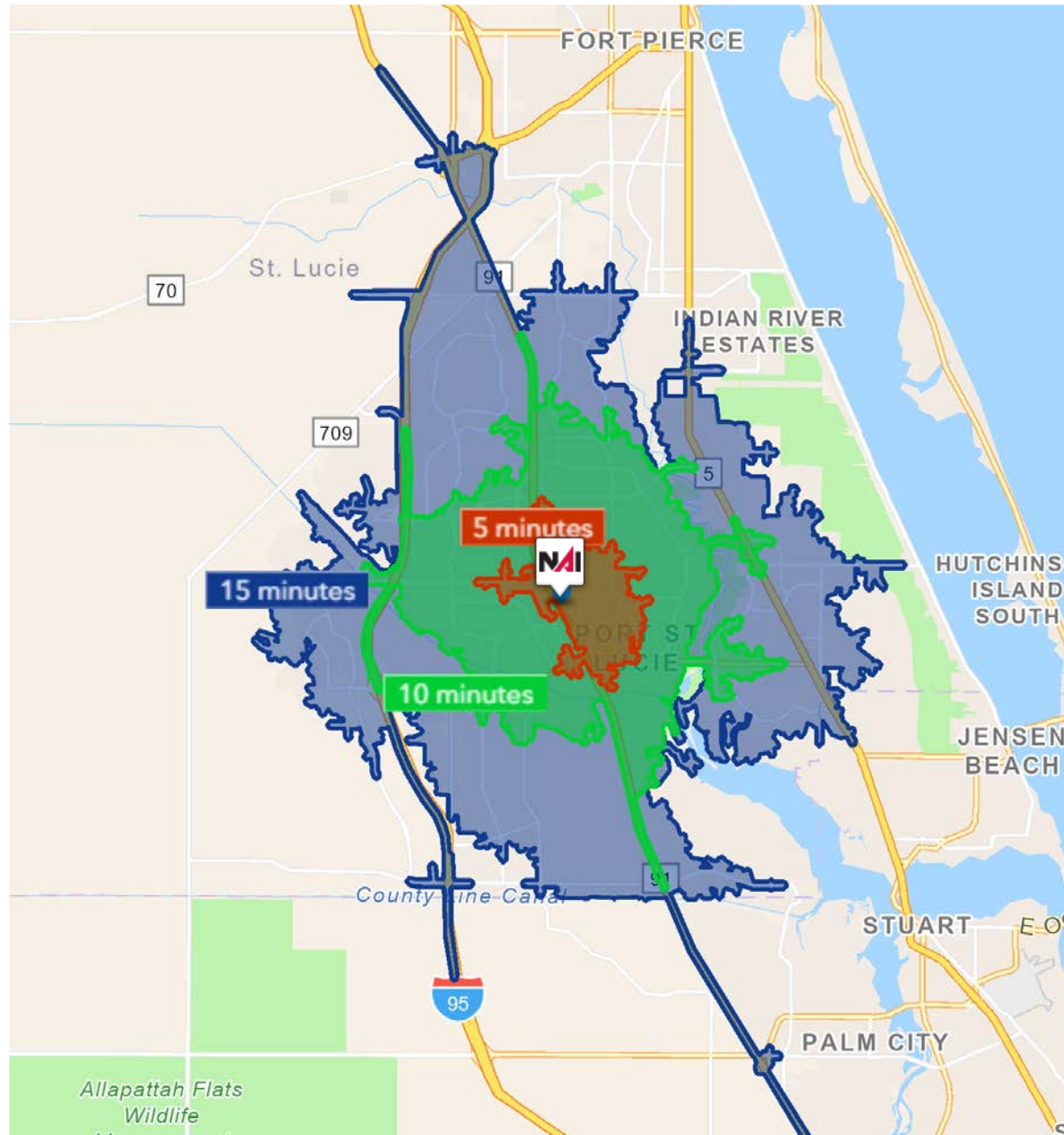
Unit 1720



1,000 SF Industrial Flex Units

1726 SW Biltmore St, Port St Lucie, FL 34984

Drive Time

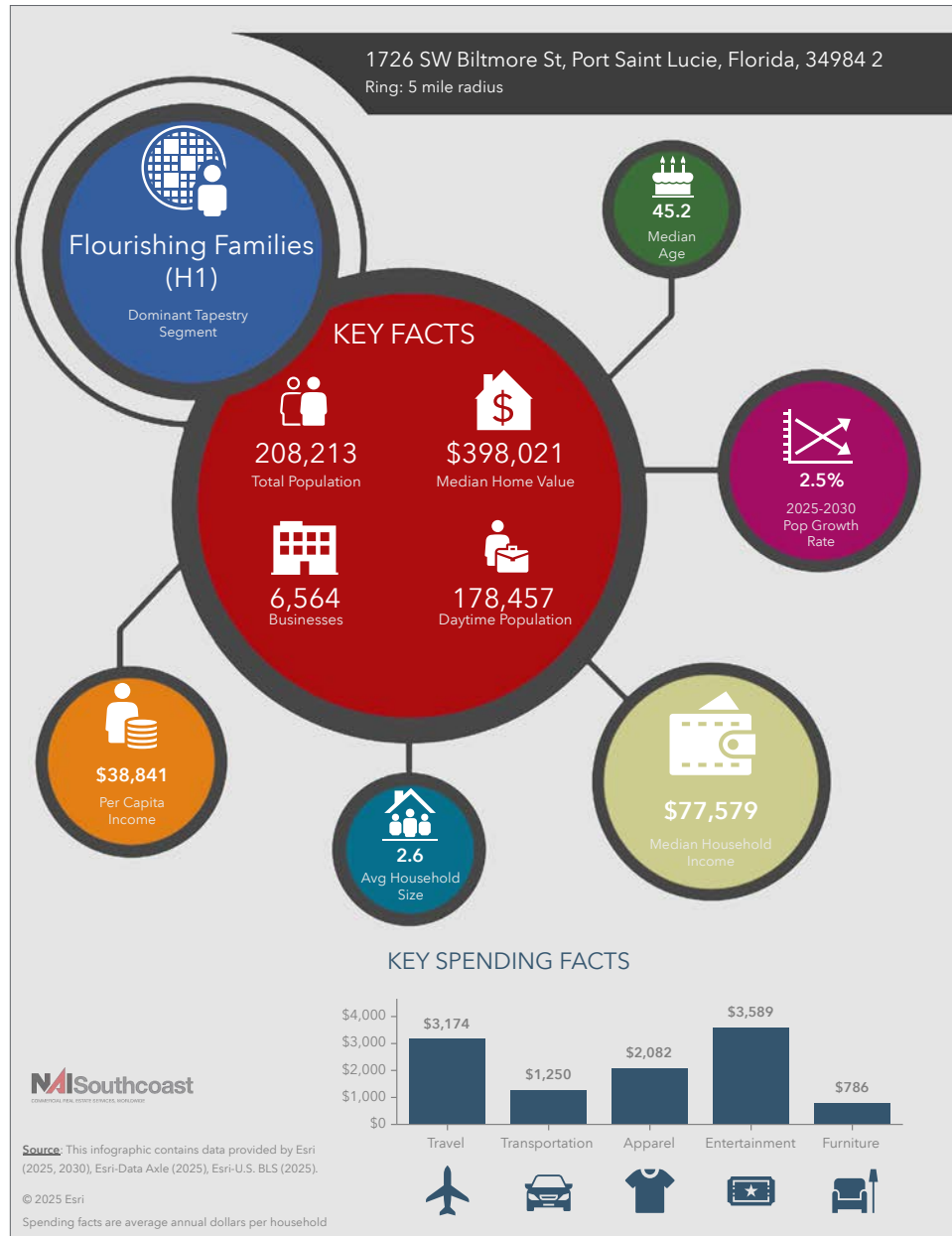


5 Minutes	10 Minutes	15 Minutes
11,964 2010 Population	76,226 2010 Population	161,709 2010 Population
15,101 2025 Population	94,914 2025 Population	219,960 2025 Population
26.2% 2010-2025 Population Growth	24.5% 2010-2025 Population Growth	36.0% 2010-2025 Population Growth
1.60% 2025-2030 (Annual) Est. Population Growth	1.33% 2025-2030 (Annual) Est. Population Growth	1.69% 2025-2030 (Annual) Est. Population Growth
41.4 2025 Median Age	42.9 2025 Median Age	44.7 2025 Median Age
\$86,357 Average Household Income	\$97,085 Average Household Income	\$98,553 Average Household Income
38.9% Percentage with Associates Degree or Better	38.1% Percentage with Associates Degree or Better	40.0% Percentage with Associates Degree or Better
54.3% Percentage in White Collar Profession	56.3% Percentage in White Collar Profession	57.1% Percentage in White Collar Profession

1,000 SF Industrial Flex Units

1726 SW Biltmore St, Port St Lucie, FL 34984

2025 Demographics



Population

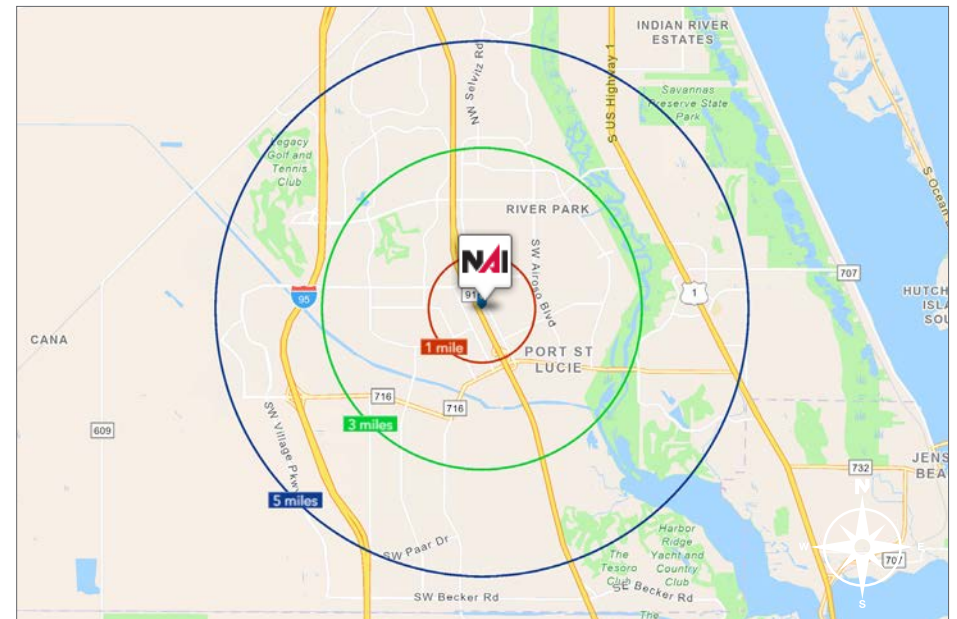
- 1 Mile: 11,424
- 3 Mile: 96,287
- 5 Mile: 208,213

Average Household Income

- 1 Mile: \$90,972
- 3 Mile: \$97,090
- 5 Mile: \$100,775

Median Age

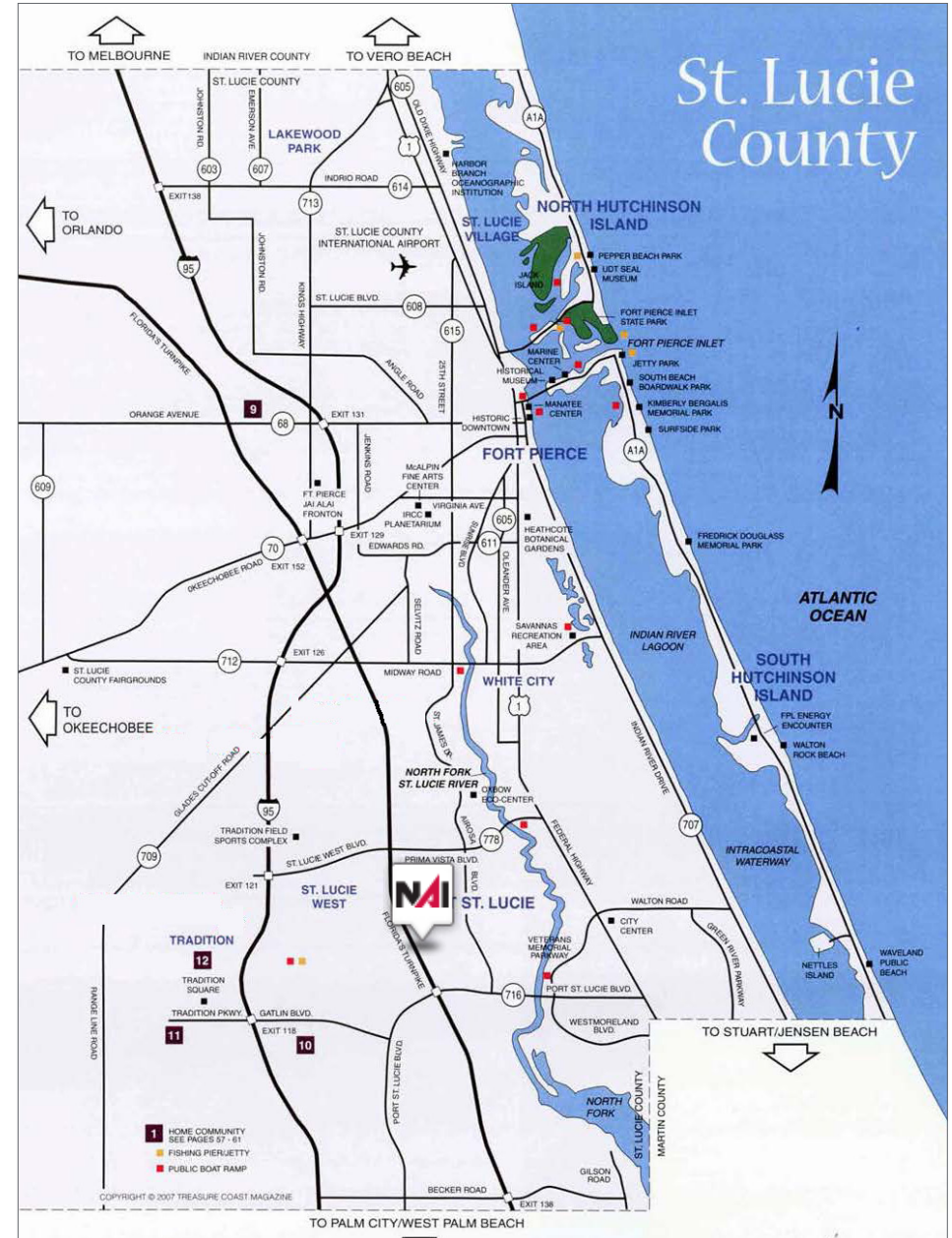
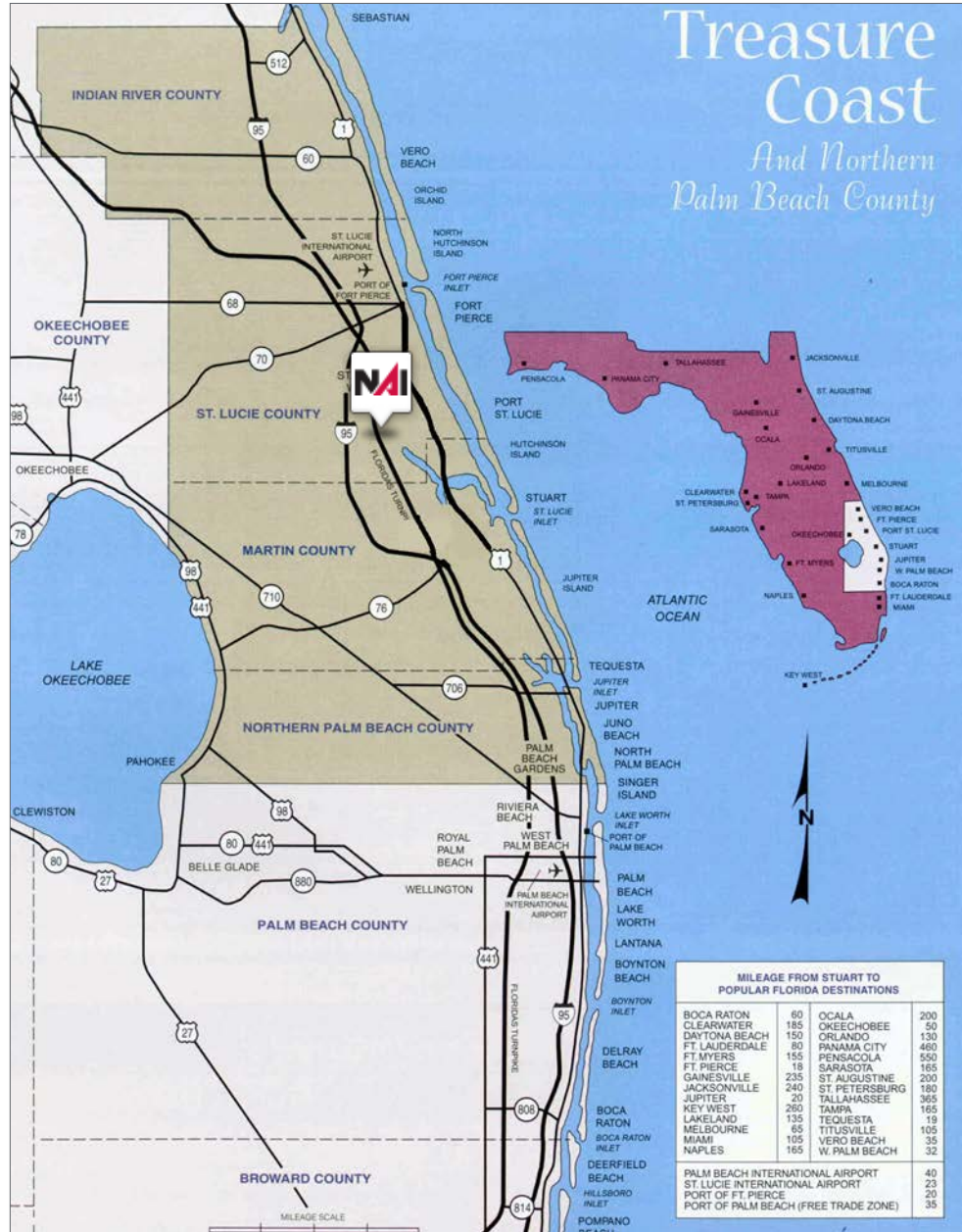
- 1 Mile: 39.9
- 3 Mile: 43.0
- 5 Mile: 45.2



1,000 SF Industrial Flex Units

1726 SW Biltmore St, Port St Lucie, FL 34984

Area Maps



City Overview

Port St. Lucie, Florida



In 1961, Port Saint Lucie was incorporated as a city. Today, consisting of 120 square miles with a population of more than 230,000, the City of Port St. Lucie is the 7th largest City in Florida, the 3rd largest City in South Florida, and the 112th largest City in the United States. The city is led by a five-member elected Council, which sets policy and determines the long-term vision for the city. This system is called a Council-Manager form of local government. Each Council member has one vote, including the Mayor, so legislative authority is equally spread among all five members.

Development within the City has been primarily west of I-95 within the Tradition Development; however, there is much infill development occurring in the General Development platted areas of the city. At its inception, Port St. Lucie was platted by General Development company as 15,000 acres of 80x120 single family lots. The development pattern has largely held true to this plat, with utilities, public works and roads being expanded over the decades to accommodate the growth of the city. As a pro-growth municipality, Port St. Lucie is generally viewed as a favorable environment to do business.

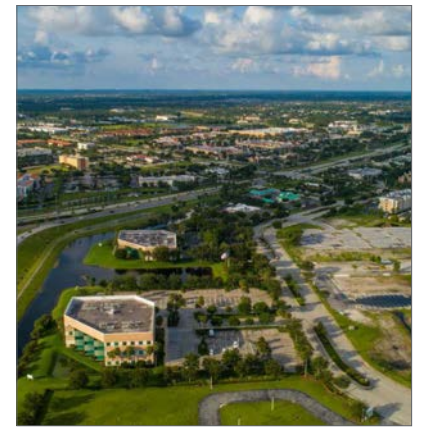
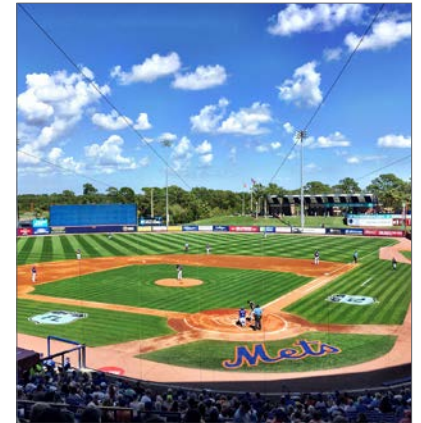
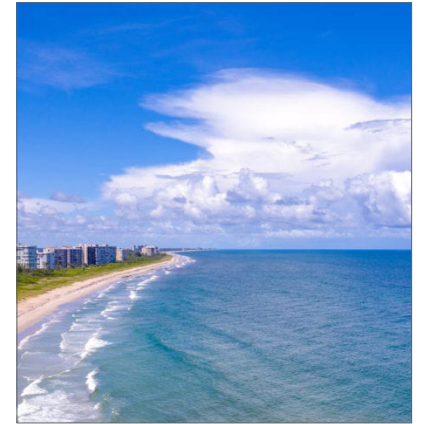
Regional Overview

St. Lucie County, Florida

Extensive, dependable transportation and easy access is the key to growth, and St. Lucie County has both in abundance. Interstate Highway 95 and U.S. Highway 1 provide easy access to the country's east coast, from Key West to Maine. The Florida Turnpike stretches from just south of Miami through northern-central Florida, while State Road 70 runs from U.S. Highway 1 in Fort Pierce west to Bradenton, Florida. St. Lucie County offers a plethora of transportation linkages which include rail, a custom-serviced international airport, and a deep-water port – all of which enable easy access to all St. Lucie County has to offer. The St. Lucie County International Airport is also one of the busiest general aviation airports in the state.

The county has a population of over 375,000 and has experienced growth of over 35% since 2010. The area economy is a blend of emerging life science R&D with traditional manufacturing, agriculture, tourism and services. St. Lucie County's natural resources are enviable, with more than 21 miles of pristine coastline and beaches, coral reefs, more than 20,000 acres of public parks and nature preserves, and miles of rivers and waterways. The area boasts over 20 public and semiprivate courses, with prices ranging from upscale to very affordable, and the great weather allows for play all year round. St. Lucie County is home to Clover Park in Port St. Lucie, the Spring Training home of the New York Mets.

The county is host to Indian River State College, an institution that has won national recognition for excellence and innovation applied toward training and education. St. Lucie County boasts 52 schools with a total of 43,612 students and 8,800 staff. The Economic Development Council of St. Lucie County (EDC) is a non-profit organization with the goal of creating more high-paying jobs for residents by working in concert on agreed upon strategies to promote the retention and expansion of existing businesses, as well as attracting new ones to St. Lucie County. Workers employed in St. Lucie County are clustered in the Health Care and Social Assistance (18.4%) and Retail Trade (11.9%) industries. Workers living in St. Lucie County are concentrated in the Health Care and Social Assistance (16.3%) and Retail Trade (14.1%) industries. Since 2017 the EDC has facilitated 40 expansion and new attraction job-creating projects with a net growth of building area of approximately 6,500,000 square feet.





Nikolaus M. Schroth, CCIM

Principal | Broker Associate
+1 772 286 6292
nikschroth@naisouthcoast.com



J. Jeffery Allman, Jr.

Principal | Broker Associate
+1 772 286 6292 c +1 772 283 1555
jeff@naisouthcoast.com



James McKinney

Sales Associate
+1 772 349 3414
jamesmckinney@naisouthcoast.com

1,000 SF Industrial Flex Units

1726 SW Biltmore St, Port St Lucie, FL 34984



FOR LEASE:

\$1,600/Month Gross