

CEDARWOODS BUSINESS PARK

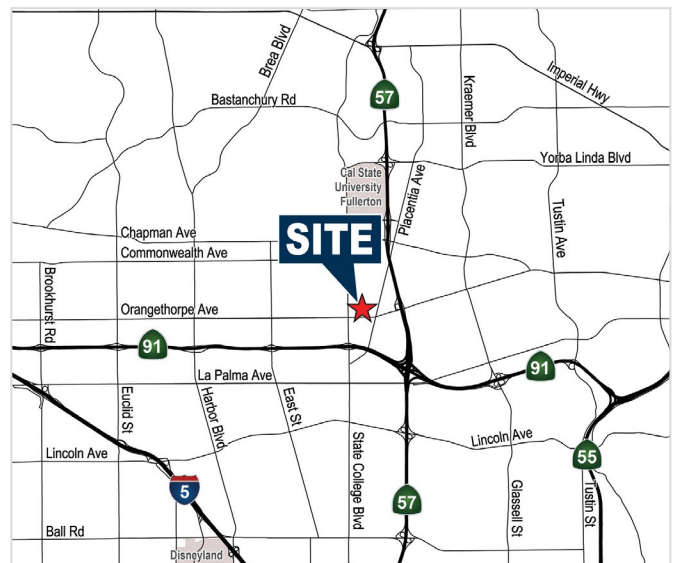
2479 E. Orangethorpe Avenue, Fullerton

FOR LEASE
2,360 SQ. FT.



PROPERTY FEATURES

- ±2,360 Square Feet
- ±25% Office Space
- Power: TBD
- Gas
- One (1) Oversize Warehouse Door
- 18' - 20' Clear Height
- Sprinklers
- Skylights
- Near 91/57 Freeway Interchange, with Excellent Freeway Access



Voit

REAL ESTATE SERVICES

BARRY WALSH

Vice President

Lic #01213417

714.935.2309

bwalsh@voitco.com

2400 E. Katella Avenue, Suite 750

Anaheim, CA 92806

www.VoitCo.com

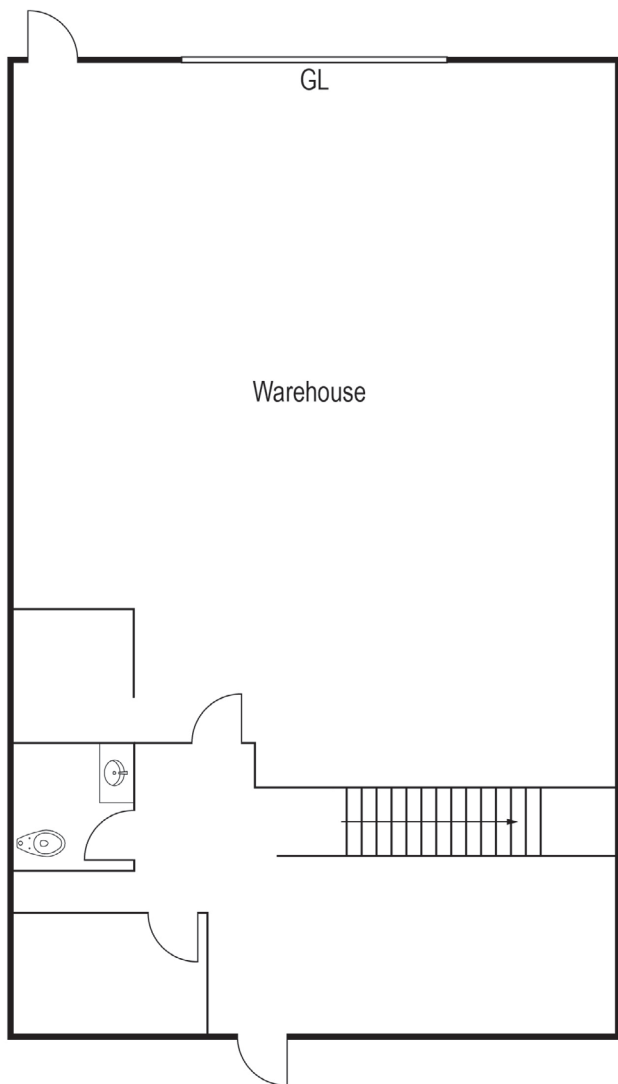
Licensed as a Real Estate Salesperson by the CA Bur of Real Estate. The information contained herein has been obtained from sources we deem reliable. While we have no reason to doubt its accuracy, we do not guarantee it. ©2024 Voit Real Estate Services, Inc. All Rights Reserved. Lic #01991785.

CEDARWOODS BUSINESS PARK

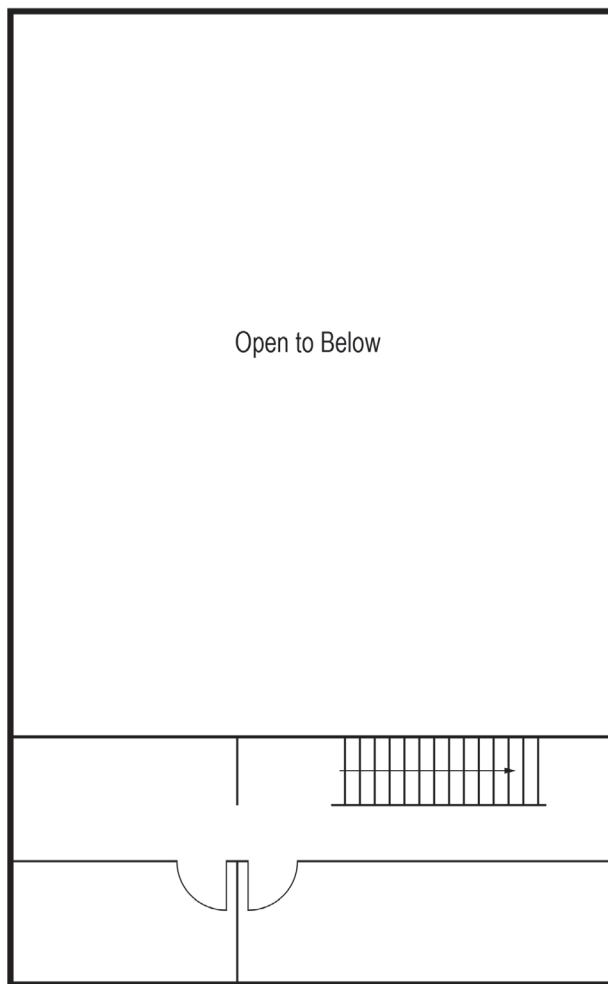
2479 E. Orangethorpe Avenue, Fullerton

FOR LEASE
2,360 SQ. FT.

FLOOR PLAN



First Floor



Second Floor