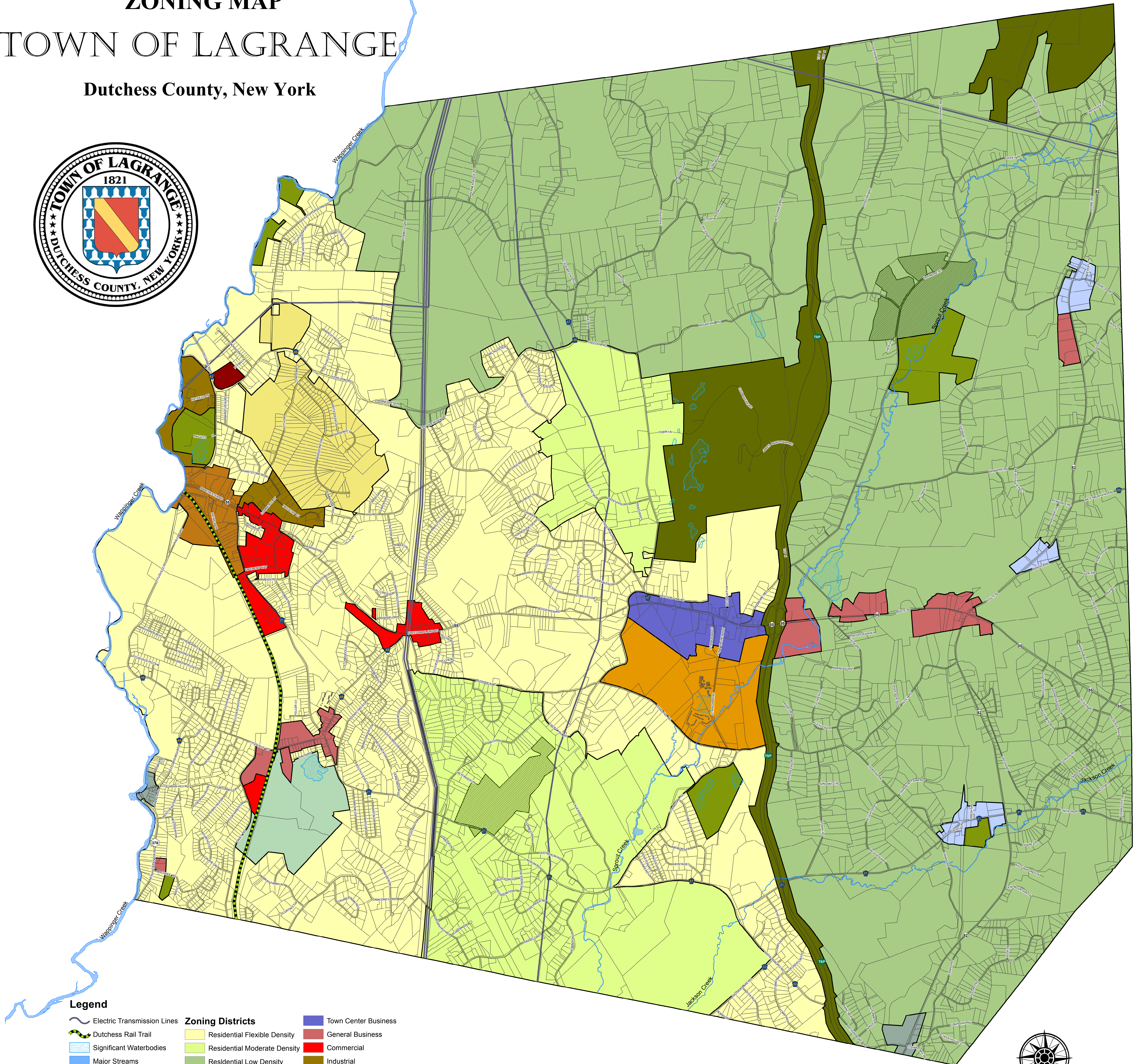
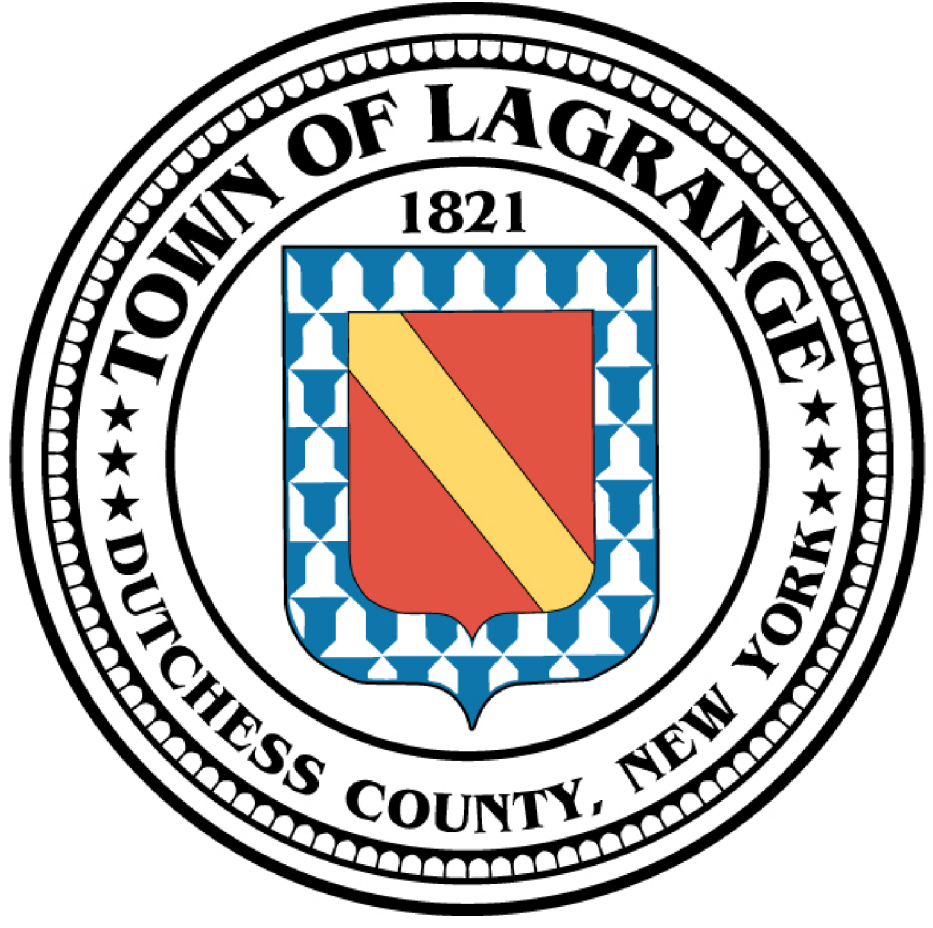


ZONING MAP

TOWN OF LAGRANGE

Dutchess County, New York



Legend

- | | | |
|-----------------------------|------------------------------|--------------------------------|
| Electric Transmission Lines | Zoning Districts | Town Center Business |
| Dutchess Rail Trail | Residential Flexible Density | General Business |
| Significant Waterbodies | Residential Moderate Density | Commercial |
| Major Streams | Residential Low Density | Industrial |
| Open Space Overlay District | Residential Frank & Sleight | Town Park |
| Parcel Boundaries | Town Center Residential | State Park Reuse |
| | Hamlet | Daley Farm Planned Development |
| | Gateway Hamlet | Overlook Planned Development |
| | Manchester Gateway Hamlet | |

- * Planned Office District currently not allocated.
 - * Senior Citizen Housing District currently not allocated.
- Other regulatory maps controlling development:
- * Ridgeline Protection
 - * Wetlands Protection
 - * Groundwater Protection
 - * FEMA
 - * Nonconforming Residential Setback Relief Map

Prepared by: Dutchess County Department of Planning & Development
 Map Date: October 31, 2014
 Adopted Date: October 22, 2014

