

**CLASS 'A' OFFICE SPACE  
IN CHERRY HILL'S GOLDEN TRIANGLE**  
51 HADDONFIELD ROAD | CHERRY HILL, NJ

**51  
HADDONFIELD**

the  
TOP of the  
TRIANGLE



**SUITE 350 COMING AVAILABLE 3/1/2026**



**TAKE A LOOK AROUND!**  
CLICK HERE FOR  
VIRTUAL TOURS

**Suites  
Available  
from 1,109 to 5,499 square feet**



**EV Charging Stations &  
Solar Rooftop Are Here!**

INSTITUTIONAL OWNERSHIP & PROPERTY MANAGEMENT



TIME EQUITIES INC.



LEASING CONTACTS

**Rebecca Ting, SIOR**  
+1 856 234 9600 ext 206  
rebecca.ting@naimertz.com

**Julie Kronfeld**  
+1 856 802 6516  
julie.kronfeld@naimertz.com

**NAIMertz**

21 Roland Avenue  
Mount Laurel, NJ 08054  
+1 856 234 9600  
naimertz.com



# 51 HADDONFIELD

the TOP of the TRIANGLE

**51 HADDONFIELD** is a 96,000-square-foot office building in Cherry Hill, New Jersey. The three-story, elevator-served building features a glass atrium, café, on-site building manager, exterior bike racks, ample parking and outdoor picnic spot.

Haddonfield Road is Cherry Hill's primary retail corridor, featuring both the Cherry Hill Mall and Garden State Park shopping complex. Within 5 minutes of 51 Haddonfield are scores of shopping, dining, and lodging options.

## CURRENT AVAILABILITIES

1ST FLOOR	SF	
SUITE 100	1,109	
SUITE 130	1,856	★ <a href="#">CLICK HERE FOR VIRTUAL TOUR</a>
SUITE 135	1,724	EXPANSION

2ND FLOOR	SF	
SUITE 270	1,672	

3RD FLOOR	SF	
SUITE 330	2,755	
SUITE 340	2,128	★ <a href="#">CLICK HERE FOR VIRTUAL TOUR</a>
SUITE 350	3,371	Coming available March 1, 2026. Can be combined with Suite 340 for a total of 5,499 RSF.



### LEASING CONTACTS

Rebecca Ting, SIOR  
+1 856 234 9600 ext 206  
rebecca.ting@naimertz.com

Julie Kronfeld  
+1 856 802 6516  
julie.kronfeld@naimertz.com



LEASE RATE  
**\$20.50 PSF**  
+ ELECTRIC

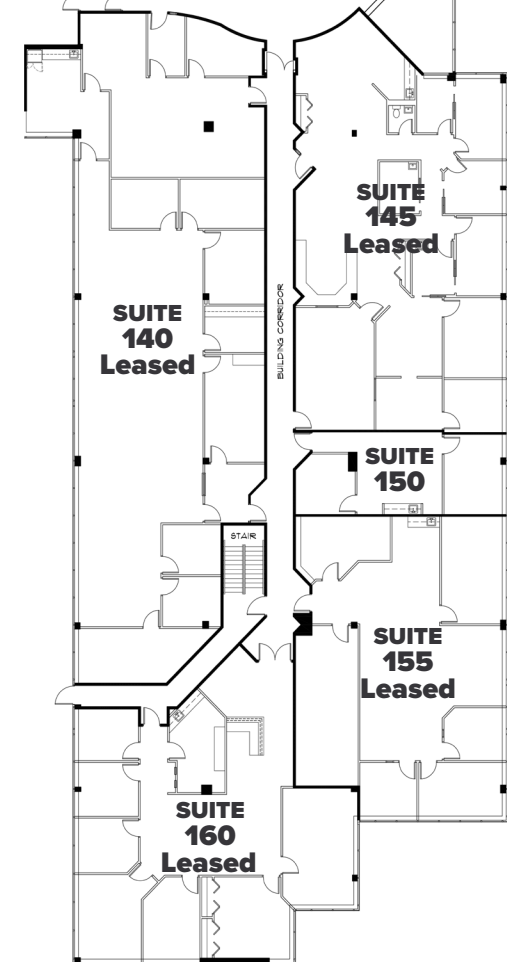
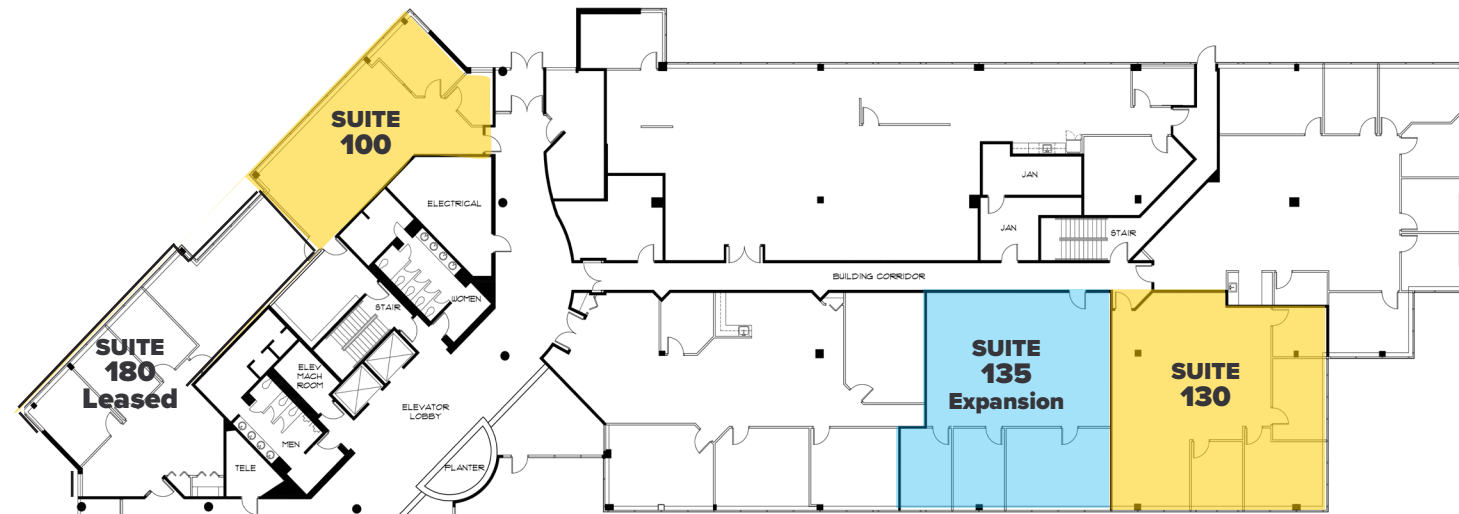
IDEALLY LOCATED  
SUBURBAN  
OFFICE SPACE



ON-SITE  
CAFE

**51**  
**HADDONFIELD**

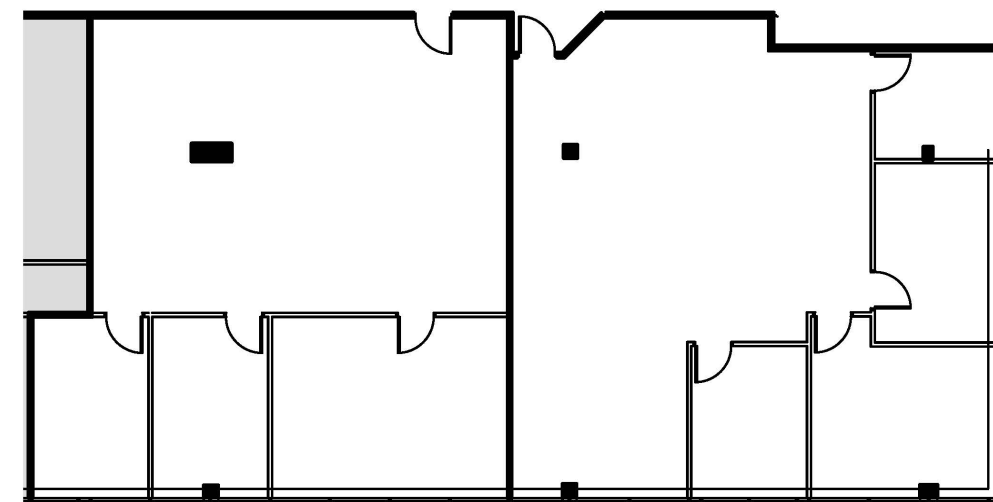
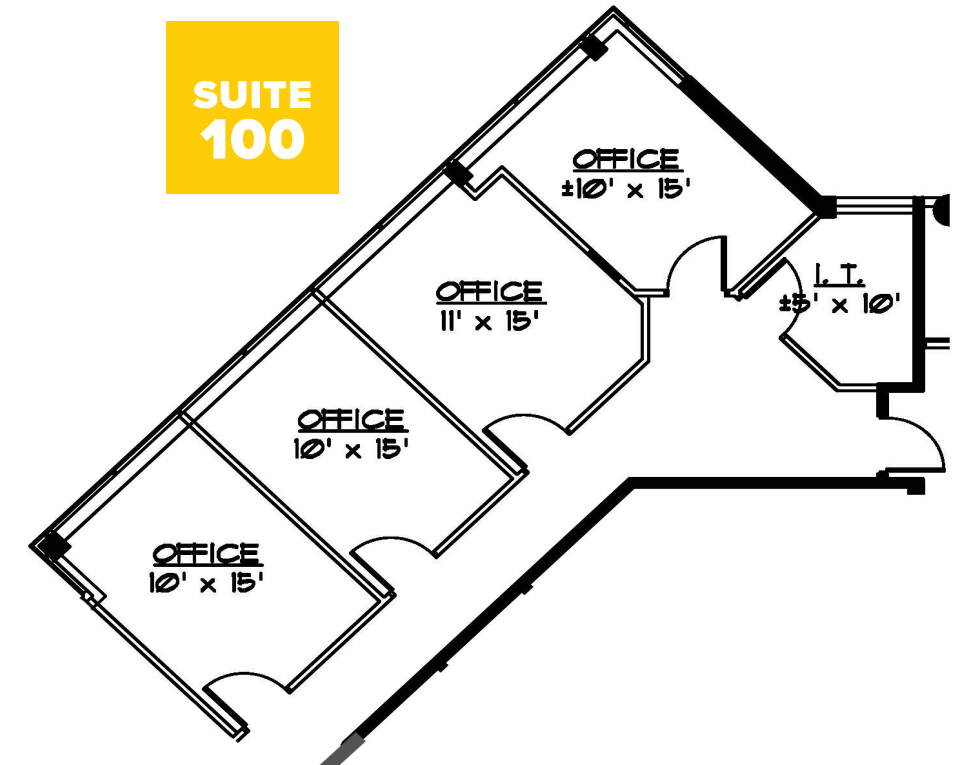
the  
TOP of the  
TRIANGLE



**AVAILABLE SUITES**

SUITE 100	1,109	
SUITE 130	1,856	<a href="#">CLICK HERE FOR VIRTUAL TOUR</a>
SUITE 135	1,724	EXPANSION

**1ST**  
**FLOOR**



**SUITE**  
**135**

**SUITE**  
**130**

LEASING CONTACTS

Rebecca Ting, SIOR  
+1 856 234 9600 ext 206  
rebecca.ting@naimertz.com

Julie Kronfeld, SIOR  
+1 856 802 6516  
julie.kronfeld@naimertz.com



**51**  
**HADDONFIELD**

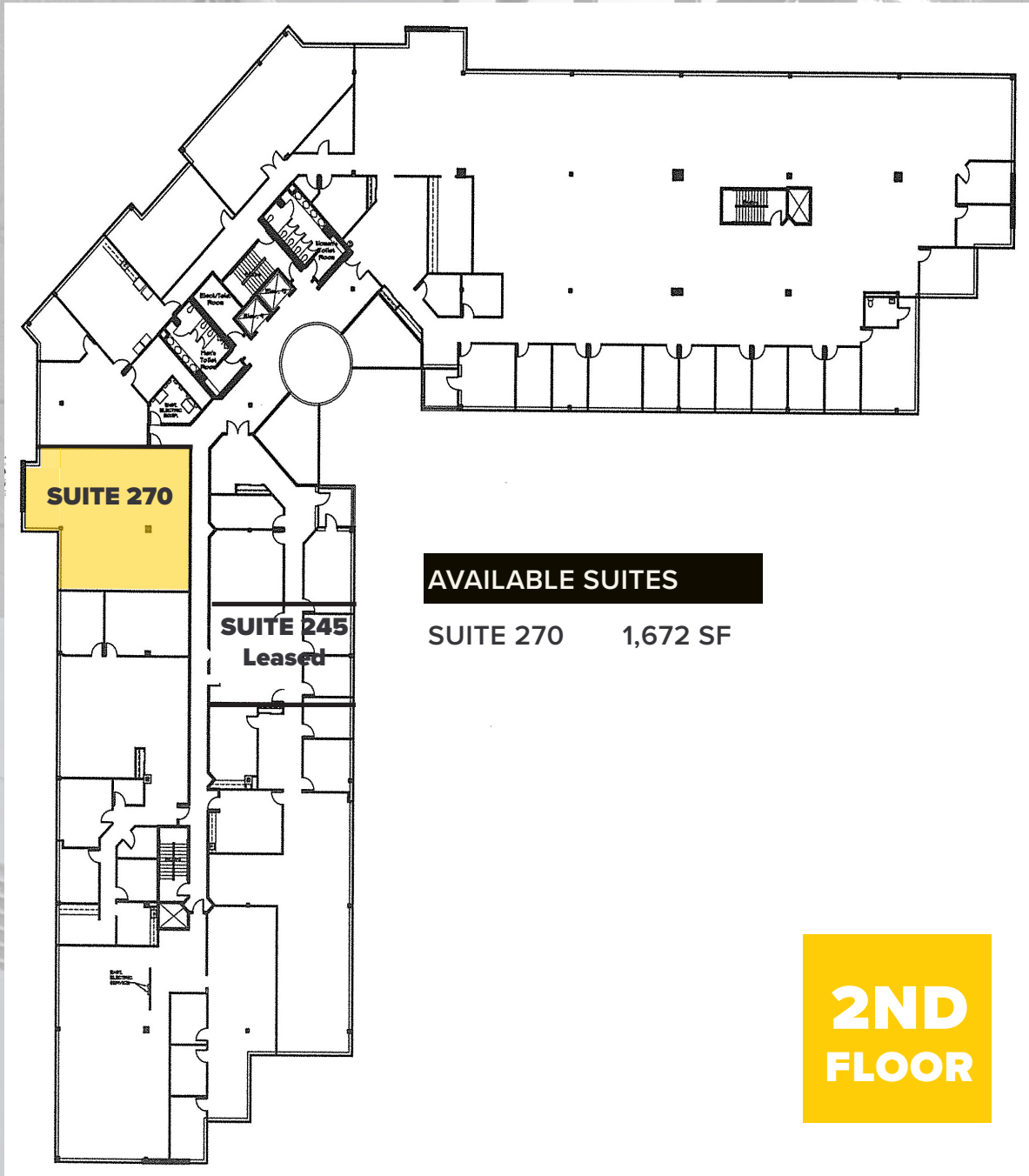
the  
TOP of the  
TRIANGLE

LEASE RATE  
**\$20.00 PSF**  
+ ELECTRIC

**51**  
**HADDONFIELD**

the  
TOP of the  
TRIANGLE

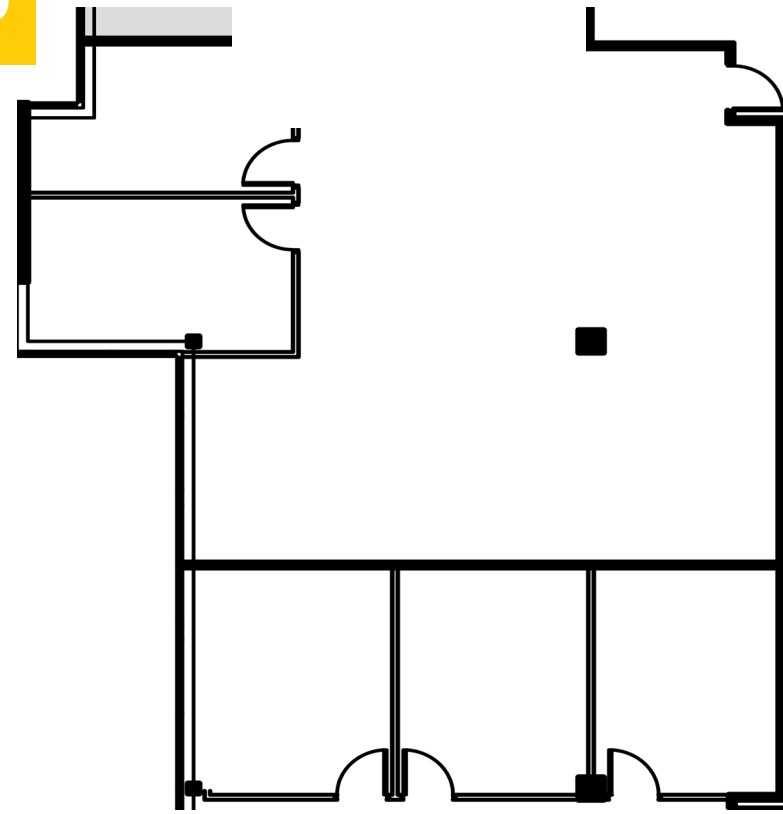
FLOORPLANS



**AVAILABLE SUITES**

SUITE 270 1,672 SF

**SUITE 270**



SUITE 245 VACANT  
864 SF

**51**  
**HADDONFIELD**

the  
TOP of the  
TRIANGLE

LEASING CONTACTS

Rebecca Ting, SIOR  
+1 856 234 9600 ext 206  
rebecca.ting@naimertz.com

Julie Kronfeld  
+1 856 802 6516  
julie.kronfeld@naimertz.com



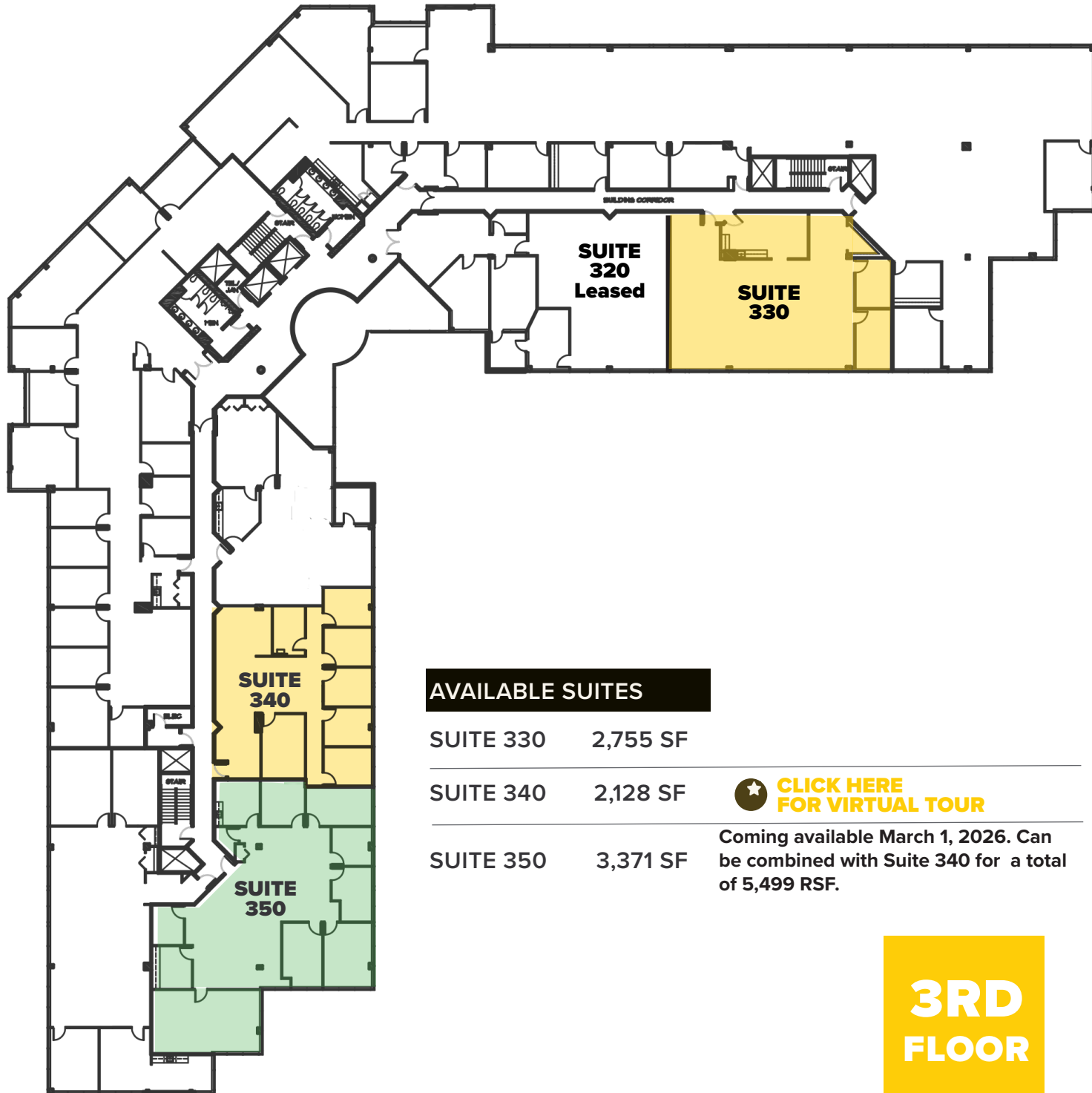
LEASE RATE  
**\$20.00 PSF**  
+ ELECTRIC

**51 HADDONFIELD**

the TOP of the TRIANGLE

FLOORPLANS

**3RD FLOOR**



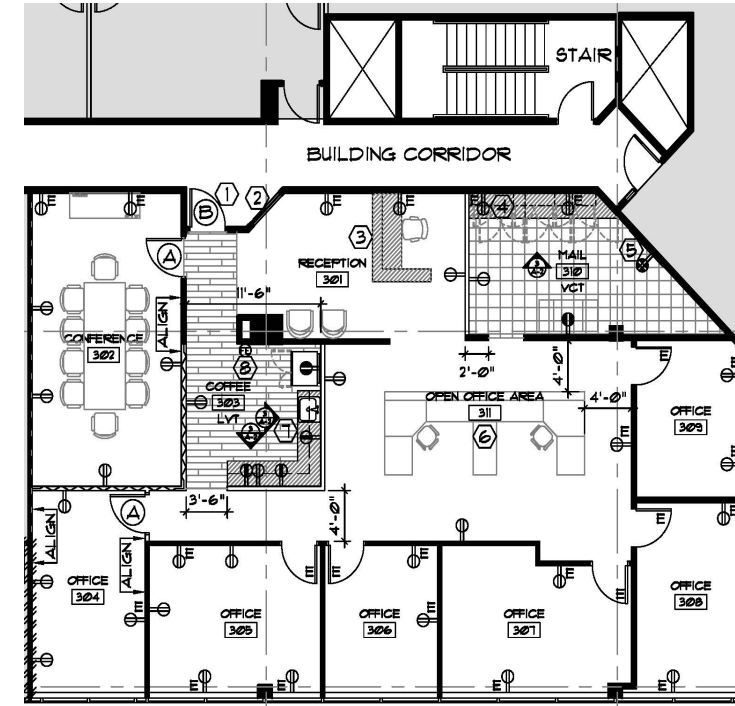
**AVAILABLE SUITES**

SUITE 330	2,755 SF
SUITE 340	2,128 SF
SUITE 350	3,371 SF

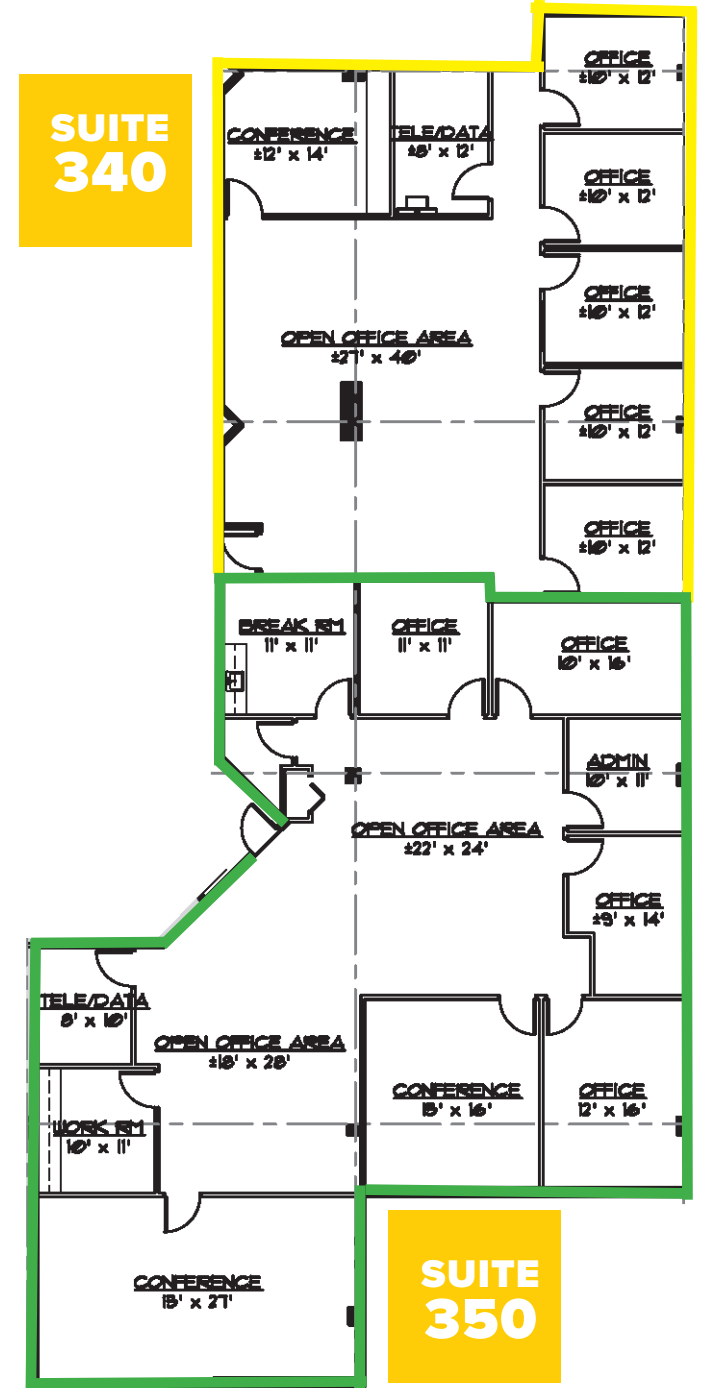
[★ CLICK HERE FOR VIRTUAL TOUR](#)

Coming available March 1, 2026. Can be combined with Suite 340 for a total of 5,499 RSF.

**3RD FLOOR**



**SUITE 330**



**SUITE 340**

**SUITE 350**

LEASING CONTACTS

Rebecca Ting, SIOR  
+1 856 234 9600 ext 206  
rebecca.ting@naimertz.com

Julie Kronfeld  
+1 856 802 6516  
julie.kronfeld@naimertz.com

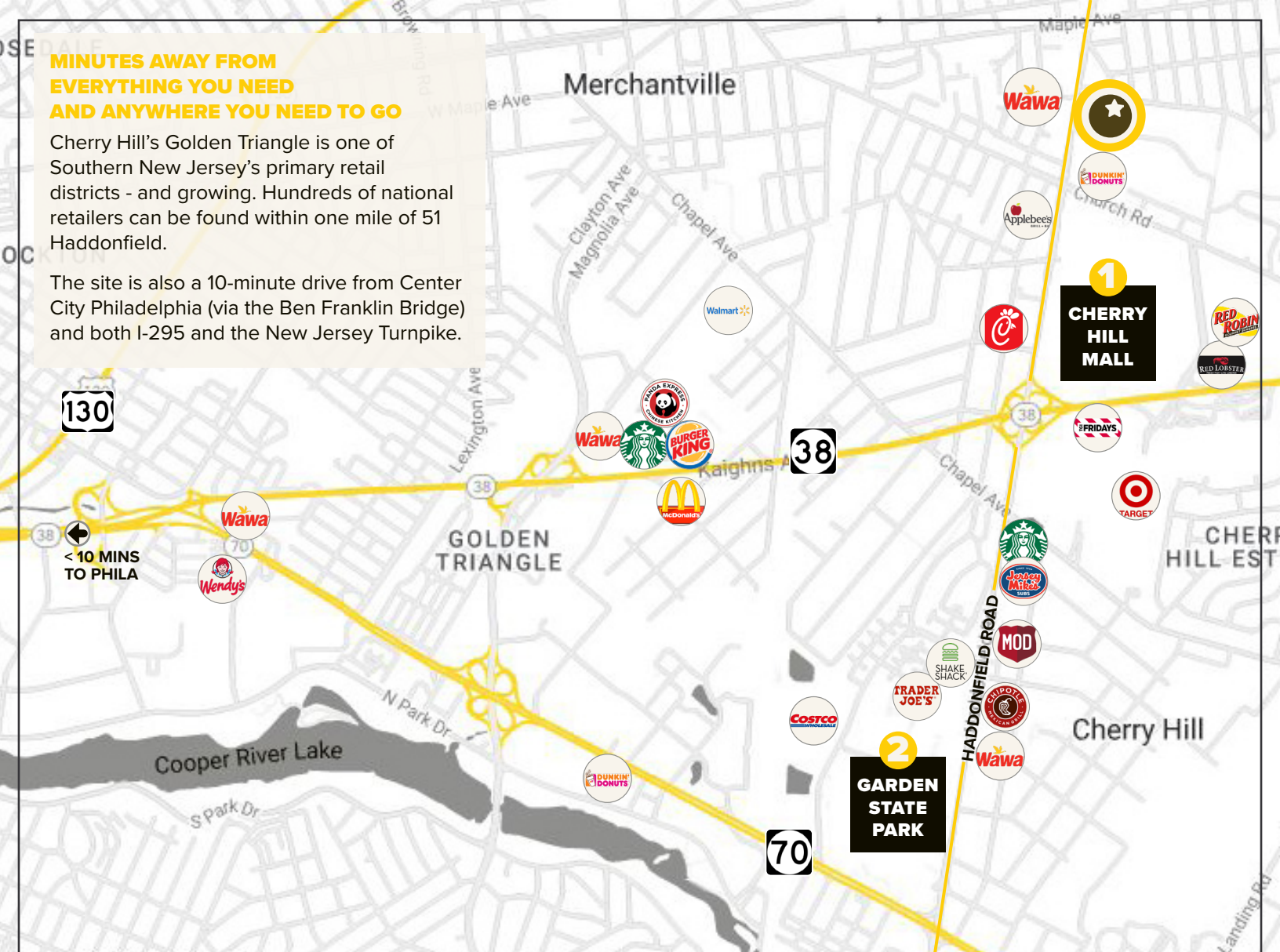
**51 HADDONFIELD**  
the TOP of the TRIANGLE

LEASE RATE  
**\$20.00 PSF**  
+ ELECTRIC

**MINUTES AWAY FROM  
EVERYTHING YOU NEED  
AND ANYWHERE YOU NEED TO GO**

Cherry Hill's Golden Triangle is one of Southern New Jersey's primary retail districts - and growing. Hundreds of national retailers can be found within one mile of 51 Haddonfield.

The site is also a 10-minute drive from Center City Philadelphia (via the Ben Franklin Bridge) and both I-295 and the New Jersey Turnpike.



**1 CHERRY HILL MALL**

- |  |                    |
|--|--------------------|
| Nordstrom                                    | Macy's             |
| JC Penney's                                  | The Capital Grille |
| Seasons 52                                   | Maggiano's         |
| Saladworks                                   |                    |
| ... and over 150 other shops and restaurants |                    |

**2 GARDEN STATE PARK**

- |   |                        |
|---|------------------------|
| Wegman's                                    | Home Depot             |
| Best Buy                                    | The Cheesecake Factory |
| Brio  | Sugar Factory          |
| Panera                                      | Raising Cane's         |
| Five Guys                                   | Starbucks              |
| ... and over 75 other shops and restaurants |                        |



**CLASS 'A' OFFICE SPACE  
IN CHERRY HILL'S GOLDEN TRIANGLE**

51 HADDONFIELD ROAD | CHERRY HILL, NJ

**51  
HADDONFIELD**

the TOP of the TRIANGLE

LEASING CONTACTS

Rebecca Ting, SIOR  
+1 856 234 9600 ext 206  
rebecca.ting@naimertz.com

Julie Kronfeld  
+1 856 802 6516  
julie.kronfeld@naimertz.com



LEASE RATE  
**\$20.00 PSF**  
+ ELECTRIC