



**For Sale | \$4,200,000** Fee Simple

## **1143 BISHOP STREET HONOLULU, HI 96813**

### **DAUGHTERS OF SAINT PAUL CONVENT BUILDING**

Freestanding building located in  
the heart of Downtown Honolulu.



**Vanessa Kop (B)**  
RB-20654  
808-256-0370  
vkop@cbi-hawaii.com

**NAI CBI Hawaii**

1712 S. King Street Suite 201  
Honolulu, HI 96826  
808.942.7100 | www.cbi-hawaii.com







## 1143 Bishop Street

### INVESTMENT SUMMARY

Asking Price:	\$4,200,000
Tenure:	Fee Simple
Stories:	Three-Stories and Basement
TMK:	1-2-1-10-9
Zoning:	BMX-4
Area:	Central Business District   Downtown, Honolulu
Building Size:	± 19,737 SF
Lot Size:	± 5,278 SF
Year Built:	1929
Other:	Owner User Opportunity
	Elevator On Site

### PROPERTY DESCRIPTION

NAI CBI Hawaii proudly presents 1143 Bishop Street. Formerly known as the Daughters of Saint Paul Convent Building and Bookstore. Located in the Central Business District in Downtown Honolulu, considered the center of commerce in the State of Hawaii occupied by the vast majority of the State's financial, professional, and service organizations. This iconic three-story building has been a part of Honolulu's metropolis since 1929 with renovations, alterations, and repairs made throughout the years.

This mixed-use building serves a variety of operations; the ground floor presents retail space, the second floor serves as office space, the third floor has the possibilities for a residential group-living facility, and the basement offers storage space.



Scan the QR code for  
**VIRTUAL TOUR**

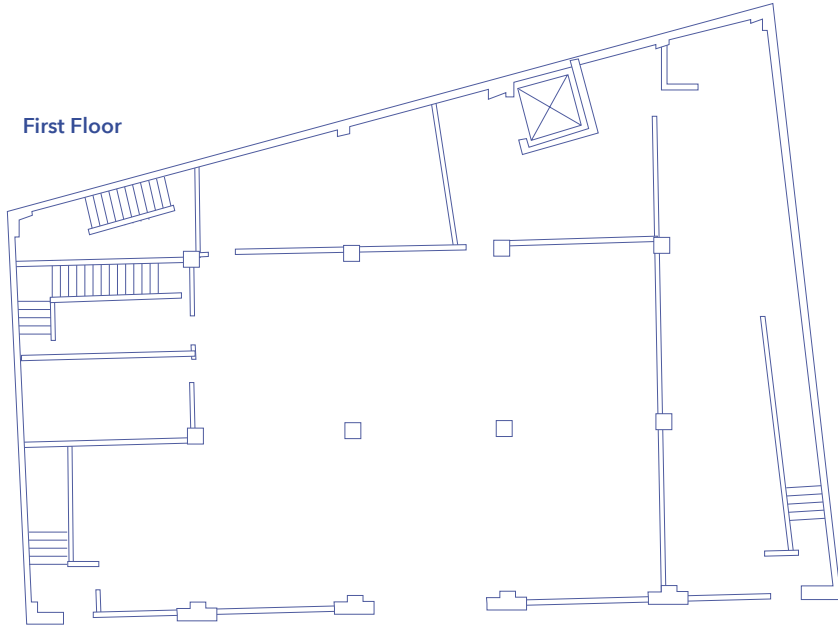


**Vanessa Kop (B)**  
RB-20654  
808-256-0370  
vkop@cbi-hawaii.com

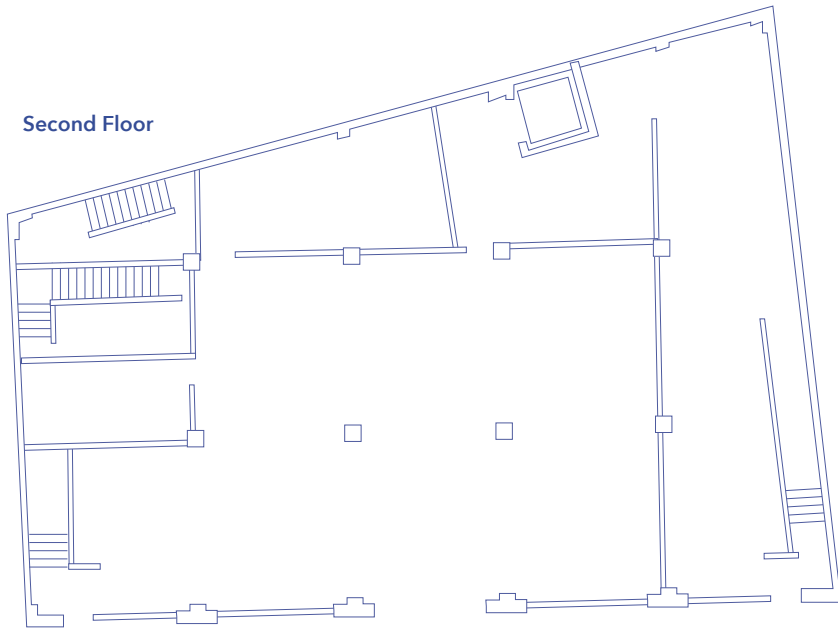
**NAI CBI Hawaii**  
1712 S. King Street Suite 201  
Honolulu, HI 96826  
808.942.7100 | [www.cbi-hawaii.com](http://www.cbi-hawaii.com)



First Floor



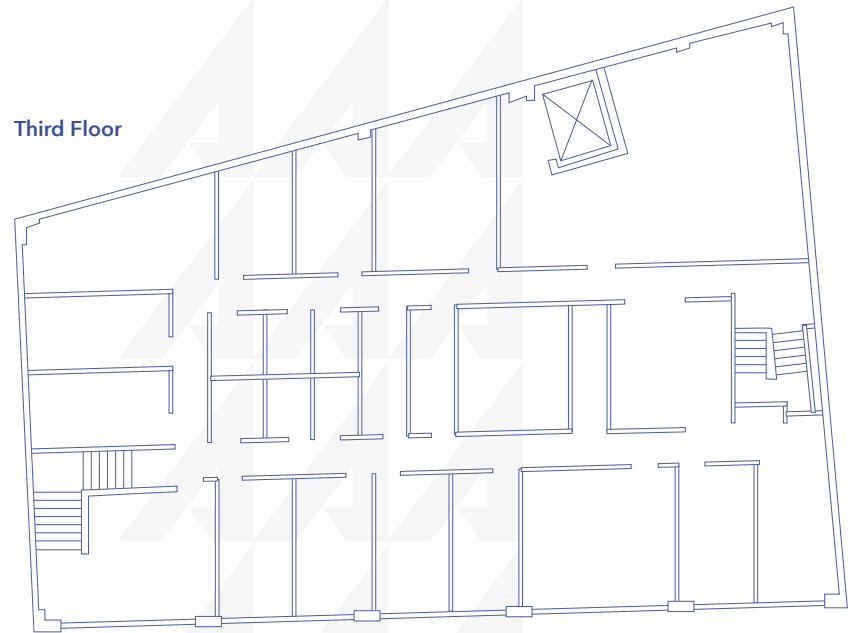
Second Floor



## SPACES

1st Floor:	± 5,252 SF
	Retail
2nd Floor:	± 3,981 SF
	Office   Conference Room   Kitchen
3rd Floor:	± 5,252 SF
	Residential Group Living   11 Rooms
	6 Bathrooms   Kitchen
Basement:	± 5,252 SF
	Storage with capabilities for divided spaces
Total:	± 19,737 SF

Third Floor



**Vanessa Kop (B)**  
RB-20654  
808-256-0370  
vkop@cbi-hawaii.com

**NAI CBI Hawaii**  
1712 S. King Street Suite 201  
Honolulu, HI 96826  
808.942.7100 | [www.cbi-hawaii.com](http://www.cbi-hawaii.com)







**Vanessa Kop (B)**  
 RB-20654  
 808-256-0370  
[vkop@cbi-hawaii.com](mailto:vkop@cbi-hawaii.com)

**NAI CBI Hawaii**  
 1712 S. King Street Suite 201  
 Honolulu, HI 96826  
 808.942.7100 | [www.cbi-hawaii.com](http://www.cbi-hawaii.com)





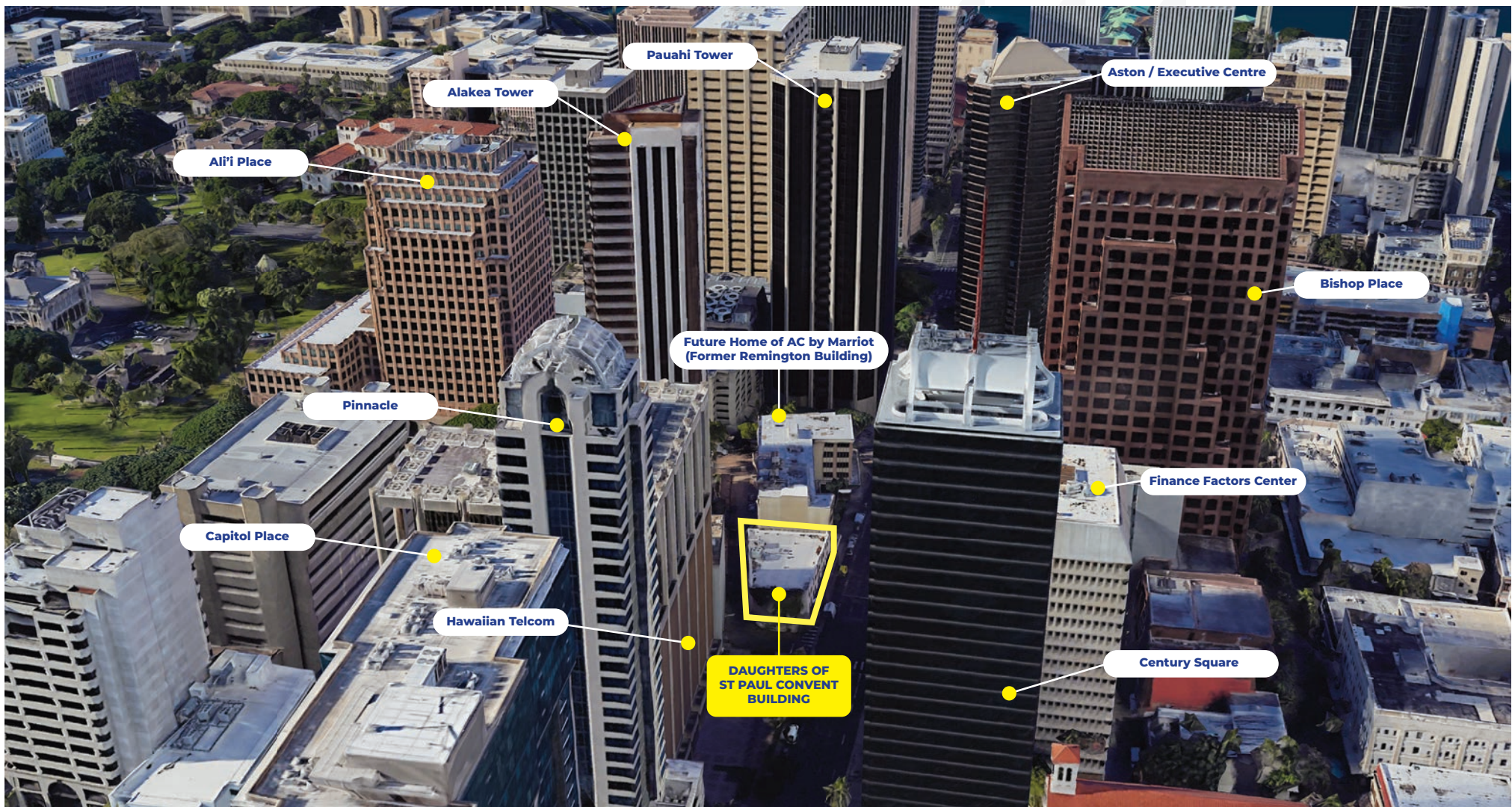


**Vanessa Kop (B)**  
 RB-20654  
 808-256-0370  
[vkop@cbi-hawaii.com](mailto:vkop@cbi-hawaii.com)

**NAI CBI Hawaii**  
 1712 S. King Street Suite 201  
 Honolulu, HI 96826  
 808.942.7100 | [www.cbi-hawaii.com](http://www.cbi-hawaii.com)







## NEIGHBORS

1143 Bishop is located in the heart of Downtown Honolulu and is surrounded by a diverse range of neighboring buildings. Sitting alongside the Remington building, set to become the future home of AC by Marriott and neighbored by Aston at Executive Centre, The Residence at Bishop Place, Finance Factors Center and Hawaiian Telcom Building. A mix of residential, commercial and hospitality options are offered, making 1143 Bishop a highly sought-after location in the heart of the city.

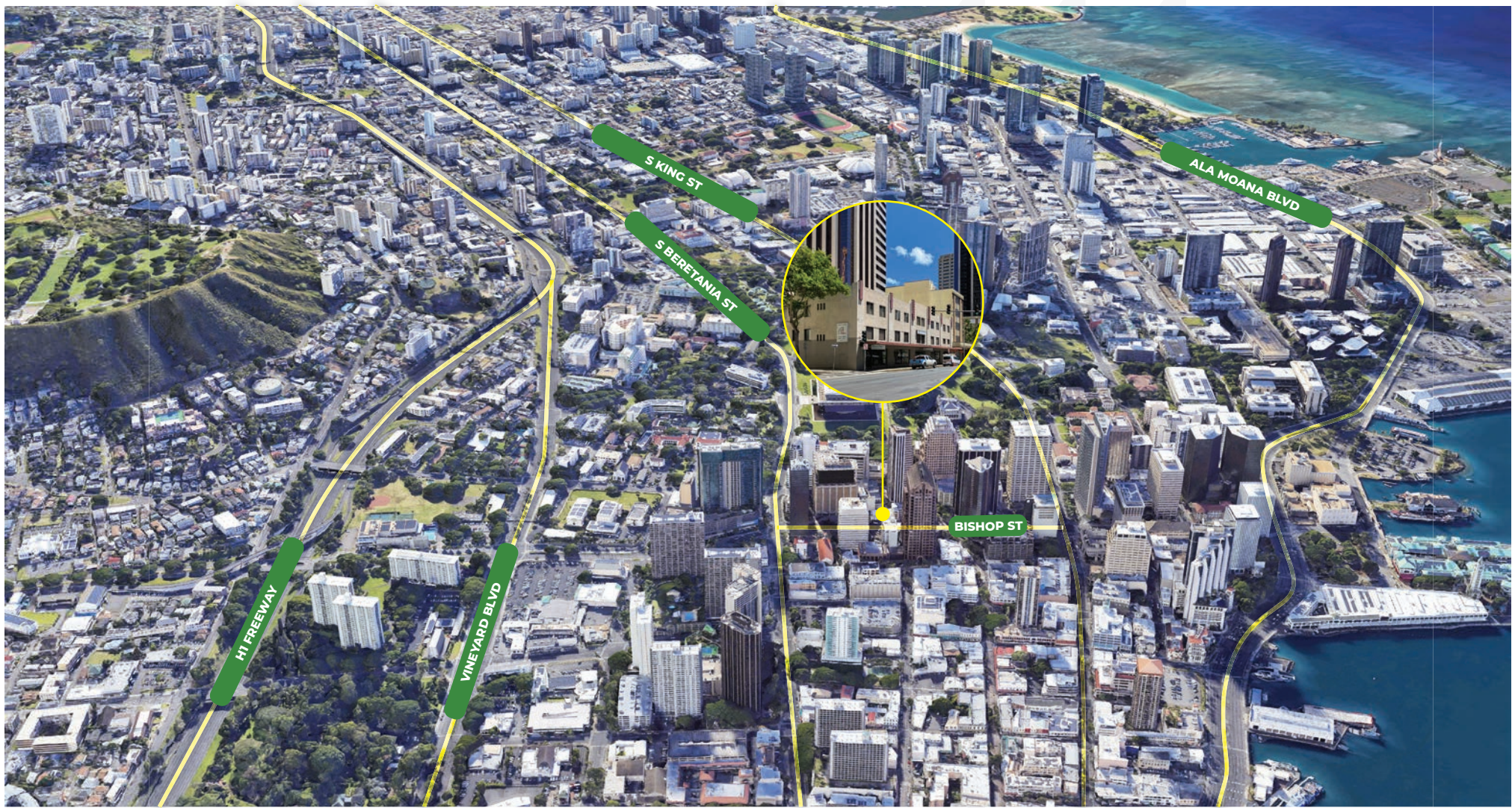


**Vanessa Kop (B)**  
RB-20654  
808-256-0370  
vkop@cbi-hawaii.com

**NAI CBI Hawaii**  
1712 S. King Street Suite 201  
Honolulu, HI 96826  
808.942.7100 | [www.cbi-hawaii.com](http://www.cbi-hawaii.com)







LOCATION	POPULATION	1 MILE	2 MILES	3MILES	HH & INCOME	1 MILE	2 MILES	3MILES
1143 Bishop Street is a mixed use building in Honolulu's Central Business District. The property is located in the heart of Honolulu and offers easy access to major thoroughfares to and from Downtown Honolulu. It is walking distance from restaurants, retail, and more. The property has high visibility from Bishop Street and Union Mall.	Total Population	36,720	110,068	188,924	Total Households	16,450	46,026	75,755
	Average Age	43.3	43.4	41.5	# of Persons per HH	2.2	2.4	2.5
	Average Age (M)	40.4	40.7	39.3	Avg HH Income	\$58,661	\$62,545	\$65,513
	Average Age (F)	46.6	46.4	43.8	Avg House Value	\$452,683	\$474,503	\$514,223

*\* Demographic data derived from 2010 US Census*



**Vanessa Kop (B)**  
RB-20654  
808-256-0370  
vkop@cbi-hawaii.com

**NAI CBI Hawaii**  
1712 S. King Street Suite 201  
Honolulu, HI 96826  
808.942.7100 | www.cbi-hawaii.com







## PROPERTY DESCRIPTION

NAI CBI Hawaii proudly presents 1143 Bishop Street. Formerly known as the Daughters of Saint Paul Convent Building and Bookstore. Located in the Central Business District in Downtown Honolulu, considered the center of commerce in the State of Hawaii occupied by the vast majority of the State's financial, professional, and service organizations. This iconic three-story building has been a part of Honolulu's metropolis since 1929 with renovations, alterations, and repairs made throughout the years.

This mixed-use building serves a variety of operations; the ground floor presents retail space, the second floor serves as office space, the third floor has the possibilities for a residential group-living facility, and the basement offers storage space.



**Vanessa Kop (B)**  
RB-20654  
808-256-0370  
vkop@cbi-hawaii.com

Scan the QR  
code for  
**VIRTUAL  
TOUR**



**For Sale | \$4,800,000** Fee Simple

## 1143 BISHOP STREET HONOLULU, HI 96813

### DAUGHTERS OF ST. PAUL CONVENT BUILDING

#### INVESTMENT SUMMARY

TMK:	1-2-1-10-9
Zoning:	BMX-4
Area:	Central Business District Downtown, Honolulu
Building Size:	± 19,737 SF
Lot Size:	± 5,278 SF
Year Built:	1929
Stories:	Three with Basement
Other:	Freestanding Building Owner User Opportunity Elevator On Site

#### SPACES

<b>1st Floor:</b>	± 5,252 SF Retail
<b>2nd Floor:</b>	± 3,981 SF Office   Conference Room   Kitchen
<b>3rd Floor:</b>	± 5,252 SF Residential Group Living   11 Rooms 6 Bathrooms   Kitchen
<b>Basement:</b>	± 5,252 SF Storage with capabilities for divided spaces
<b>Total:</b>	± 19,737 SF

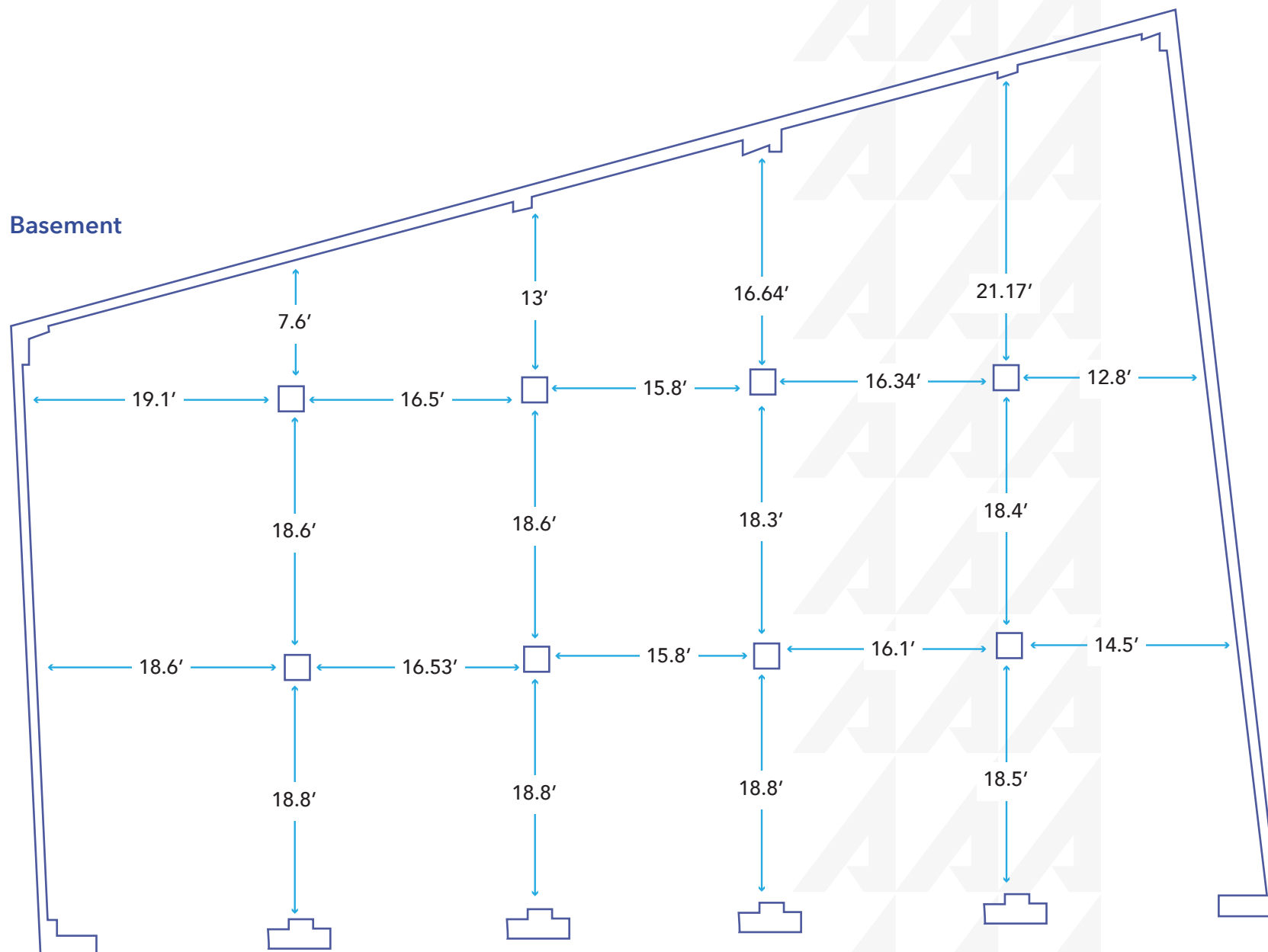
**NAI CBI Hawaii**

1712 S. King Street Suite 201  
Honolulu, HI 96826  
808.942.7100 | www.cbi-hawaii.com





Basement



**Vanessa Kop (B)**  
 RB-20654  
 808-256-0370  
 vkop@cbi-hawaii.com

**NAI CBI Hawaii**  
 1712 S. King Street Suite 201  
 Honolulu, HI 96826  
 808.942.7100 | www.cbi-hawaii.com

