

6562 Belvedere Road

West Palm Beach, FL 33411

±2.55 ACRE DEVELOPMENT APPROVED FOR ±35,022 SF OF WAREHOUSE/OFFICE



Features

- + Site Plan Approved for ±35,022 SF of Warehouse/Office Space
- + Building Plan Originally Designed with Eight Individual Warehouse Units
- + Designed with Grade Level Loading and 24' Clear Height
- + Ideal for single user, partial user or multitenant lease development
- + Direct Frontage and Visibility on Jog Road at the Corner of Belvedere Road
- + Convenient access to the Florida Turnpike, Southern Boulevard and I-95
- + Parcel ID 00-42-43-27-05-005-0051 and 00-42-43-27-05-005-0054
- + Zoned IL, Unincorporated Palm Beach County
- + 34 Auto Parking Spaces

Contact Us

KIRK NELSON

Executive Vice President
+1 561 716 9936
kirk.nelson@cbre.com

ROBERT C. SMITH

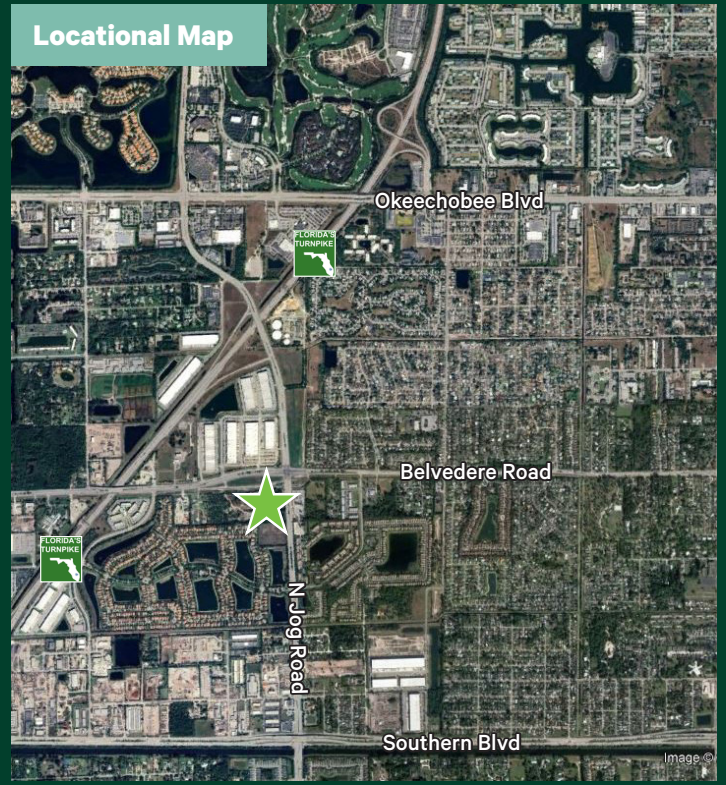
Executive Vice President
+1 561 707 5558
robert.c.smith@cbre.com

PRICE - CALL FOR DETAILS

±2.55 ACRES OF INDUSTRIAL LAND

6562 Belvedere Road | West Palm Beach, FL 33411

For Sale



Contact Us

KIRK NELSON
Executive Vice President
+1 561 716 9936
kirk.nelson@cbre.com

ROBERT C. SMITH
Executive Vice President
+1 561 707 5558
robert.c.smith@cbre.com

© 2024 CBRE, Inc. All rights reserved. This information has been obtained from sources believed reliable, but has not been verified for accuracy or completeness. You should conduct a careful, independent investigation of the property and verify all information. Any reliance on this information is solely at your own risk. CBRE and the CBRE logo are service marks of CBRE, Inc. All other marks displayed on this document are the property of their respective owners, and the use of such logos does not imply any affiliation with or endorsement of CBRE. Photos herein are the property of their respective owners. Use of these images without the express written consent of the owner is prohibited.