



IDÉAL POUR PROPRIÉTAIRE OCCUPANT OU INVESTISSEUR EN COMMERCE DE DÉTAIL
IDEAL FOR OWNER OCCUPANT OR RETAIL INVESTOR
511-523 BOULEVARD DU CURÉ-LABELLE, LAVAL

FREDERICK NORMAND
Courtier immobilier commercial
514 442 8637
f.normand@kw.com

WILLIAM GAPIN
Courtier immobilier commercial
514 717 1671
w.gapin@kw.com

KELLER WILLIAMS COMMERCIAL
9140 Boulevard Leduc, suite 230
Brossard, Québec J4Y 0L2



L'IMMEUBLE THE BUILDING

SURFACE TOTALE DU BÂTIMENT | TOTAL BUILDING AREA

36 207 pi ca | sq. ft.

SURFACE TOTALE DE LOCATION | TOTAL LEASING AREA

35 752 pi ca | sq. ft.

SUPERFICIE TOTALE | TOTAL LAND AREA

80496 pi ca | sq. ft.

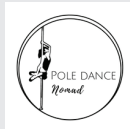
PRIX | PRICE

9 950 000 \$

BOULEVARD DU CURÉ-LABELLE

VACANT

3729
PI CA / SQ. FT.



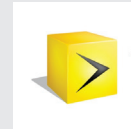
1580
PI CA / SQ. FT.



3752
PI CA / SQ. FT.

VACANT

13763
PI CA / SQ. FT.



1803
PI CA / SQ. FT.



4990
PI CA / SQ. FT.



6133
PI CA / SQ. FT.

INTÉRIEUR INTERIOR



INTÉRIEUR INTERIOR



INTÉRIEUR

INTERIOR



OWNER OCCUPANT
PROPRIÉTAIRE OCCUPANT

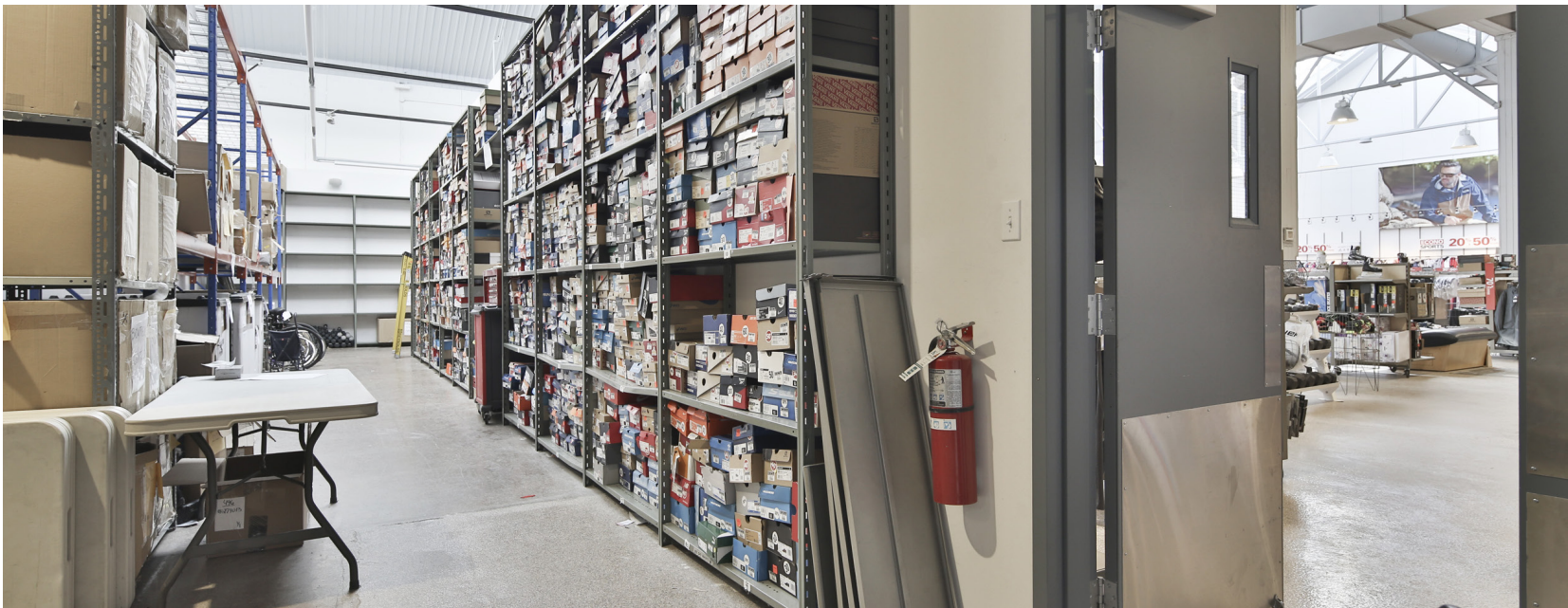


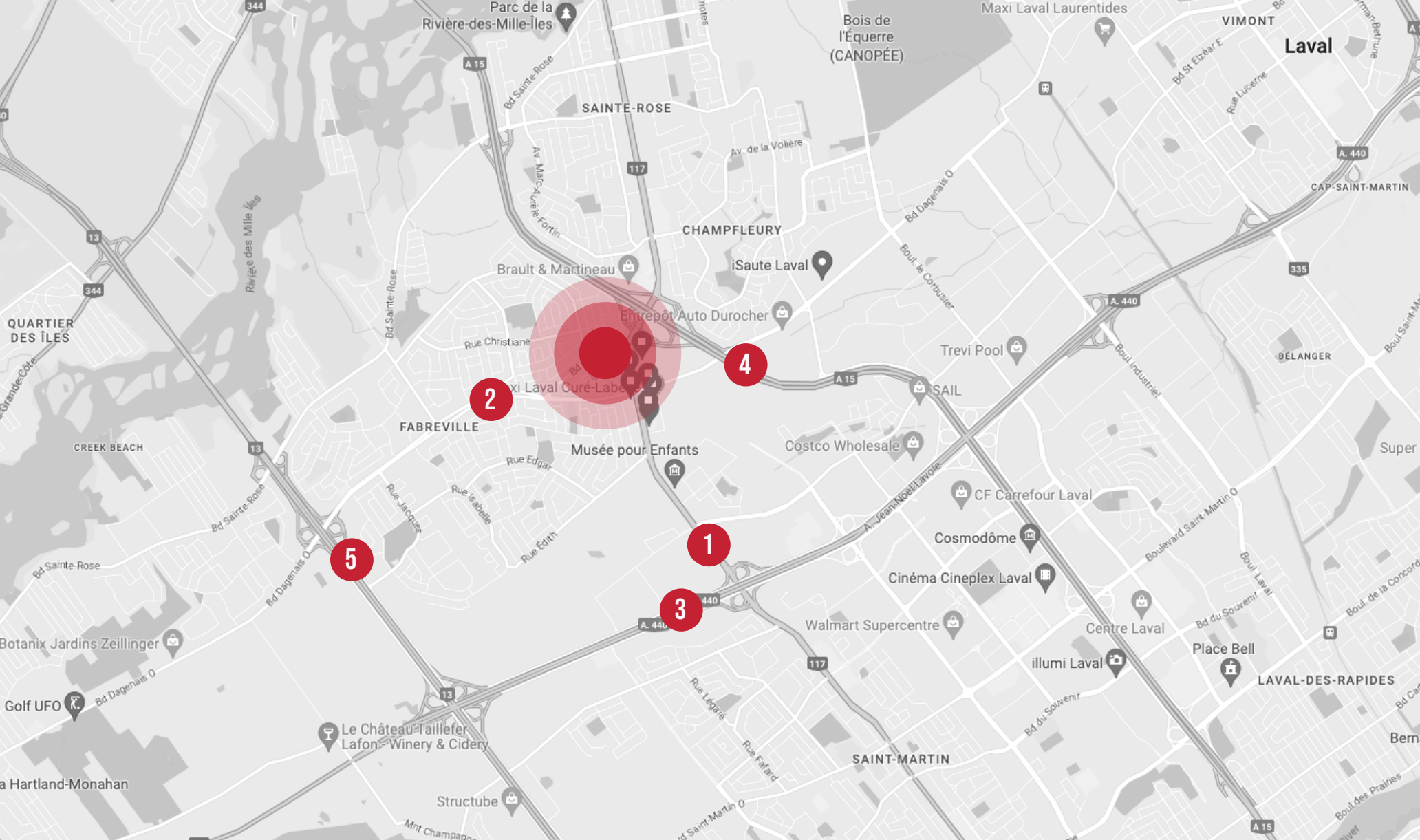
OWNER OCCUPANT PROPRIÉTAIRE OCCUPANT



OWNER OCCUPANT

PROPRIÉTAIRE OCCUPANT

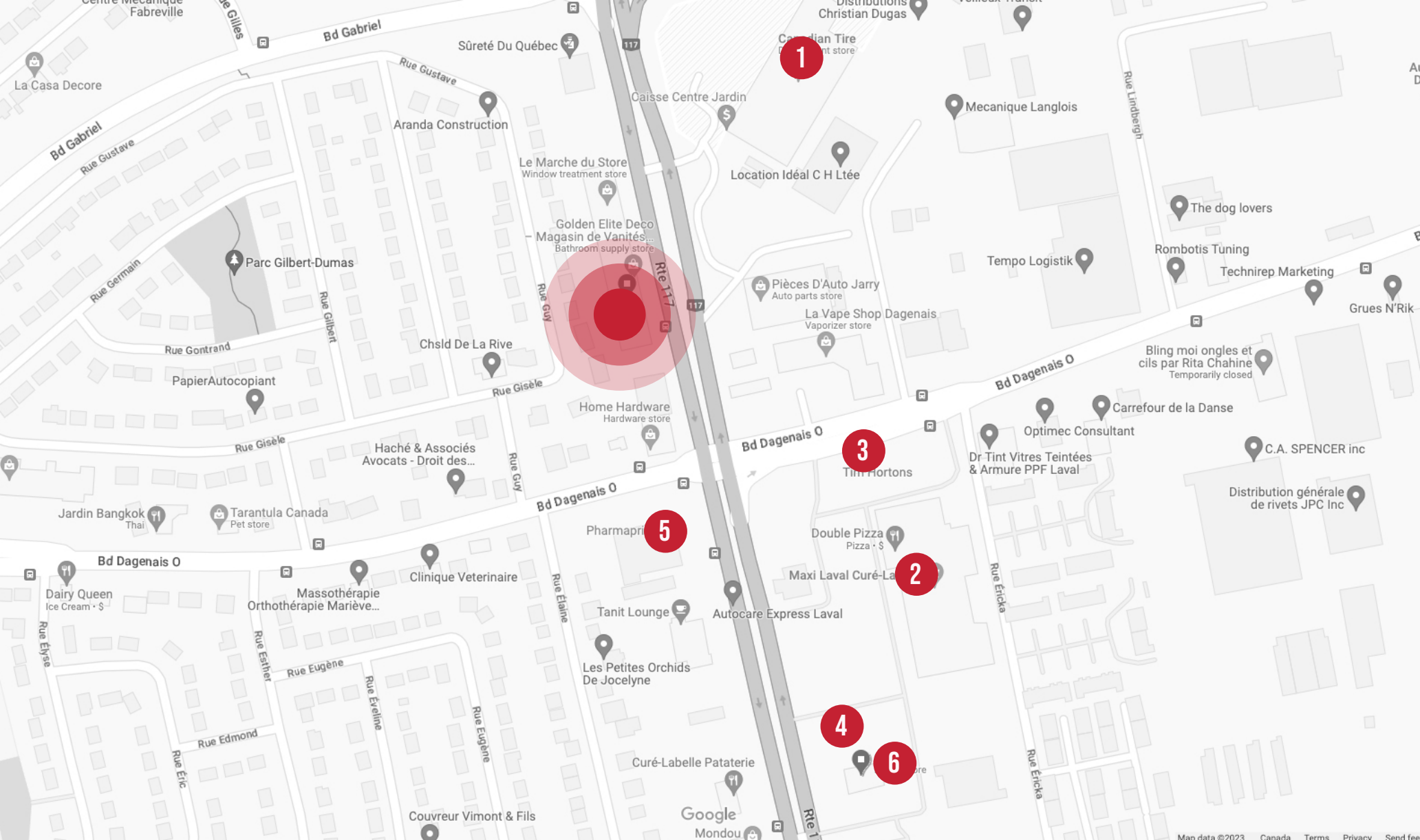




- 1 Boulevard Curé Labelle
- 2 Boulevard Dagenais Ouest
- 3 L'autoroute 440 relie Laval d'un bout à l'autre
- 4 L'autoroute 15 relie Montréal à la Rive-Nord (Blainville, St-Thérèse, Boisbriand, St-Jérôme, Mirabel, etc.)
- 5 L'autoroute 13 relie Montréal (Dorval, Lachine) à la Rive-Nord (Saint-Eustache, Deux-Montagnes, Oka, etc.)

- 1 Curé Labelle Boulevard
- 2 Dagenais Ouest Boulevard
- 3 Highway 440 connects Laval from end to end
- 4 Highway 15 connects Montreal to North Shore (Blainville, St-Thérèse, Boisbriand, St-Jérôme, Mirabel, etc.)
- 5 Highway 13 connects Montreal (Dorval, Lachine) to North Shore (Saint-Eustache, Deux-Montagnes, Oka, etc.)





1 Canadian Tire

2 Maxi

3 Tim Horton

4 Mcdonald

5 Pharmaprix

6 SAQ

