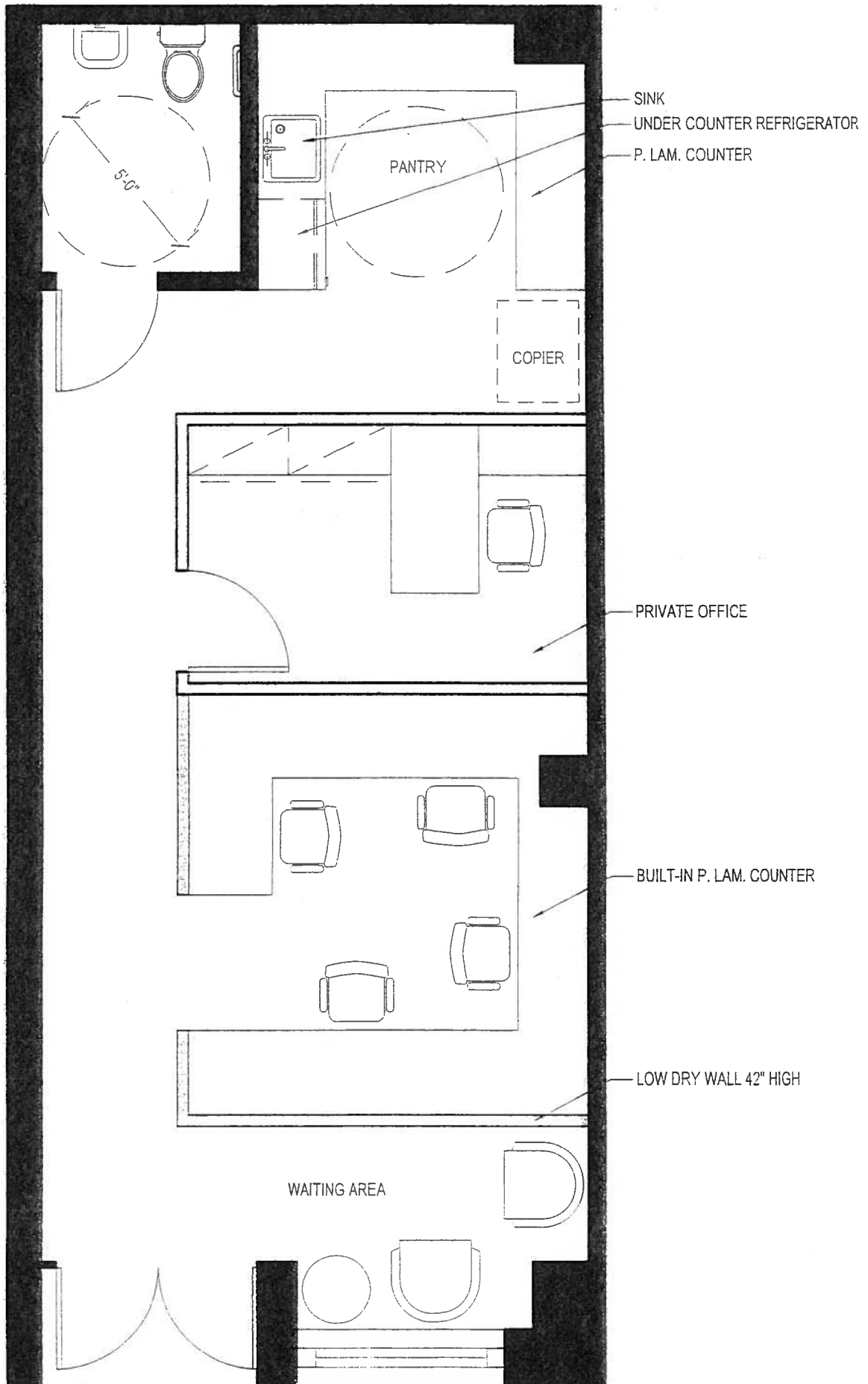
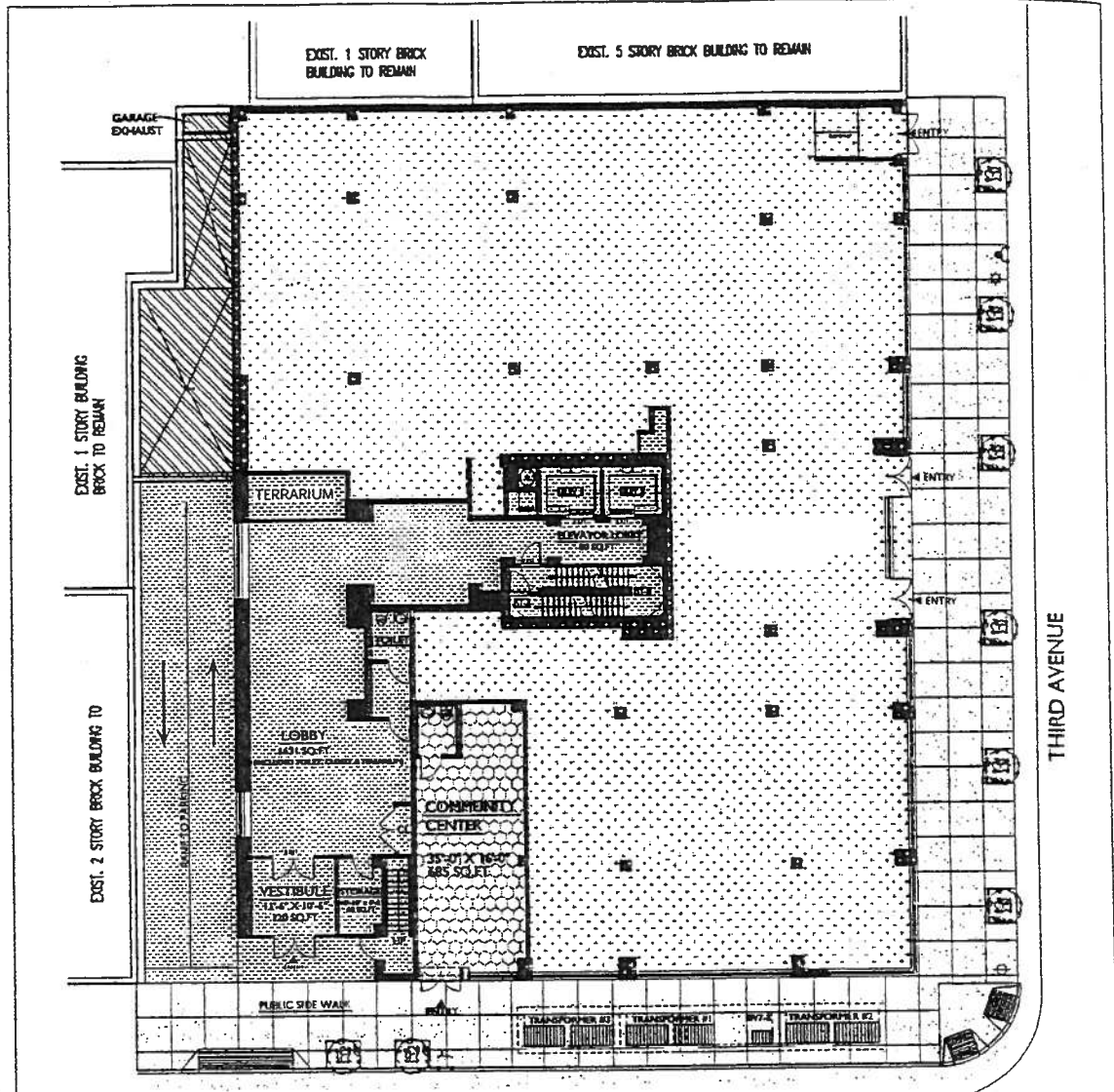


SCALE: 1/4" = 1'-0"





EAST 119TH STREET
GROUND FLOOR PLAN (LOBBY)
 181 EAST 119TH STREET

KEY	
	RESIDENTIAL COMMON ELEMENT
	COMMUNITY FACILITY <i>(Demised Premises)</i>
	GENERAL COMMON ELEMENT
	COMMERCIAL UNIT
	LIGHT POLE
	HYDRANT
	TRAFFIC LIGHT
	BUILDING ENTRANCE

BARRY RICE ARCHITECT PC
 54 West 38th Street
 New York, NY, 10018
 212 944 1929 telephone
 212 944 1920 facsimile

MARCH 21, 2008 (REVISED)

© 2003 BARRY RICE ARCHITECT