

GENERAL NOTES:
-

REVISION NUMBER: 1

PROJECT LOCATION:

702 W COMMERCE ST,
DALLAS, TX 75208

CONTRACTOR:

FORTY-FOUR CONSTRUCTION

CONTACT:
RYAN CHANEY
(972) 741-9096

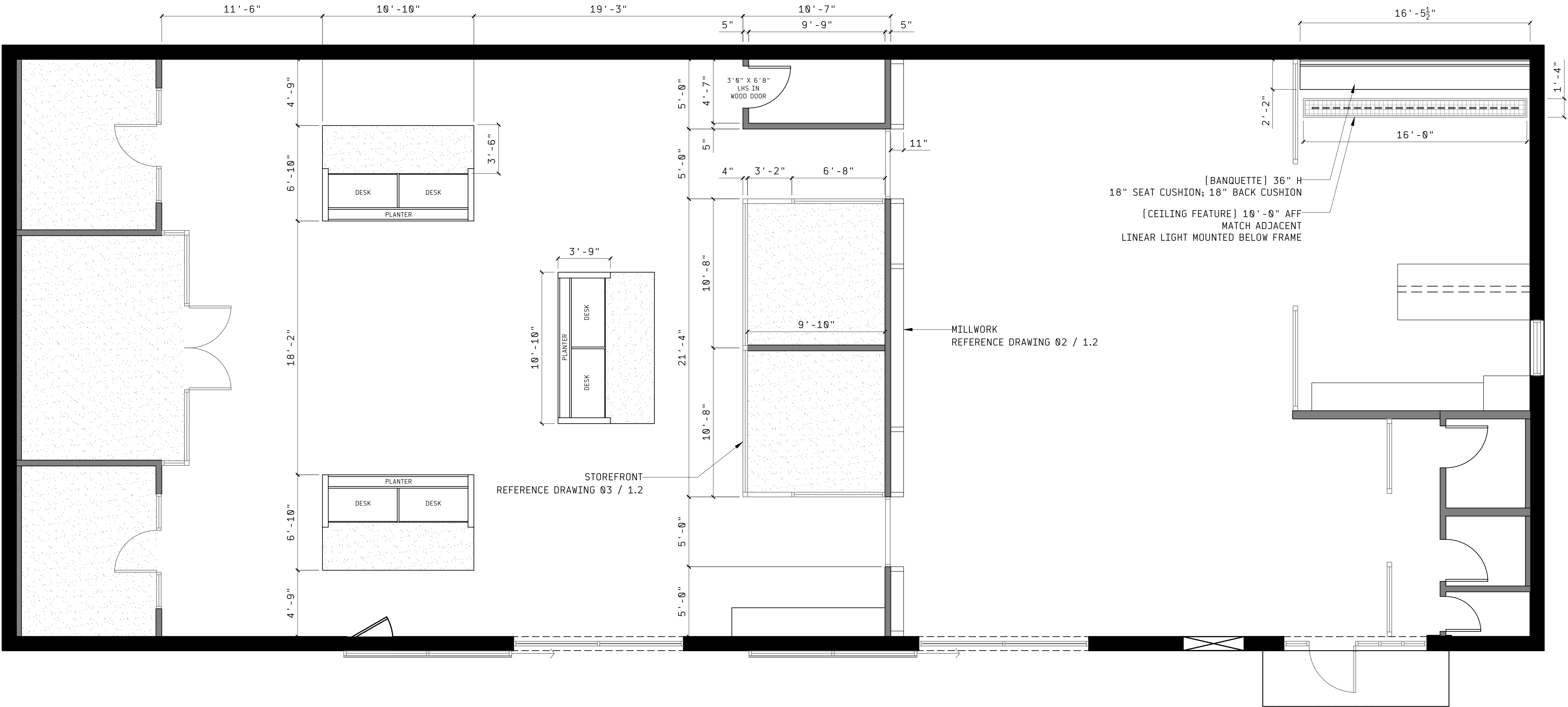
DATE:
04/04/2025

SCALE:
AS NOTED

PAPER SIZE:
ARCH D-24"X36"

SHEET NUMBER:

1.1



01 FLOOR PLAN

SCALE: 1/4"=1' - 0"

FLOOR PLAN LEGEND		
KEY	DESCRIPTION	COMMENT
	EXTERIOR WALL	-
	INTERIOR WALL	10' - 0"H
	STOREFRONT	10' - 0"H
	CARPET TILE	REFER TO SAMPLE
	WELDED WIRE	10' - 0"AFF

GENERAL NOTES:
-

REVISION NUMBER: 1

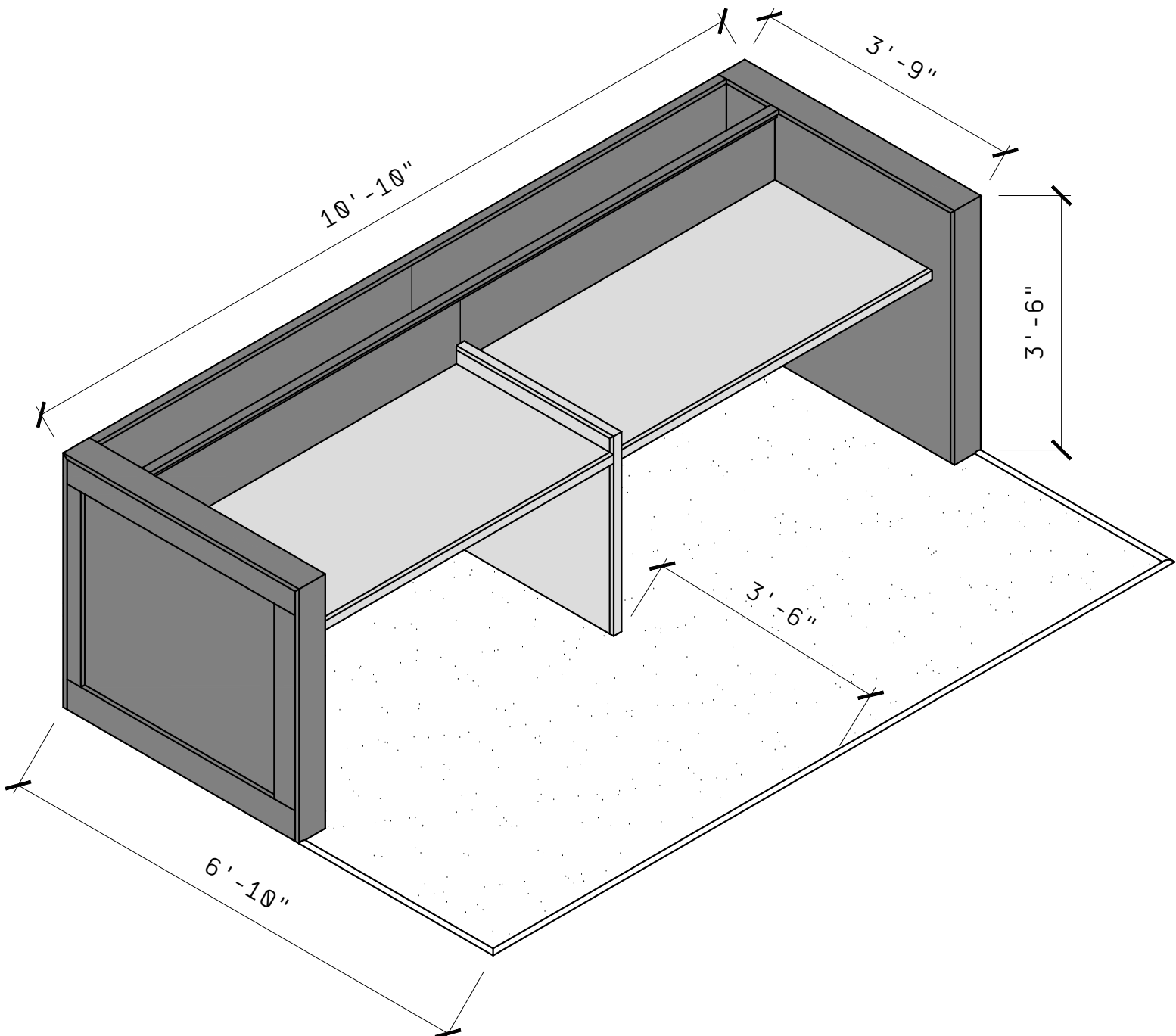
PROJECT LOCATION:

702 W COMMERCE ST,
DALLAS, TX 75208

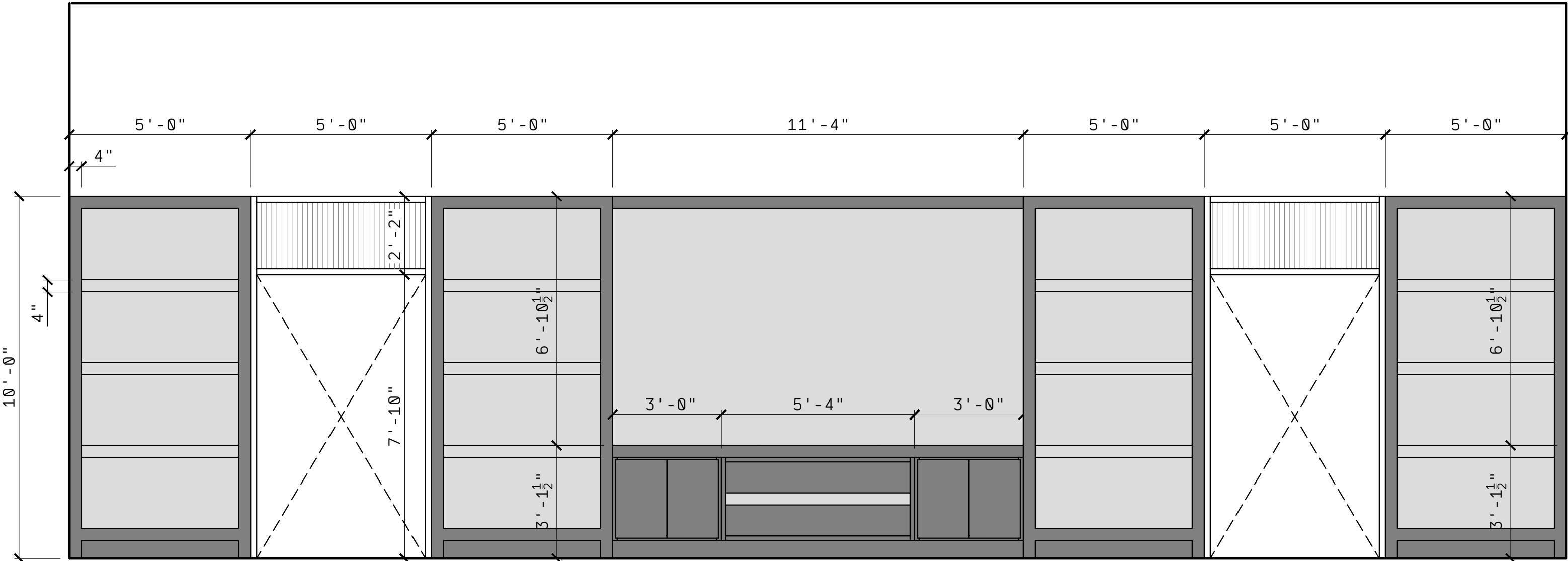
CONTRACTOR:
FORTY-FOUR CONSTRUCTION

CONTACT:
RYAN CHANEY
(972) 741-9096

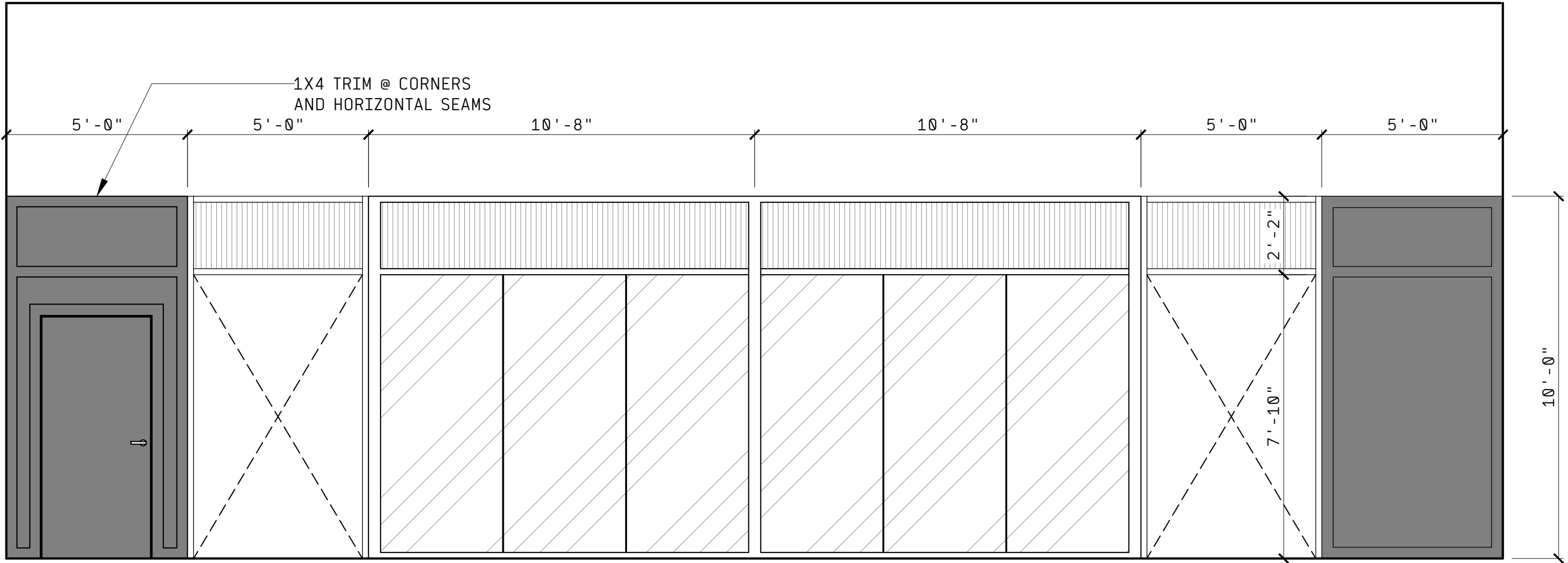
DATE: 04/04/2025	SHEET NUMBER: 1.2
SCALE: AS NOTED	
PAPER SIZE: ARCH D-24"X36"	



04 DESK ISOMETRIC PERSPECTIVE
SCALE: 1/2"=1' -0"



02 MILLWORK ELEVATION
SCALE: 3/8"=1' -0"



03 OFFICE ELEVATION
SCALE: 3/8"=1' -0"

MATERIAL LEGEND		
KEY	MATERIAL	FINISH
	BIRCH	IRON ORE
	WHITE OAK	CLEAR COAT
	CORRUGATED PERFORATED STEEL	CLEAR COAT
	1/2" TEMPERED GLASS	N/A
	TUBE STEEL	CLEAR COAT
	CARPET TILE	REFER TO SAMPLE