



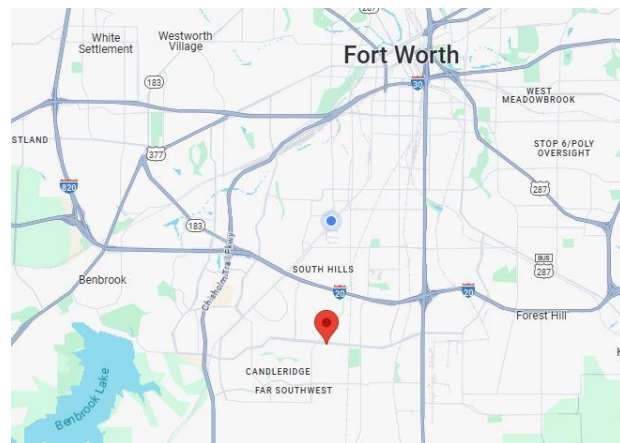
# FOR LEASE OR SALE

## PROPERTY OVERVIEW

- Call for Price
- Square Footage: 6,000 SF
- Medical Office
- Completely Renovated 2022
- 10 Exam Rooms
- 4 Restrooms
- 2 Large Nurses' Stations
- PT Facility in Rear (+/- 1,500 SF)
- Lead-lined X-Ray Room
- Ample Parking - 4.5/1,000

## GENERAL INFORMATION

- Within 5 miles of the SW Medical District
- Within 10 miles of Fort Worth's Downtown Medical District
- Situated between Chisholm Trail Parkway and I-35W just south of I-20



**3132 ALTAMESA BLVD.**

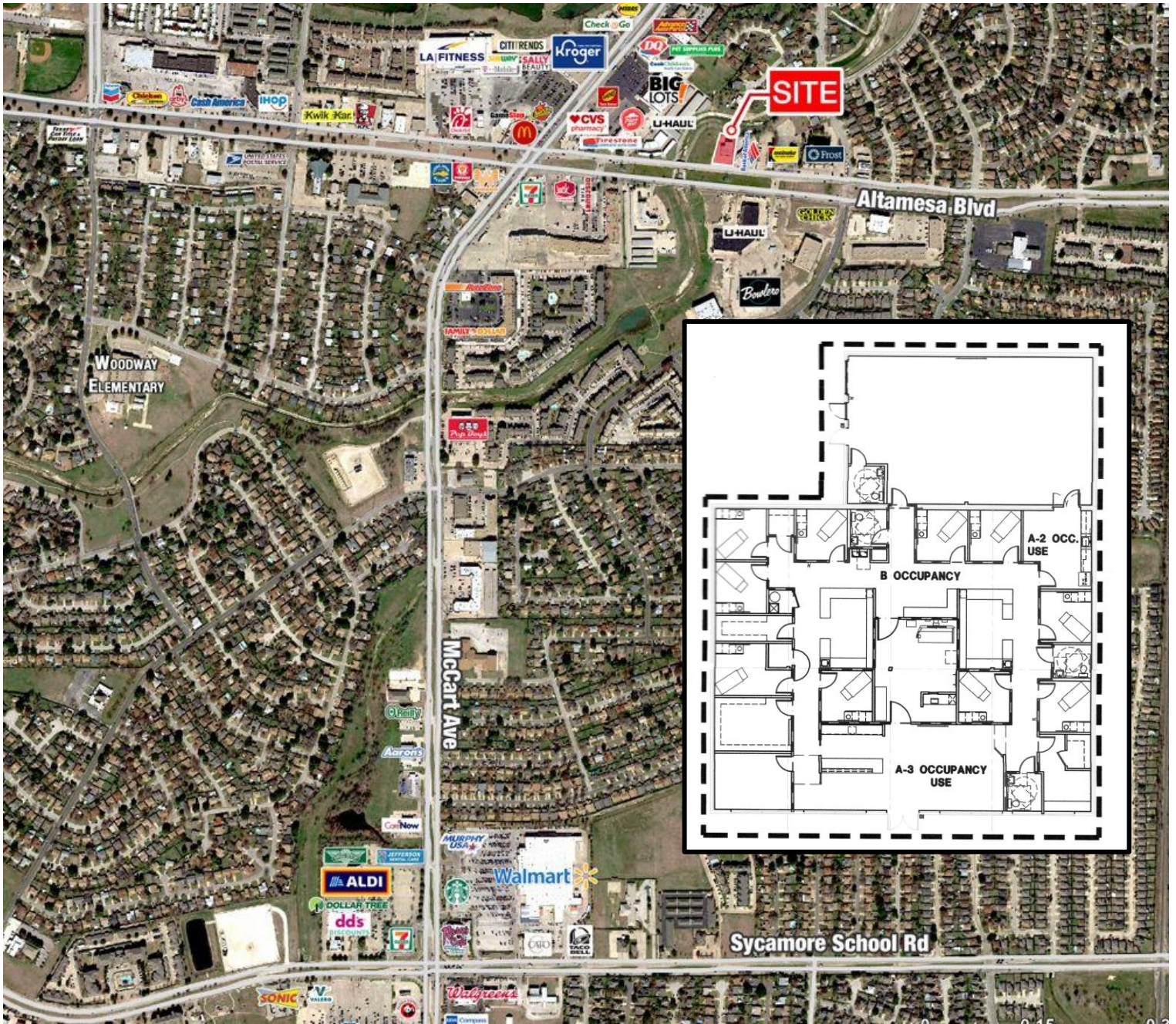
Fort Worth, Texas 76133



WORTH  
COMMERCIAL  
REAL ESTATE

## LEASE/SALE INFORMATION

Hayden Hyde  
817-905-1634  
hayden.hyde@worthcre.net



**3132 ALTAMESA BLVD.**

Fort Worth, Texas 76133



WORTH  
COMMERCIAL  
REAL ESTATE

**LEASE/SALE INFORMATION**

Hayden Hyde  
817-905-1634

hayden.hyde@worthcre.net