

# For lease

6190 Regency Parkway  
Suite 300, Norcross, GA



**Building size** 58,733 s.f.

**Available size** 12,029 s.f.

**Office size** 5,199 s.f.

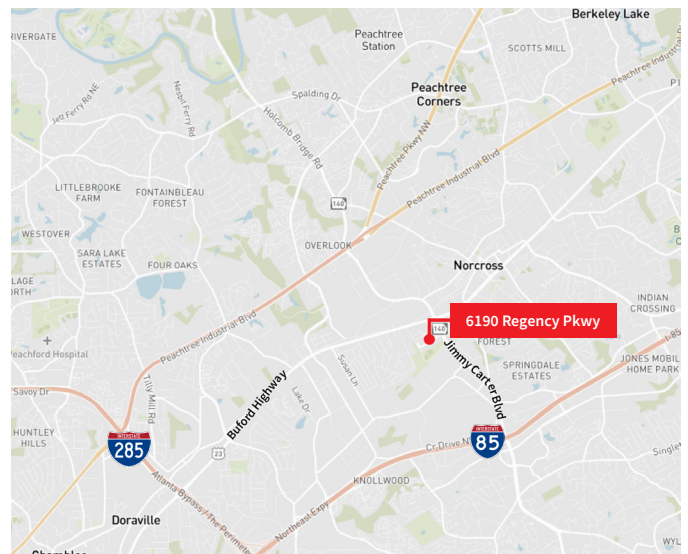
**Clear height** 18'

**Column spacing** 35' x 40'

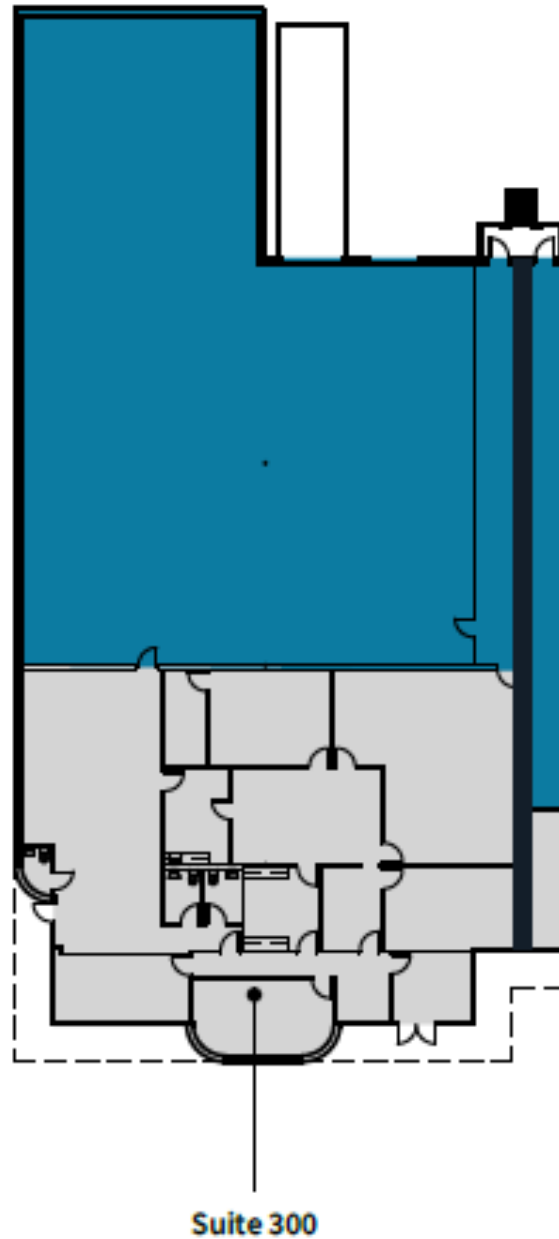
**Dock-high door** 1

**Drive-in door** 1

**Truck court depth** 100'



# 6190 Regency Parkway, Suite 300, Norcross, GA



**Reed Davis, SIOR**  
Executive Managing Director  
reed.davis@jll.com  
+1 404 995 2227

**Hannah Dillard**  
Associate  
hannah.dillard@jll.com  
+1 404 995 2250



**RICHLAND**  
CAPITAL HOLDINGS