

1055 EAST 2100 SOUTH

1055 East 2100 South, Salt Lake City, UT
84106



Investment Realty
ADVISORS

ALLISON LARSEN

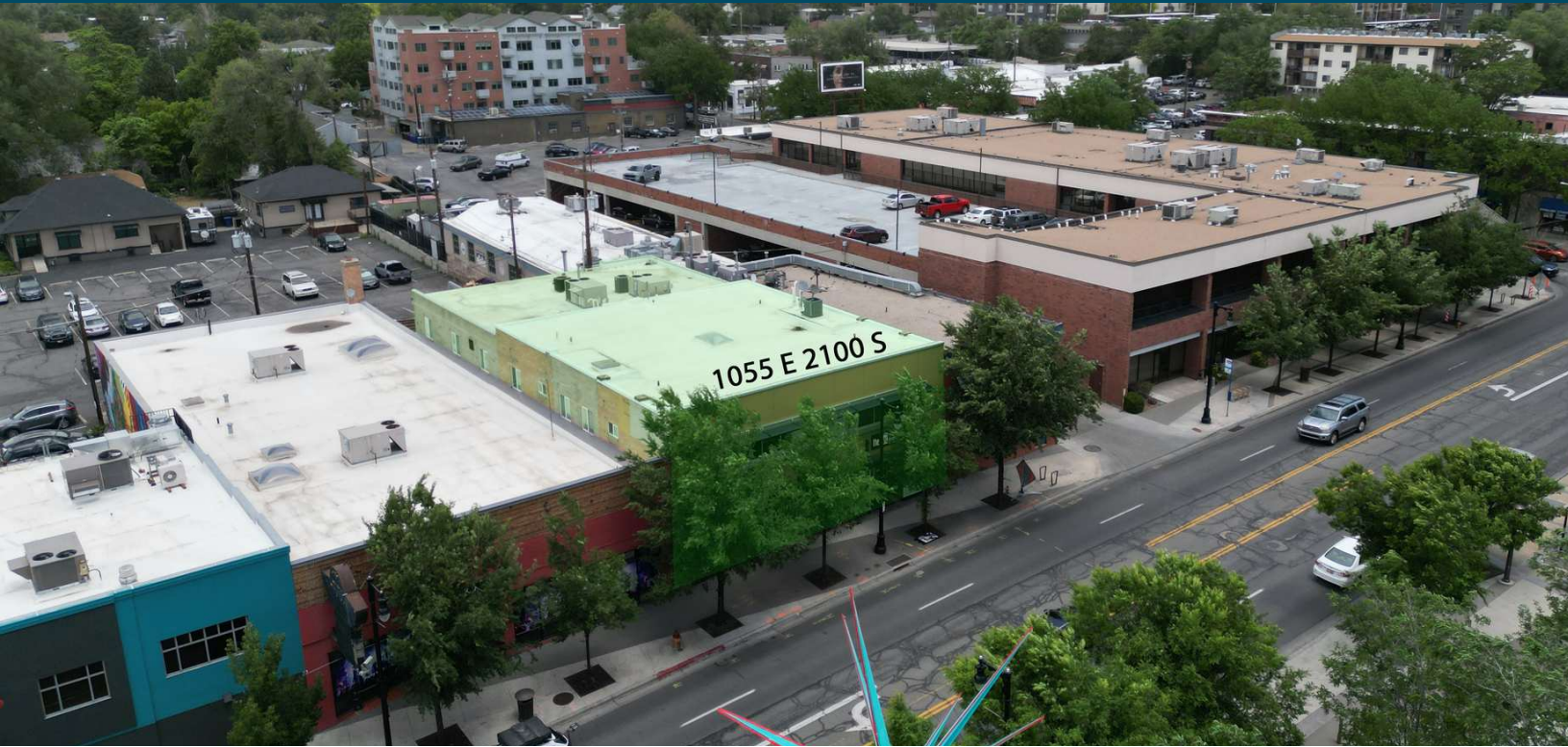
Vice President of Commercial Leasing
385.685.4844
allison@iraut.com

ELLIOT ABEL

Associate Broker
435.485.7070
elliot@iraut.com

1,160 SF of Office Space Available

PROPERTY SUMMARY



PROPERTY DESCRIPTION

This office building is planted directly on the most famous intersection in Sugar House. Located on 1055 East and 2100 South, this office is a high traffic, highly visible, highly walkable, prime location. Located within the Sugar House City Center, this site is within .25 miles of Wasatch Brew Pub, Smiths, Smash Burger, Wells Fargo, Buffalo Wild Wings, and many more Sugar House delicacies. Great location for professional and private office.

AVAILABLE UNITS

Unit 201: 1,160 SF | \$2,800/Month
5 Rooms | 3 Private Offices | Open Conference Area
Available Now

OFFERING SUMMARY

Lease Rate:	\$28.97 SF/YR
Lease Type	FSG
Available Units:	1
Unit SF:	1,160 SF
Total Building SF:	5,486 SF
Lot Size:	0.51
Parking Ratio:	3.5/1,000
ADA Parking Stalls:	2
Total Parking Stalls:	55
AADT:	25,112
Lease Term:	1-5+
Available Date:	Now

ALLISON LARSEN

Vice President of Commercial Leasing
385.685.4844
allison@iraut.com

ELLIOT ABEL

Associate Broker
435.485.7070
elliott@iraut.com

Investment Realty Advisors
411 W 7200 S, Suite 201, Midvale, UT 84047

1055 EAST 2100 SOUTH, SALT LAKE CITY, UT 84106

SITE & AVAILABILITY



ALLISON LARSEN
Vice President of Commercial Leasing
385.685.4844
allison@iraut.com

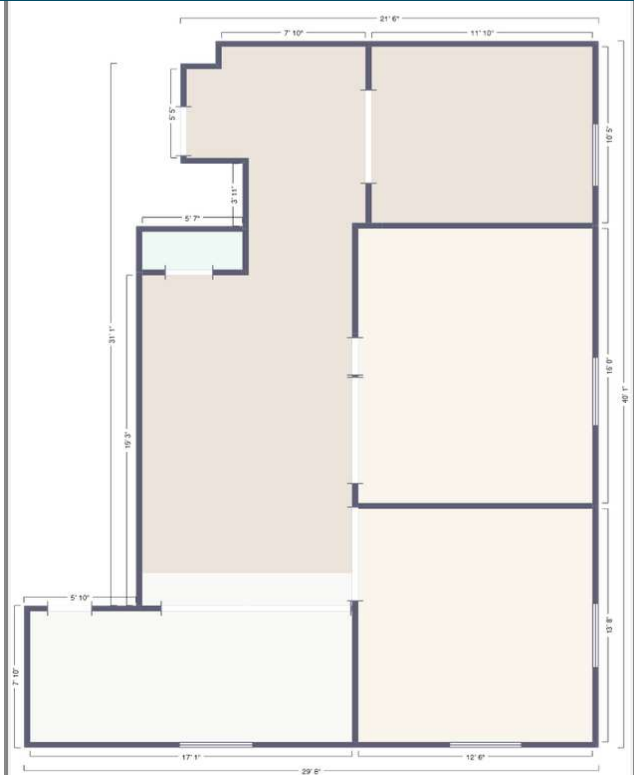
ELLIOT ABEL
Associate Broker
435.485.7070
elliott@iraut.com

Investment Realty Advisors
411 W 7200 S, Suite 201, Midvale, UT 84047

1055 EAST 2100 SOUTH, SALT LAKE CITY, UT 84106

SUITE 201

1,160 SQUARE FEET



ALLISON LARSEN
Vice President of Commercial Leasing
385.685.4844
allison@iraut.com

ELLIOT ABEL
Associate Broker
435.485.7070
elliott@iraut.com

Investment Realty Advisors
411 W 7200 S, Suite 201, Midvale, UT 84047

LOCATION MAP



Google

Imagery ©2025 Airbus, Maxar Technologies, USDA/FPAC/GEO

ALLISON LARSEN
Vice President of Commercial Leasing
385.685.4844
allison@iraut.com

ELLIOT ABEL
Associate Broker
435.485.7070
elliott@iraut.com

Investment Realty Advisors
411 W 7200 S, Suite 201, Midvale, UT 84047