



## PRIME DEVELOPMENT SITE FOR SALE

PRIME DEVELOPMENT SITE FOR SALE | 3023 NORTH YORK AVENUE, REPUBLIC, MO 65619

- 10 Acres near Amazon's new 1.3M SF Distribution Center
- Located across the street from 23,000 SF Iron Grain Retail Development
- Easy access to James River Freeway and I-44
- 1.5B in ongoing investment in the area thru 2025

EST. 1909

2225 S. Blackman Road  
Springfield, MO 65809  
417.881.0600  
[rbmurray.com](http://rbmurray.com)

Ryan Murray, SIOR, CCIM, LEED AP, CPM  
417.881.0600  
[ryan@rbmurray.com](mailto:ryan@rbmurray.com)

**R.B. | MURRAY COMPANY**  
SINCE 1909  
COMMERCIAL & INDUSTRIAL REAL ESTATE

**Executive Summary****PROPERTY SUMMARY**

<b>Sale Price:</b>	\$1,200,000
<b>Taxes:</b>	\$957.61 (2025)
<b>Lot Size:</b>	10.0 Acres
<b>Zoning:</b>	AG - Agriculture
<b>Utilities:</b>	Water & Sewer - City of Republic Electric - Springfield City Utilities
<b>Property Dimensions:</b>	630± FT of frontage on Sawyer 690± FT on York

The information listed above has been obtained from sources we believe to be reliable; however, we accept no responsibility for its accuracy.

**PROPERTY OVERVIEW**

Located near Amazon's new Distribution Center in Republic, this 10± Acre lot has easy access to James River Freeway and I-44. The City of Republic is seeing rapid growth with multiple developments in the works with \$1.5B in ongoing investment in the area through 2025. The property has a 1,388 SF house, but is being marketed as vacant land.

The property is also located across the street from the new Iron Grain District mixed-use development, anchored by a 23,000 SF shopping center, with a second phase of multifamily coming soon.

Contact listing agent for more information.

**PROPERTY HIGHLIGHTS**

- First time to market
- Located near Amazon's new Distribution Center
- Easy access to James River Freeway and I-44
- 1.5B in investment in the corridor between now and 2025
- Convoy of Hope World Headquarters - \$37M - 650 employees – completed October 2023
- Amazon Fulfillment Center - \$150M – 1,800 employees
- Iron Grain mixed-use development \$65M – under construction – Spring 2024
- Investment into Infrastructure:
  - \$12.5M to 5 Lane MM Highway From I-44 to James River Freeway
  - \$35M to realign MM from Amazon South to Highway 60 with a new signalized intersection at Farm Road103. This intersection will see AM and PM peaks of close to 60k cars a day
- City investing \$100M into additional capacity of water and wastewater systems to facilitate further growth and development



**1.5 billion being invested in the area between Republic and James River Freeway/Springfield between now and 2025.**

Developments over last three years and current developments

1. Convoy of Hope World Headquarters - \$37M - 650 employees – completed October 2023
2. Amazon Fulfillment Center - \$150M – 1,800 employees
3. Red Monkey Expansion - \$10M - 100 additional employees - 400 overall
4. McClane Expansion - \$10M – 100 additional employees
5. Roi Mercy - \$7M – 90 additional employees
6. Lew's - \$7M – 85 additional employees
7. Iron Grain mixed-use development \$65M – under construction – Spring 2024 – across from Amazon
8. Stone Creek Falls – mixed-use development - \$350M – 1,320 residential units, 5 commercial lots w/ access to US 60 & MM expansion
9. Wilson's Valley – Stu Stenger Development - \$50M, 145 Single Family, 270 Multi-Family, Commercial Units – 4 commercial lots with 5 acres of commercial frontage. Approved by City and ready for permit issuance
10. Retail Food - Andy's, Popeye's, Culvers, and Whataburger
11. Great Escapes Brewery \$4M investment to a retail and distribution center located on Highway 60

12 New Active Subdivisions. Approximately 1200 approved single family lots to be built and 2500 multi-family units approved through zoning. Residential permits have increased approximately 25% year over year for the last 3 years.

Investment into Infrastructure

1. \$12.5M to 5 Lane MM Highway From I-44 to James River
2. \$35M to realign MM from Amazon South to Highway 60 with a new signalized intersection at Farm Road 103. This intersection will see AM and PM peaks of close to 60k cars a day
3. \$16M to 6 lane Highway 60 from the intersection above toward Springfield and James River Freeway
4. \$2.5M to improve the interchange at I-44 and MM
5. City investing \$100M into additional capacity of water and wastewater systems to facilitate further growth and development
6. City Investing \$20M into a sports mega-plex on 136 acres near 60 and MM. This facility will have 9-10 baseball/softball fields and 8 soccer fields
7. City investing \$10M into expansion of the regional aquatics center - 60,000 patrons annually

LAND FOR SALE

**PRIME DEVELOPMENT SITE FOR SALE**  
**3023 NORTH YORK AVENUE, REPUBLIC, MO 65619**

**100 Years**  
SINCE 1909

Additional Photos



Ryan Murray, SIOR, CCIM, LEED AP, CPM | 417.881.0600 | ryan@rbmurray.com  
2225 S. Blackman Road | Springfield, MO 65809 | 417.881.0600

**R.B. | MURRAY COMPANY**  
COMMERCIAL & INDUSTRIAL REAL ESTATE



LAND FOR SALE

**PRIME DEVELOPMENT SITE FOR SALE**  
**3023 NORTH YORK AVENUE, REPUBLIC, MO 65619**

**100 Years**  
SINCE 1909

Additional Photos



Ryan Murray, SIOR, CCIM, LEED AP, CPM | 417.881.0600 | ryan@rbmurray.com  
2225 S. Blackman Road | Springfield, MO 65809 | 417.881.0600

**R.B. | MURRAY COMPANY**  
COMMERCIAL & INDUSTRIAL REAL ESTATE



LAND FOR SALE

**PRIME DEVELOPMENT SITE FOR SALE**  
**3023 NORTH YORK AVENUE, REPUBLIC, MO 65619**

**100 Years**  
SINCE 1909

Additional Photos

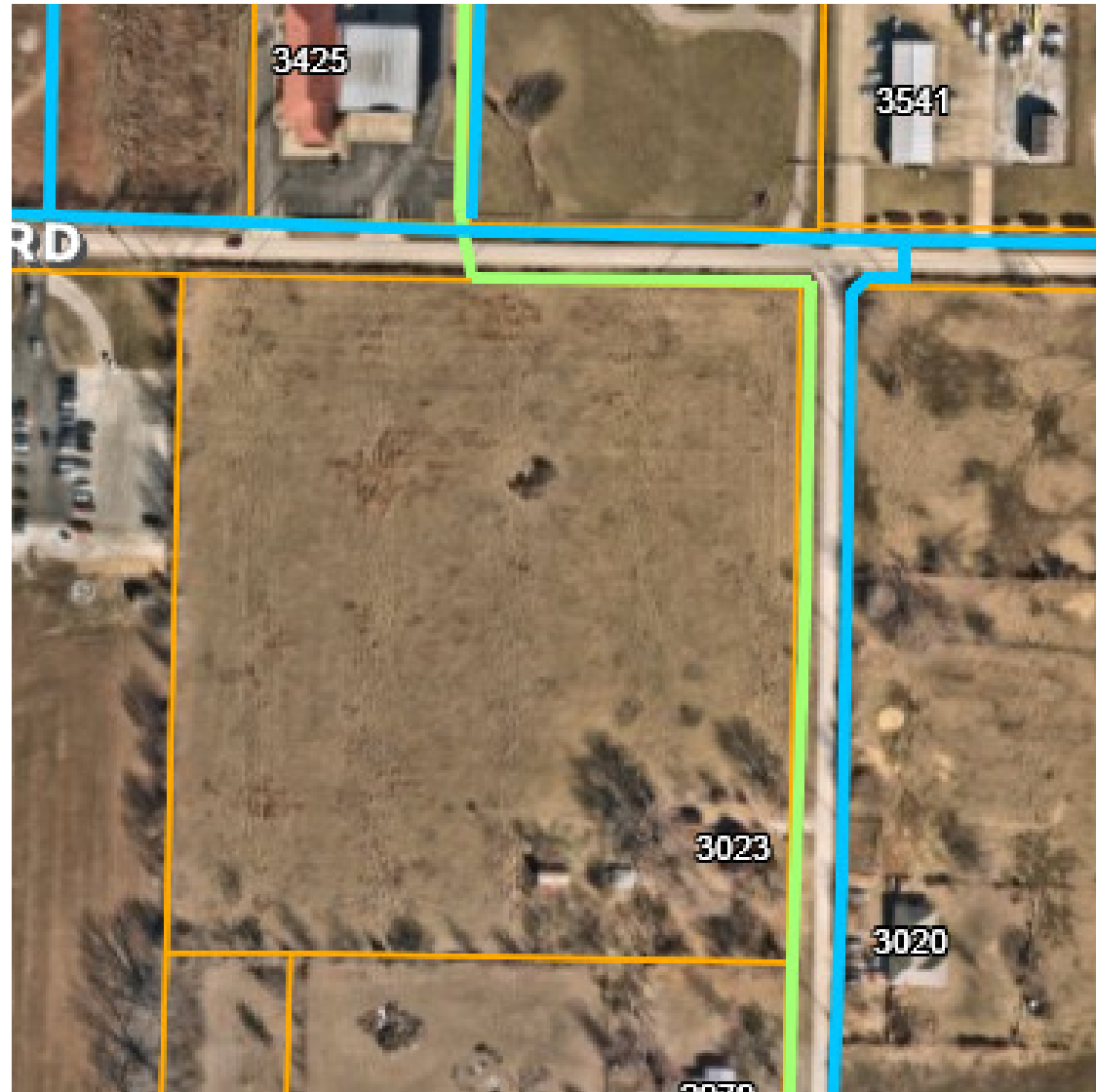


LAND FOR SALE

**PRIME DEVELOPMENT SITE FOR SALE**  
**3023 NORTH YORK AVENUE, REPUBLIC, MO 65619**



Water & Sewer Map

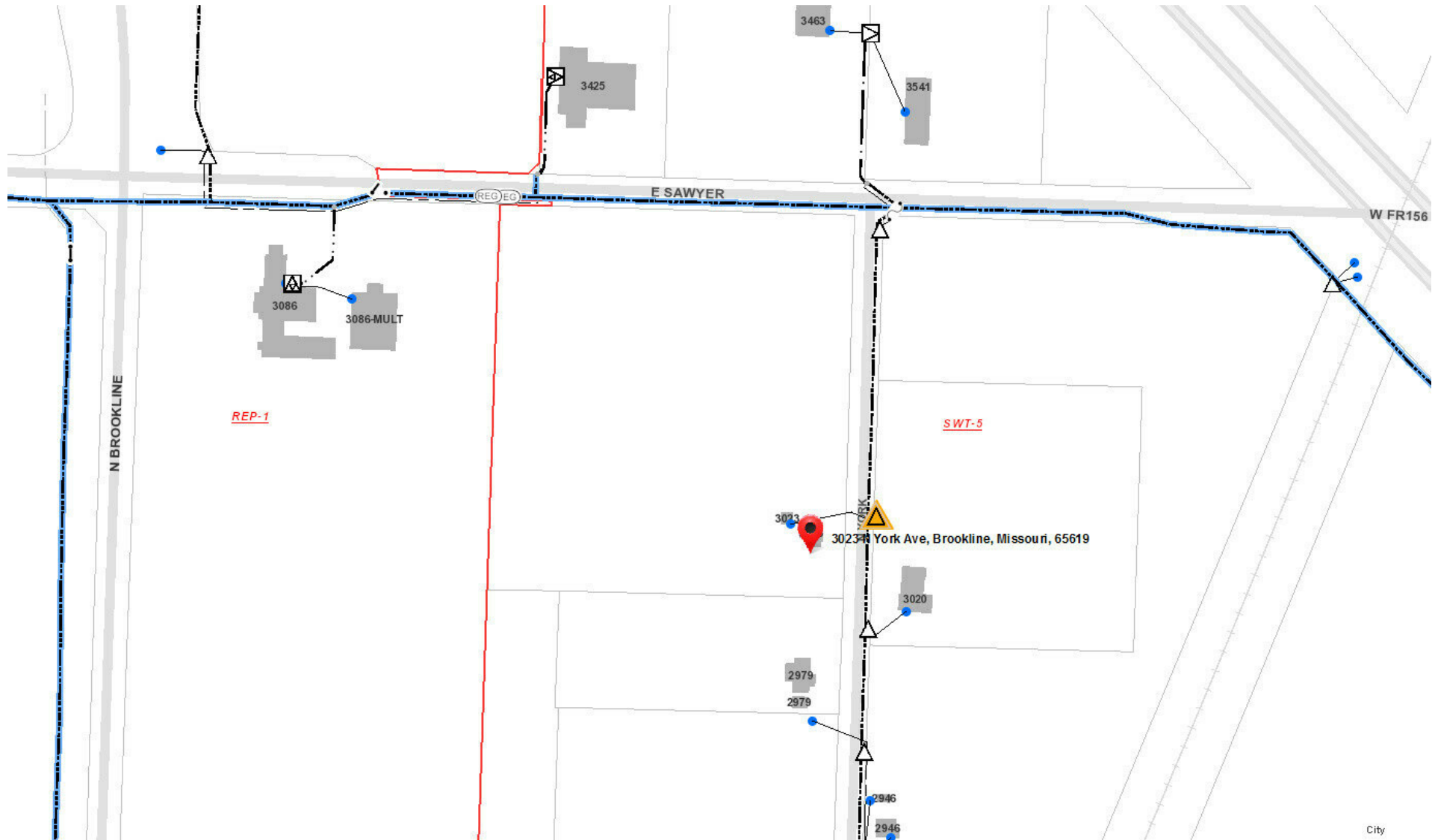


LAND FOR SALE

**PRIME DEVELOPMENT SITE FOR SALE**  
**3023 NORTH YORK AVENUE, REPUBLIC, MO 65619**



Electric Map



Ryan Murray, SIOR, CCIM, LEED AP, CPM | 417.881.0600 | ryan@rbmurray.com  
2225 S. Blackman Road | Springfield, MO 65809 | 417.881.0600

**R.B. | MURRAY COMPANY**  
COMMERCIAL & INDUSTRIAL REAL ESTATE

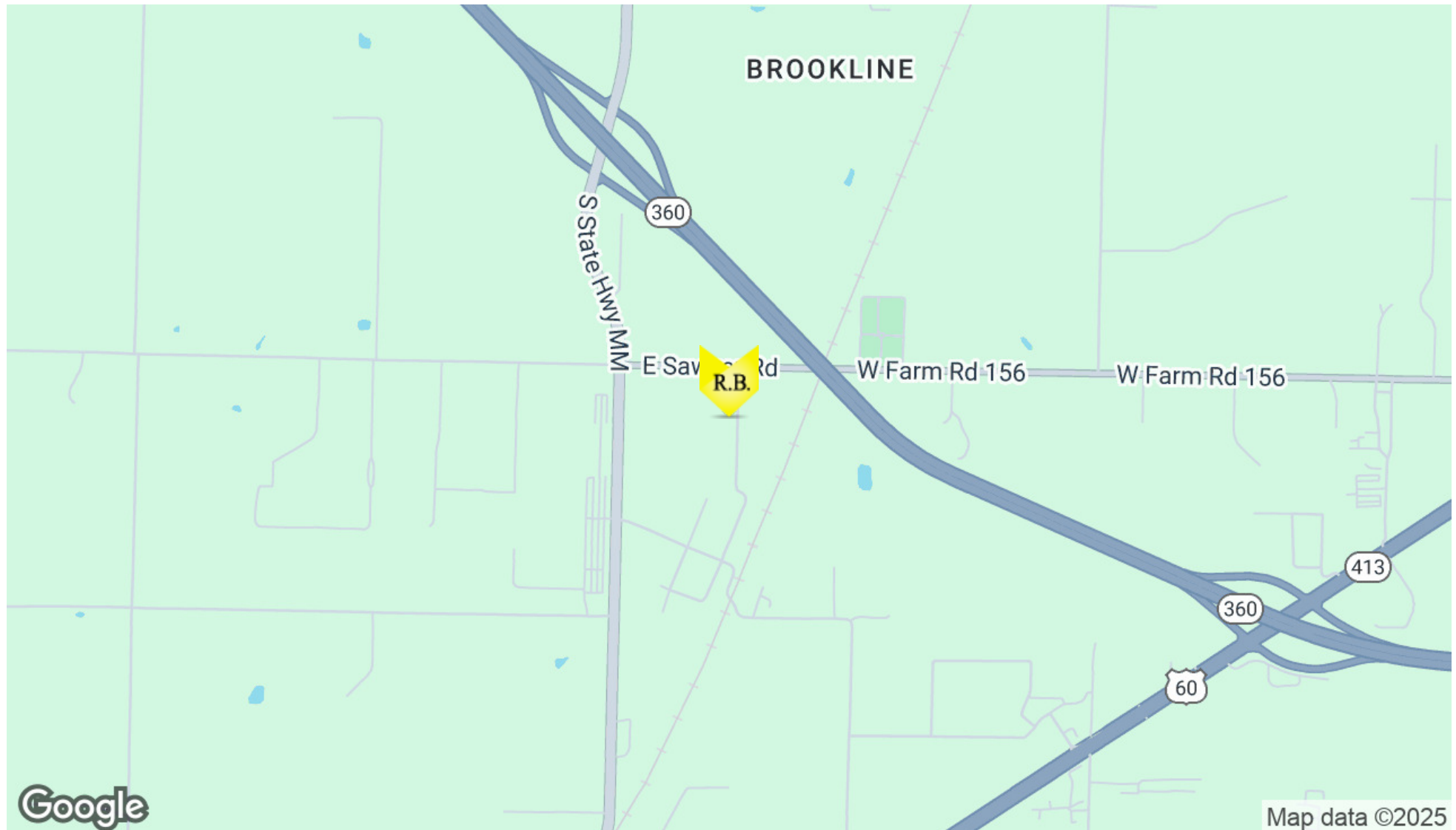


LAND FOR SALE

**PRIME DEVELOPMENT SITE FOR SALE**  
**3023 NORTH YORK AVENUE, REPUBLIC, MO 65619**



Location Map



# PRIME DEVELOPMENT SITE FOR SALE

## 3023 NORTH YORK AVENUE, REPUBLIC, MO 65619

### Demographics Map & Report

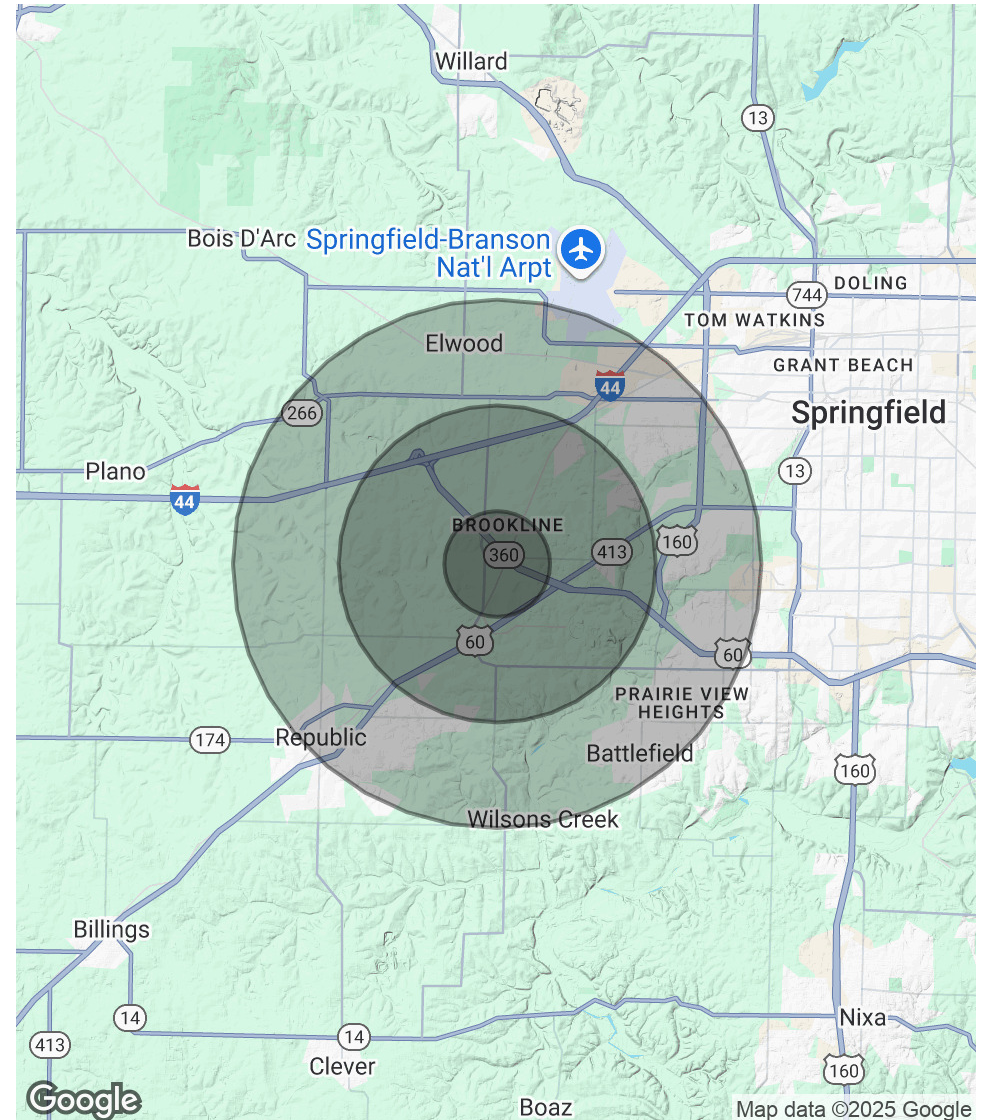
#### POPULATION

	1 MILE	3 MILES	5 MILES
Total Population	863	9,210	52,267
Average Age	33.1	32.1	37.6
Average Age (Male)	33.4	32.3	36.4
Average Age (Female)	29.5	30.5	39.0

#### HOUSEHOLDS & INCOME

	1 MILE	3 MILES	5 MILES
Total Households	323	3,970	22,826
# of Persons per HH	2.7	2.3	2.3
Average HH Income	\$92,709	\$69,913	\$66,347
Average House Value	\$171,258	\$157,724	\$149,453

2020 American Community Survey (ACS)





LAND FOR SALE

## PRIME DEVELOPMENT SITE FOR SALE 3023 NORTH YORK AVENUE, REPUBLIC, MO 65619



### Advisor Bio

RYAN MURRAY, SIOR, CCIM, LEED AP, CPM

#### Chief Executive Officer



2225 S. Blackman Road  
Springfield, MO 65809

T 417.881.0600  
ryan@rbmurray.com  
MO #2007030465

#### Professional Background

Ryan Murray joined R.B. Murray Company after graduating with Distinction Honors with a B.A. in Business Administration, and obtaining the Leeds School of Business Real Estate Certificate, from the University of Colorado. He was later named Vice President, specializing in the sales & leasing of office, retail, and industrial properties. Mr. Murray also oversees R.B. Murray Company's property management & receivership divisions.

Recently Mr. Murray obtained the Society of Industrial and Office Realtors (SIOR) designation, a professional achievement for highly qualified commercial real estate practitioners with a strong transactional history in brokerage. SIOR individual members are the best in the commercial real estate industry, and the top-producers in their field. SIOR members are in more than 630 cities and 33 countries worldwide, and are recognized as top producing professionals – closing on average more than 30 transactions per year, and have met stringent production, education, and ethical requirements.

Mr. Murray has achieved the Certified Commercial Investment Member Designation (CCIM), and was one of the state's first commercial real estate professionals to achieve Leadership in Energy and Environmental Design Accredited Professional (LEED AP) status. As a Certified Commercial Investment Member (CCIM) Mr. Murray is a recognized expert in the disciplines of commercial and investment real estate, and as a LEED AP Mr. Murray has demonstrated a thorough understanding of green building practices and principles and the LEED Rating System.

Mr. Murray has also earned Certified Property Manager® (CPM®) designation from the Institute of Real Estate Management (IREM®), an affiliate of the National Association of REALTORS®. The CPM® designation is awarded to real estate managers who have met the Institute's rigorous requirements in the areas of professional education, examination and experience. CPM® Members must also abide by a rigorous Code of Professional Ethics that is strictly enforced by the Institute.

Mr. Murray currently serves as a director on the OTC Foundation Board and the Rotary Club of Springfield Southeast Board, is a past member of the Board of Directors for the Make-A-Wish® Foundation of Missouri, and a graduate of the Leadership Springfield program. Mr. Murray lives in Springfield with his wife Maggie and their son & daughter.

#### Memberships & Affiliations

SIOR, CCIM, LEED AP, CPM

EST. 1909