

# WEST SEATTLE

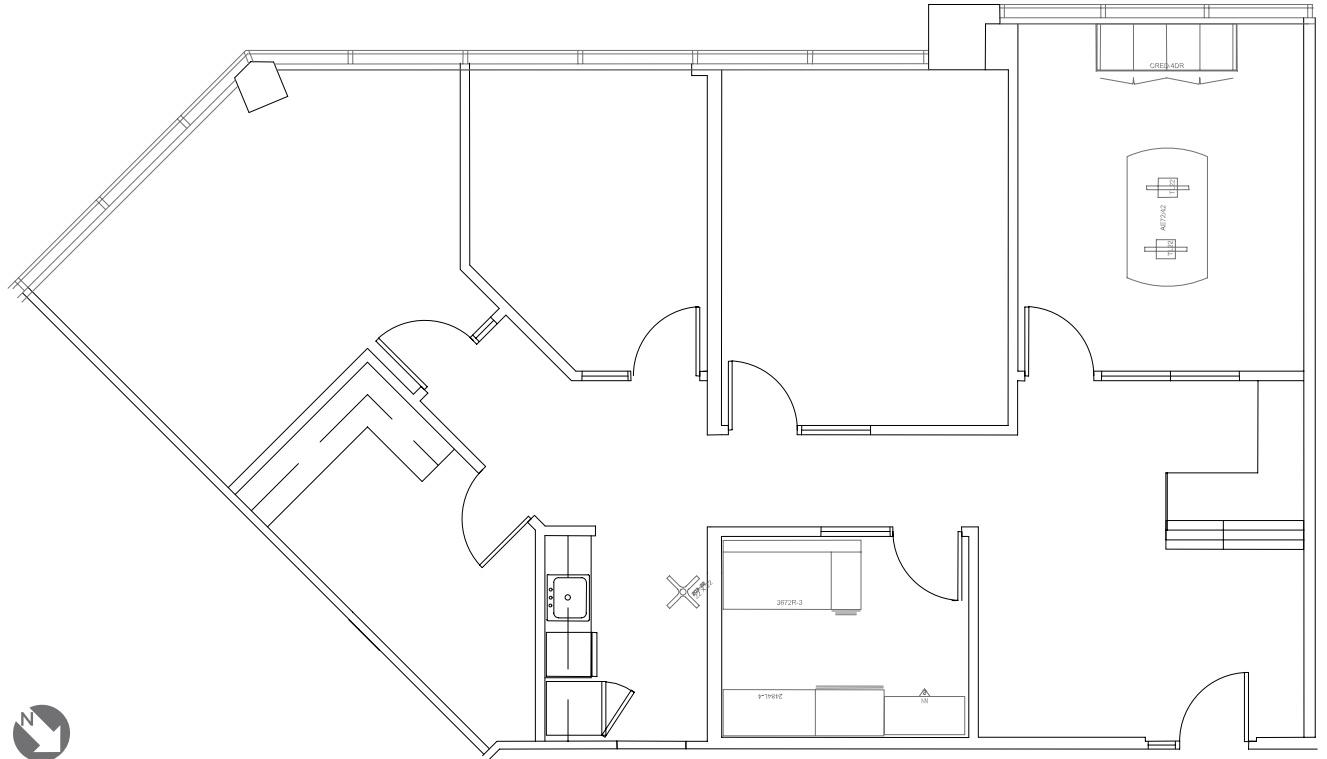
CORPORATE CENTER

# FOR SUBLEASE

4025 DELRIDGE WAY SW ★ SEATTLE, WA

FIFTH FLOOR | SUITE 570 | 1,479 RSF

The existing tenant has vacated  
and is **HIGHLY MOTIVATED!**  
Lease expires on 7/31/2025.



FOR SUBLEASE  
INFORMATION CONTACT:

BOJIDAR GABROVSKI  
P// 847.275.8474  
bgabrovski@orioncp.com

1218 Third Ave // Suite 2200  
Seattle, WA 98101  
www.orioncp.com

 **ORION**  
COMMERCIAL PARTNERS