



# OFFICE/WAREHOUSE WITH FENCED YARD

5718 W. DANNON WAY, WEST JORDAN, UT 84081

**LEASE RATE: \$0.90 PSF NNN**



## PROPERTY INFORMATION

- ✓ 8,029 SF Freespan Warehouse/Office
- ✓ (2) 12' X 14' Ground Level Doors
- ✓ Clear Height: 12' - 17'
- ✓ +/- .40 Acres Of Fenced Yard Available
- ✓ 3 Phase Power/400 Amp/240 Volt
- ✓ Zoning: M-1
- ✓ Site Size: 2.50 Acres On Fenced Lot
- ✓ Air & Power Hookups Throughout
- ✓ Easy Access To New Bingham Hwy And Mountain View Corridor

## DRIVE TIMES

Mountain View Corridor	1 Min
I-15	14 Min
I-215	12 Min
Bangerter Highway	8 Min
Point Of The Mountain	20 Min
Inland Port	15 Min

## CONTACT US

**DEREK KLOPPER**

✉ derek@cresutah.com

☎ 801.897.9264

**COLTER SMITH**

✉ colter@cresutah.com

☎ 801.755.8794

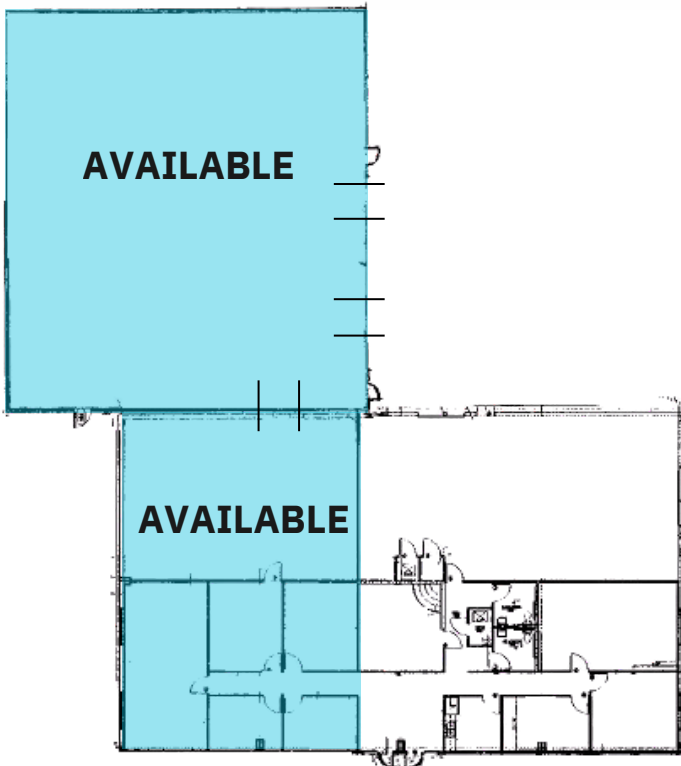
🌐 www.cresutah.com

Call Us   
**801.876.6070**



# CRES OFFICE/WAREHOUSE WITH FENCED YARD

5718 W. DANNON WAY, WEST JORDAN, UT 84081



This information is given with the understanding that all negotiations and/or real estate activity related to the property described above shall be conducted through this CRES office. The above information while not guaranteed, was obtained from sources we believe to be reliable.

## CONTACT US

**DEREK KLOPPER**

✉ [derek@cresutah.com](mailto:derek@cresutah.com) ☎ 801.897.9264

**COLTER SMITH**

✉ [colter@cresutah.com](mailto:colter@cresutah.com) ☎ 801.755.8794 🌐 [www.cresutah.com](http://www.cresutah.com)

Call Us  
**801.876.6070** ☎