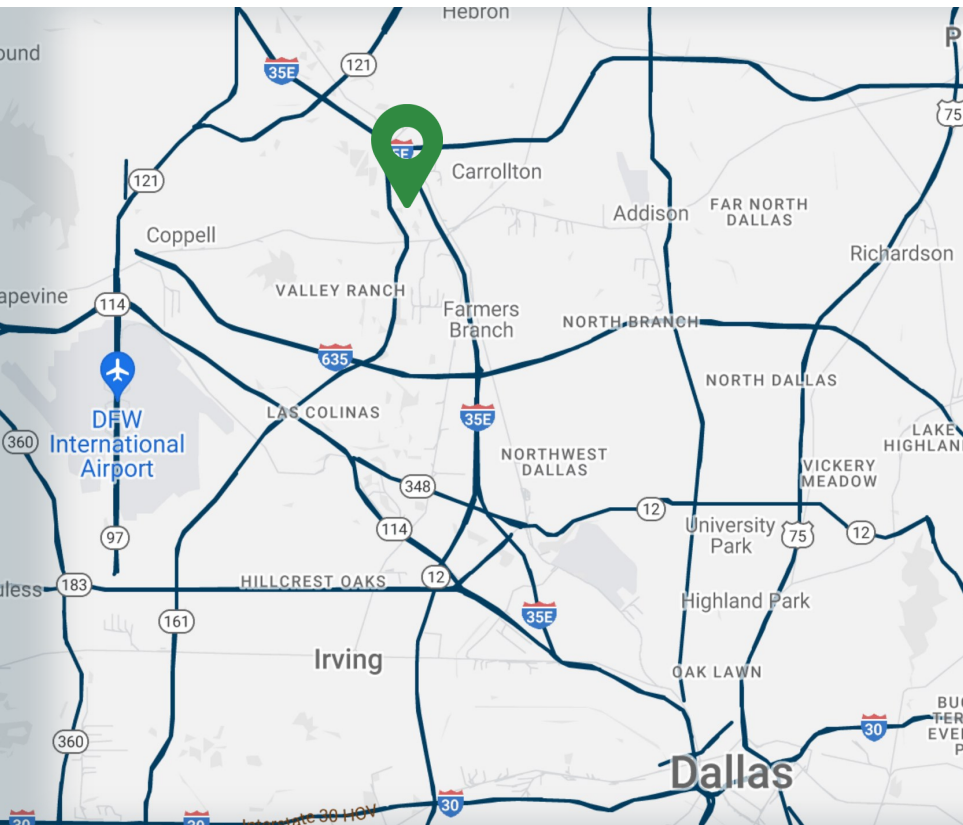


FOR LEASE
2,717 SF

1420 CENTURY DR

CARROLLTON, TEXAS 75006



SPACE HIGHLIGHTS

- TOTAL SPACE 2,717 SF
- FRONT PARKING / REAR LOAD SITE LAYOUT
- GRADE LEVEL LOADING (10'X12')
- ±14' CLEAR HEIGHT
- EXCELLENT ACCESS TO I-35E AND PGBT
- PROFESSIONALLY LEASED AND MANAGED BY ACRE PROPERTY



Moe Awad | 214.850.6030 | moe@acreproperty.com

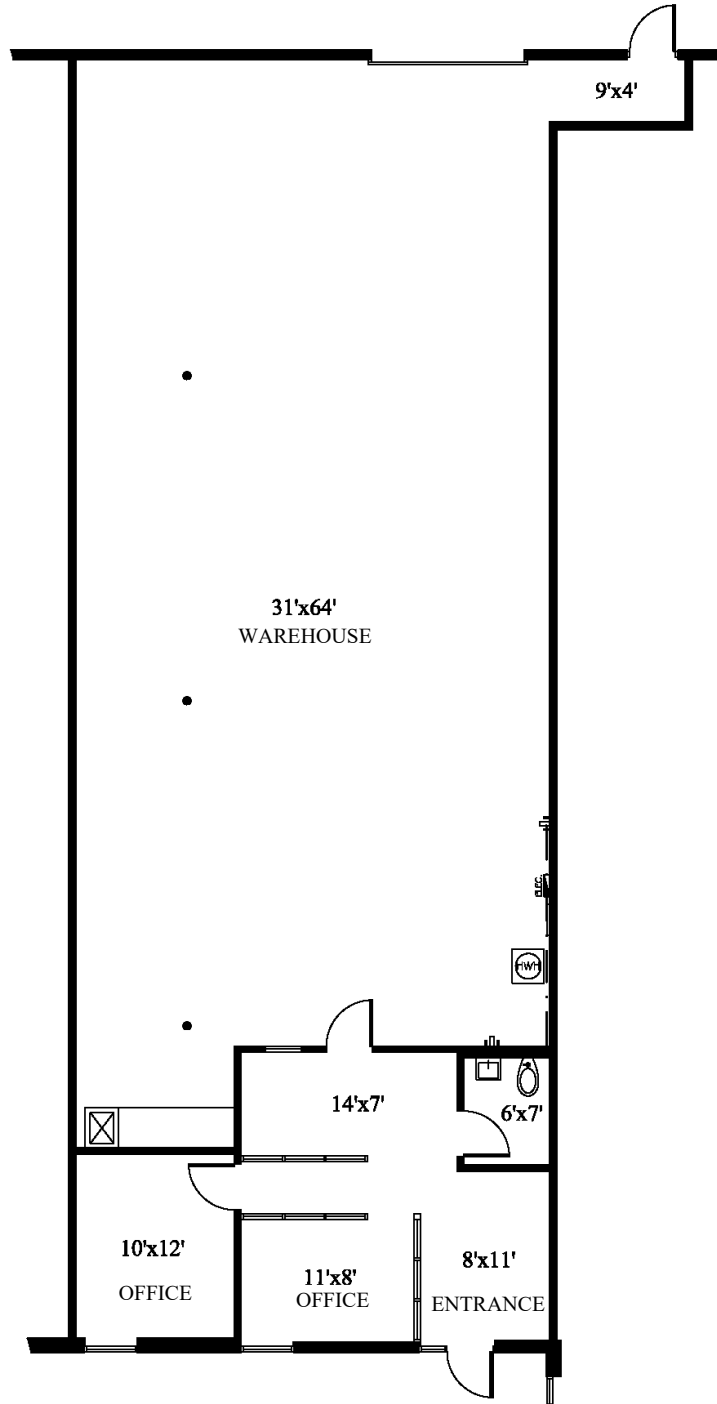
Akram Awad | 214.356.7666 | akram@acreproperty.com

1420 CENTURY DR
CARROLLTON, TEXAS 75006

FLOOR PLAN

FOR LEASE
2,717 SF

SUITE 1100



Moe Awad | 214.850.6030 | moe@acreproperty.com
Akram Awad | 214.356.7666 | akram@acreproperty.com