



# 9847 NORTH 21ST AVENUE

PHOENIX, ARIZONA 85021

+/- 6,035 Square Feet

Freestanding Industrial/Office Building (Demisable for Multi-Tenant)

Approximately 1/3 Office and 2/3 Warehouse

Large Reception Area, Private Offices, Three (3)

Restrooms, Utility Room, Storage Areas and Paint Booth

One Grade Level Overhead Door (10' x 12')

A-1 Zoning, City of Phoenix

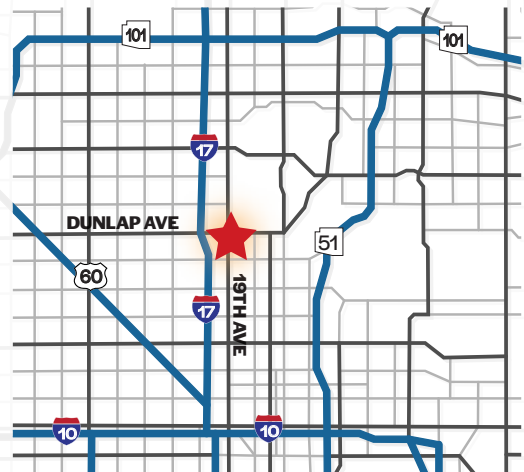
Outside Storage Yard Area

600 Amps, 3 Phase Power

Close Proximity to I-17 Freeway

Land Area: 0.31 Acres

Year Built: 1994



## Matt Harper, CCIM

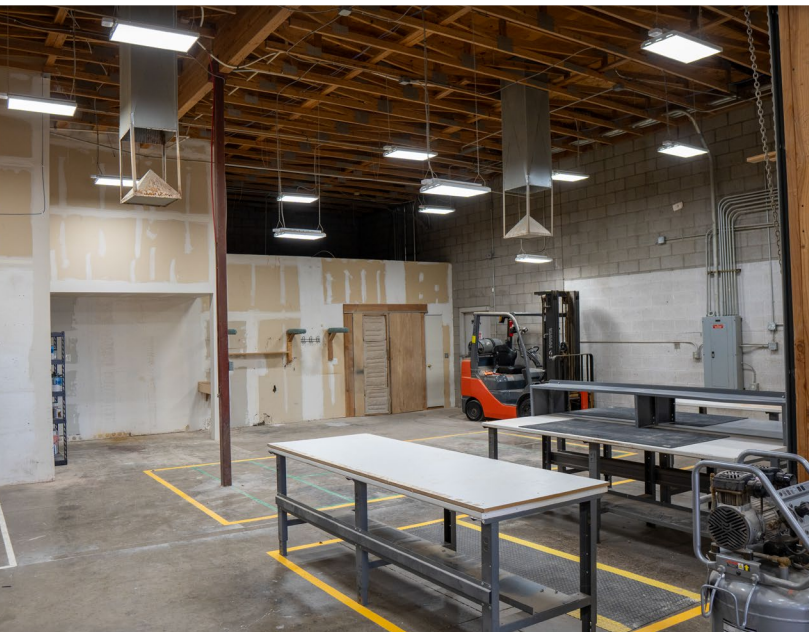
Senior Vice President

623.692.9435

matt@citywidecre.com

2122 East Highland Avenue, Suite 225 • Phoenix, Arizona 85016 • 602.313.1000 • citywidecre.com









**Matt Harper, CCIM**

Senior Vice President

623.692.9435

[matt@citywidecre.com](mailto:matt@citywidecre.com)

2122 East Highland Avenue, Suite 225 • Phoenix, Arizona 85016 • 602.313.1000 • [citywidecre.com](http://citywidecre.com)