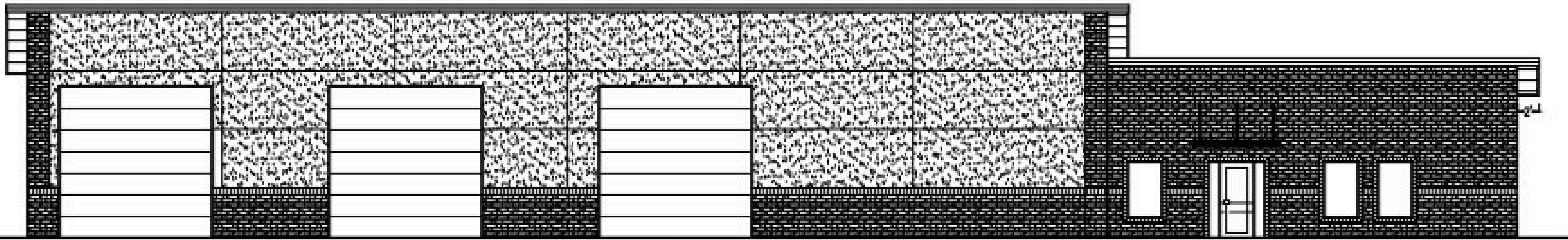
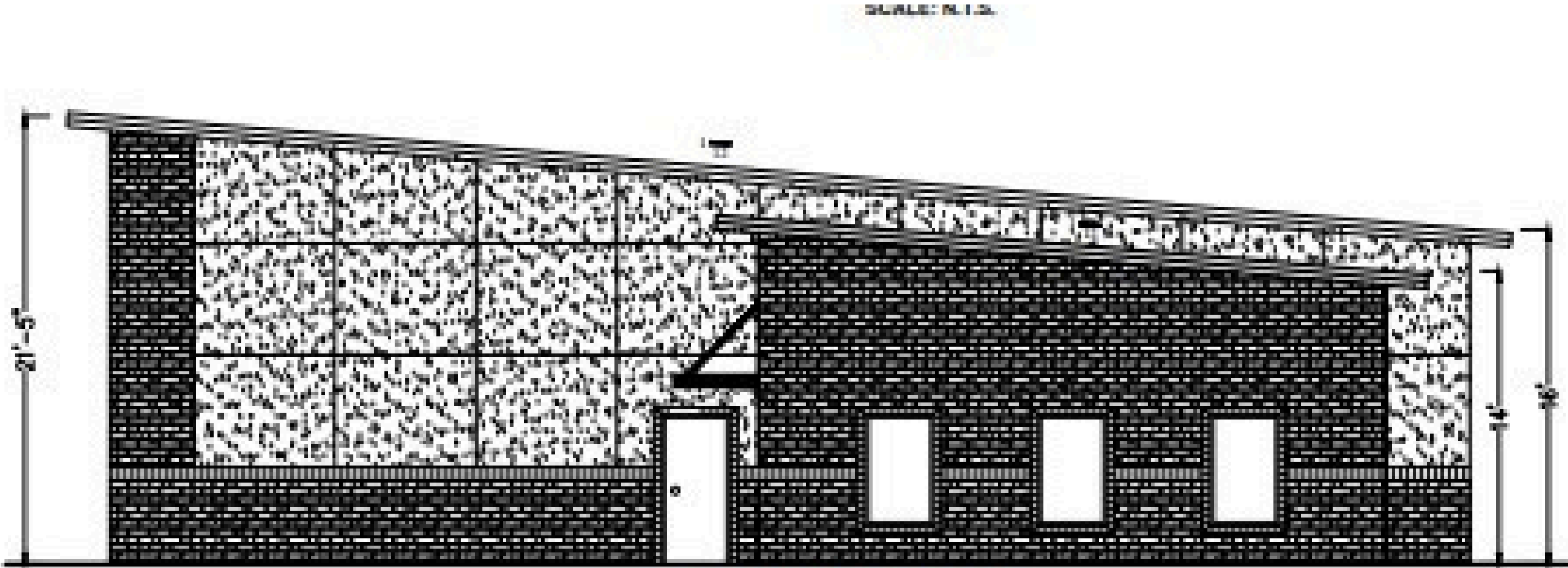


250 NE 16th St, Newcastle, OK 73065

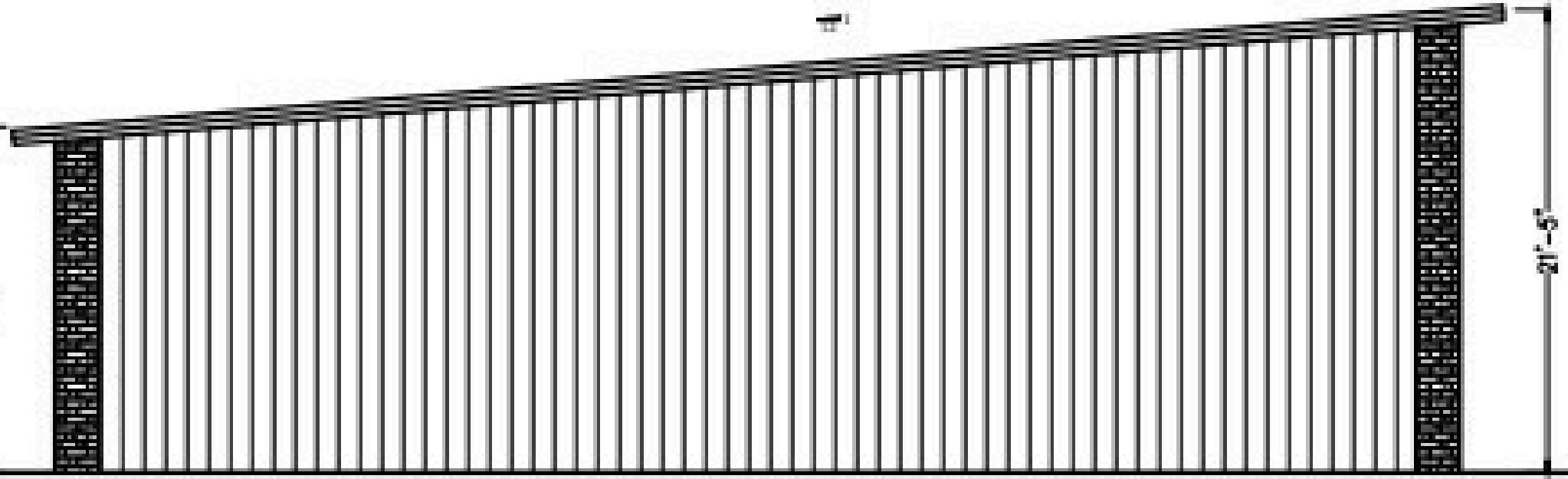
Available for Pre-Lease | Q4 '26 Delivery



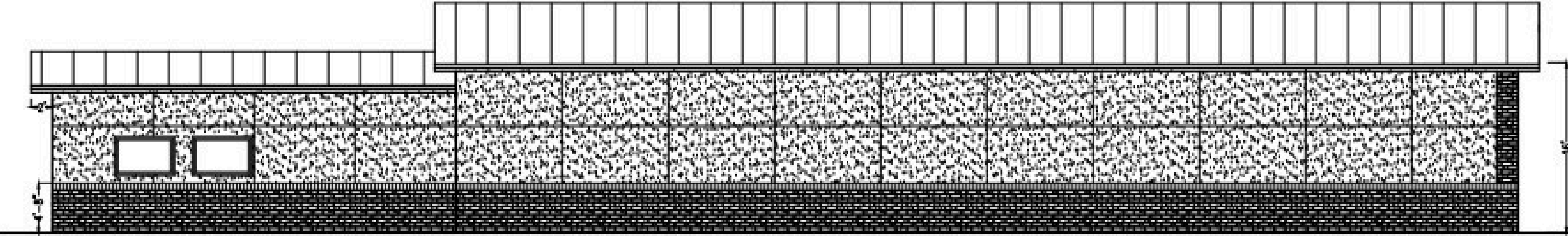
2 EAST ELEVATION
A1 SCALE: 1/8" = 1'



3 NORTH ELEVATION
A1 SCALE: 1/8" = 1'



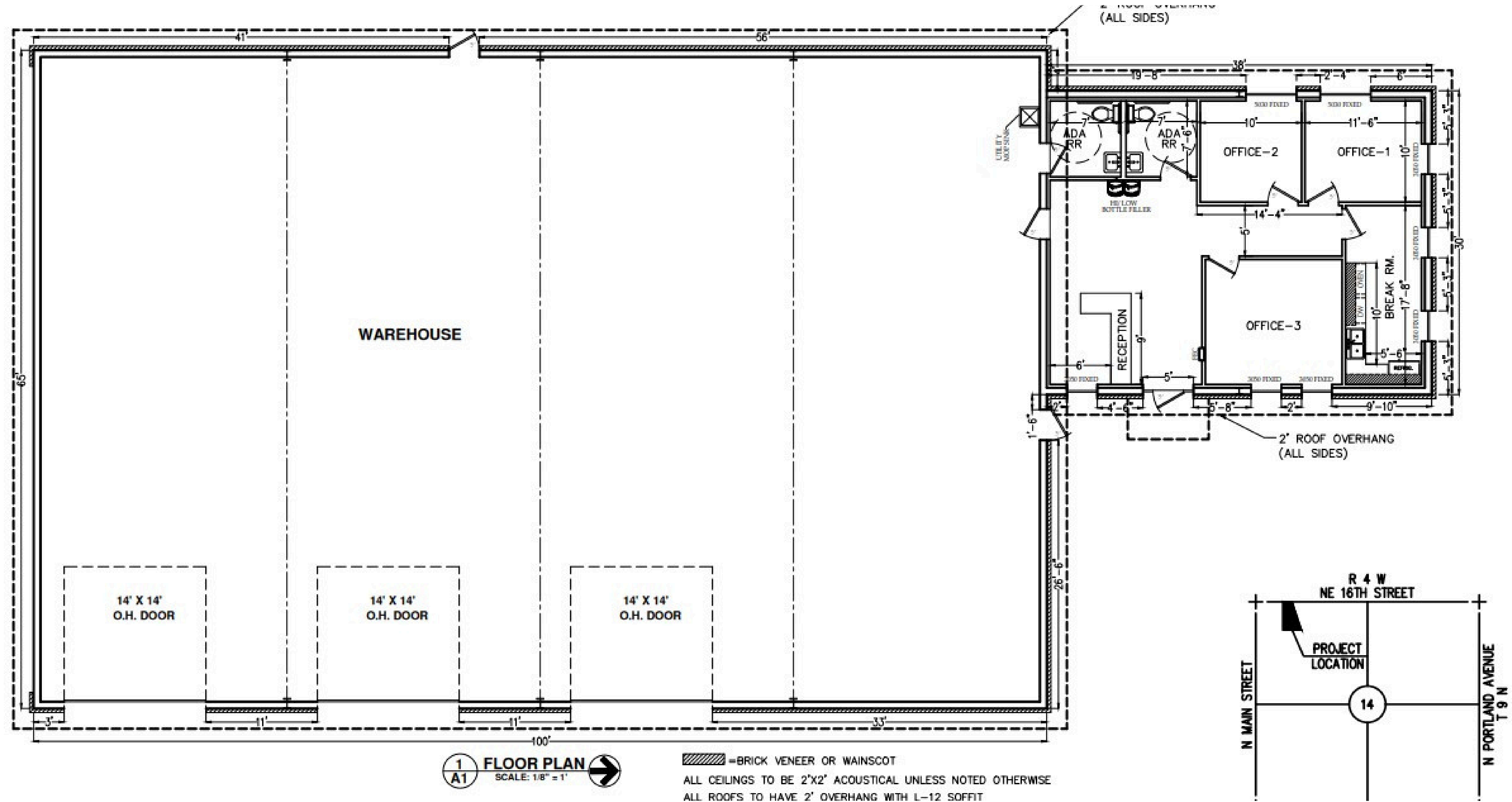
4 SOUTH ELEVATION
A1 SCALE: 1/8" = 1'



5 WEST ELEVATION
A1 SCALE: 1/8" = 1'

Contact Broker for Rate | caleb@itgcre.com | 405-923-6240

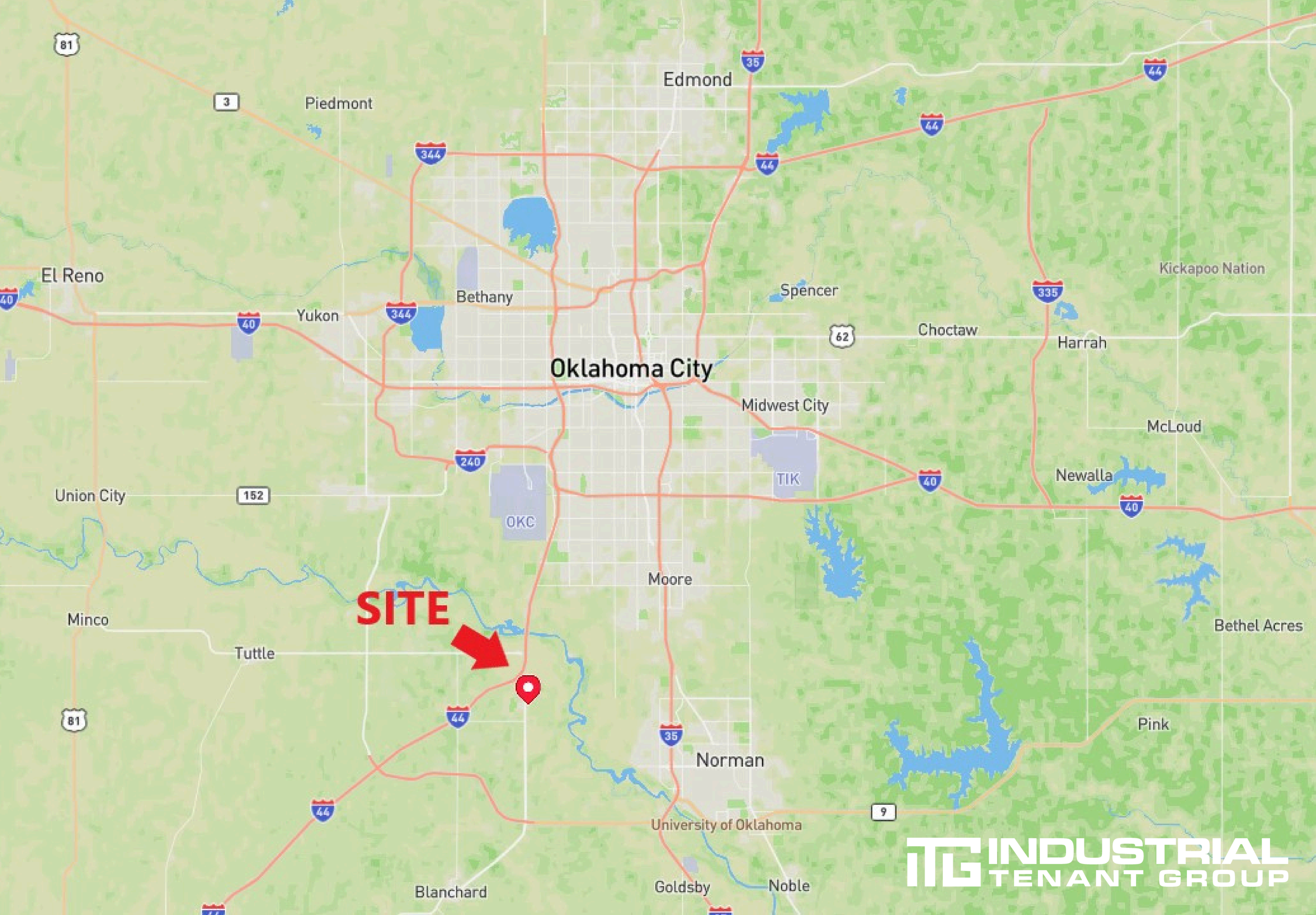




Property Features

- + Building Size : ± 6,000, SF
- + Office: ± 1,000 SF
- + Warehouse: ± 5,000 SF
- + Lot Size: ± 2.67 Acres
- + Power: 3 Phase
- + Clear Height: 14' - 20'
- + Zoning: CC2
- + Grade Level Doors: (3) 14'x14'
- + Docks: None

New construction opportunity in Newcastle, Oklahoma – a market with limited available inventory.



**ITG INDUSTRIAL
TENANT GROUP**

industrialtenantgroup.com | 101 Park Ave, Suite 1300, Oklahoma City, OK 73102 | 405-500-7070 | info@itgcre.com

The information contained herein was obtained from sources believed reliable; however, Industrial Tenant Group makes no guarantees, warranties or representations as to the completeness or accuracy thereof. The presentation of this property is submitted subject to errors, omissions, change of price or conditions prior to sale or lease, or withdrawal without notice.