

PACIFIC PARK PLAZA

27101 - 27141 ALISO CREEK RD
ALISO VIEJO, CA 92656

**OFFICE,
RETAIL, &
INDUSTRIAL
UNITS**

Pacific Park Plaza

For More Information Contact:

Angela Draper

Leasing Manager

ADraper@essexrealty.com

ph: 949.798.8100

www.essexrealty.com

License #01972882

ESSEX | REALTY
MANAGEMENT, INC.

PACIFIC PARK PLAZA

AVAILABILITIES:

Office:

27101- 112: 961sf (Reception, 2 private offices) - \$1.70 NNN

27141- 235: 898sf (4 offices, reception) - \$2.45 FSG

27141-260: 809sf(2 offices, reception area) - \$2.45FSG

27141-265: 1,902sf (4 offices, open area, wetbar) - \$2.45 FSG

27141- 270: 2,409sf (6 offices, wetbar, conference room) - \$2.45 FSG

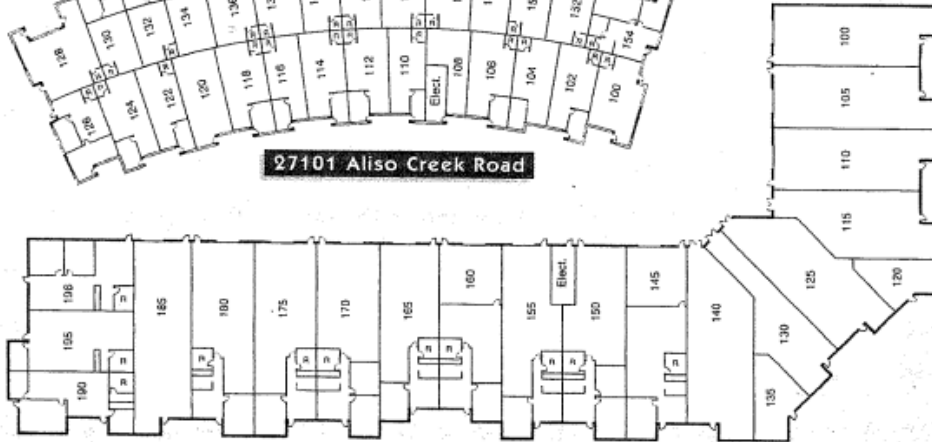
Features:

- Beautiful park-like setting
- Easy access to 73 Toll Road
- Walking distance to shops, restaurants, and other amenities.
- Professionally managed
- Onsite management/leasing office

PACIFIC PARK PLAZA



27101 Aliso Creek Road



27111 Aliso Creek Road



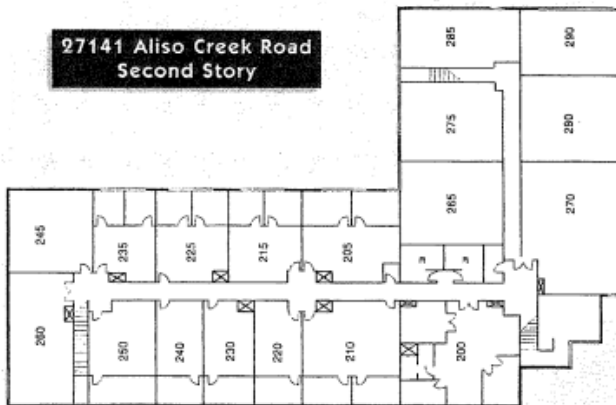
27121 Aliso Creek Road



27131 Aliso Creek Road



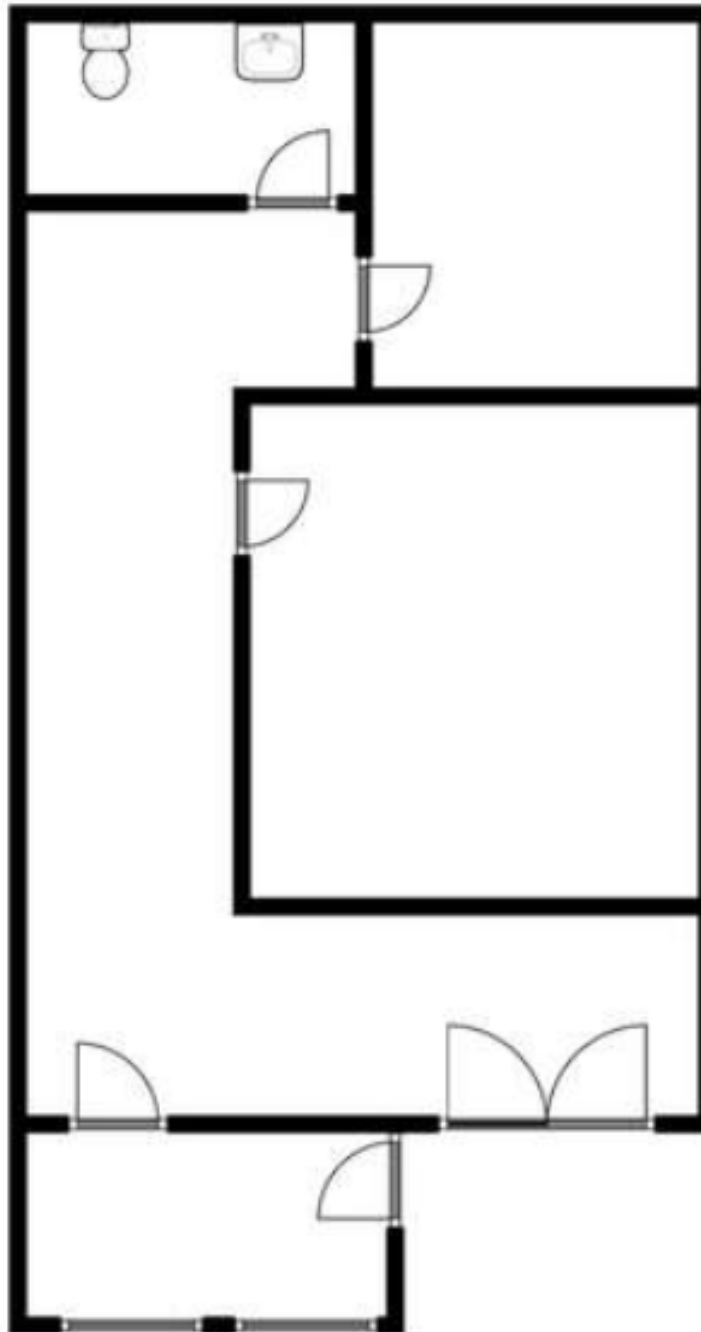
27141 Aliso Creek Road



27141 Aliso Creek Road
Second Story

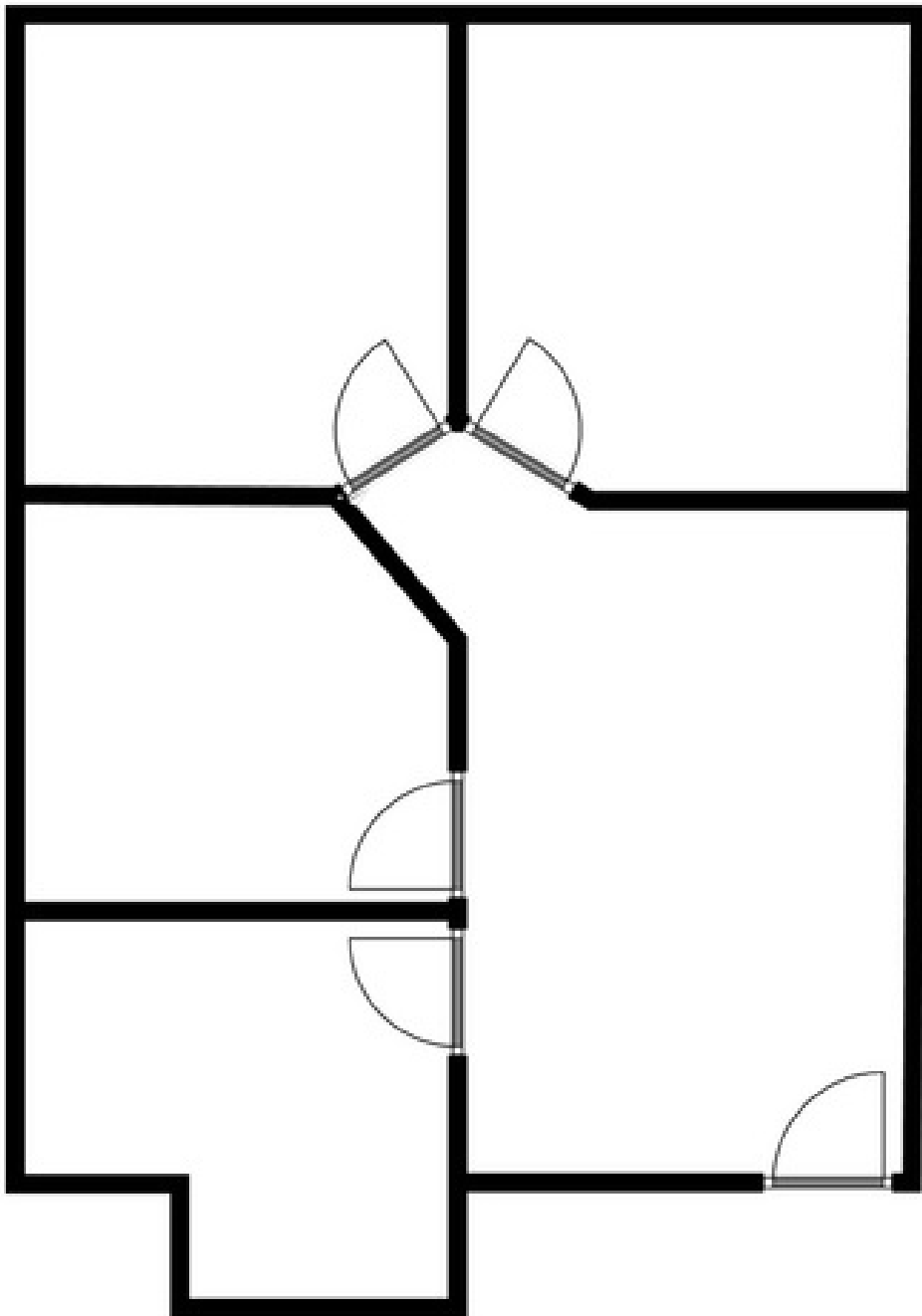
PACIFIC PARK PLAZA

27101-112
961 Sq. Ft.



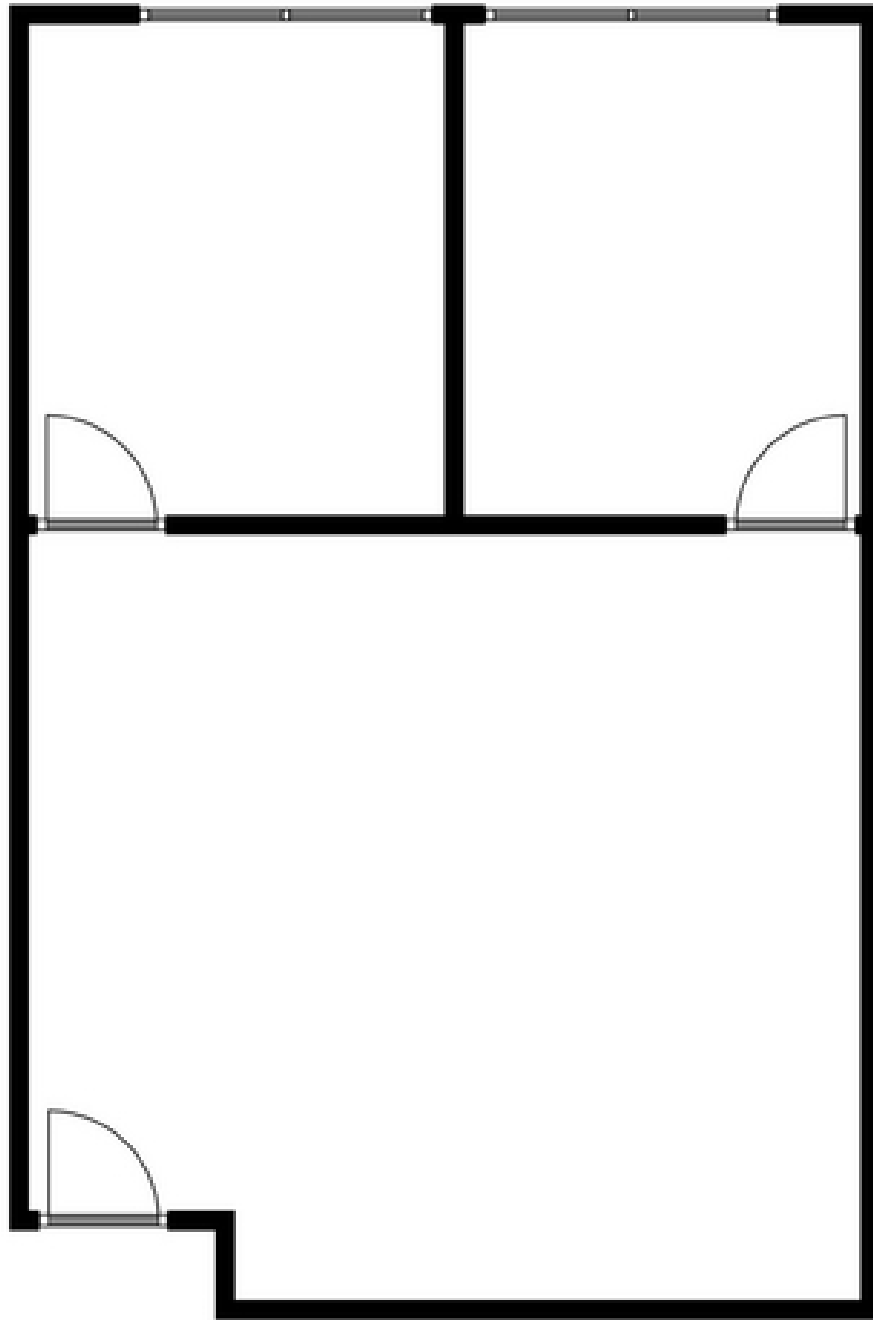
PACIFIC PARK PLAZA

27141-235
898 Sq. Ft.



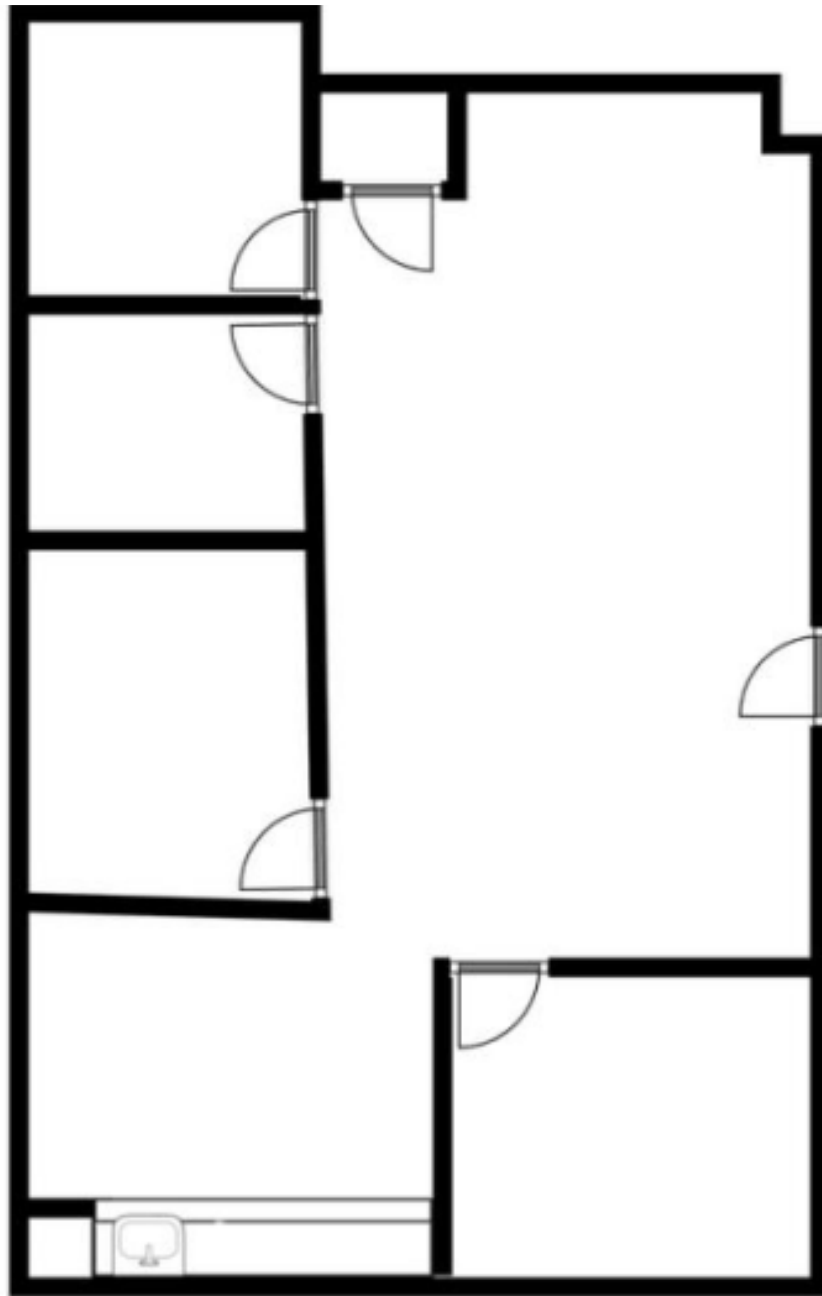
PACIFIC PARK PLAZA

27141-260
809 Sq. Ft.



PACIFIC PARK PLAZA

27141-265
1,902 Sq. Ft.



PACIFIC PARK PLAZA

27141-270
2,409 Sq. Ft.

