

111 LITTLETON RD **111** LITTLETON PARSIPPANY, NJ



OWNED AND MANAGED BY



Building Information

- Building size: 36,389 SF three floors
- Available: 1,380 SF | 2,885 SF | 4,561 SF
- Office Suites: Build-to-suit
- Parking: 155 spaces (4.25:1000 SF)
- Occupancy: Immediate

Property Features

- 2 story atrium
- Signage/branding opportunity
- Immediate access to I-80, I-287 & Rt 46
- Short drive to shopping, restaurants & hotels
- Back-up generator capacity available

Exceptional Access - Exceptional Visibility
Built for Small Business - Image Conscious
All Suites Built To Tenant's Needs

<https://111littleton.com>

For more information or personal inspection:

W. Joshua Levering, SIOR

973 463 1011 x137 | jlevering@naihanson.com

William Ericksen

973 463 1011 x112 | wericksen@naihanson.com

NAI James E. Hanson

COMMERCIAL REAL ESTATE SERVICES, WORLDWIDE

10 Lanidex Plaza West, Parsippany, NJ 07054

195 North St, Suite 100, Teterboro, NJ 07608

FOLLOW US!     | naihanson.com

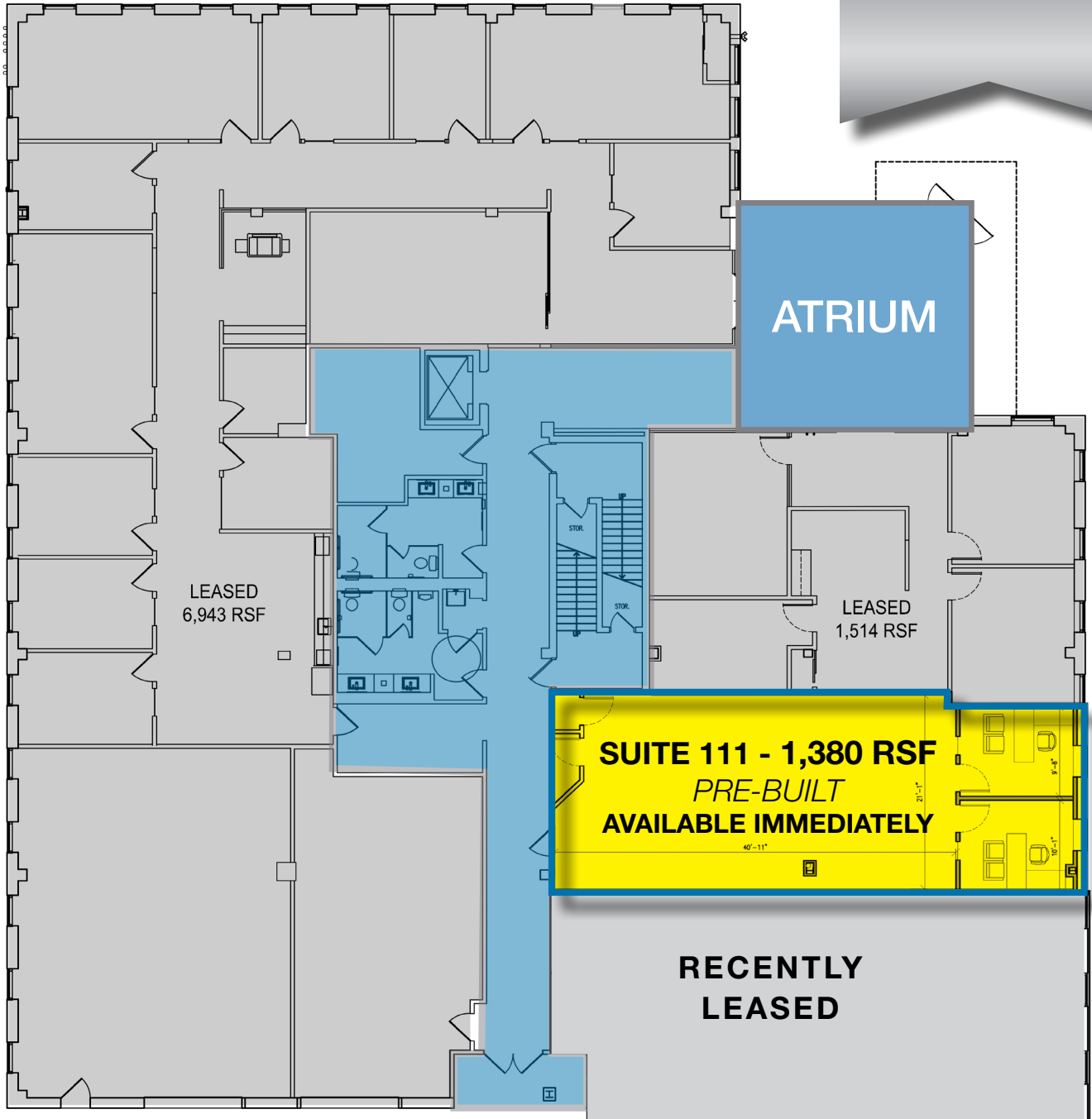
Member of NAI Global with 400 Offices Worldwide

1ST FLOOR PLAN

SUITE 111

111 Littleton Rd
Parsippany, NJ

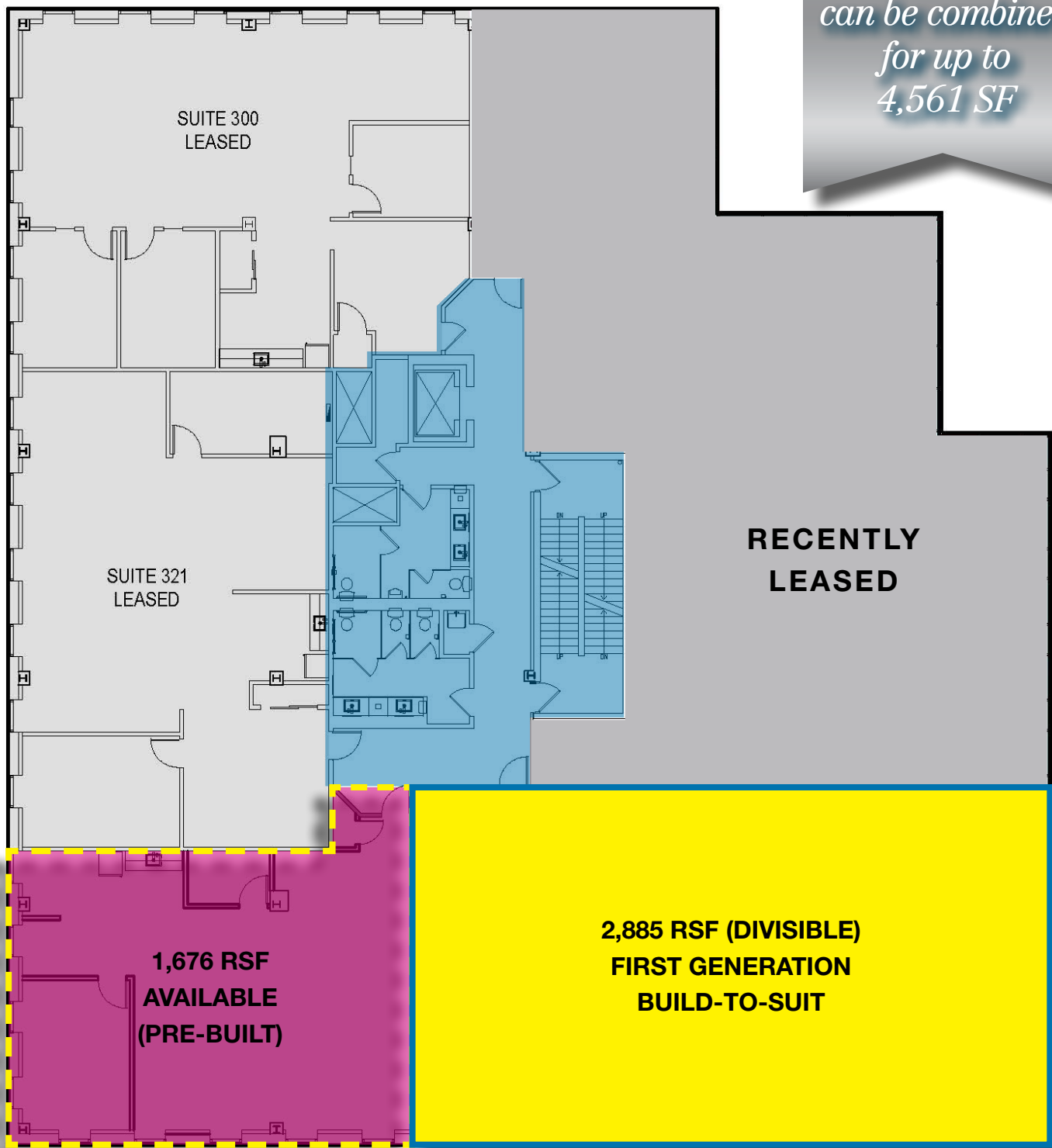
*Pre-Built with
Immediate
Occupancy*



3RD FLOOR PLAN
SUITE 320 & 330

111 Littleton Rd
Parsippany, NJ

*2,885 SF is
Build-to-Suit &
can be combined
for up to
4,561 SF*



111 Littleton Road is a 36,389 SF office building designed for the image conscious small business.

It is strategically located at the northwest quadrant of the intersection of I-287 and I-80.

Visit www.111littleton.com to learn more!

Location

- 0.1 miles to I-287
- 0.1 miles to US-46
- 0.2 miles to I-80
- 0.1 miles to US-202

