

24359 NORTHWESTERN HWY.  
SOUTHFIELD, MICHIGAN

OFFICE FOR LEASE  
6,017 Square Feet Available



**SIGNATURE  
ASSOCIATES**  
KNOW SIGNATURE | KNOW RESULTS

**CORPORATE OFFICE BUILDING**



## PROPERTY FEATURES

- 6,017 square feet available
- First floor office suite in a beautifully maintained building
- Complimentary basement storage
- Convenient location with excellent access and central to all of Metro Detroit
- On-site owner/management
- Professional tenants and an excellent choice for successful businesses
- Lease Rate: \$12.95/sq. ft. G + E



For more information, please contact:

**CHRIS SECONTINE**  
(248) 799 3174

csecontine@signatureassociates.com

**MARVIN PETROUS**  
(248) 359 0647

mpetrous@signatureassociates.com

**SIGNATURE ASSOCIATES**  
One Towne Square, Suite 1200  
Southfield, MI 48076  
www.signatureassociates.com

# 24359 Northwestern Hwy., – Southfield, Michigan

Office For Lease

6,017  
Square Feet  
AVAILABLE

## Site Plan

NORTHWESTERN HIGHWAY



For more information, please contact:

**CHRIS SECANTINE**

(248) 799 3174

csecontine@signatureassociates.com

**MARVIN PETROUS**

(248) 359 0647

mpetrous@signatureassociates.com

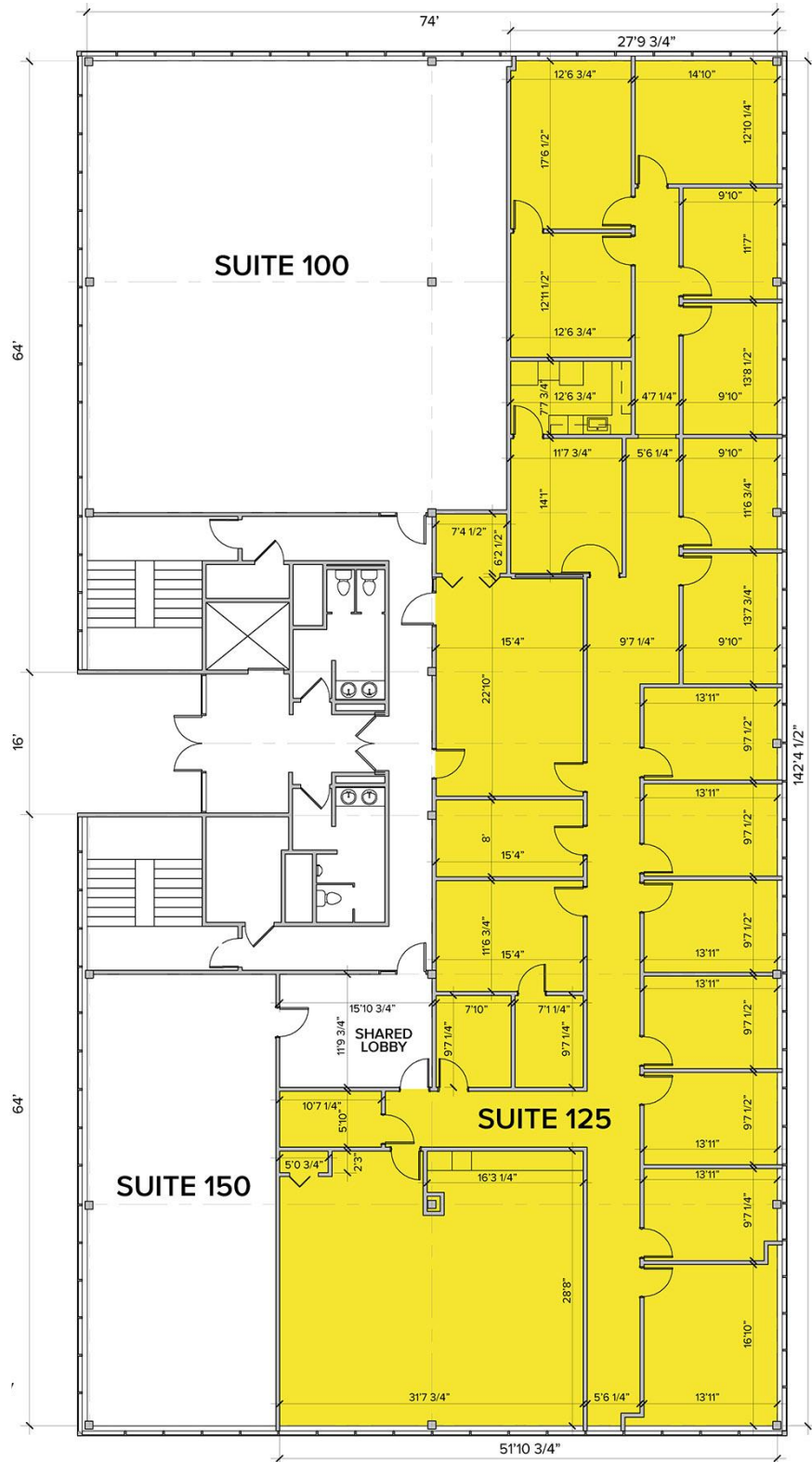
**SIGNATURE ASSOCIATES**

One Towne Square, Suite 1200

Southfield, MI 48076

www.signatureassociates.com

Floor Plan



For more information, please contact:

**CHRIS SECANTINE**

(248) 799 3174

csecontine@signatureassociates.com

**MARVIN PETROUS**

(248) 359 0647

mpetrous@signatureassociates.com

**SIGNATURE ASSOCIATES**

One Towne Square, Suite 1200

Southfield, MI 48076

www.signatureassociates.com

# 24359 Northwestern Hwy., – Southfield, Michigan

Office For Lease

6,017  
Square Feet  
AVAILABLE

Aerial



For more information, please contact:

**CHRIS SECONTINE**

(248) 799 3174

[csecontine@signatureassociates.com](mailto:csecontine@signatureassociates.com)

**MARVIN PETROUS**

(248) 359 0647

[mpetrous@signatureassociates.com](mailto:mpetrous@signatureassociates.com)

**SIGNATURE ASSOCIATES**

One Towne Square, Suite 1200

Southfield, MI 48076

[www.signatureassociates.com](http://www.signatureassociates.com)