

FOR LEASE—CORPORATE OFFICE SPACE

Thompson Center Waters - Tampa, Fl



Property Features:

Opportunity: 2,022+/- RSF office space with open floor plan, one private office, break area and two restrooms. Recently renovated from the ground up. Ample parking and access to area corridors make the location ideal for small corporate users and start up businesses.

Address: 5483 W Waters Ave, Tampa, FL 33634 (easy access to Veterans Expressway, Anderson Rd and Waters Ave)

Building Features:

- Multiple Build-Out Options Available
- Completely Remodeled Interior
- Open Floor Plans with Private Executive Offices, Break Room
- 5:1000 Parking with up to 175 spaces
- On-Site Hotel and Day Care
- Located Near Area Restaurants & Shopping

Lease Rate: Suite E—2,022 SF \$17 NNN

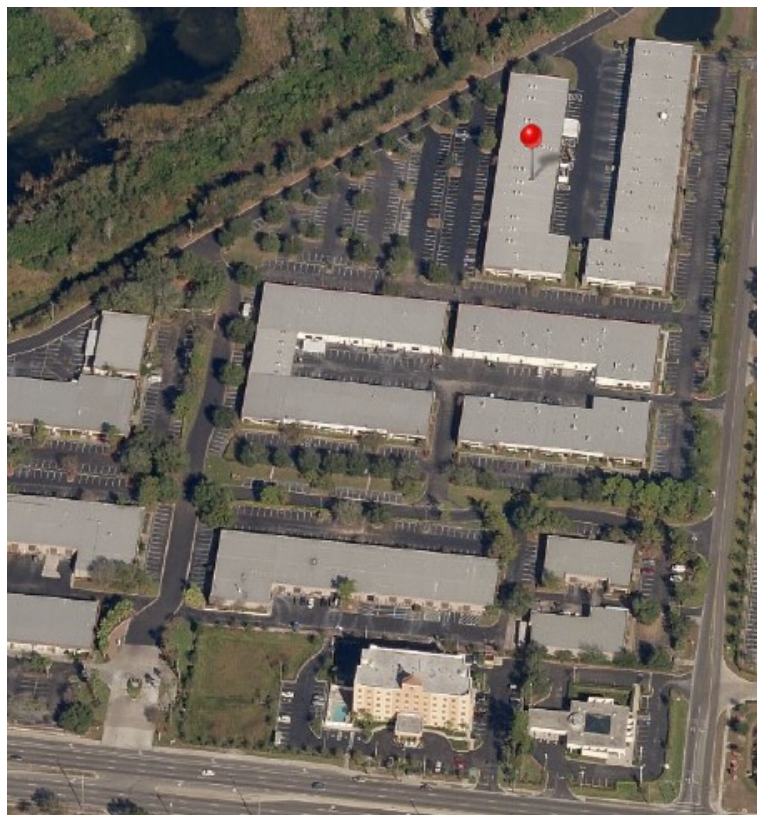
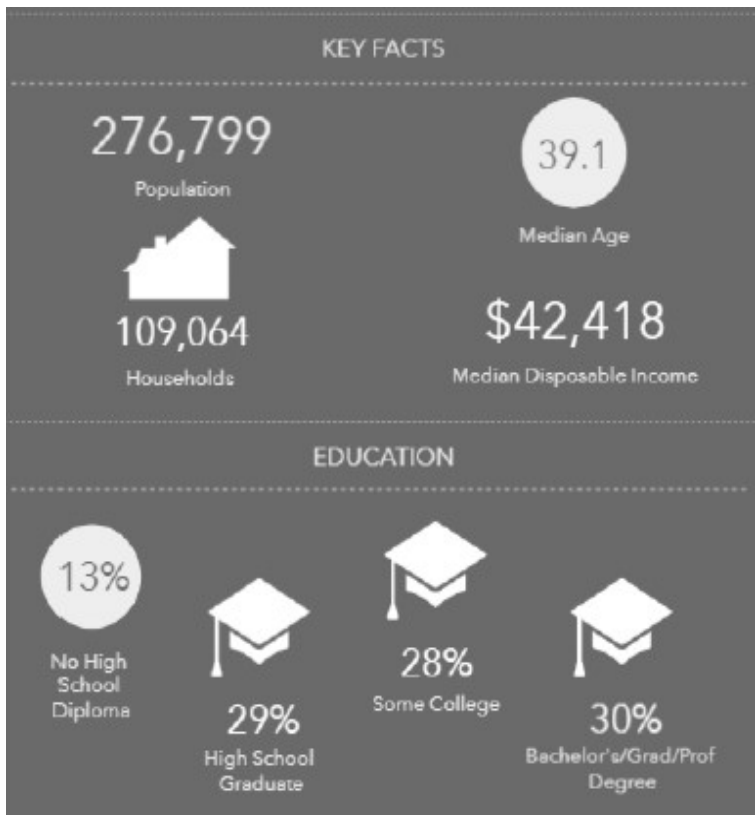
NNN \$5.05 PSF



SAGE N. ANDRESS, ALC, CCIM
Tampa Director
PH: 813-416-4254
sage_andress@hotmail.com



5483 W Waters Ave, Tampa, FL 33634



5483 W Waters Ave, Tampa, FL 33634

