



**FOR LEASE**

BASHFORD MANOR PLAZA  
LOUISVILLE, KENTUCKY

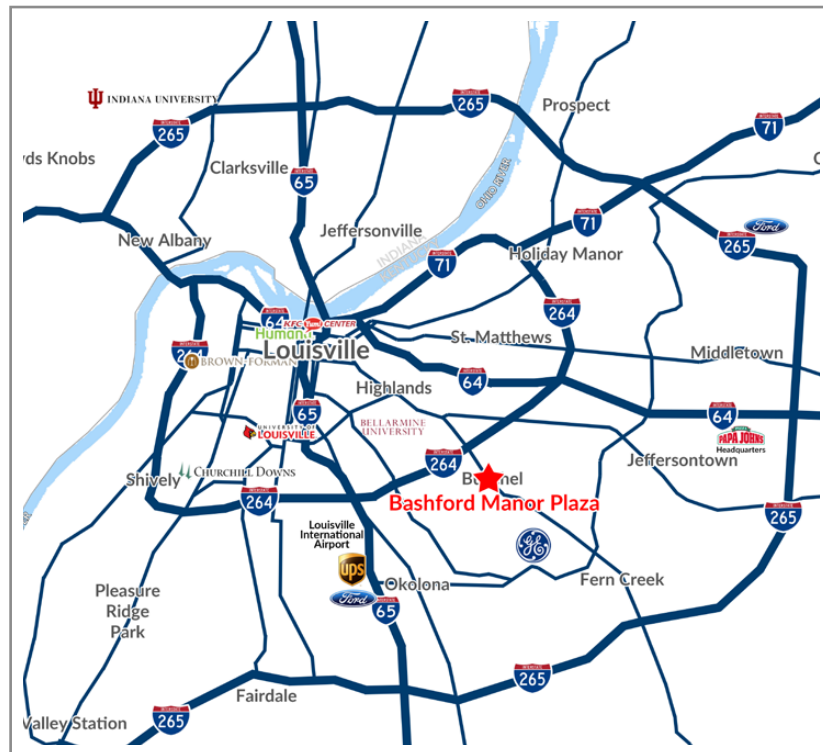
**HOGAN**  
REAL ESTATE

# PROPERTY DESCRIPTION

BASHFORD MANOR PLAZA  
LOUISVILLE, KENTUCKY

## Property Overview

Bashford Manor Plaza is located south of Interstate 264, in the dense neighborhood of Buechel. This property is contiguous to Burlington Coat Factory and directly next to Lowe's. Walmart Supercenter, Target, Kroger, Walgreens, CVS, and Costco are also in the immediate trade area, as well as many other retailers, restaurants, medical and office users.



## Features

- + Up to 50,000 ± SF available next to Burlington Coat Factory
- + New Burlington 10-year lease extension and store remodel
- + Property located at signalized traffic light with over 50,000 VPD
- + Centrally located in densely populated trade area with nearly 100,000 people in 3-mile radius
- + Located next to Walmart, Lowes, Target, and Burlington Coat Factory
- + Convenient access to I-264
- + Large Pylon sign on Bardstown Road available

## Demographics

	1 Mile	3 Miles	5 Miles
Population	12,072	96,364	240,413
Average Household Income	\$42,606	\$59,202	\$61,474



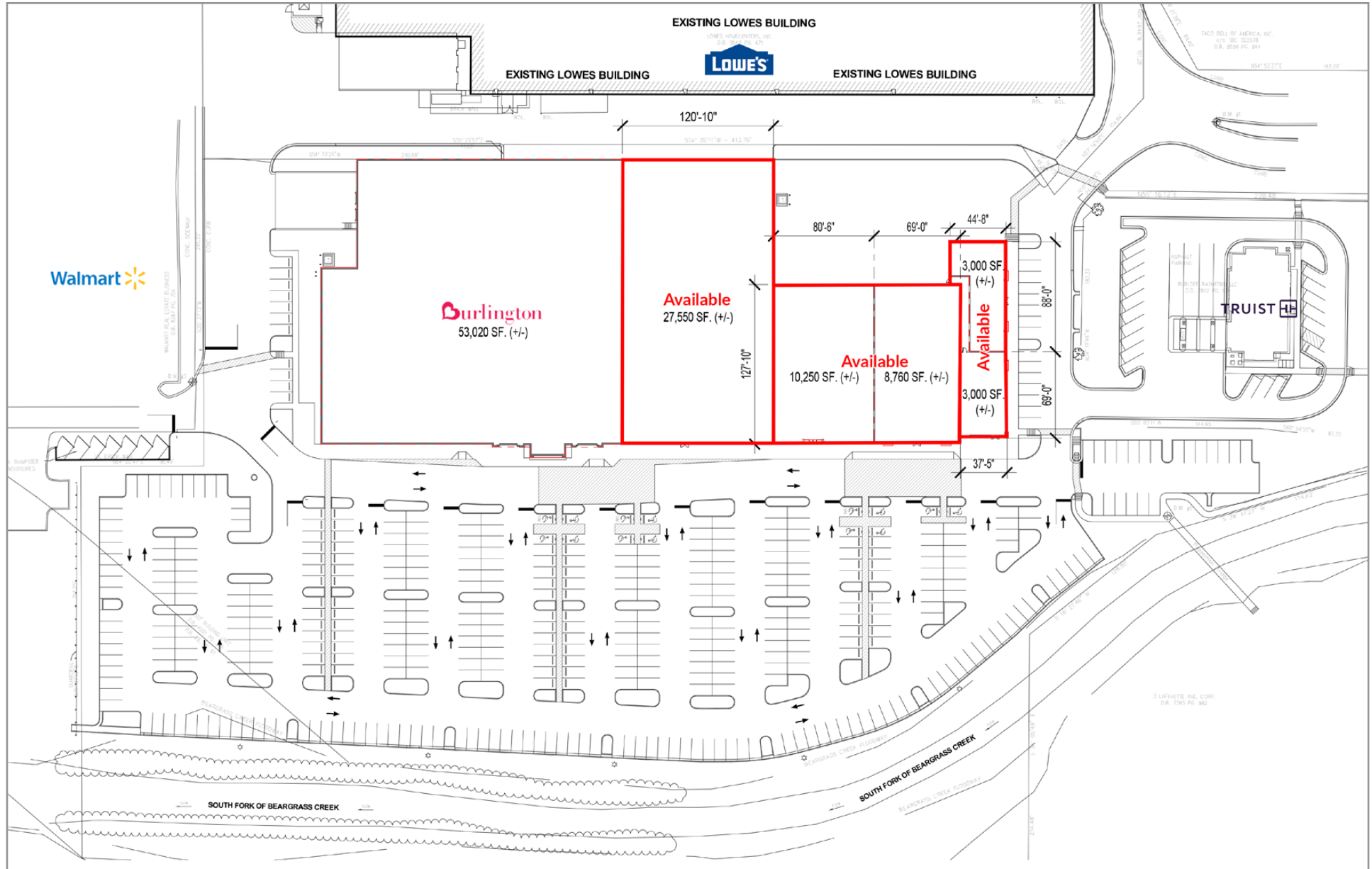
# PROPOSED ELEVATION

BASHFORD MANOR PLAZA  
LOUISVILLE, KENTUCKY



# SITE PLAN

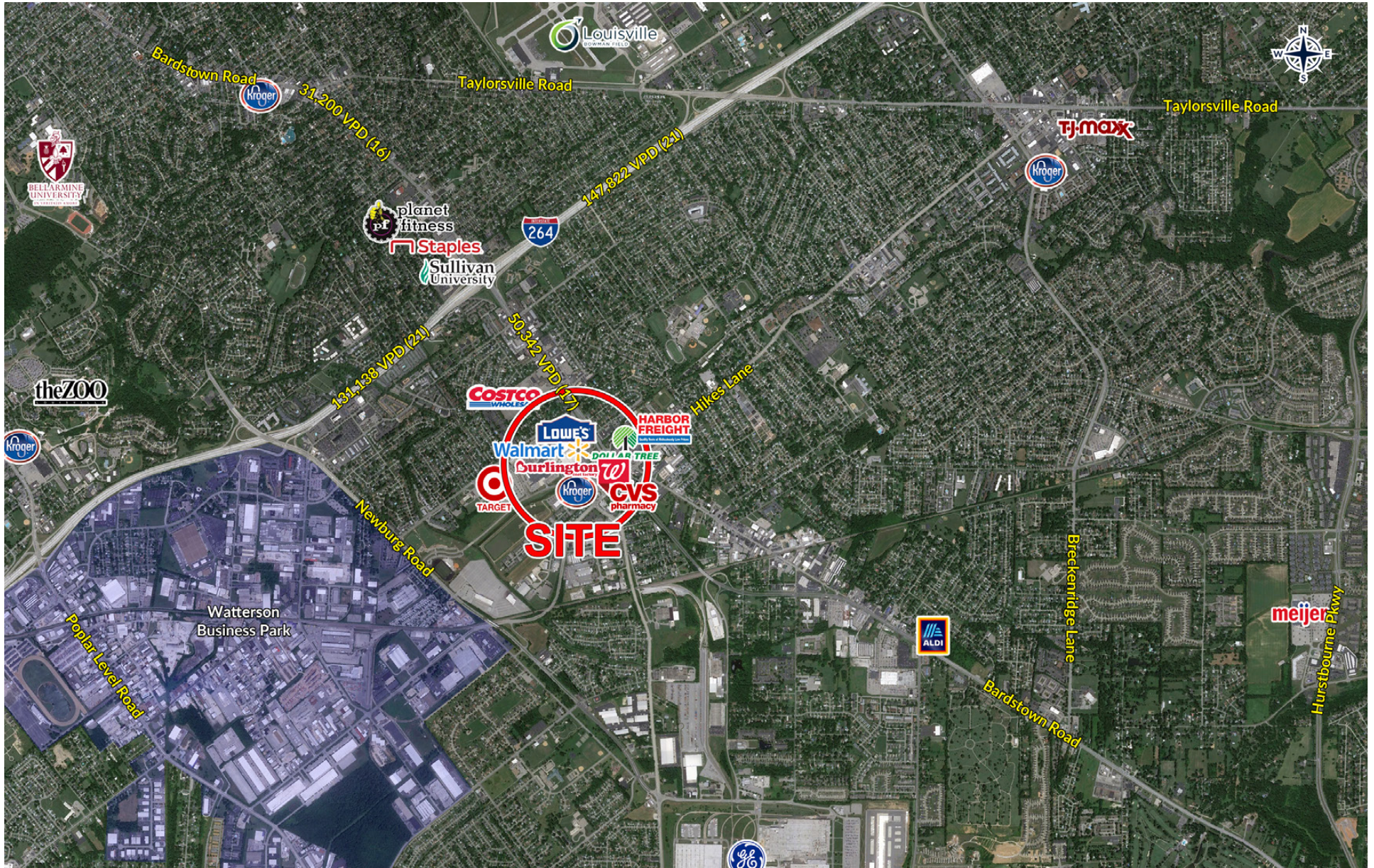
BASHFORD MANOR PLAZA  
LOUISVILLE, KENTUCKY





# TRADE AREA AERIAL

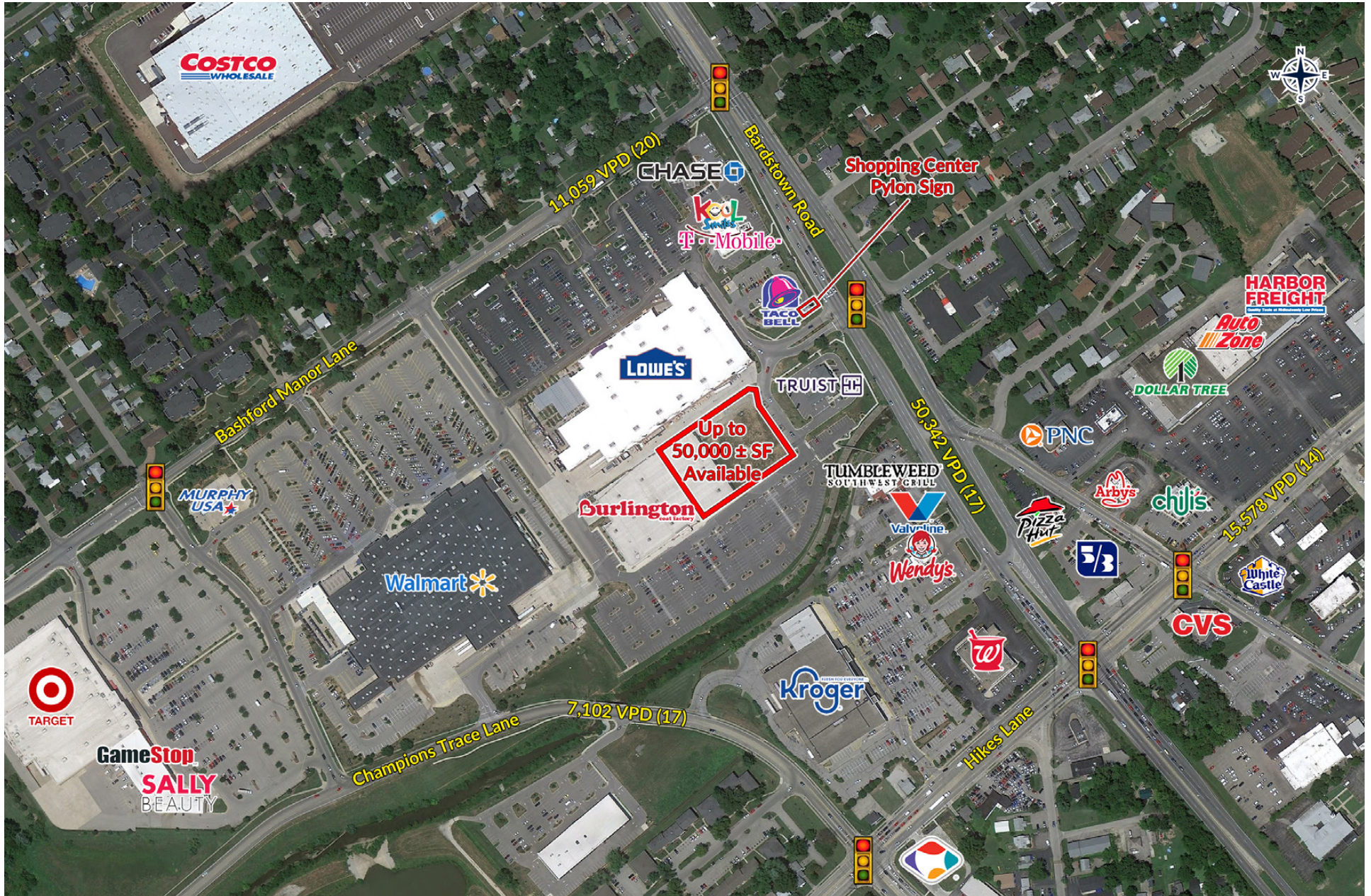
BASHFORD MANOR PLAZA  
LOUISVILLE, KENTUCKY





# IMMEDIATE AREA AERIAL

BASHFORD MANOR PLAZA  
LOUISVILLE, KENTUCKY







## HOGAN REAL ESTATE

### PROPERTY CONTACTS

---



#### Justin Phelps

D: 502.271.5820

M: 502.426.1050

F: 502.426.1223

[jphelps@hogandev.com](mailto:jphelps@hogandev.com)



#### Hunter Jacobs

D: 502.271.5812

M: 502.426.1050

C: 502.639.4727

F: 502.426.1223

[hjacobson@hogandev.com](mailto:hjacobs@hogandev.com)