

19197 Sherwood St

Detroit, MI

- 54,924 Sq. Ft. For Sublease
- Great Manufacturing Space
- 7 1/2 Ton Crane
- Heavy Power with Buss Duct
- Possible Sale Opportunity

INDUSTRIAL BUILDING FOR SUBLEASE



52,174 SF of Factory



2,750 SF of Office



5 Grade Level Doors

FOR MORE INFORMATION:

Jason Capitani, SIOR, CCIM Managing Partner 248.637.7684 jcapitani@LMCap.com	Joe DePonio III, SIOR Senior Vice President 248.637.3513 jdeponio@LMCap.com
---	--

248.637.9700 | LMCap.com

Information contained herein was obtained from sources deemed to be reliable but is not guaranteed. Subjects to prior sales, changes of price or withdrawal.



L. MASON CAPITANI

CORFAC INTERNATIONAL

CELEBRATING 60 YEARS

19197 Sherwood St

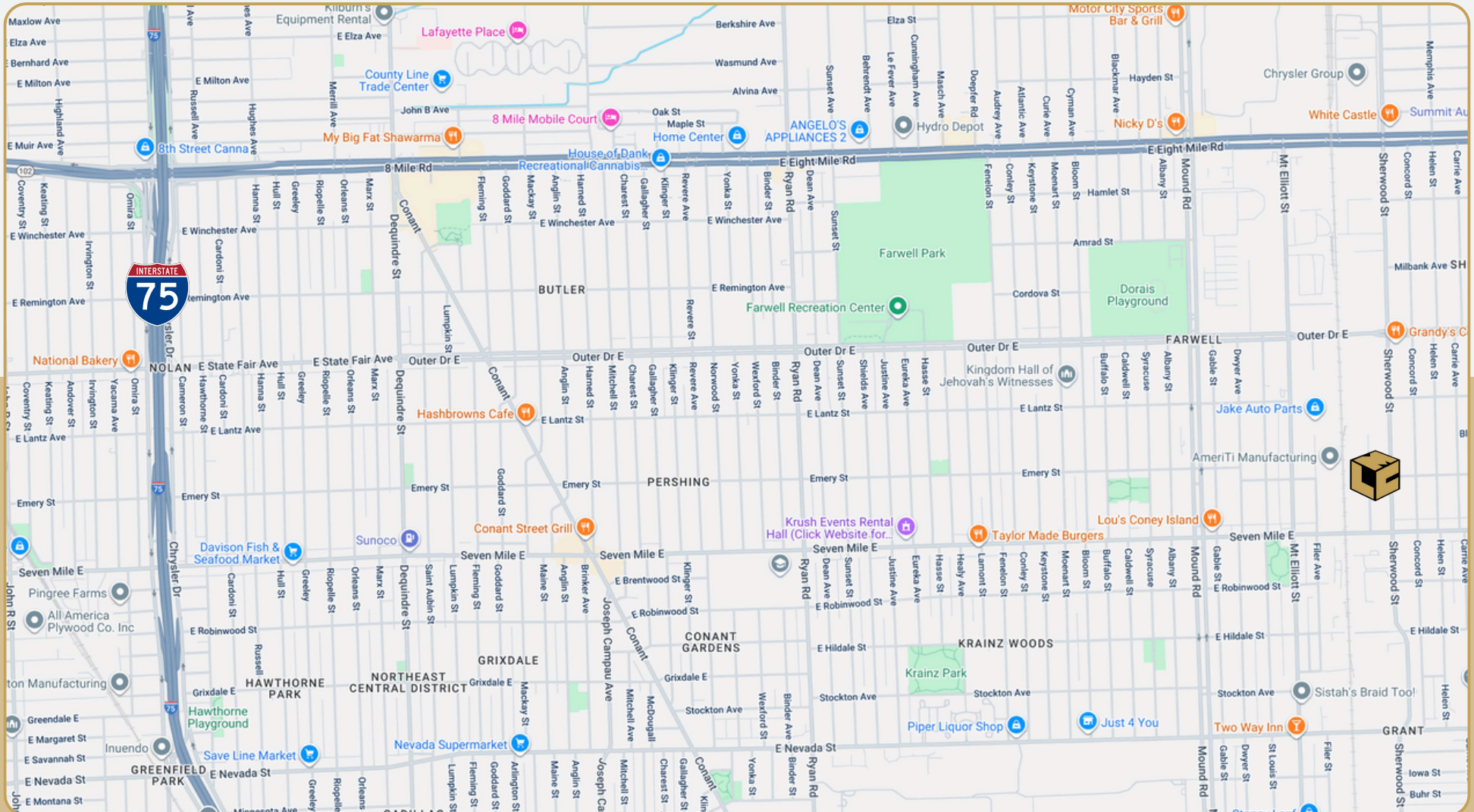
Detroit, MI



L. MASON CAPITANI

CORFAC INTERNATIONAL

CELEBRATING 60 YEARS



248.637.9700 | LMCap.com

Information contained herein was obtained from sources deemed to be reliable but is not guaranteed. Subjects to prior sales, changes of price or withdrawal.

19197 Sherwood St

Detroit, MI



L. MASON CAPITANI

CORFAC INTERNATIONAL

CELEBRATING 60 YEARS



248.637.9700 | LMCap.com

Information contained herein was obtained from sources deemed to be reliable but is not guaranteed. Subjects to prior sales, changes of price or withdrawal.

19197 Sherwood St

Detroit, MI



L. MASON CAPITANI

CORFAC INTERNATIONAL

CELEBRATING 60 YEARS

Industrial Property Details:

Details:

Total SF:	54,924 SF
Available SF:	54,924 SF
Office SF:	2,750 SF
Factory SF:	52,174 SF
Zoning:	M-4
Acres:	3.11
Expandable:	No
Intersection:	Sherwood & 7 Mile
X-Way Distance:	Minutes to I-696/I-75
Parking:	30+ Spaces
Year Built:	1948
Outside Storage:	No
Rail Siding:	No
Occupancy:	Immediate

Interior:

Ceiling Height:	14', 20'
Bay Size:	Varies
Restrooms:	6
Power:	Primary
Power Details:	208/240V 3,600 Amps
Lighting:	Fluorescent
Truckwells:	1 ext.
Grade Door:	5
Heating:	Tube Radiant
A/C:	Office Only
Sprinklered:	None
Air Lines:	Yes
Floor Drains:	No
Notes:	Sublease through November 30, 2030. Owner would consider a sale.

Economic:

Lease/SF	\$2.75 SF/yr
Monthly Rate:	\$12,586.75
Lease Terms:	NNN

248.637.9700 | LMCap.com

Information contained herein was obtained from sources deemed to be reliable but is not guaranteed. Subjects to prior sales, changes of price or withdrawal.

19197 Sherwood St

Detroit, MI

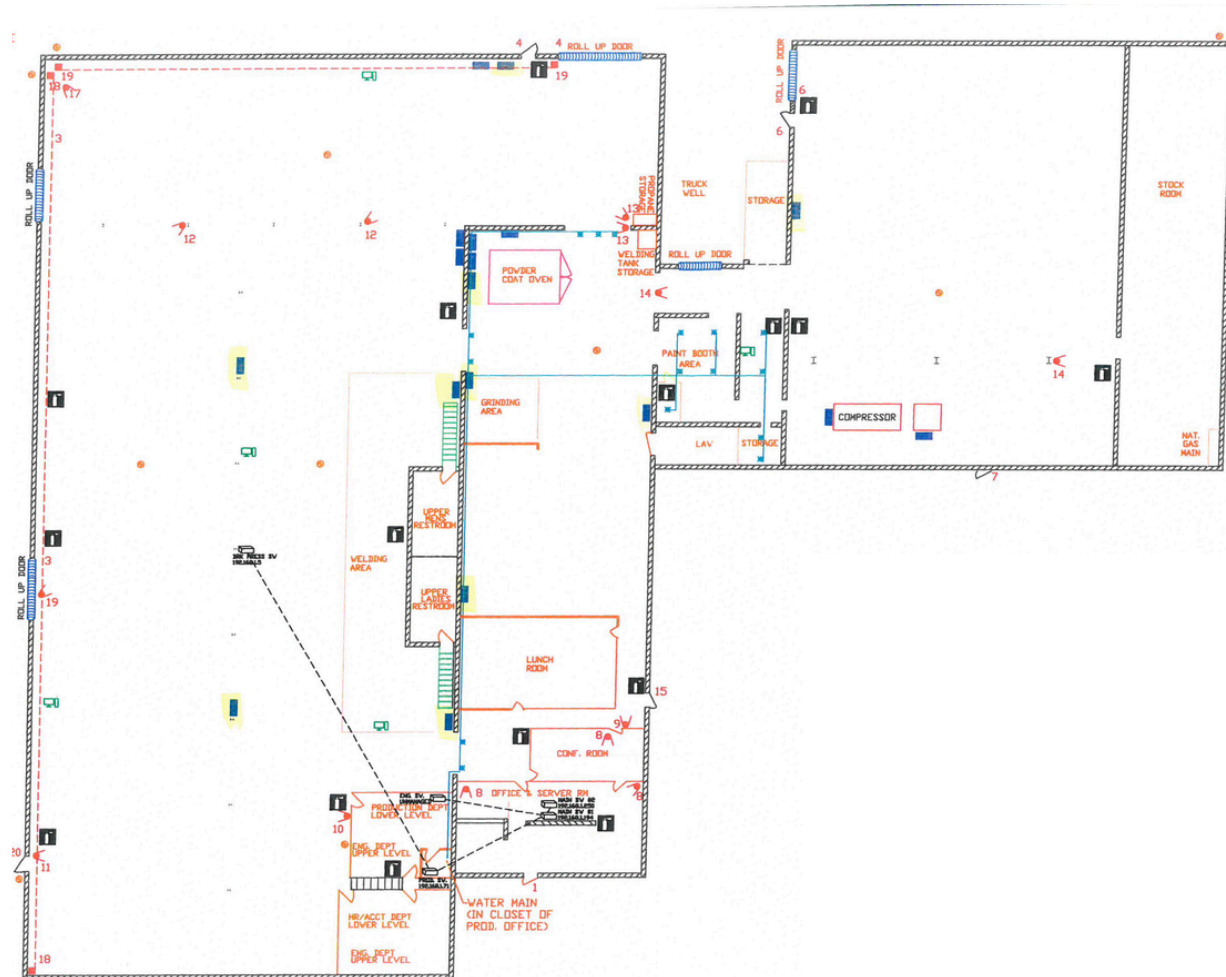


L. MASON CAPITANI

CORFAC INTERNATIONAL

CELEBRATING 60 YEARS

Building Layout



248.637.9700 | LMCap.com

Information contained herein was obtained from sources deemed to be reliable but is not guaranteed. Subjects to prior sales, changes of price or withdrawal.