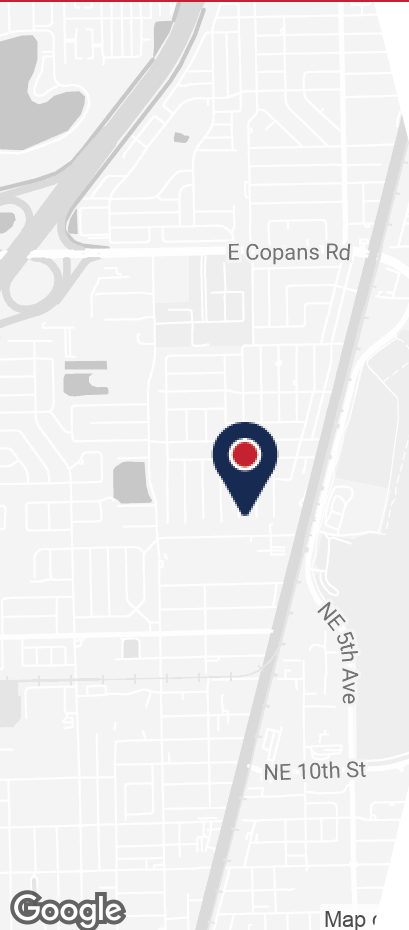


1661 N DIXIE HWY

POMPANO BEACH, FL 33060



### PROPERTY DETAILS

- 1,200 and 2,400 SF Units
- 12' Clear Height
- 10' x 10' Grade Level Loading
- In-Unit Restrooms
- Fenced and Secured Parking
- Frontage on Dixie Hwy
- Conveniently located minutes from I-95 between Copans Rd and Atlantic Blvd
- Zoned B-4, Pompano Beach

### ABOUT PROPERTY



#### PRICE

\$18.00 SF/ Yr (NNN)



#### YEAR BUILT

1975



#### AVAILABLE SF

1,200 - 2,400 SF



#### PARKING

Surface



#### LOCATION

Pompano Beach, FL

For more information:

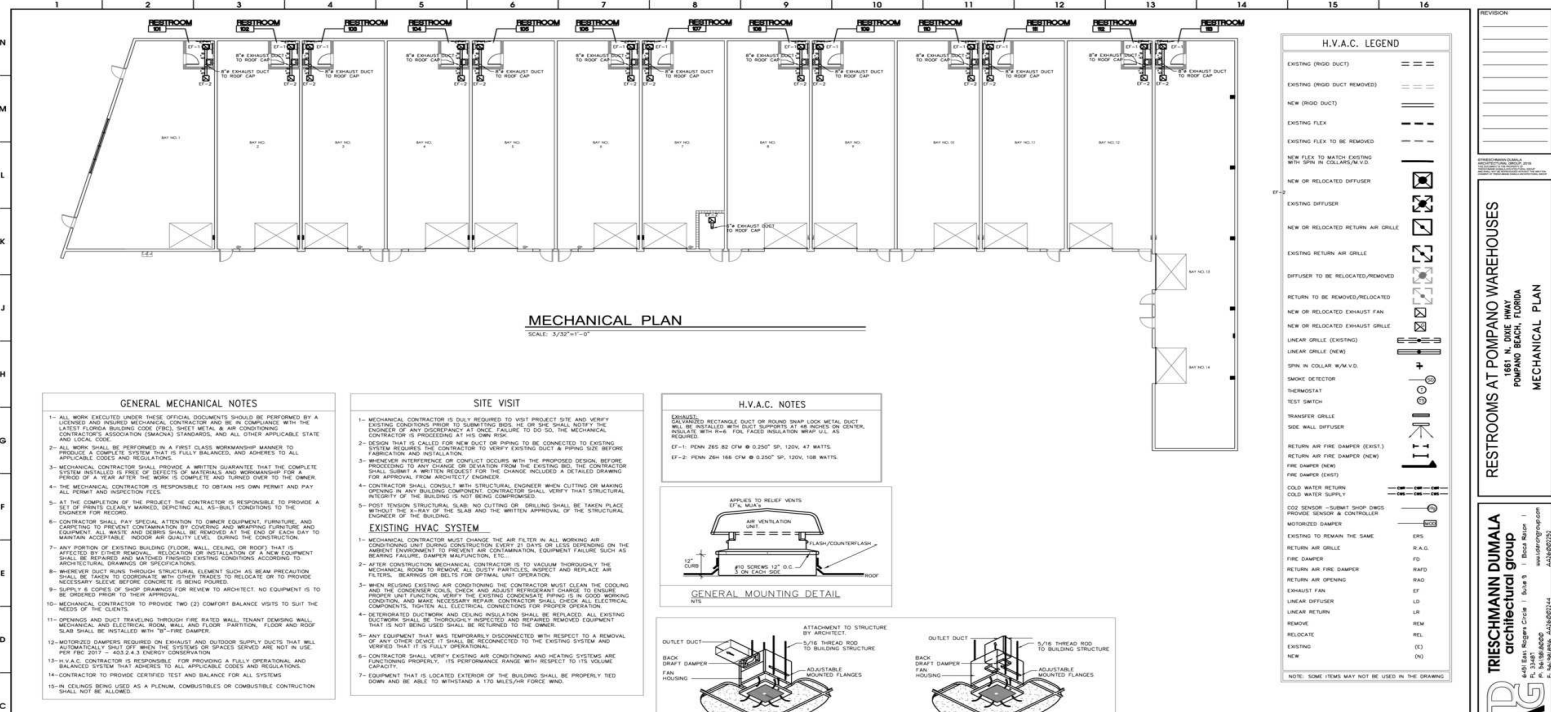
**Jordan Beck**

954.652.2033 | [jbeck@Bergercommercial.com](mailto:jbeck@Bergercommercial.com)  
[bergercommercial.com](http://bergercommercial.com)

**Calder Alfano**

954.652.2041 | [Calfano@Bergercommercial.com](mailto:Calfano@Bergercommercial.com)





## LEASE INFORMATION

Lease Type:	NNN	Lease Term:	Negotiable
Total Space:	1,200 - 2,400 SF	Lease Rate:	\$18.00 SF/yr

## AVAILABLE SPACES

SUITE	TENANT	SIZE (SF)	LEASE TYPE	LEASE RATE	DESCRIPTION
Bay 4	Available	1,200 SF	NNN	\$18.00 SF/yr	1,200 SF Warehouse Unit. One (1) 10' x 10' Drive-In Door. In-Unit Restroom.
Bay 11	Available	1,200 SF	NNN	\$18.00 SF/yr	1,200 SF Warehouse Unit. One (1) 10' x 10' Drive-In Door. In-Unit Restroom.
Bay 13/14	Available	2,400 SF	NNN	\$18.00 SF/yr	2,400 SF Warehouse Unit. Two (2) 10' x 10' Drive-In Doors. In-Unit Restroom.

For more information:

**Jordan Beck**  
954.652.2033 | jbeck@Bergercommercial.com  
bergercommercial.com

**Calder Alfano**  
954.652.2041 | Calfano@Bergercommercial.com



Information furnished regarding this property is from sources deemed reliable, but no warranty or representation as to the accuracy thereof and it is submitted subject to errors, omissions, prior sale, lease or withdrawal without prior notice.

1661 N DIXIE HWY

ADDITIONAL PHOTOS



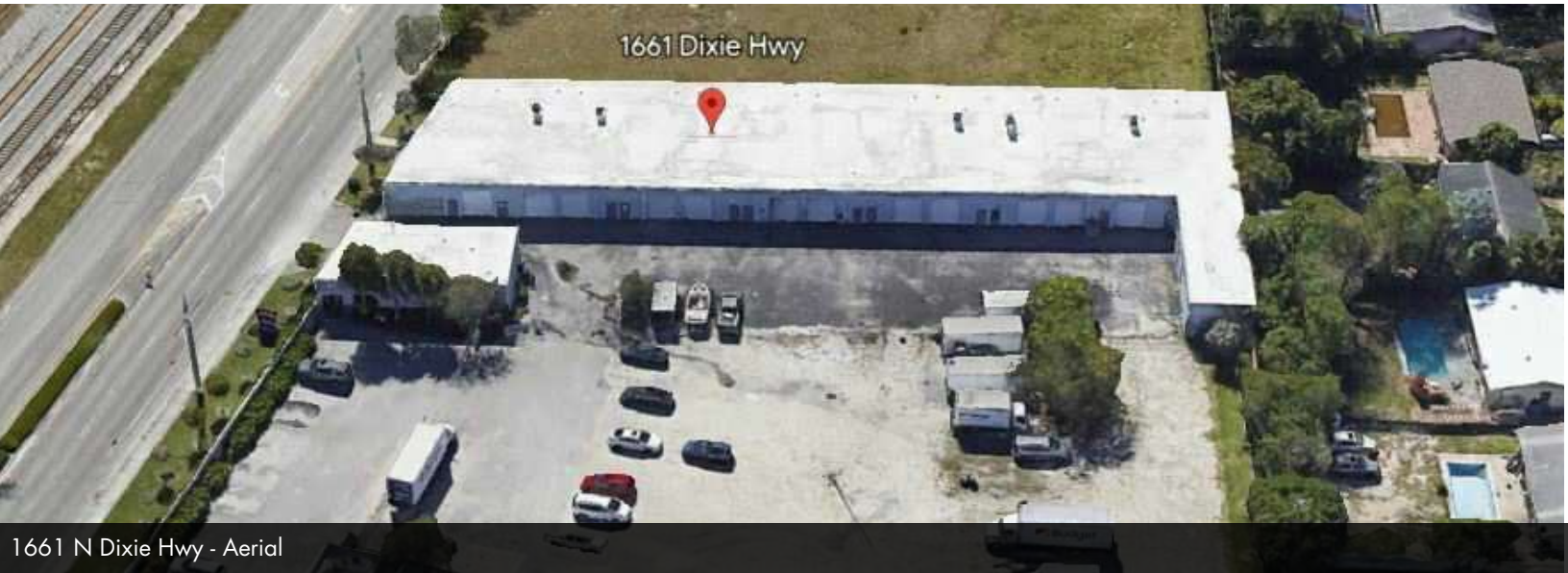
#13/14 - Loading



#13/14 - Warehouse



#4 - Loading



1661 N Dixie Hwy - Aerial

For more information:

**Jordan Beck**

954.652.2033 | [Jbeck@Bergercommercial.com](mailto:Jbeck@Bergercommercial.com)  
[bergercommercial.com](http://bergercommercial.com)

**Calder Alfano**

954.652.2041 | [Calfano@Bergercommercial.com](mailto:Calfano@Bergercommercial.com)

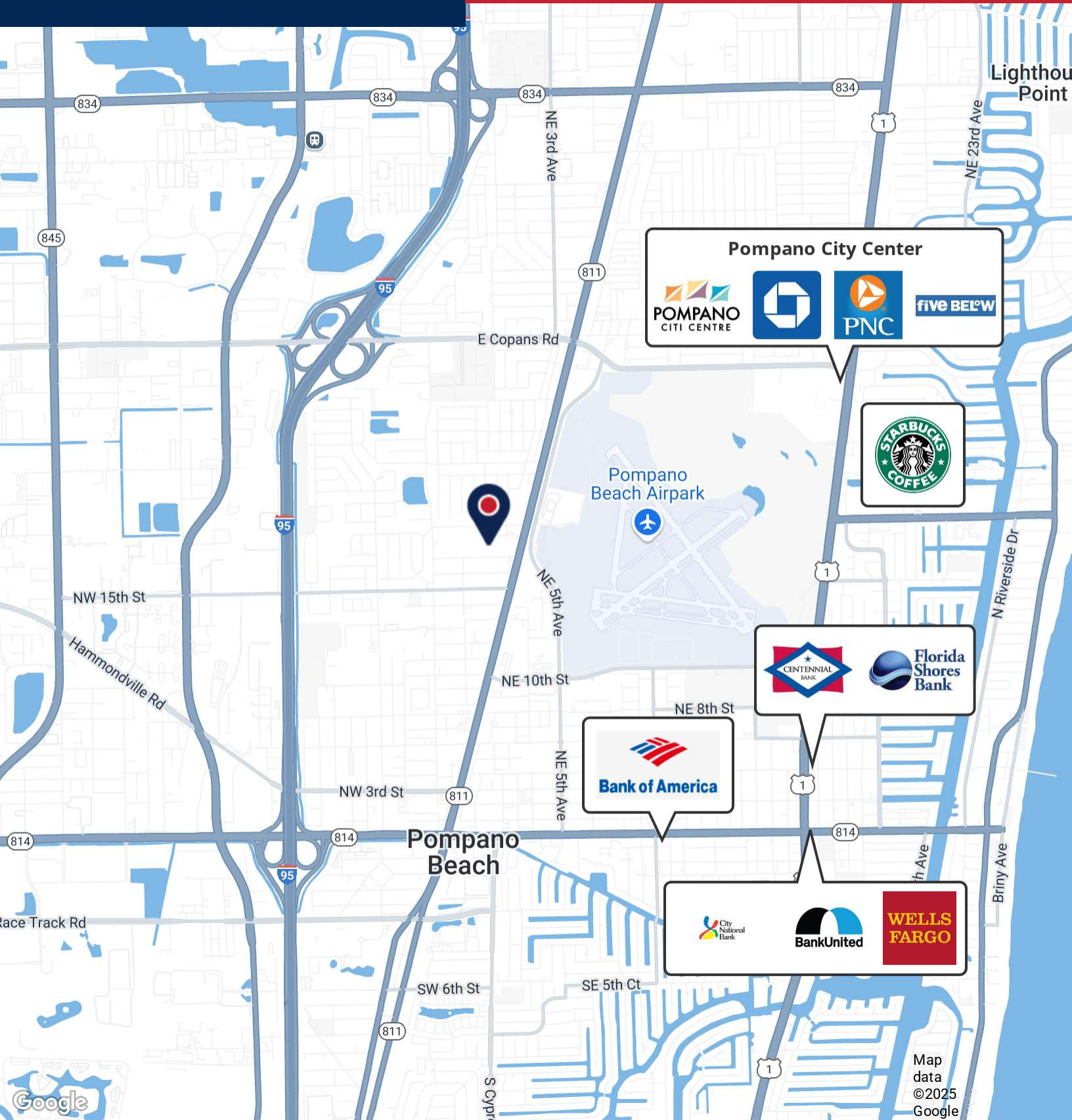


COMMERCIAL BROKERAGE AND PROPERTY MANAGEMENT

*Information furnished regarding this property is from sources deemed reliable, but no warranty or representation as to the accuracy thereof and it is submitted subject to errors, omissions, prior sale, lease or withdrawal without prior notice.*

# 1661 N DIXIE HWY

## LOCATION MAP



For more information:

**Jordan Beck**

954.652.2033 | [jbeck@Bergercommercial.com](mailto:jbeck@Bergercommercial.com)  
[bergercommercial.com](http://bergercommercial.com)

**Calder Alfano**

954.652.2041 | [Calfano@Bergercommercial.com](mailto:Calfano@Bergercommercial.com)

