



For Sublease

Morgan Lakes Industrial

521 Morgan Lakes Industrial Boulevard
Pooler, GA 31322

- ±499,200 SF crossdock warehouse space available
- ±3,860 SF office
- 110 dock doors & 2 drive-in doors
- 125 trailer parking
- Class A concrete tilt-wall construction—built in 2019
- Located 10.1 miles from the GPA's Garden City Terminal
- Easy access to Interstate 95 (4.0 miles) and Interstate 16 (7.1 miles)
- **Sublease term through October 31, 2026**

Sublease Rate:

Please
Inquire

Hilary Shipley, SIOR

Principal

Direct +1 912 662 8013

Cell +1 912 441 3912

hilary.shipley@colliers.com

Colliers

Colliers | Savannah

545 E York Street

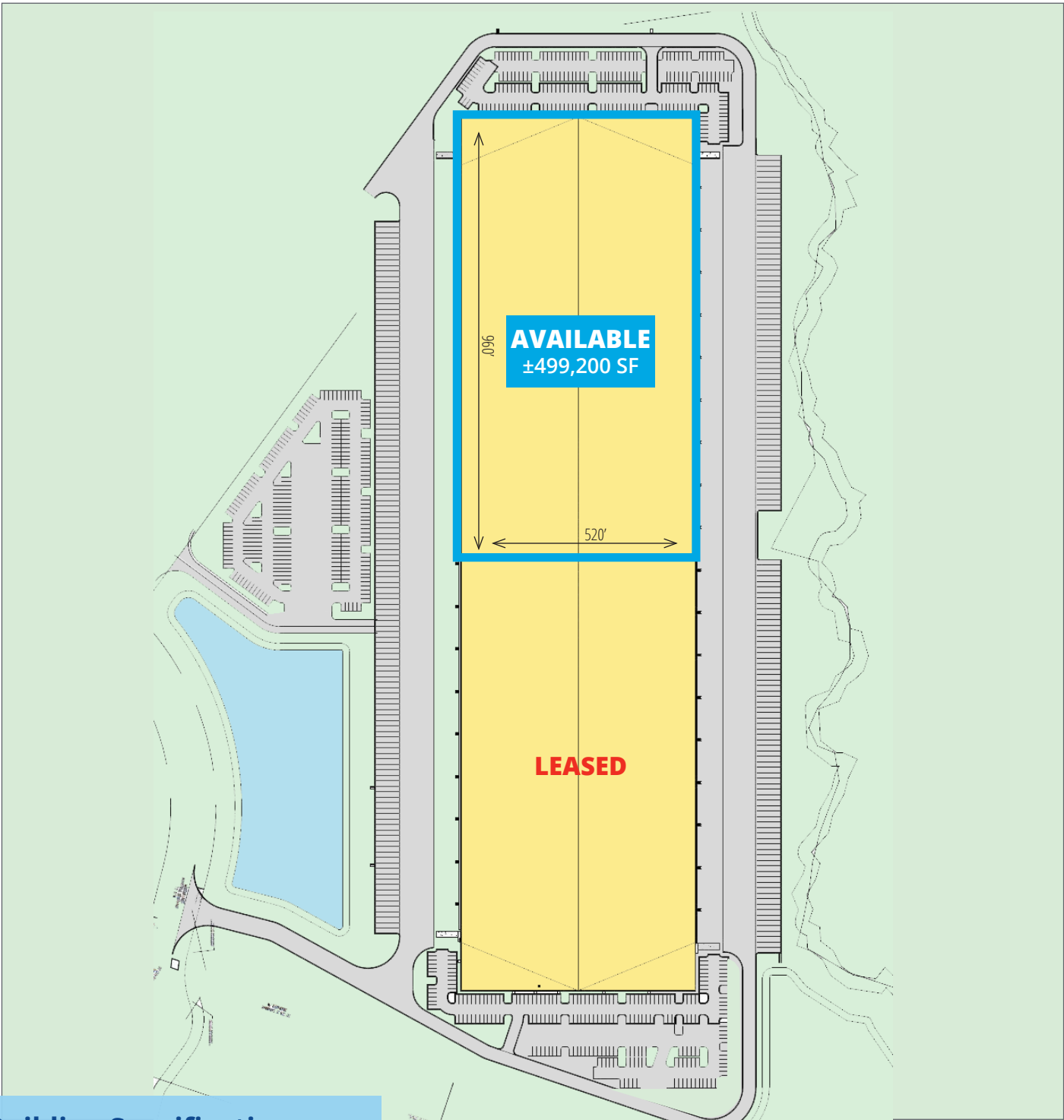
Savannah, GA 31401

Main: +1 912 233 7111

colliers.com/savannah

Accelerating success.

Site Plan

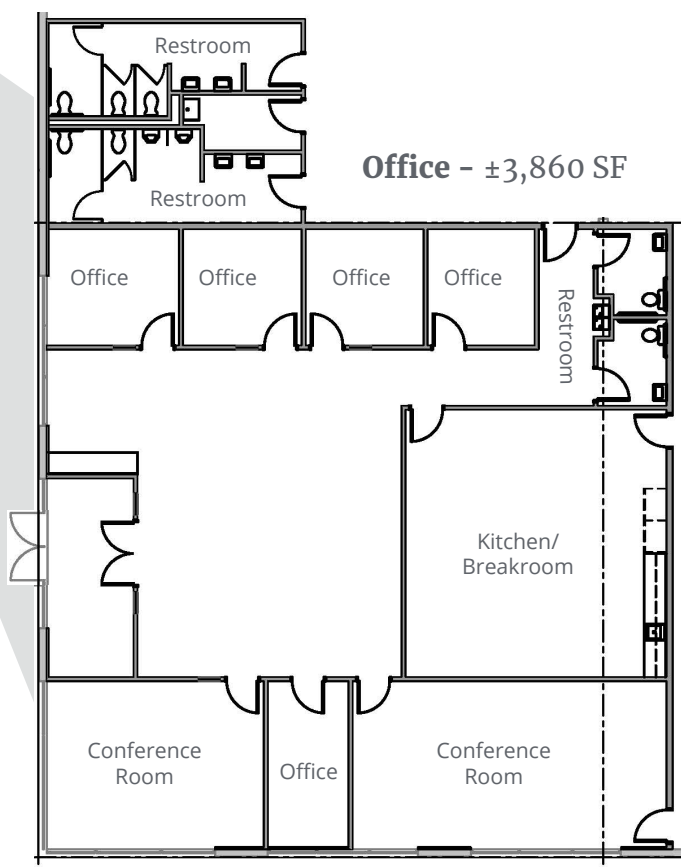
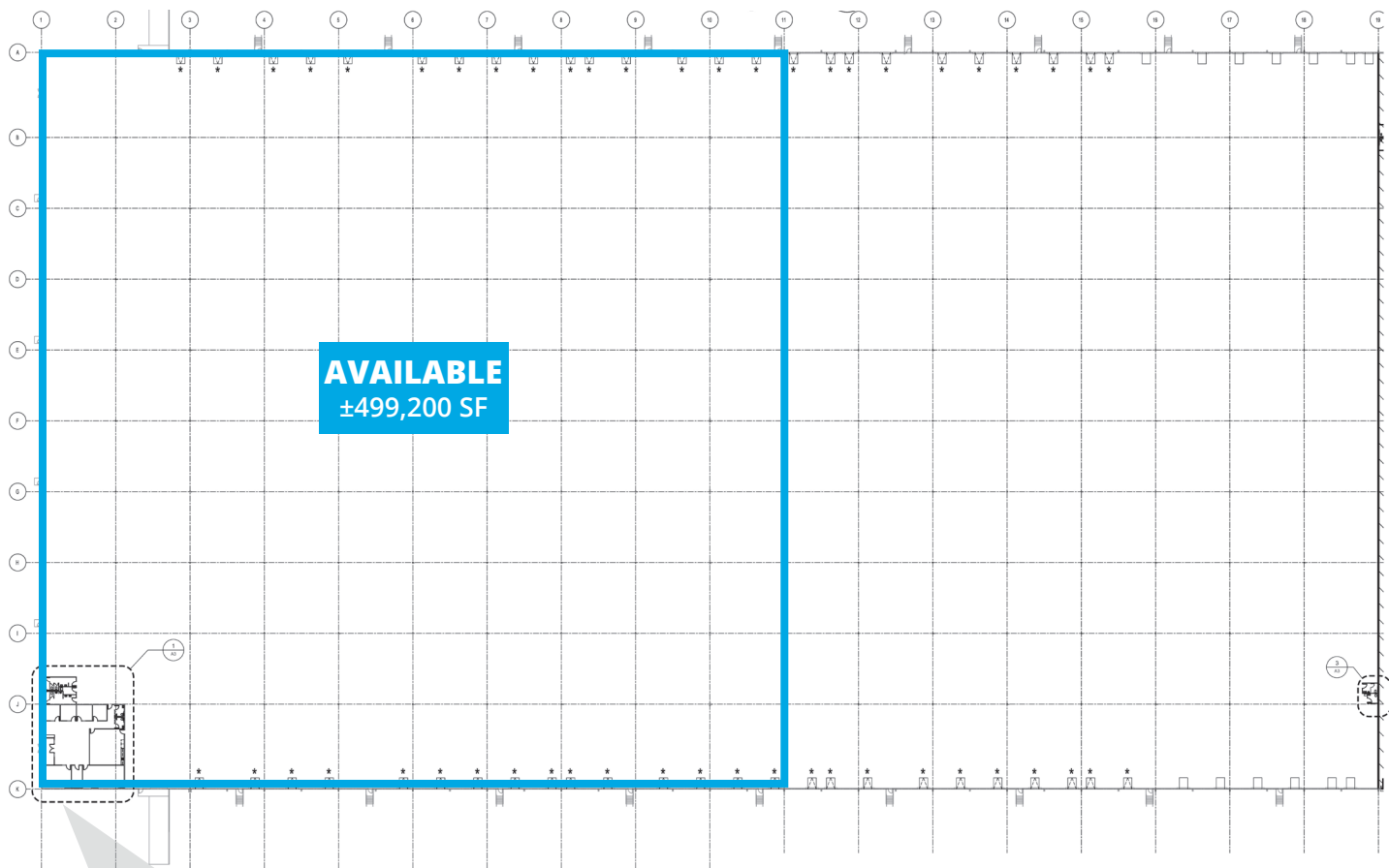


Building Specifications

499,200 sf Available	±3,860 sf Office	110 dock Doors	2 drive-in Doors	53'4" x 50' Column Spacing
125 trailer Parking	123 car Parking	520' x 960' Building Dimensions	36 foot Clear Height	Crossdock Loading

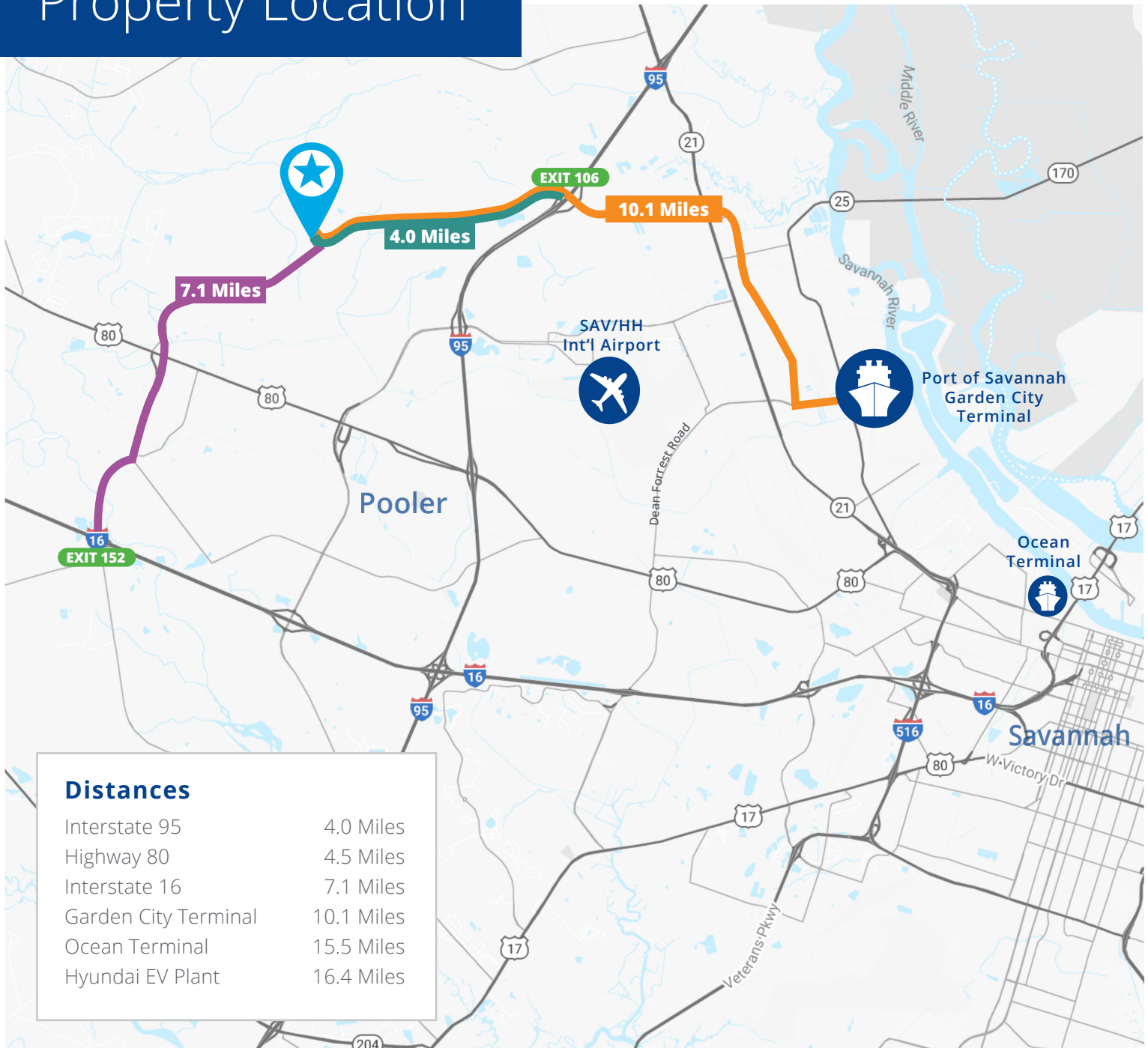
Floor Plan

Warehouse





Property Location



Contact

Hilary Shipley, SIOR

Principal

Direct +1 912 662 8013

Cell +1 912 441 3912

hilary.shipley@colliers.com

Colliers | Savannah

545 E. York Street, Savannah, GA

+1 912 233 7111

colliers.com/savannah



This document has been prepared by Colliers International for advertising and general information only. Colliers International makes no guarantees, representations or warranties of any kind, expressed or implied, regarding the information including, but not limited to, warranties of content, accuracy and reliability. Any interested party should undertake their own inquiries as to the accuracy of the information. Colliers International excludes unequivocally all inferred or implied terms, conditions and warranties arising out of this document and excludes all liability for loss and damages arising there from. This publication is the copyrighted property of Colliers International and/or its licensor(s). ©2023. All rights reserved.