



Riverview
Building

545 Mainstream Drive

The Riverview Building

FOR LEASE | 2,488 - 7,993 SF | OFFICE | METROCENTER

AVISON
YOUNG

PROPERTY OVERVIEW



PROPERTY DETAILS

Address 545 Mainstream Drive

Submarket Metrocenter

Parking 4/1000

Asking rate \$27.00/sf FSG

Availability
Suite 220: 7,993 sf Suite 407: 2,488
sf Suite 413: 2,703 sf - Available
3/1/26



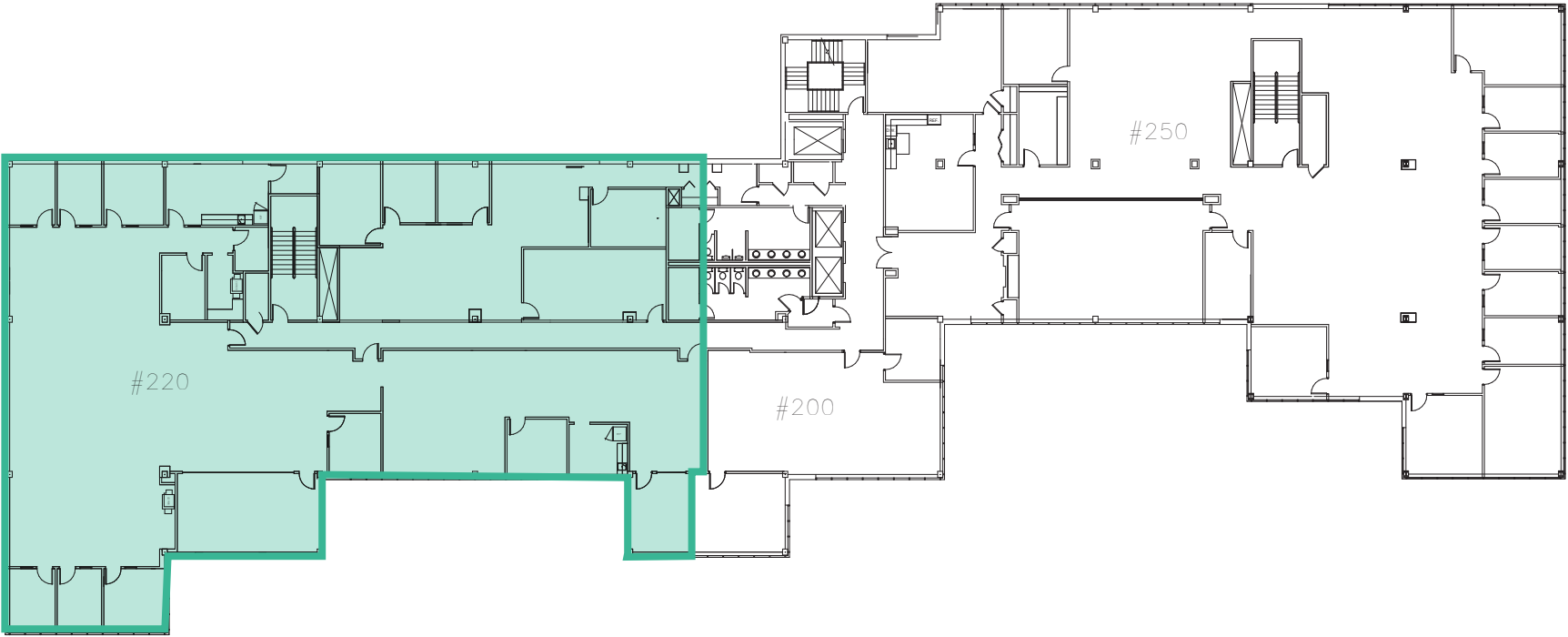
PROPERTY HIGHLIGHTS

- Just minutes from Downtown Nashville, Germantown, and Nashville International Airport
- Strong surrounding amenities including dining, retail, and service options nearby
- Direct access to the Cumberland River Greenway extending 1.5 miles into Downtown
- Abundant free surface parking available
- Onsite food service market

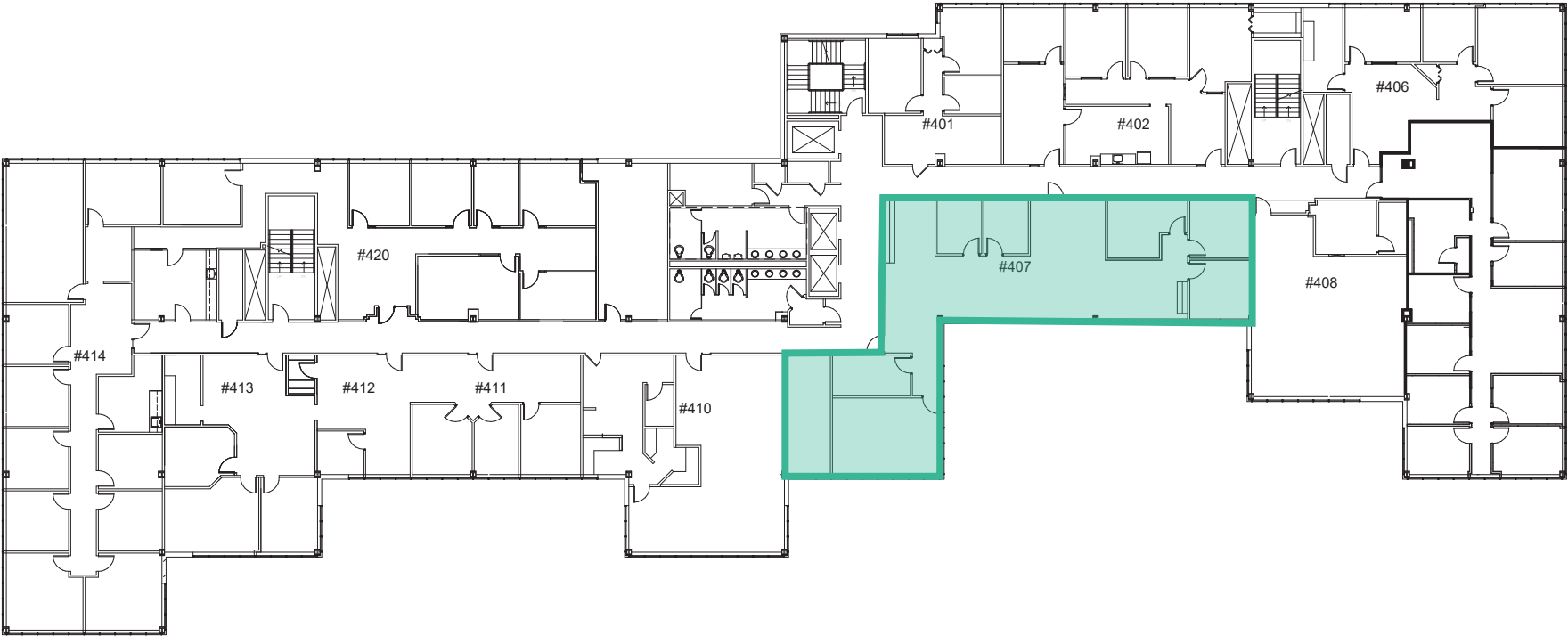
PROPERTY PHOTOS

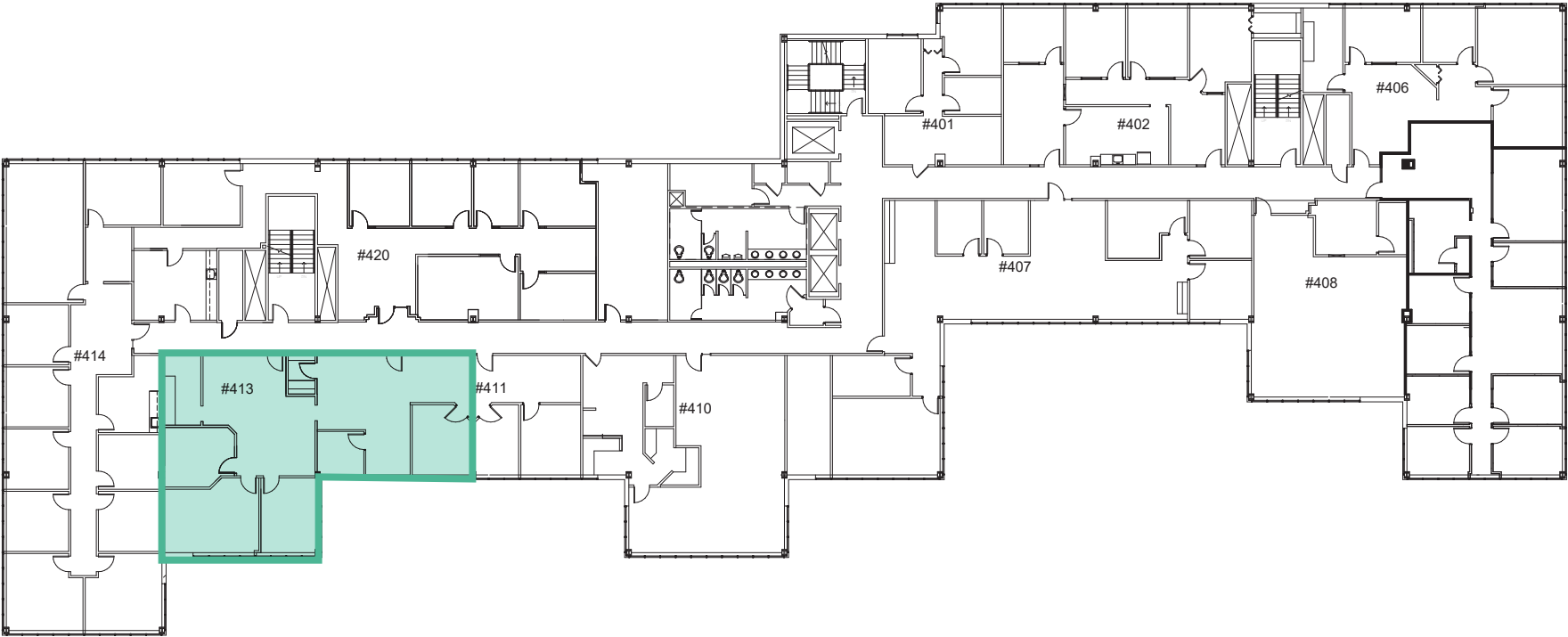


SUITE 220 | 7,993 sf



SUITE 407 | 2,488 SF







Learn more

Suzanne Ganser

Vice President

suzanne.ganser@avisonyoung.com

+1 615 939 1928

**Riverview
Building**

545 Mainstream Drive

© 2026 Avison Young – Tennessee, LLC. All rights reserved.

E. & O.E.: The information contained herein was obtained from sources which we deem reliable and, while thought to be correct, is not guaranteed by Avison Young.

700 12th Avenue South | Suite 200 | Nashville, TN 37203