

**2,500 SF
FOR LEASE**



EXECUTIVE OFFICES FOR LEASE IN STREETSBORO

8261 Diagonal Rd, Streetsboro, OH 44241

CONTACT:

Chris Hondlik

ChrisHondlik@HannaCRE.com

216.861.5686

OFFICES FOR LEASE

8261 Diagonal Rd, Streetsboro, OH 44241

PROPERTY OVERVIEW

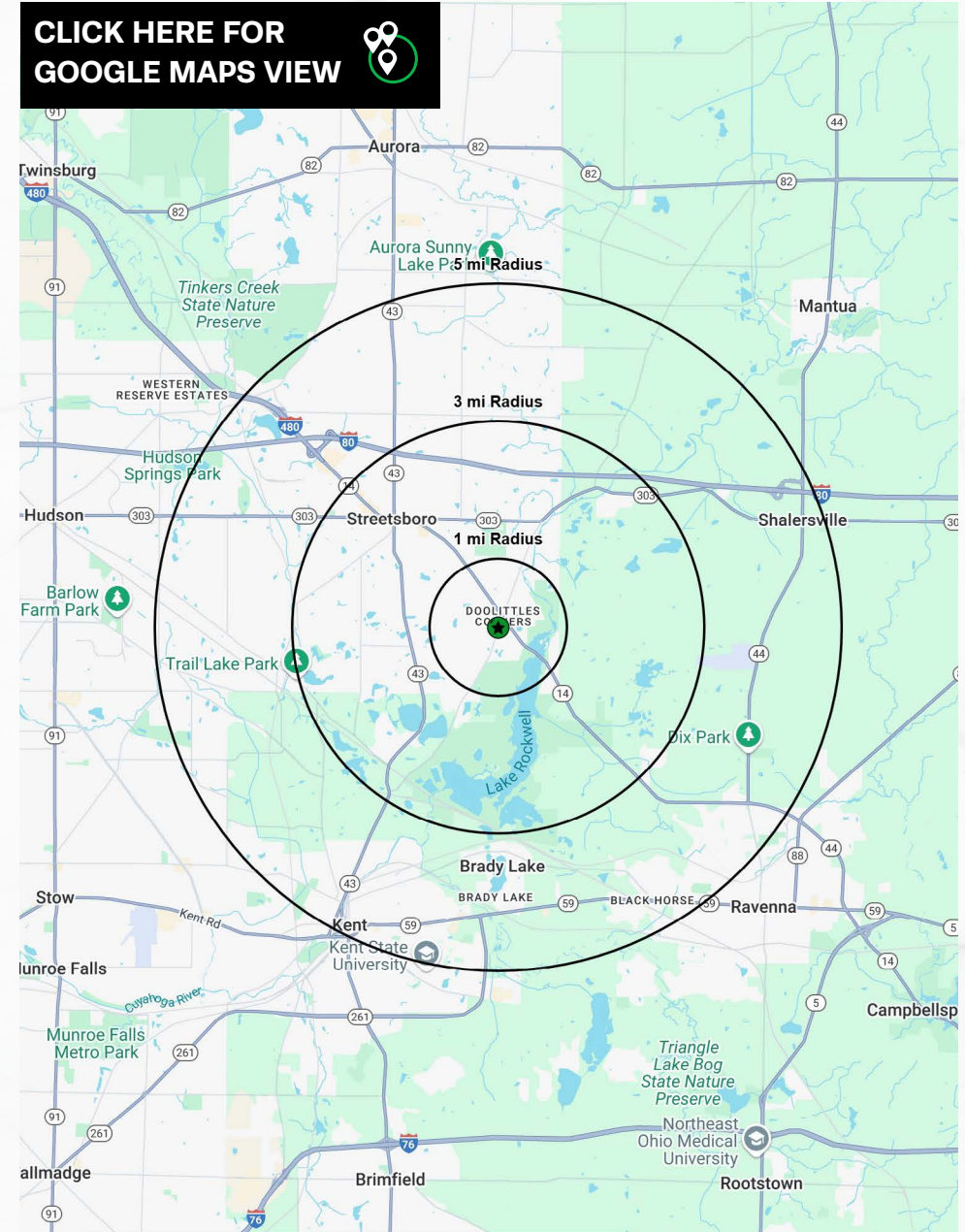
PROPERTY SUMMARY

- 2,500 SF executive offices
- 5 private offices
- 10 person conference room
- Reception area
- Kitchen
- Abundant parking
- Scenic views around property
- Close proximity to I-480 and I-80

DEMOGRAPHICS

	1-MILE	3-MILE	5-MILE
POPULATION	1,273	12,740	53,720
HOUSEHOLDS	540	5,404	21,375
AVERAGE HH INCOME	\$122,863	\$116,508	\$104,117
MEDIAN HH INCOME	\$108,809	\$90,598	\$79,117
DAYTIME POPULATION	400	6,464	41,160

CLICK HERE FOR
GOOGLE MAPS VIEW



OFFICES FOR LEASE

8261 Diagonal Rd, Streetsboro, OH 44241

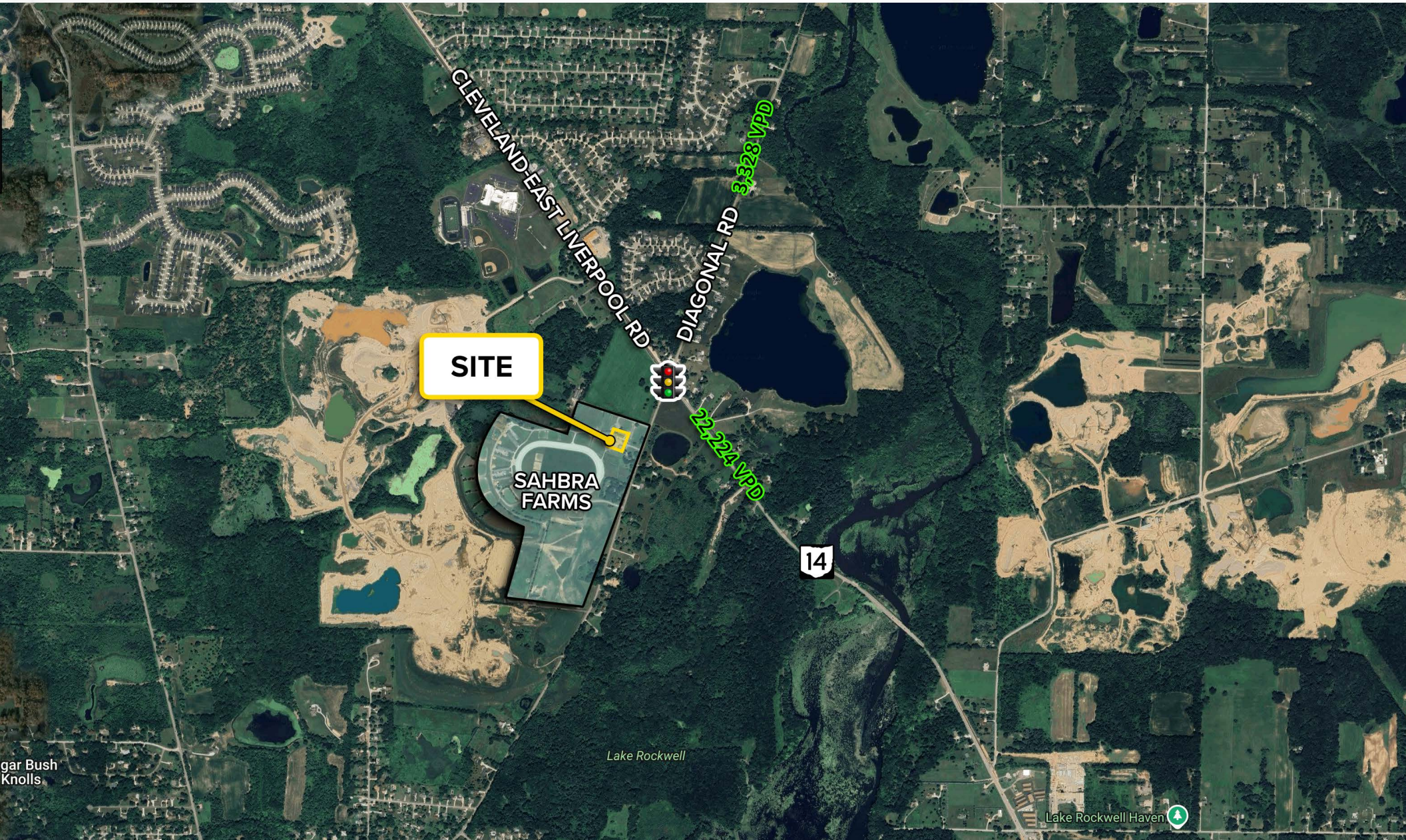
PICTURES



OFFICES FOR LEASE

8261 Diagonal Rd, Streetsboro, OH 44241

MICRO AERIAL



OFFICES FOR LEASE

8261 Diagonal Rd, Streetsboro, OH 44241

MACRO AERIAL

