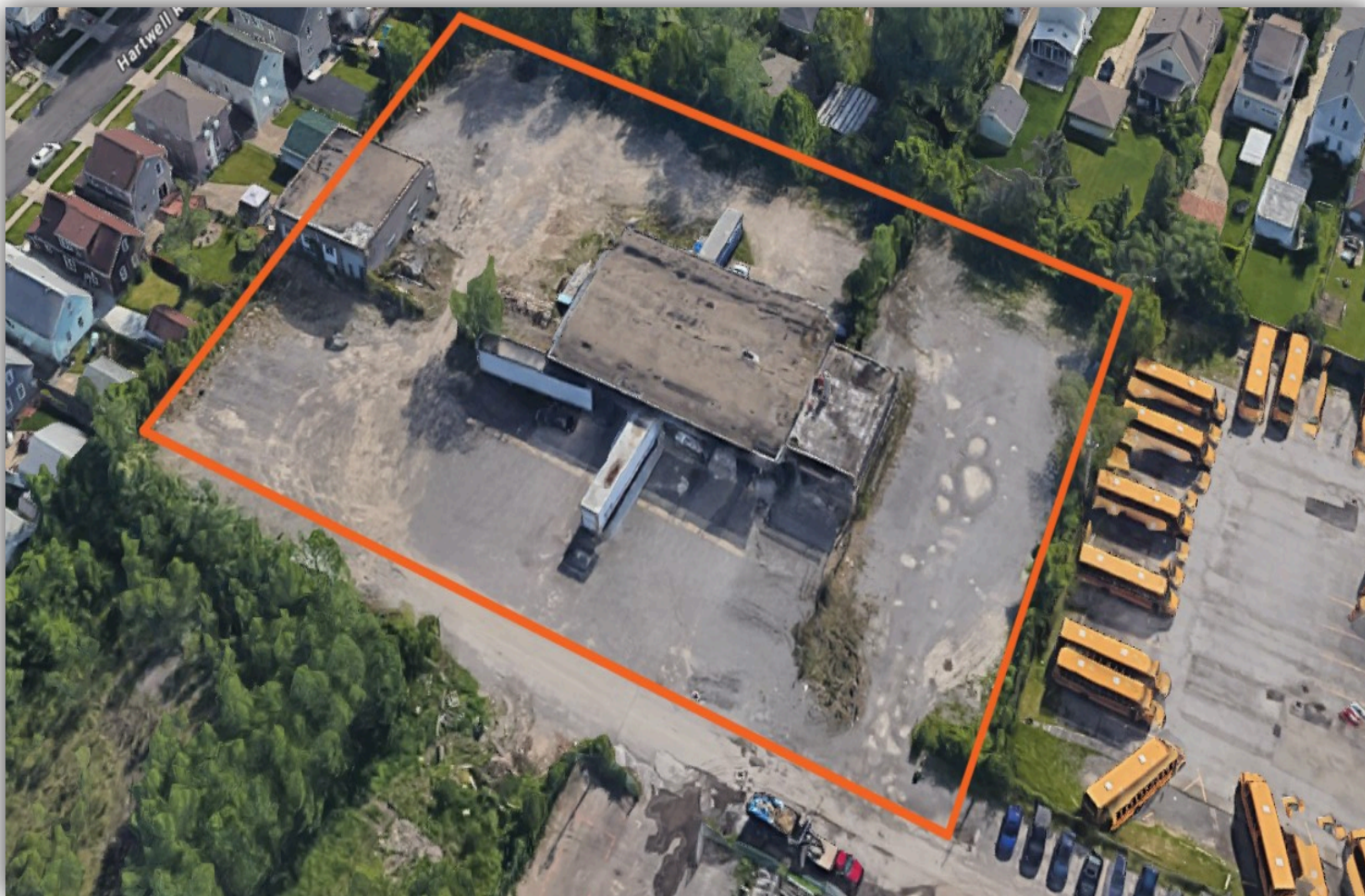


# INDUSTRIAL SPACE FOR LEASE

151 Botsford Pl, Buffalo, NY 14216



## PROPERTY DETAILS

|                 |            |
|-----------------|------------|
| Building SF:    | 9,050      |
| Lot Size:       | 1.15       |
| Graded Levels:  | 3          |
| Dock Doors:     | 24         |
| Ceiling Height: | 18'        |
| Zoning:         | Industrial |
| Year Built:     | 1925       |

## PROPERTY SUMMARY

Located at 151 Botsford Place in Buffalo, NY, this 1.15-acre industrial property offers a 9,050 SF building with 18-foot ceiling height, 24 loading docks, and 3 doors (12' high). Built in 1925 with steel construction, the site is zoned for industrial use, making it ideal for warehousing, manufacturing, or truck terminals.



**Visit  
Our  
Website**

**Louise Haddad**  
315-400-7477  
[louise@ironhornenterprises.com](mailto:louise@ironhornenterprises.com)





# INDUSTRIAL SPACE FOR LEASE

151 Botsford Pl, Buffalo, NY 14216

