

For Lease

Medical Office on Mill St. and Kirman Ave.



890 Mill St.
Reno, NV 89502

Michael Keating, SIOR
Partner
775.386.9727
mkeating@logicCRE.com
S.0174942

Michael Dorn
Senior Associate
775.453.4436
mdorn@logicCRE.com
S.0189635

Listing Snapshot



\$1.60 PSF
Lease Rate



± 725 - 2,736 SF
Available Square Footage



Full Service*
Lease Type

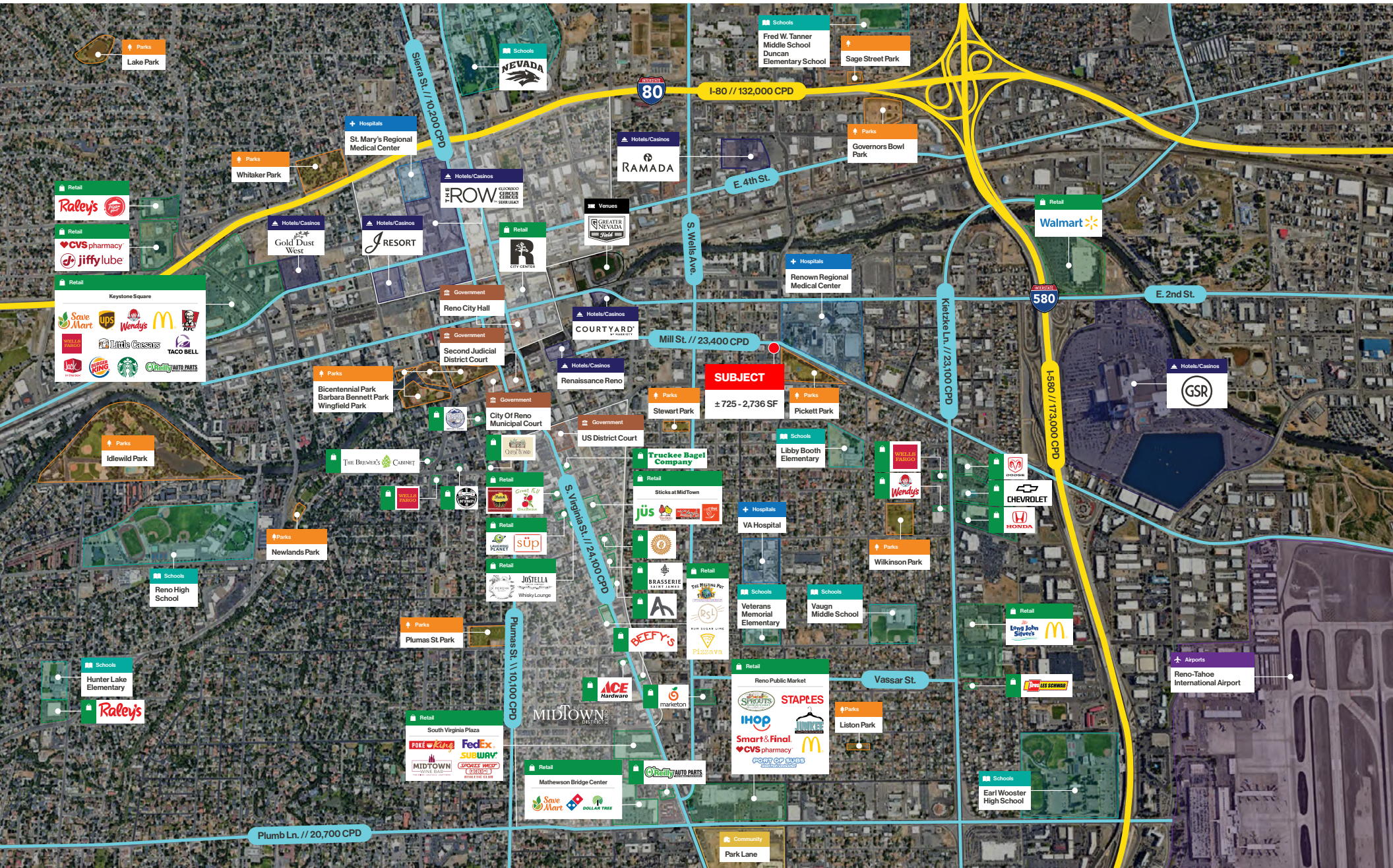
Property Highlights

- Multi-tenant medical office next to Renown Campus
- Easily accessible bus stop in front of building
- Multiple configurations available
- Community parking
- Located by the downtown medical hub
- Contact broker about upcoming vacancies
- Situated off of Mill St. with ± 23,400 CPD
- **Full Service Lease – excludes costs for communications and janitorial*
- Easy access from both I-80 and I-580 highways

Demographics

	1-mile	3-mile	5-mile
2025 Population	18,517	141,137	256,523
2025 Average Household Income	\$73,099	\$83,402	\$99,475
2025 Total Households	9,154	57,886	102,727





Floor Plan

First Floor | Suite 100



\$1.60 PSF

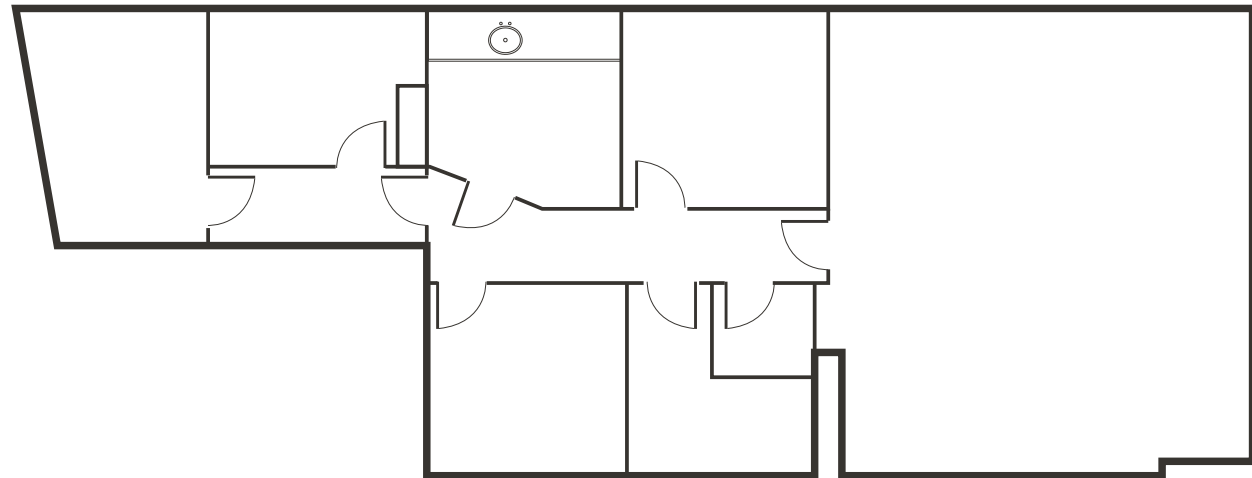
Full Service Lease Rate



± 1,268 SF

Available Square Footage

- First floor space
- Four (4) private offices
- Private restroom
- Kitchen
- One (1) sink



**Can be combined w/ suite 102 for ± 2,376 SF*

[Click for a Virtual Tour](#) 

Floor Plan

First Floor | Suite 101



\$1.60 PSF

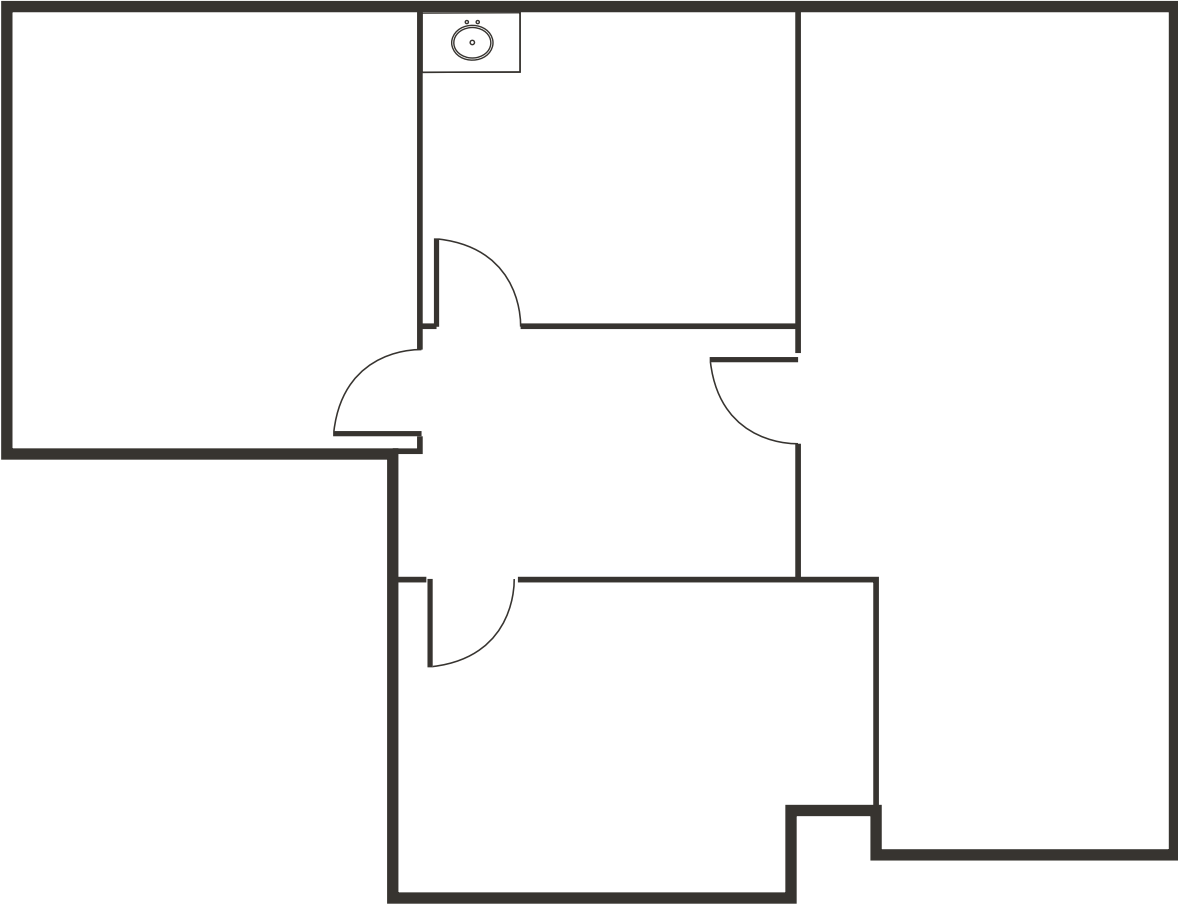
Full Service Lease Rate



± 726 SF

Available Square Footage

- Three (3) private offices
- Built-in reception desk
- One (1) sink



Floor Plan

Third Floor | Suite 300



\$1.60 PSF

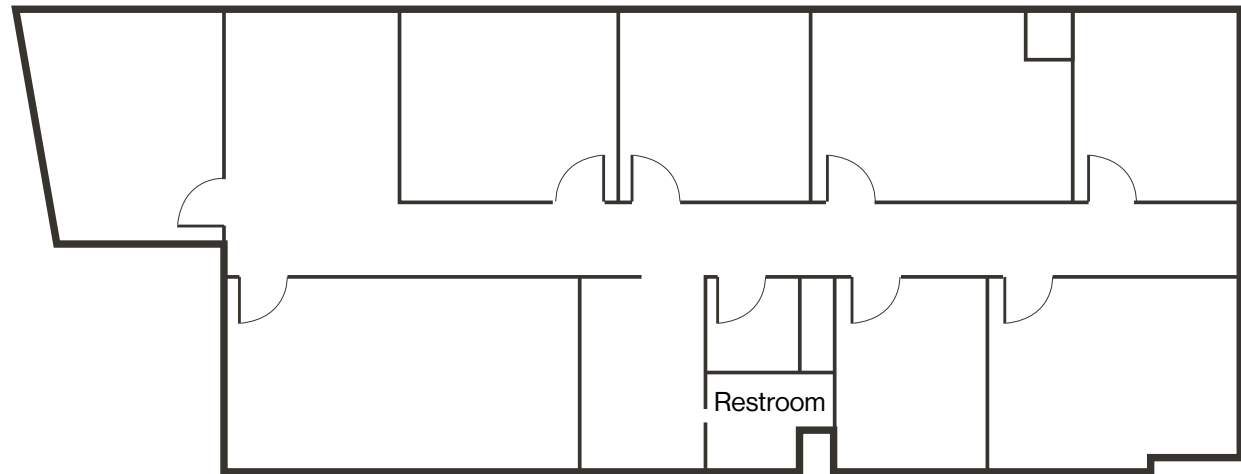
Full Service Lease Rate



± 1,368 SF

Available Square Footage

- Third floor space
- Seven (7) private offices
- Waiting room
- Private restroom



**Can be combined w/ suite 302 for ± 2,736 SF*

[Click for a Virtual Tour](#) 

Floor Plan

Third Floor | Suite 302



\$1.60 PSF

Full Service Lease Rate

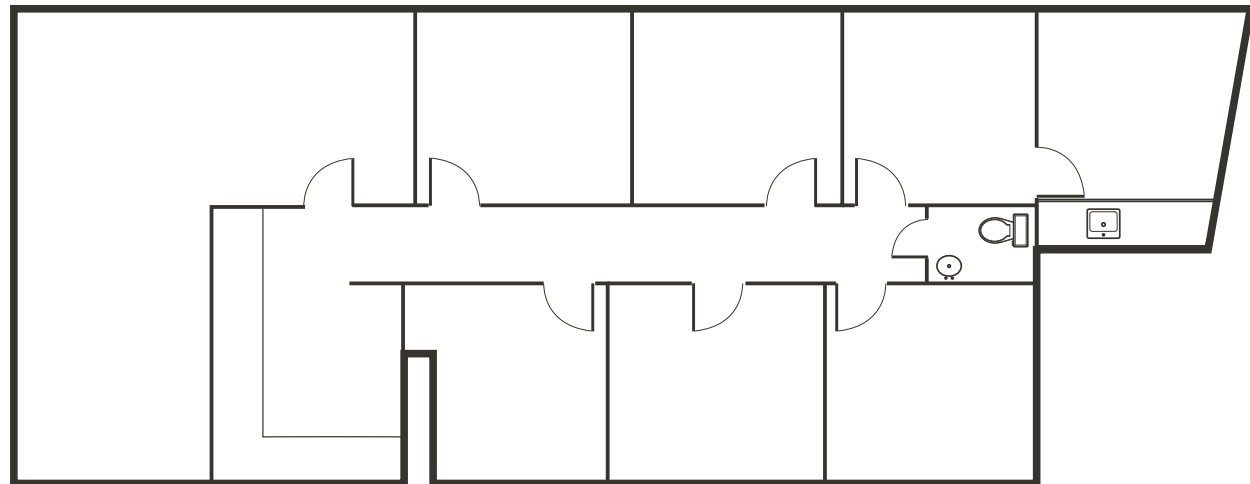


± 1,244 SF

Available Square Footage

- Built in reception & open waiting room
- One (1) office
- Three (3) exam rooms
- Two (2) private restrooms
- Break room

**Can be combined w/ suite 300 for ± 2,736 SF*



[Click for a Virtual Tour](#) 

Property Photos



LOGIC Commercial Real Estate

Specializing in Brokerage and Receivership Services



Join our email list and
connect with us on LinkedIn

The information herein was obtained from sources deemed reliable; however LOGIC Commercial Real Estate makes no guarantees, warranties or representation as to the completeness or accuracy thereof.

For inquiries please reach out to our team.

Michael Keating, SIOR

Partner
775.386.9727
mkeating@logicCRE.com
S.0174942

Michael Dorn

Senior Associate
775.453.4436
mdorn@logicCRE.com
S.0189635